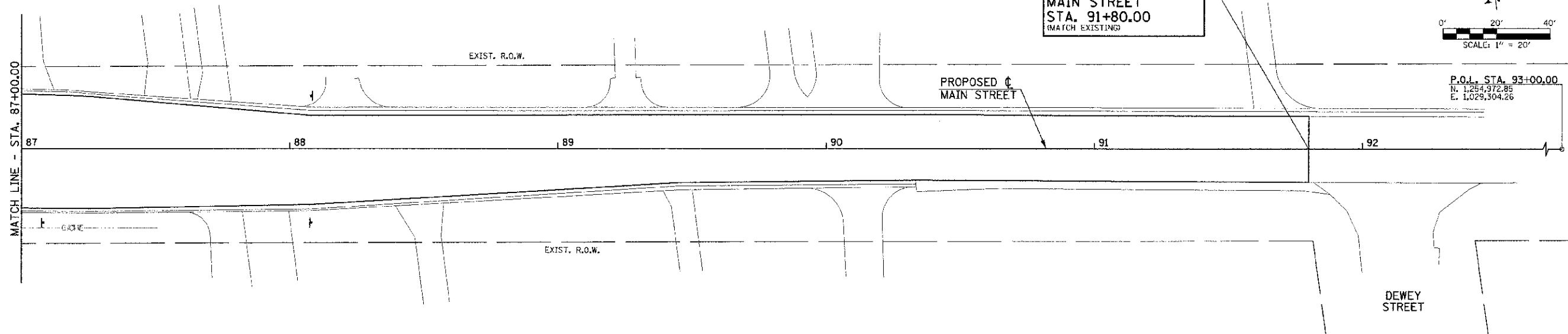
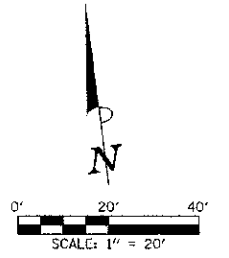


SEC. 10, T.19N., R.9E., 3rd P.M.  
CHAMPAIGN COUNTY, ILLINOIS

NOTE:  
ALL SIDEWALK P.I. AND DRIVEWAY ELEVATION INFORMATION IS GIVEN AT THE BACK OF WALK OR FACE OF CURB (S/W = SIDEWALK, T/C = TOP OF CURB). SEE INTERSECTION DETAILS FOR ADDITIONAL INFORMATION AT INTERSECTION QUADRANTS.

POLYMERIZED HOT-MIX ASPHALT SURFACE COURSE, MIX "D", N90 (2" THICK)  
STA. 87+00.00 TO STA. 91+80.00

END IMPROVEMENTS  
MAIN STREET  
STA. 91+80.00  
(MATCH EXISTING)



SEC. 15, T.19N., R.9E., 3rd P.M.  
CHAMPAIGN COUNTY, ILLINOIS

| STRUCTURE LEGEND                |  | LEGEND |  |
|---------------------------------|--|--------|--|
| TA - TYPE A (MANHOLE OR INLET)  |  |        | PORTLAND CEMENT CONCRETE BASE COURSE 10"                     |
| TB - TYPE B (INLET)             |  |        | PORTLAND CEMENT CONCRETE DRIVEWAY PAVEMENT (6" P.E.-8" C.E.) |
| R.D. - RESTRICTED DEPTH         |  |        | PORTLAND CEMENT CONCRETE SIDEWALK 6"                         |
| CL RIM - CENTER OF 2' OPENING   |  |        | DETECTABLE WARNINGS  |
| RIM - TOP OF FRAME ELEVATION    |  |        | BRICK SIDEWALK   |
| T/F.S.T. - TOP OF FLAT SLAB TOP |  |        | TEMPORARY CONSTRUCTION EASEMENT                              |
| 3 - TYPE 3 FRAME AND GRATE      |  |        |  |
| INV. - INVERT ELEVATION         |  |        |  |

**KEY NOTES**

① 1' STUB (SEE PROP. TYPICAL SECTION NOTE 7)

② SEE INTERSECTION DETAILS FOR CURB LIMITS AND ELEVATIONS

UTILITY INFORMATION IS ONLY SHOWN IN AREAS OF PROPOSED UNDERGROUND WORK.

SOME OF THE TOPOGRAPHIC INFORMATION OUTSIDE OF THE ROADWAY SHOWN ON THIS SHEET IS BASED ON AERIAL PHOTOGRAPHY AND IS APPROXIMATE.

SEE HORIZONTAL ALIGNMENT LAYOUT AND CONTROL SHEETS FOR TEMPORARY CONSTRUCTION EASEMENT AND PERMANENT EASEMENT GEOMETRY.

ALL STREET RADII ARE DIMENSIONED TO THE BACK OF CURB.

THE HEIGHT OF ALL PROPOSED MONOLITHIC SIDEWALK CURB, PCC SIDEWALK CURB, AND CONCRETE CURB TYPE B (SPECIAL) SHALL TRANSITION TO MATCH THE HEIGHT OF THE EXISTING CURB OR STEPS THAT THE CURB CONNECTS TO OR SHALL TRANSITION TO ZERO HEIGHT AT EXISTING GROUND UNLESS OTHERWISE DIRECTED BY THE ENGINEER.

|   |                   |           |   |               |                           |                                |                           |                           |                    |                 |
|---|-------------------|-----------|---|---------------|---------------------------|--------------------------------|---------------------------|---------------------------|--------------------|-----------------|
| FILE NAME =<br>p:\U0070062_Urbana - Main Street (TEP)\Plans\sheets\09-roadway.dgn | DESIGNED - J.A.J. | REVISED - | STATE OF ILLINOIS<br>DEPARTMENT OF TRANSPORTATION | ROADWAY PLANS |                           | F.A.U. RTE.<br>7124            | SECTION<br>09-00483-01-R5 | COUNTY<br>CHAMPAIGN       | TOTAL SHEETS<br>75 | SHEET NO.<br>34 |
| PLOT DATE =<br>3/6/2013 11:44:18 PM   | DRAWN - J.L.B.    | REVISED - |   | SCALE: 1"=20' | SHEET NO. 34 OF 75 SHEETS | STA. 87+00.00 TO STA. 93+00.00 | MAIN STREET               |                           | CONTRACT NO. 91480 |                 |
|   | CHECKED - S.M.W.  | REVISED - |   |               |                           | FED. ROAD DIST. NO.            |                           | ILLINOIS FED. AID PROJECT |                    |                 |
|   | DATE - 03/2013    | REVISED - |   |               |                           |                                |                           |                           |                    |                 |
|   |                   |           |   |               |                           |                                |                           |                           |                    |                 |