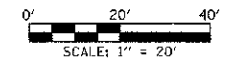
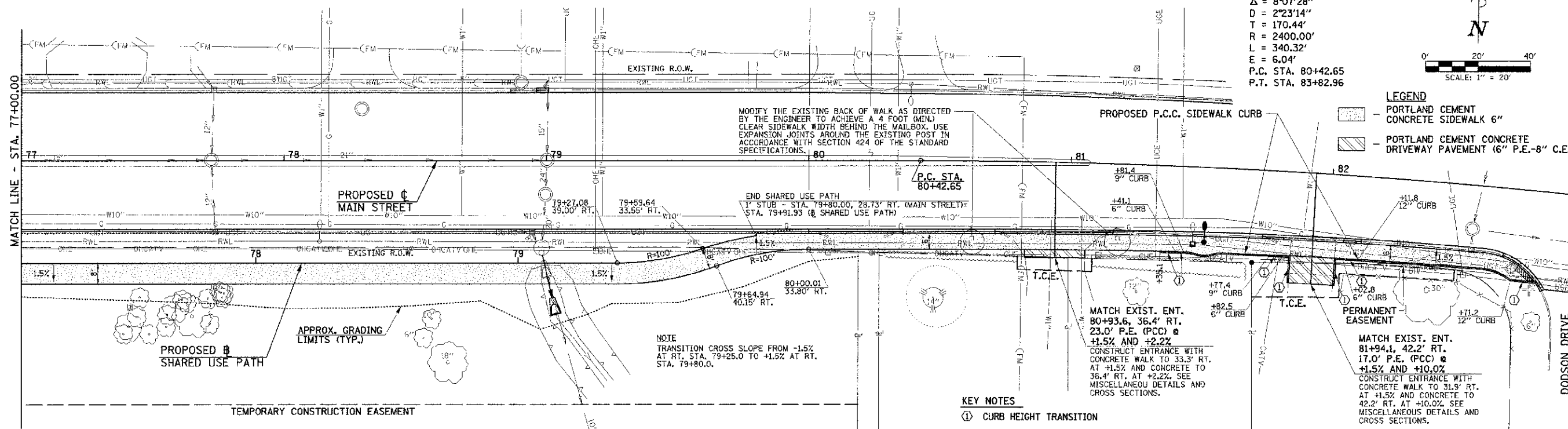


SEC. 10, T.19N., R.9E., 3rd P.M.
CHAMPAIGN COUNTY, ILLINOIS

PROPOSED ϕ
MAIN STREET
CURVE DATA
P.I. STA. 82+13.09
 $\Delta = 8^{\circ}07'28''$
 $D = 2^{\circ}23'14''$
 $T = 170.44'$
 $R = 2400.00'$
 $L = 340.32'$
 $E = 6.04'$
P.C. STA. 80+42.65
P.T. STA. 83+82.96



- LEGEND**
- PORTLAND CEMENT CONCRETE SIDEWALK 6"
 - PORTLAND CEMENT CONCRETE DRIVEWAY PAVEMENT (6" P.E.-8" C.E.)

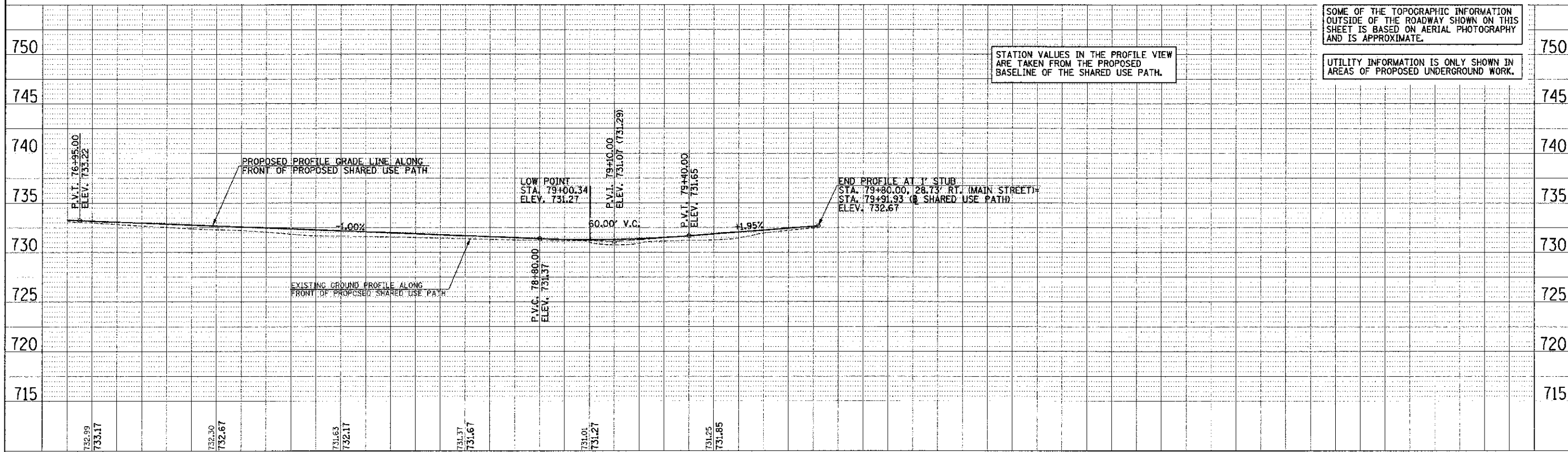


SEC. 15, T.19N., R.9E., 3rd P.M.
CHAMPAIGN COUNTY, ILLINOIS

KEY NOTES
① CURB HEIGHT TRANSITION

STATION AND OFFSET VALUES IN THE PLAN VIEW ARE TAKEN FROM THE PROPOSED CENTERLINE OF MAIN STREET.

SEE THE ROADWAY PLAN SHEETS AND SHARED USE PATH CROSS SECTION SHEETS FOR ADDITIONAL INFORMATION.



STATION VALUES IN THE PROFILE VIEW ARE TAKEN FROM THE PROPOSED BASELINE OF THE SHARED USE PATH.

SOME OF THE TOPOGRAPHIC INFORMATION OUTSIDE OF THE ROADWAY SHOWN ON THIS SHEET IS BASED ON AERIAL PHOTOGRAPHY AND IS APPROXIMATE.

UTILITY INFORMATION IS ONLY SHOWN IN AREAS OF PROPOSED UNDERGROUND WORK.

FILE NAME = p:\037\092_Urbano - Main Street ITEP\Plansheets\10-pp-walk.dgn PLOT DATE = 2/8/2013 11:44:17 PM	DESIGNED - J.A.J. DRAWN - J.L.B. CHECKED - S.M.W. DATE - 03/2013	REVISED - REVISED - REVISED - REVISED -	STATE OF ILLINOIS DEPARTMENT OF TRANSPORTATION	PLAN AND PROFILE - SHARED USE PATH SCALE: 1"=20' SHEET NO. 37 OF 75 SHEETS STA. 77+00.00 TO STA. 82+00.00	F.A.I. R.T.E. 7124 SECTION 09-00483-01-RS COUNTY CHAMPAIGN TOTAL SHEETS 75 SHEET NO. 37 MAIN STREET CONTRACT NO. 91480 ILLINOIS FED. AID PROJECT
----------------------------------------------------------------------------------------------------------------------	---------------------------------------------------------------------------	--------------------------------------------------	---------------------------------------------------	---------------------------------------------------------------------------------------------------------------------	--------------------------------------------------------------------------------------------------------------------------------------------------------