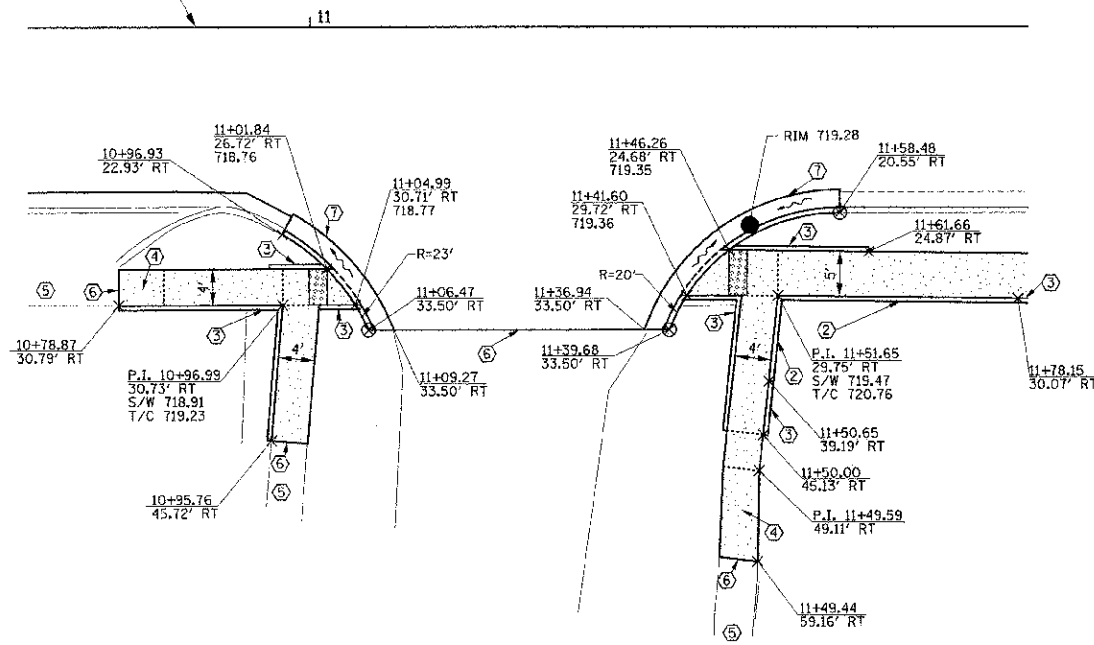
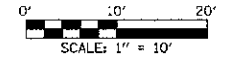
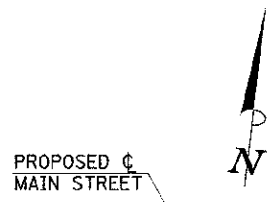


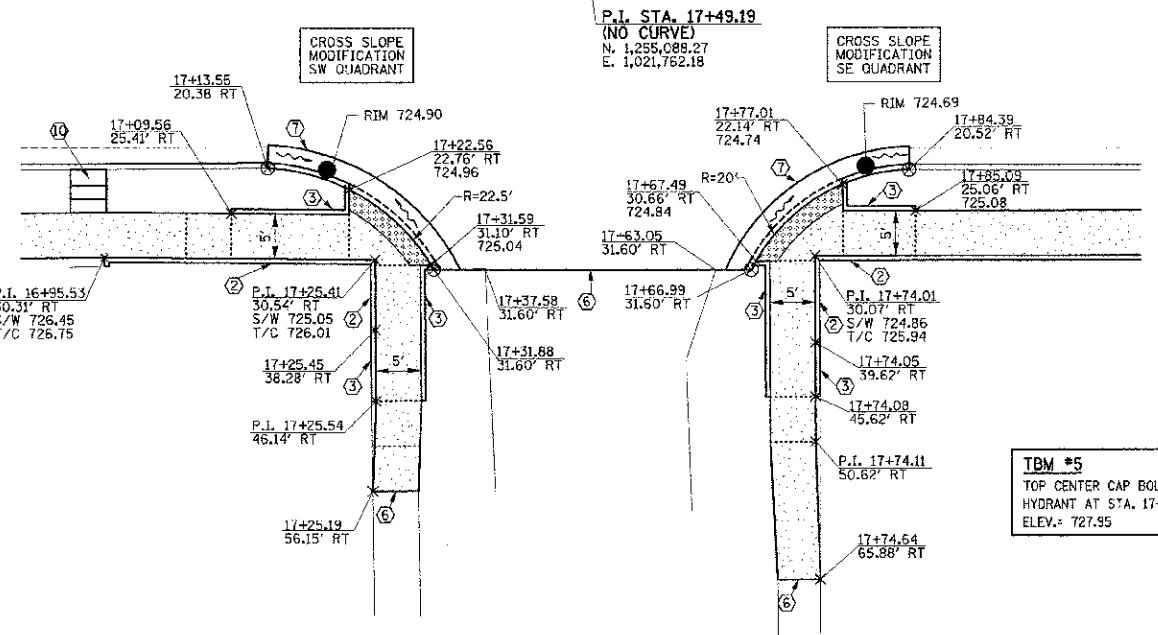
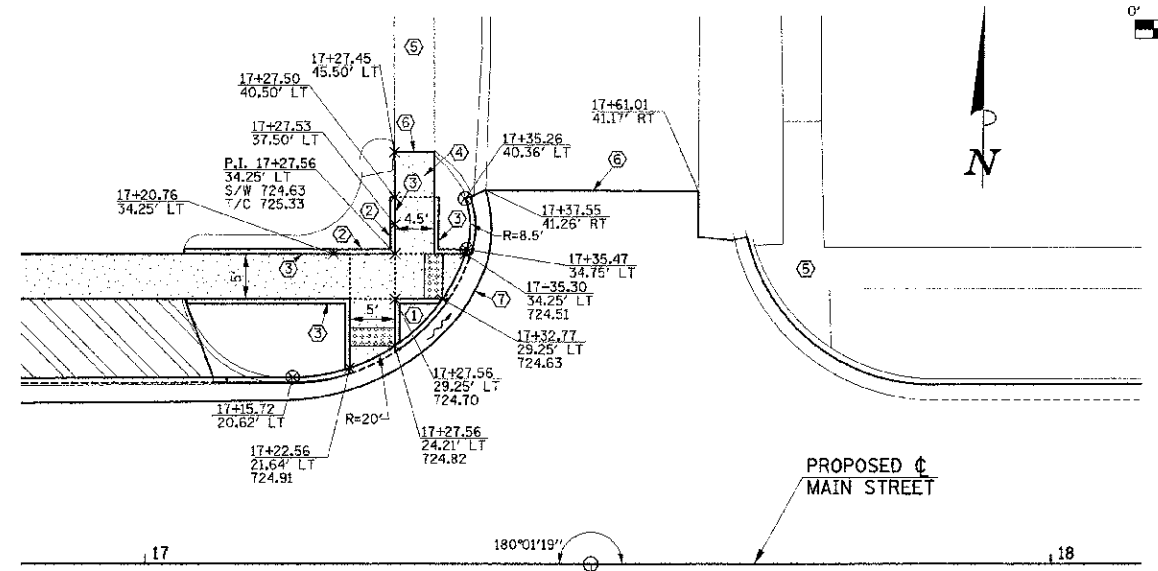
INTERSECTION DETAIL NOTES

1. THE CURB AND GUTTER SHALL NOT BE POURED MONOLITHICALLY WITH THE PCC BASE COURSE. TIE BARS BETWEEN THE PAVEMENT AND THE CURB AND GUTTER SHALL BE REQUIRED.
2. TRANSITION PROPOSED CURB HEIGHT, GUTTER WIDTH, AND GUTTER SLOPE TO MATCH EXISTING CURB AND GUTTER IN 5' OR AS DIRECTED BY THE ENGINEER.
3. THE PROPOSED HMA SURFACING SHALL NOT EXTEND INTO THE PROPOSED GUTTER FLAG.
4. THE BACK OF WALK OR BACK OF SIDEWALK CURB SHOULD MATCH THE EXISTING GROUND ELEVATIONS UNLESS OTHERWISE NOTED ON THE PLANS OR OTHERWISE DIRECTED BY THE ENGINEER.
5. THE TYPICAL CROSS-SLOPE FOR THE PROPOSED SIDEWALK SHALL BE 1.5%.
6. ELEVATIONS SHOWN WHERE THE SIDEWALK CURB RAMPS MEET THE CURB AND GUTTER ARE TAKEN AT THE TOP OF THE DEPRESSED CURB.
7. ALL STREET RADII ARE DIMENSIONED TO THE BACK OF CURB UNLESS OTHERWISE NOTED.
8. IN THE AREAS OF CROSS SLOPE MODIFICATION SHOWN ON PLANS, THE PROPOSED HMA SURFACING THICKNESS WILL EXCEED THE TYPICAL OVERLAY THICKNESS FOR THAT LOCATION. THE ADDITIONAL HMA THICKNESS REQUIRED SHALL BE ACHIEVED WITH SURFACE COURSE UNLESS OTHERWISE DIRECTED BY THE ENGINEER.



TBM #4
NORTH-EAST TOP FLANGE BOLT OF FIRE HYDRANT AT STA. 11+44.27 24.04' LT ELEV.= 722.76

**MAIN STREET/
GROVE STREET**



**MAIN STREET/
WEBBER STREET**

KEY NOTES

- ① 6" RAISED CURB ISLAND POURED MONOLITHICALLY WITH SIDEWALK
- ② P.C.C. SIDEWALK CURB
- ③ 6" WIDE CURB POURED MONOLITHICALLY WITH SIDEWALK
- ④ SIDEWALK TRANSITION AREA
- ⑤ EXISTING CONCRETE SIDEWALK OR BRICK PAVERS
- ⑥ MATCH EXISTING
- ⑦ COMBINATION CONCRETE CURB AND GUTTER, TYPE B-6.24
- ⑧ COMBINATION CONCRETE CURB AND GUTTER, TYPE B-6.18
- ⑨ COMBINATION CONCRETE CURB AND GUTTER, TYPE B-6.12
- ⑩ SEE ROADWAY PLANS

LEGEND

- 778.60 PROPOSED SPOT ELEVATION
- OR G.B. PROPOSED GRADE BREAK
- PROPOSED DIRECTION OF FLOW
- OR R.P. RADIUS POINT
- S/W SIDEWALK
- T/C TOP OF CURB
- PROPOSED CONCRETE SIDEWALK
- PROPOSED BRICK SIDEWALK
- PROPOSED DRIVEWAY
- PROPOSED DETECTABLE WARNINGS

SEE SCHEDULE OF QUANTITIES FOR TYPICAL SECTION PAVEMENT PAY ITEMS AND THEIR LOCATIONS.

PROPOSED PCC BASE COURSE LIMITS ARE NOT SHOWN FOR CLARITY. FOR PAVEMENT REMOVAL AND PCC BASE COURSE LIMITS, SEE THE REMOVAL PLANS AND ROADWAY PLANS.

SEE PROPOSED TYPICAL SECTIONS, HORIZONTAL ALIGNMENT LAYOUT AND CONTROL PLANS, REMOVAL PLANS, ROADWAY PLANS, AND MISCELLANEOUS DETAILS FOR ADDITIONAL INFORMATION.

FILE NAME = p:\0907002_Urbans - Main Street (TEP)\Plans\sheet13-in-detail.dgn	DESIGNED - K.L.R.	REVISED -	STATE OF ILLINOIS DEPARTMENT OF TRANSPORTATION	INTERSECTION DETAILS			F.A.U. RITE	SECTION	COUNTY	TOTAL SHEETS	SHEET NO.	
PLOT DATE = 3/8/2013 11:44:19 PM	DRAWN - K.L.R.	REVISED -		SCALE: 1"=10'	SHEET NO. 43 OF 75 SHEETS	STA.	TO STA.	7124	09-00483-01-RS	CHAMPAIGN	75	43
	CHECKED - S.M.W.	REVISED -						MAIN STREET		CONTRACT NO. 91480		
	DATE - 03/2013	REVISED -						FED. ROAD DIST. NO. ILLINOIS FED. AID PROJECT				