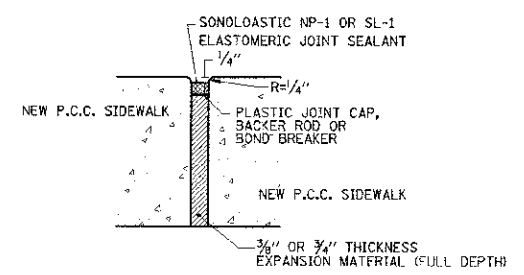
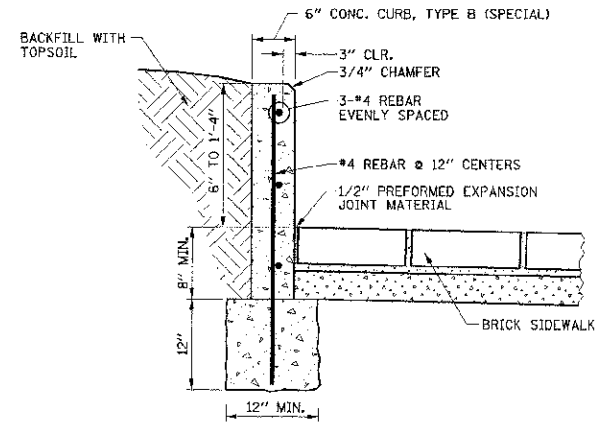


LONGITUDINAL EXPANSION/ISOLATION JOINT DETAIL

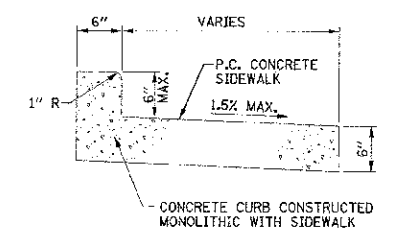


TRANSVERSE EXPANSION JOINT DETAIL



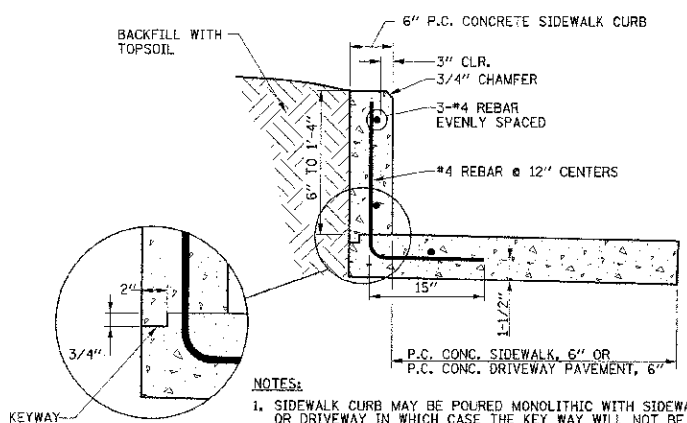
NOTE:
THE COST OF CONSTRUCTING THE ADDITIONAL CURB WIDTH BELOW GRADE AND FURNISHING AND INSTALLING THE #4 REBARS AND PREFORMED EXPANSION JOINT MATERIAL SHALL BE INCLUDED IN THE COST OF THE CONCRETE CURB, TYPE B (SPECIAL), AND NO ADDITIONAL COMPENSATION WILL BE ALLOWED. THE BRICK SIDEWALK WILL BE PAID FOR SEPARATELY.

CONCRETE CURB, TYPE B (SPECIAL) DETAIL



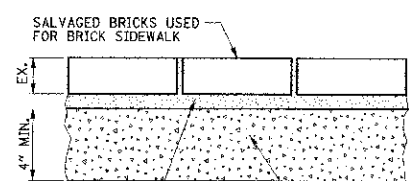
NOTE:
THIS WORK WILL BE PAID FOR AS PORTLAND CEMENT CONCRETE SIDEWALK 6\"/>

SIDEWALK MONOLITHIC CURB DETAIL



NOTES:
1. SIDEWALK CURB MAY BE POURED MONOLITHIC WITH SIDEWALK OR DRIVEWAY IN WHICH CASE THE KEY WAY WILL NOT BE REQUIRED.
2. THE COST OF CONSTRUCTING THE ADDITIONAL SIDEWALK OR DRIVEWAY WIDTH BELOW THE SIDEWALK CURB AND FURNISHING AND INSTALLING #4 REBARS SHALL BE INCLUDED IN THE COST OF THE PORTLAND CEMENT CONCRETE SIDEWALK CURB, AND NO ADDITIONAL COMPENSATION WILL BE ALLOWED. THE P.C. CONC. SIDEWALK AND P.C. CONC. DRIVEWAY PAVEMENT ADJACENT TO THE SIDEWALK CURB WILL BE PAID FOR SEPARATELY.

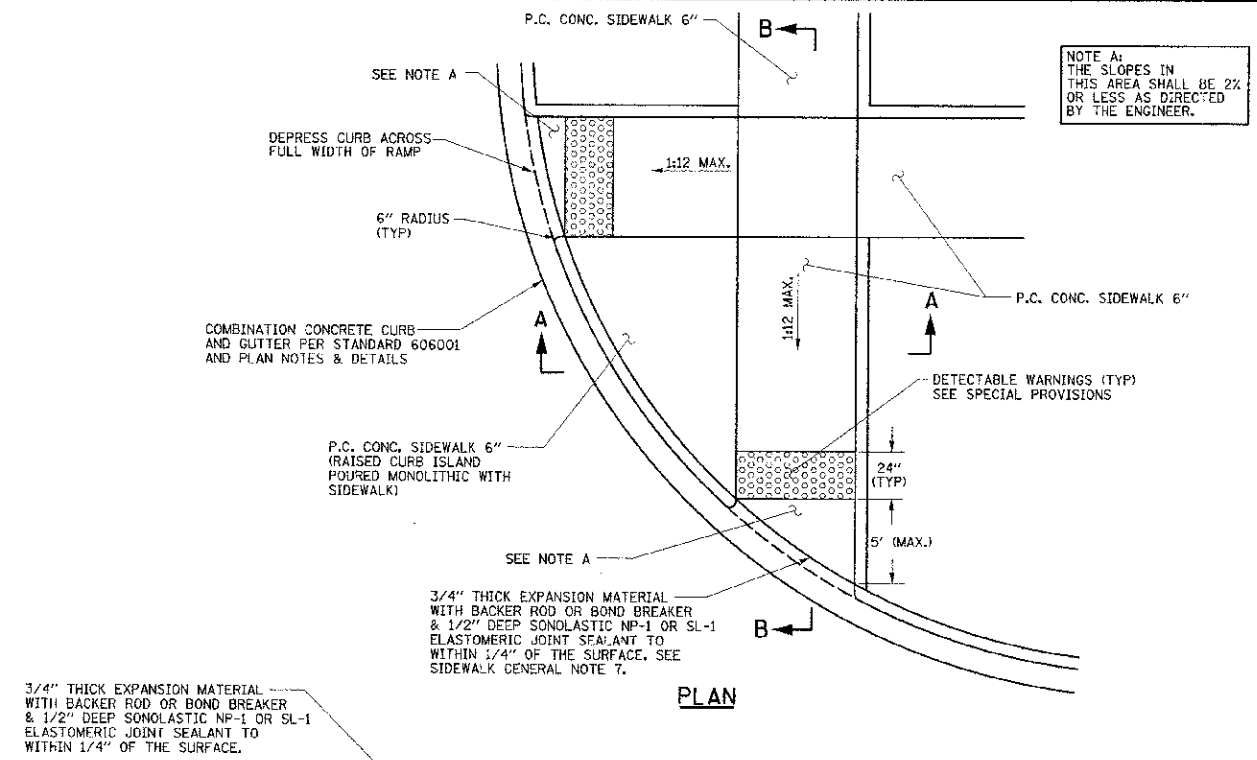
PORTLAND CEMENT CONCRETE SIDEWALK CURB DETAIL



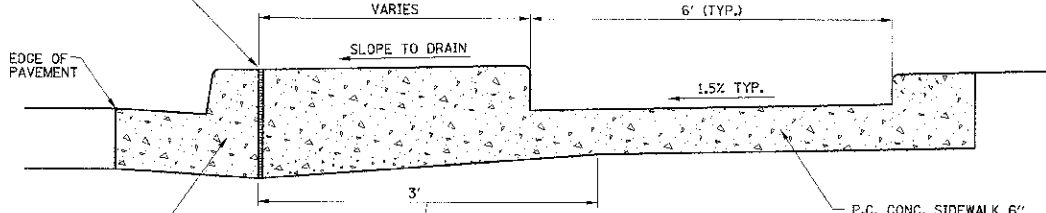
1\"/>

NOTE:
THE COST OF INSTALLING THE SALVAGED BRICK PAVERS ON THE SAND BEDDING COURSE SHALL BE INCLUDED IN THE COST OF THE BRICK SIDEWALK. THE AGGREGATE BASE COURSE WILL BE PAID FOR SEPARATELY.

BRICK SIDEWALK DETAIL

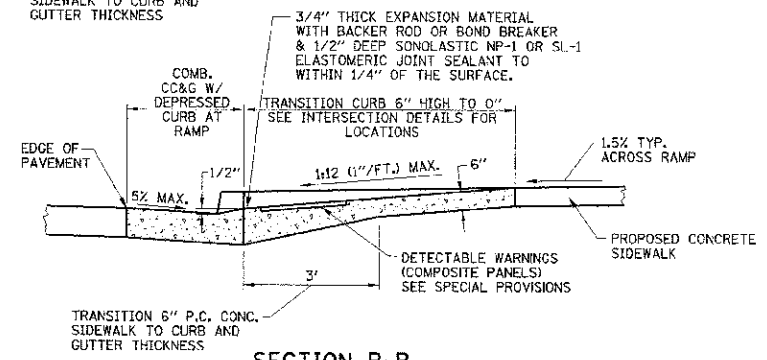


NOTE A:
THE SLOPES IN THIS AREA SHALL BE 2% OR LESS AS DIRECTED BY THE ENGINEER.



COMBINATION CONCRETE CURB AND GUTTER PER STANDARD 606001 AND PLAN NOTES & DETAILS

SECTION A-A



SECTION B-B

SIDEWALK CURB RAMP DETAIL

NOTES:
1. THE COST OF CONSTRUCTING THE DEPRESSED CURB AS SHOWN SHALL BE INCLUDED IN THE COST OF CONSTRUCTING THE COMBINATION CONCRETE CURB AND GUTTER OF THE TYPE SPECIFIED, AND NO ADDITIONAL COMPENSATION WILL BE ALLOWED.
2. THE COST OF FURNISHING AND INSTALLING THE 3/4\"/>

FILE NAME = p:\0070062_Urbans - Main Street ITP\Plans\Sheets\15-misc-details.dgn
PLOT DATE = 3/7/2013 7:11:53 PM

DESIGNED - K.L.R. REVISIONS -
DRAWN - A.E.A. REVISIONS -
CHECKED - S.M.W. REVISIONS -
DATE - 03/2013 REVISIONS -

STATE OF ILLINOIS
DEPARTMENT OF TRANSPORTATION

MISCELLANEOUS DETAILS

SCALE: NONE SHEET NO. 62 OF 75 SHEETS STA. TO STA.

F.A.J. RTE.	SECTION	COUNTY	TOTAL SHEETS	SHEET NO.
7124	09-00483-01-RS	CHAMPAIGN	75	62
MAIN STREET			CONTRACT NO. 91480	
FED. ROAD DIST. NO.		ILLINOIS	FED. AID PROJECT	