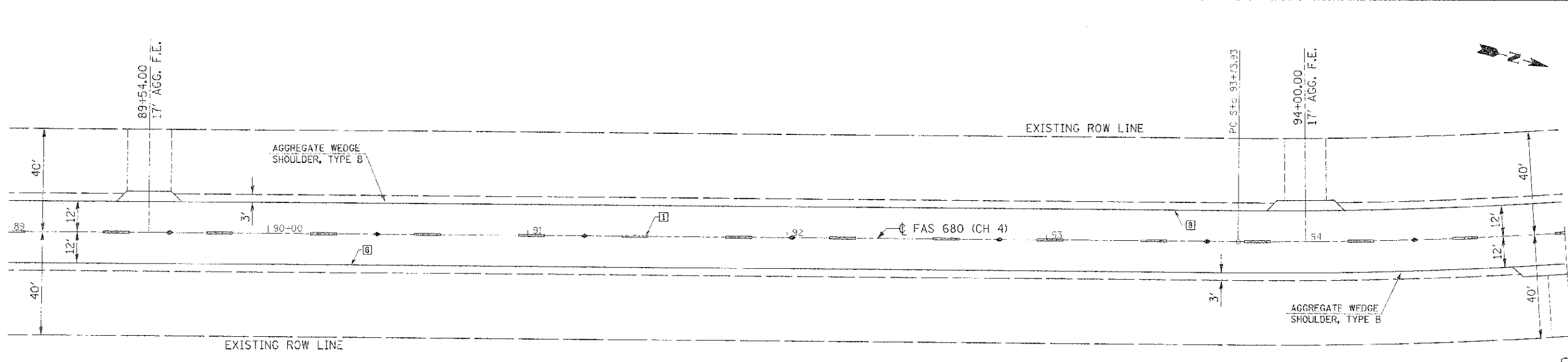
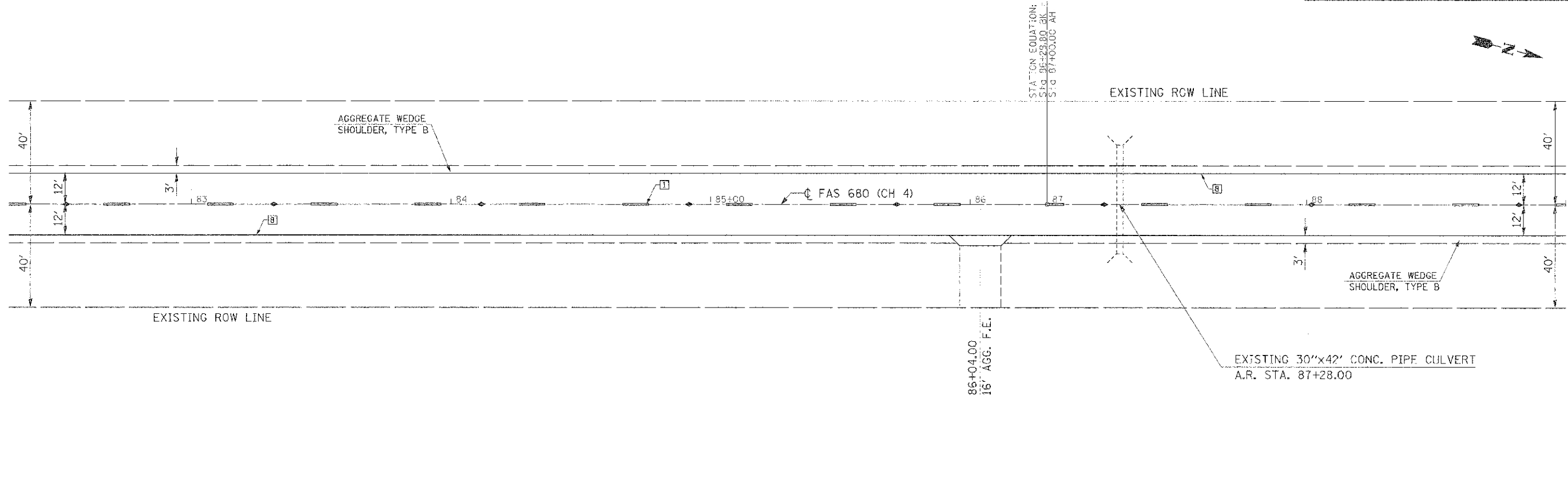


ROUTE	SECTION	COUNTY	TOTAL SHEETS	SHEET NO.
FAS 680 (CH 4)	12-00111-20-25	EDGAR	27	14
EDGAR COUNTY, ILLINOIS		CONTRACT NO. 91485		
		FED. AID PROJECT		



TYPICAL PAVEMENT MARKING LEGEND

- [1] 4" (100) SKIP-DASH (YELLOW)
- [2] 4" (100) SOLID (YELLOW)
- [3] 12" (300) DIAGONAL (YELLOW)
- [4] 4" (100) DOUBLE YELLOW (NARROW)
- [8] 4" (100) SOLID (WHITE)

TYPICAL PAVEMENT MARKERS LEGEND

- ◆ TWO-WAY AMBER MARKER
- ▶ ONE-WAY AMBER MARKER
- ▷ ONE-WAY CRYSTAL MARKER

EXIST. CURVE LOWERT-6
 PI STA. = 96+77.48
 $\Delta = 15^\circ 50' 02''$ (LT)
 $D = 3^\circ 18' 00''$
 $R = 1,736.24'$
 $T = 303.55'$
 $L = 601.03'$
 $E = 26.34'$
 P.C. STA. = 93+73.93
 P.T. STA. = 99+74.96

PLAN	 EDGAR COUNTY HIGHWAY DEPARTMENT
<small>DATE:</small> <small>SCALE: 1" = 20'</small>	

SHEET 14