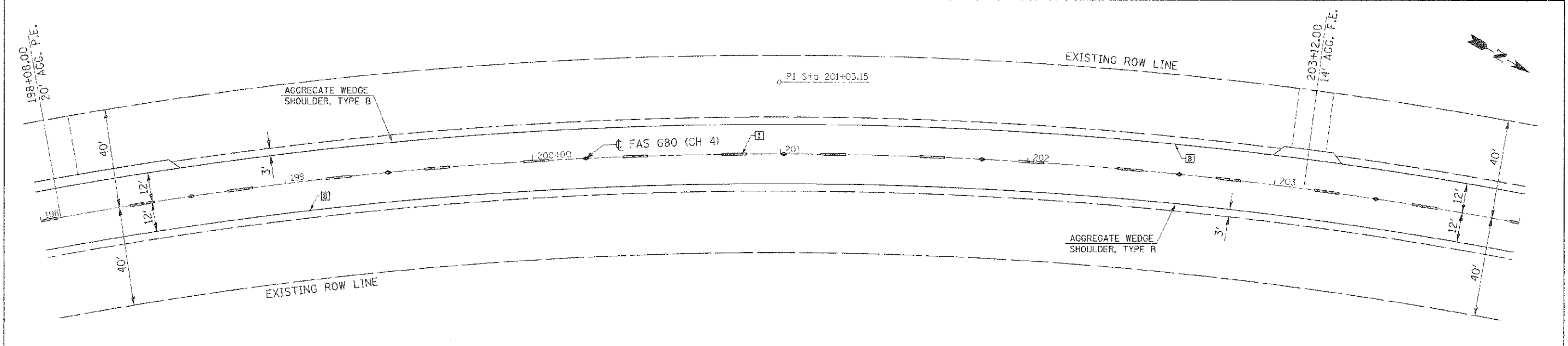
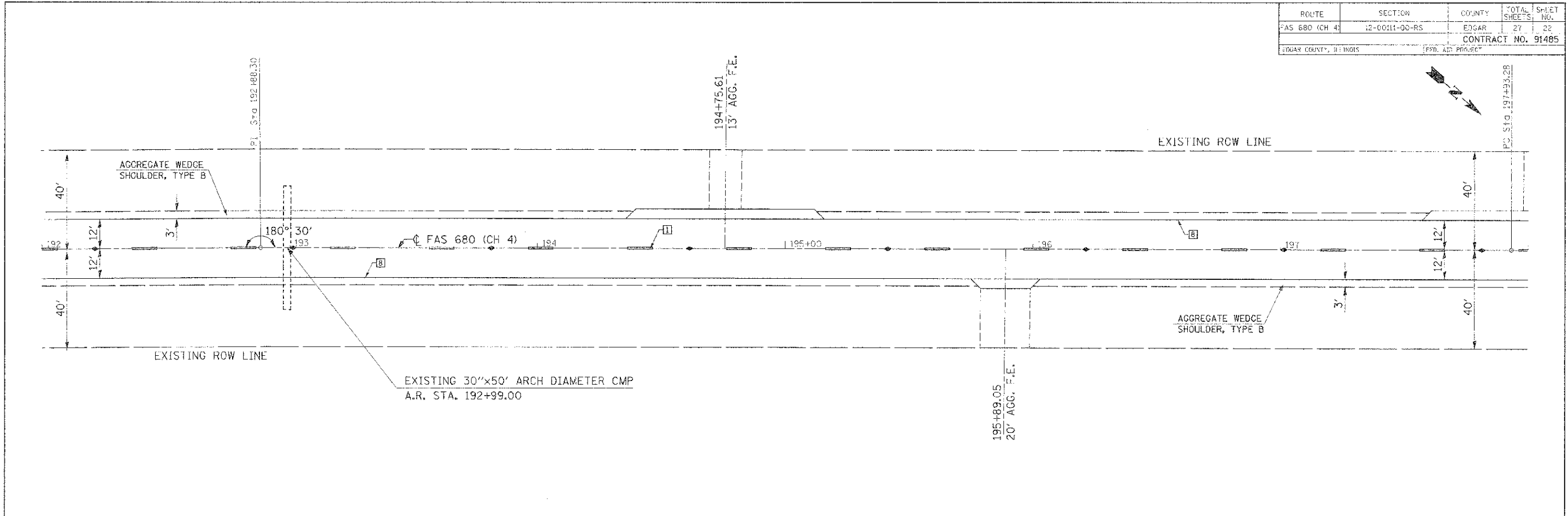


| ROUTE | SECTION | COUNTY | TOTAL SHEETS | SHEET NO. |
|------------------------|---------------|--------|--------------------|-----------|
| FAS 680 (CH 4) | 12-0011-00-RS | EDGAR | 27 | 22 |
| EDGAR COUNTY, ILLINOIS | | | CONTRACT NO. 91485 | |



EXIST. CURVE LOWERT-9
 P.I. STA. = 201+03.15
 $\Delta = 21^\circ 26' 02''$ (RT)
 $\theta = 3^\circ 29' 58''$
 $R = 1,637.28'$
 $f = 308.87'$
 $L = 612.50'$
 $E = 29.05'$
 P.O. STA. = 197+93.28
 P.T. STA. = 204+05.78

TYPICAL PAVEMENT MARKING LEGEND

- 1 4" (100) SKIP-DASH (YELLOW)
- 2 4" (100) SOLID (YELLOW)
- 3 12" (300) DIAGONAL (YELLOW)
- 4 4" (100) DOUBLE YELLOW (NARROW)
- 8 4" (100) SOLID (WHITE)

TYPICAL PAVEMENT MARKERS LEGEND

- ◆ TWO-WAY AMBER MARKER
- ▼ ONE-WAY AMBER MARKER
- ▽ ONE-WAY CRYSTAL MARKER

PLAN
 #DATE#
 SCALE: 1" = 20'



**EDGAR COUNTY
 HIGHWAY DEPARTMENT**

FILE-9