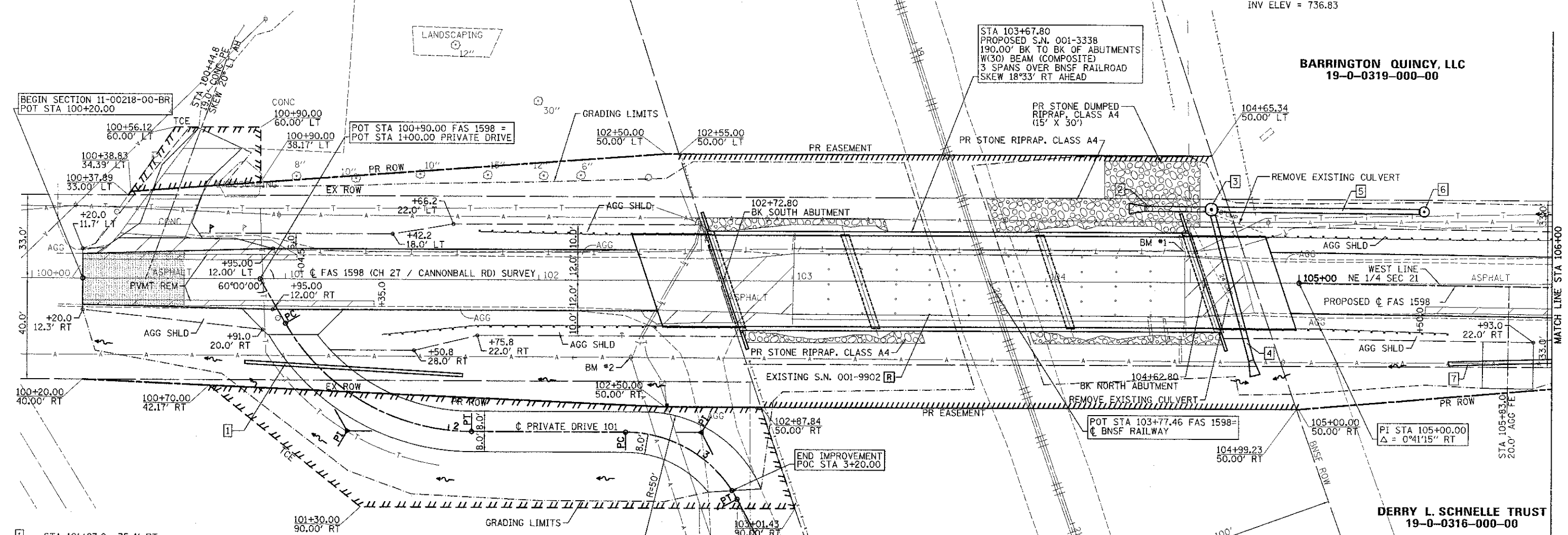


- 2- STORM SEWERS, CLASS A, TYPE 2 24", 24'
 SLOPE = 2.1%
 USFL = 734.50 (104+63.0, 28.9' LT)
 DSFL = 734.00 (104+39.0, 29.1' LT)
 CONC FLARED END SECTION (STD 542301), 24", 1 EACH
- 3- MANHOLE, TYPE A, 5'-DIAMETER, TYPE 1 FRAME, CLOSED LID, 1 EACH
 STA 104+65.3 28.9' LT
 TOP OF LID ELEV. = 743.40
 INV ELEV = 733.90
- 4- STORM SEWERS, CLASS A, TYPE 2 24", 50'
 SLOPE = 4.3%
 USFL = 739.43 (104+81.2, 30.7' RT)
 DSFL = 736.00 (104+65.9, 26.7' LT)
 TRENCH BACKFILL, 72.0 CU YD
 CONC FLARED END SECTION (STD 542301), 24", 1 EACH
- 5- STORM SEWERS, CLASS A, TYPE 2 24", 80'
 SLOPE = 1.4%
 USFL = 737.10 (105+47.2, 29.0' LT)
 DSFL = 736.00 (104+67.6, 28.9' LT)
- 6- MANHOLE, TYPE A, 4'-DIAMETER, WITH MEDIAN INLET (604101), 1 EACH
 STA 105+48.9, 29.0' LT
 TOP OF GRATE ELEV = 741.95
 INV ELEV = 736.83

EICHHORN, KEVIN GALE & BONNIE JEAN
 19-0-0318-000-00

BURLINGTON NORTHERN SANTA FE RAILROAD COMPANY

BARRINGTON QUINCY, LLC
 19-0-0319-000-00



1- STA 101+27.0 35.4' RT
 PIPE CULVERT, CL D, TY 1, 15" Ø, 86'
 USFL = 738.46 (101+70.0, 37.8' RT)
 DSFL = 737.77 (100+84.1, 32.9' RT)

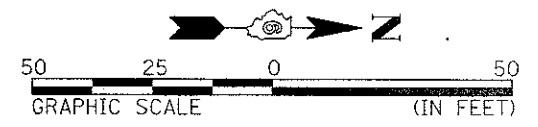
BELIEVERS BROADCASTING CORP
 19-0-0316-002-00

PRIVATE DR CURVE 1 DATA
 PI STA = 1+69.28 (101+24.64 60.00' RT)
 Δ = 60° 00' 00" (LT)
 D = 67° 24' 24"
 R = 85.00'
 T = 49.07'
 L = 89.01'
 E = 13.15'
 S.E. = NONE
 P.C. STA = 1+20.21 (101+00.10 17.50' RT)
 P.T. STA = 2+09.22 (101+73.72 60.00' RT)

PRIVATE DR CURVE 2 DATA
 PI STA = 2+99.94 (102+64.44 60.00' RT)
 Δ = 61° 46' 58" (RT)
 D = 114° 35' 29"
 R = 50.00'
 T = 29.91'
 L = 53.92'
 E = 8.27'
 S.E. = NONE
 P.C. STA = 2+70.03 (102+34.52 60.00' RT)
 P.T. STA = 3+23.94 (102+78.58 86.36' RT)

BENCHMARK #2
 STA 102+36.5 30.4' RT
 RR SPIKE IN POWER POLE
 ELEV = 741.43

BENCHMARK #1
 STA 104+54.7 12.1' LT
 CHISELED "□" ON NORTHWEST CORNER OF BRIDGE
 ELEV = 744.00



| | | | | | | | | | | |
|---|------------------|-----------------------------|-------------------------|--|--|---------------------------|----------------|----------------------------|--------------|----|
| FILE NAME = | USER NAME = seeb | DESIGNED - SEB | REVISED - SEB - 1/16/13 | ADAMS COUNTY HIGHWAY DEPARTMENT | FAS 1598 (CH 27 / CANNONBALL ROAD) PLAN | F.A.S. RTE. | SECTION | COUNTY | TOTAL SHEETS | |
| Gr:\files\110215\05 Plans\Current\SH-LPFB | 110215.dgn | DRAWN - EBB | REVISED - | | | 1598 | 11-00218-00-BR | ADAMS | 53 | 12 |
| | | CHECKED - SRW | REVISED - | | | CONTRACT NO. 93590 | | | | |
| | | DATE - 6-21-12 | REVISED - | | | ILLINOIS FED. AID PROJECT | | | | |
| | | PLOT SCALE = 20,0000' / in. | | SCALE: 1"=50' | | SHEET NO. 1 OF 4 SHEETS | | STA. 100+00 TO STA. 106+00 | | |
| | | PLOT DATE = 1/17/2013 | | | | | | | | |