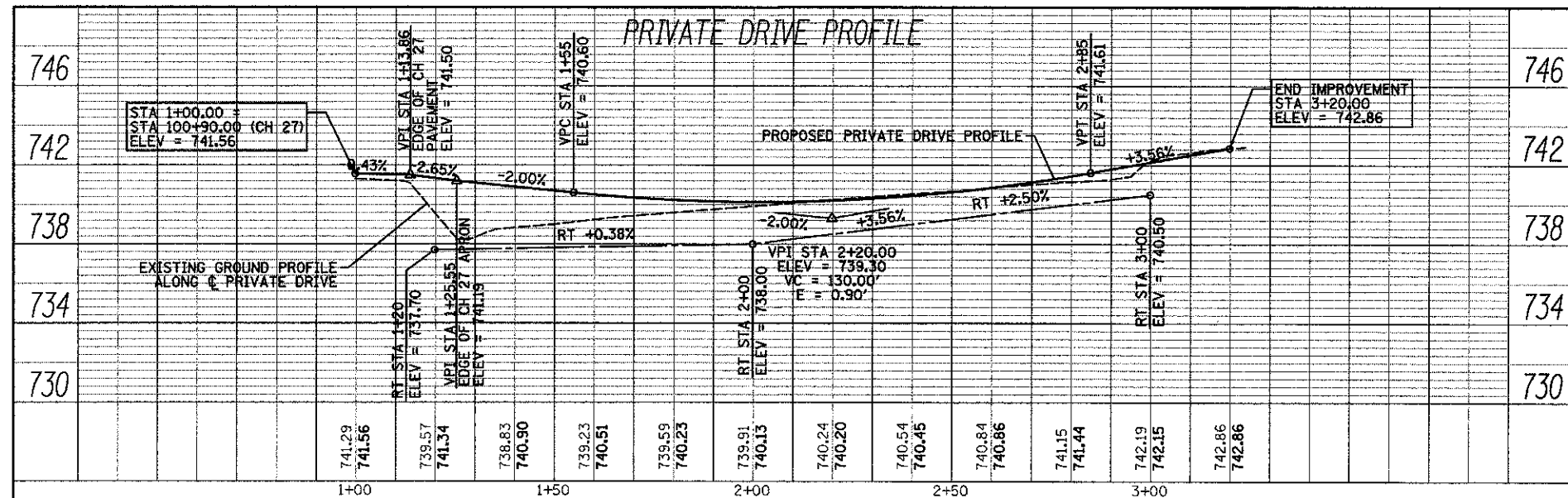


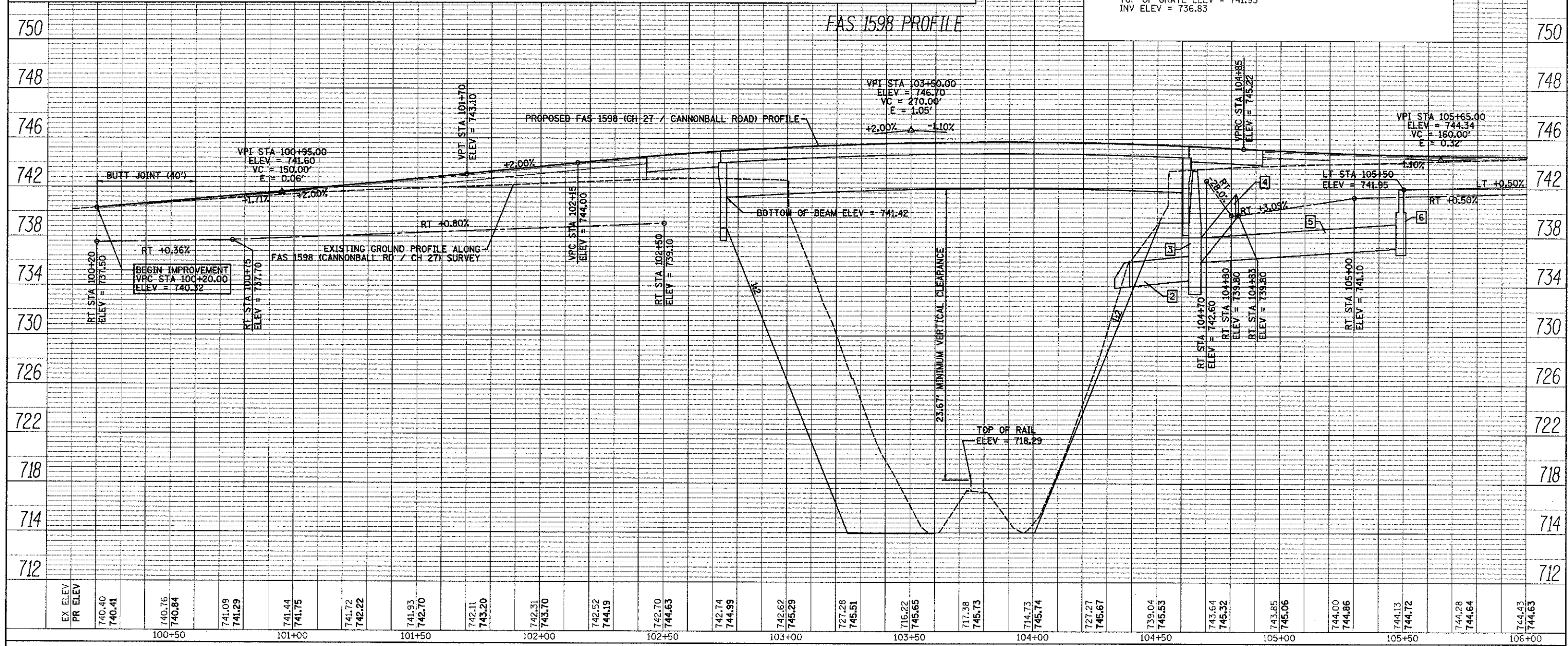
PLAN	DATE
SAVED	BY
NO.	NO.
FILE NAME	FILE NAME

PROFILE	DATE
SAVED	BY
NO.	NO.
FILE NAME	FILE NAME



BENCHMARK #2	BENCHMARK #1
STA 102+36.5 30.4' RT	STA 104+54.7 12.1' LT
RR SPIKE IN POWER POLE	CHISELED "□" ON NORTHWEST CORNER OF BRIDGE
ELEV = 741.43	ELEV = 744.00

- 2- STORM SEWERS, CLASS A, TYPE 2 24", 24'
SLOPE = 2.1%
USFL = 734.50 (104+63.0, 28.9' LT)
DSFL = 734.00 (104+39.0, 29.1' LT)
CONC FLARED END SECTION (STD 542301), 24", 1 EACH
- 3- MANHOLE, TYPE A, 5'-DIAMETER, TYPE 1 FRAME, CLOSED LID, 1 EACH
STA 104+65.3 28.9' LT
TOP OF LID ELEV = 743.40
INV ELEV = 733.90
- 4- STORM SEWERS, CLASS A, TYPE 2 24", 50'
SLOPE = 4.3%
USFL = 739.43 (104+81.2, 30.7' RT)
DSFL = 736.00 (104+65.9, 26.7' LT)
TRENCH BACKFILL, 72.0 CU YD
CONC FLARED END SECTION (STD 542301), 24", 1 EACH
- 5- STORM SEWERS, CLASS A, TYPE 2 24", 80'
SLOPE = 1.4%
USFL = 737.10 (105+47.2, 29.0' LT)
DSFL = 736.00 (104+67.6, 28.9' LT)
- 6- MANHOLE, TYPE A, 4'-DIAMETER, WITH MEDIAN INLET (604101), 1 EACH
STA 105+48.9 29.0' LT
TOP OF GRATE ELEV = 741.95
INV ELEV = 736.83



FILE NAME =	USER NAME = seb	DESIGNED - SEB	REVISED - SEB - 1/16/13
Gr:\11\files\110015\06 Plans\Current\SH_PP01_10215.dgn		DRAWN - EBB	REVISED -
		CHECKED - SRW	REVISED -
		DATE - 6-21-12	REVISED -

**ADAMS COUNTY
HIGHWAY DEPARTMENT**

**FAS 1598 (CH 27 / CANNONBALL ROAD)
PROFILE**

SCALE: NONE SHEET NO. 2 OF 4 SHEETS STA. 100+00 TO STA. 106+00

F.A.S. RTE.	SECTION	COUNTY	TOTAL SHEETS	SHEET NO.
1598	11-00218-00-BR	ADAMS	53	13
				CONTRACT NO. 93590
ILLINOIS FED. AID PROJECT				