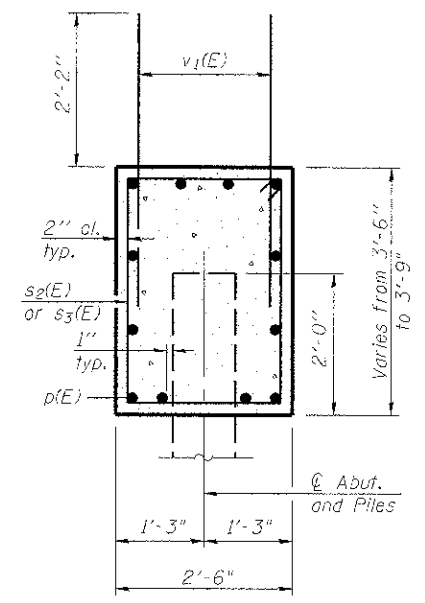
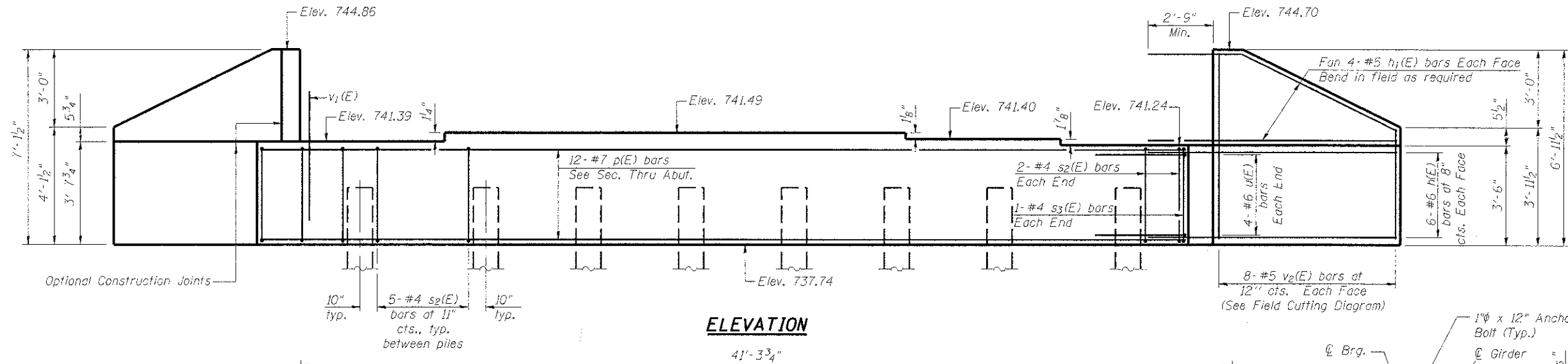
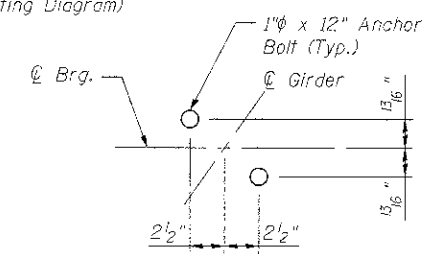


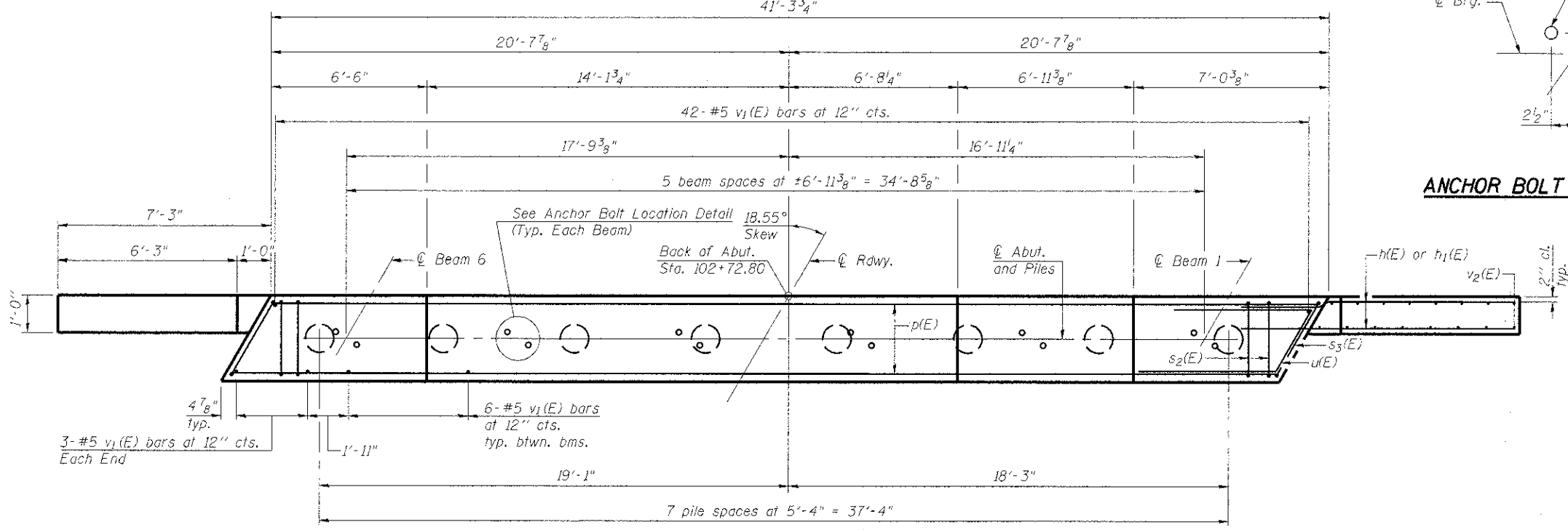
Notes:
 Pour steps monolithically with cap.
 Space reinforcement to miss anchor bolts.



SEC. THRU ABUT.



ANCHOR BOLT LOCATION DETAIL

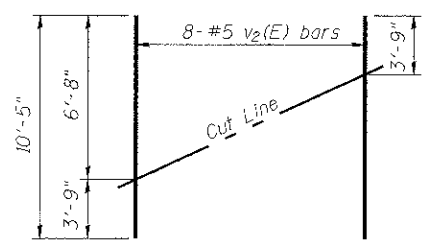


PLAN

PILE DATA

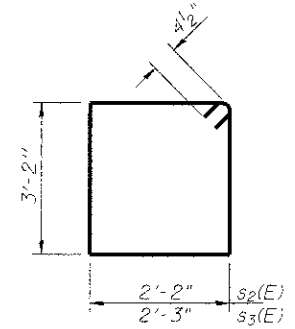
Type: Metal Shell - 14"φ with 0.25" walls
 Nominal Required Bearing: 298 Kips/Pile
 Factored Resistance Available: 164 Kips/Pile
 Est. Length: 37 Ft./Pile
 No. Production Piles: 7
 No. Test Piles: 1*

* Driven to 110% NRB in production location.

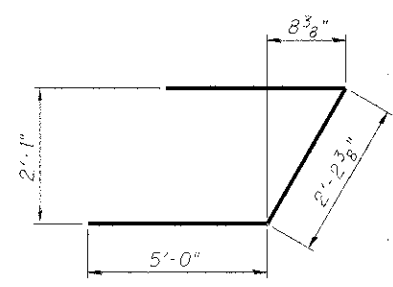


FIELD CUTTING DIAGRAM

Order v2(E) full length. Cut as shown and use remainder of bars in opposite face.



BARS s2(E) & s3(E)



BAR u(E)

BILL OF MATERIAL

Bar	No.	Size	Length	Shape	
h(E)	24	#6	9'-10"	—	
h1(E)	16	#5	10'-6"	—	
p(E)	12	#7	40'-11"	—	
s2(E)	39	#4	11'-5"	□	
s3(E)	2	#4	11'-7"	□	
u(E)	8	#6	12'-3"	└	
v1(E)	78	#5	4'-4"	—	
v2(E)	16	#5	10'-5"	—	
Structure Excavation				Cu. Yd.	98
Concrete Structures				Cu. Yd.	17.1
Reinforcement Bars, Epoxy Coated				Pound	2,520
Furnishing Metal Shell Piles 14" x 0.250"				Foot	259
Driving Piles				Foot	259
Test Pile Metal Shells				Each	1

For details of piles, see Sheet 25 of 29.