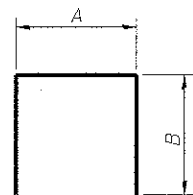


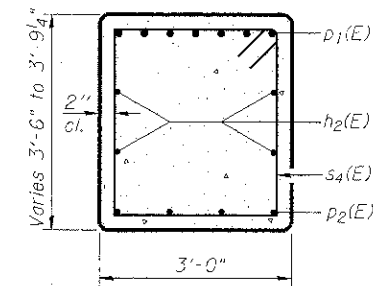
**ANCHOR BOLT LOCATION DETAIL**



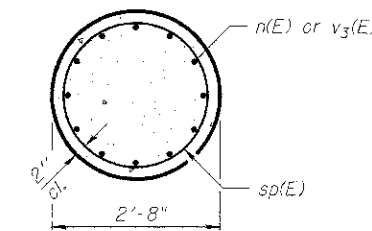
**s5(E), s6(E) & s7(E) BARS**

**A & B DIMENSIONS**

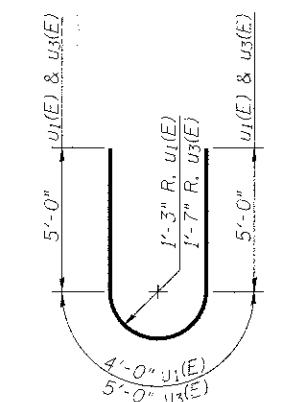
Bar	A	B
s5(E)	2'-8"	2'-6"
s6(E)	3'-4"	6'-9"
s7(E)	3'-4"	7'-3"



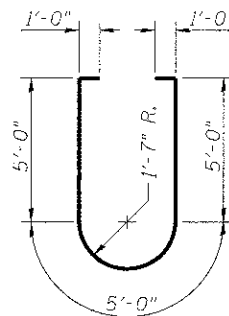
**SEC. A-A**



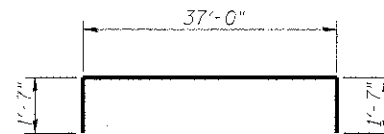
**SEC. B-B**



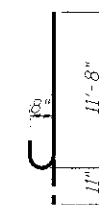
**BARS u1(E) & u3(E)**



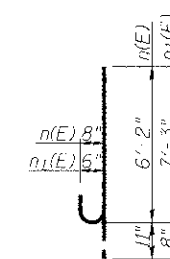
**BAR u2(E)**



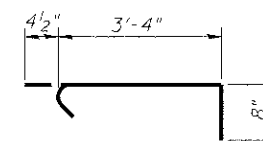
**BAR p1(E)**



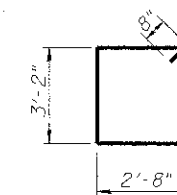
**BAR v3(E)**



**BARS n(E) & n1(E)**



**BAR s8(E)**



**BAR s4(E)**

(Sheet 2 of 2)

FILE NAME =	USER NAME = hgj	DESIGNED - ADL	REVISED -	<b>ADAMS COUNTY HIGHWAY DEPARTMENT</b>	<b>PIER 1 DETAILS S.N. 001-3338</b>	F.A.P. RTE. 1598	SECTION 11-00218-00-BR	COUNTY ADAMS	TOTAL SHEETS 53	SHEET NO. 37	
D:\11\files\110215\05 Plans\Bridges Plans Without Structural Steel\PIERS.ogn	PLOT SCALE = 0.083262 / / IN.	CHECKED - RJP	REVISED -			SHEET NO. 21 OF 29 SHEETS		CONTRACT NO. 93530		ILLINOIS FED. AID PROJECT	
	PLOT DATE = 11/5/2012	DRAWN - RJP	REVISED -			Klingner & Associates P.C.					
		CHECKED - ADL	REVISED -								