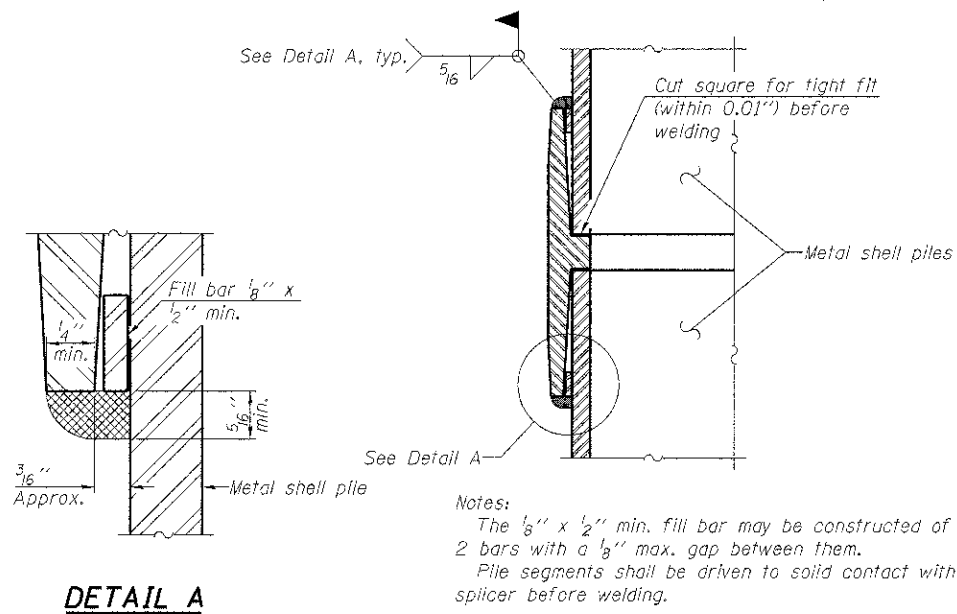


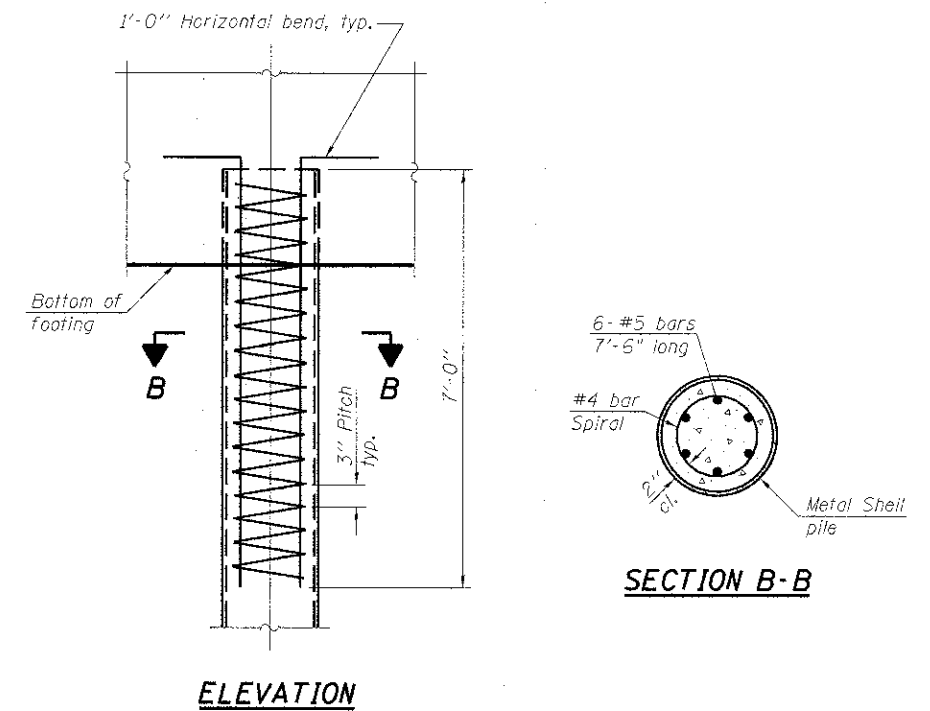
METAL SHELL PILE TABLE

Designation and outside diameter	Wall thickness t	Weight per foot (Lbs./ft.)	Inside volume (yd. ³ /ft.)
PP12	0.179"	22.60	0.0274
PP12	0.250"	31.37	0.0267
PP14	0.250"	36.71	0.0368
PP14	0.312"	45.61	0.0361

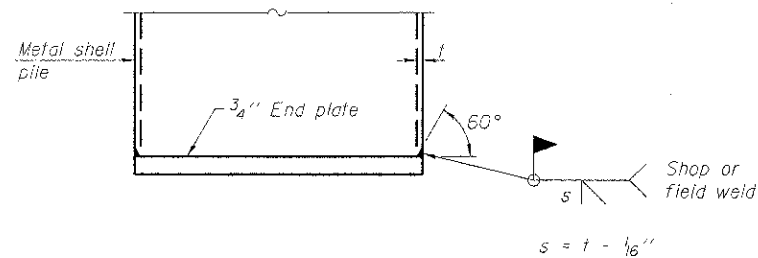


DETAIL A

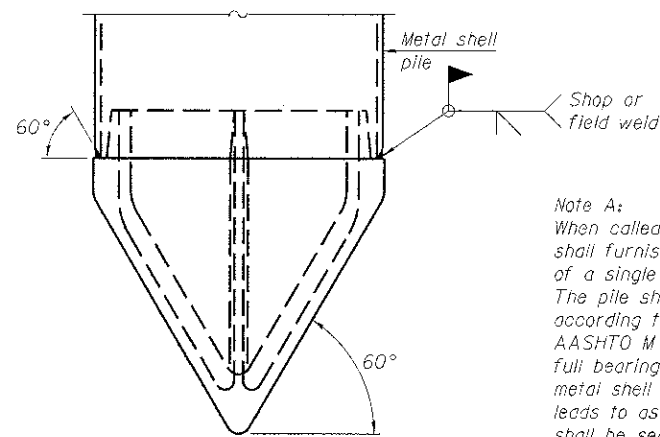
WELDED COMMERCIAL SPLICE



METAL SHELL REINFORCEMENT AT PIERS



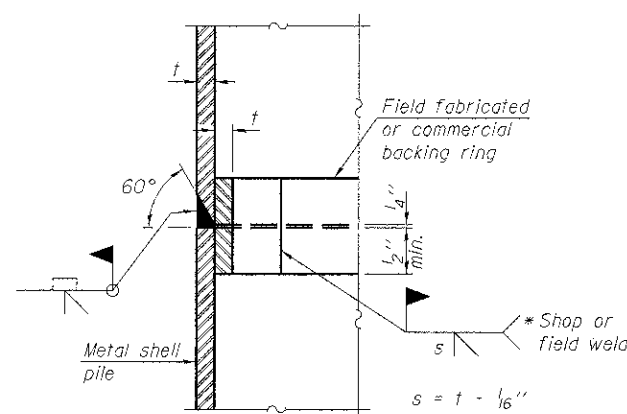
END PLATE ATTACHMENT



METAL SHELL PILE SHOE ATTACHMENT

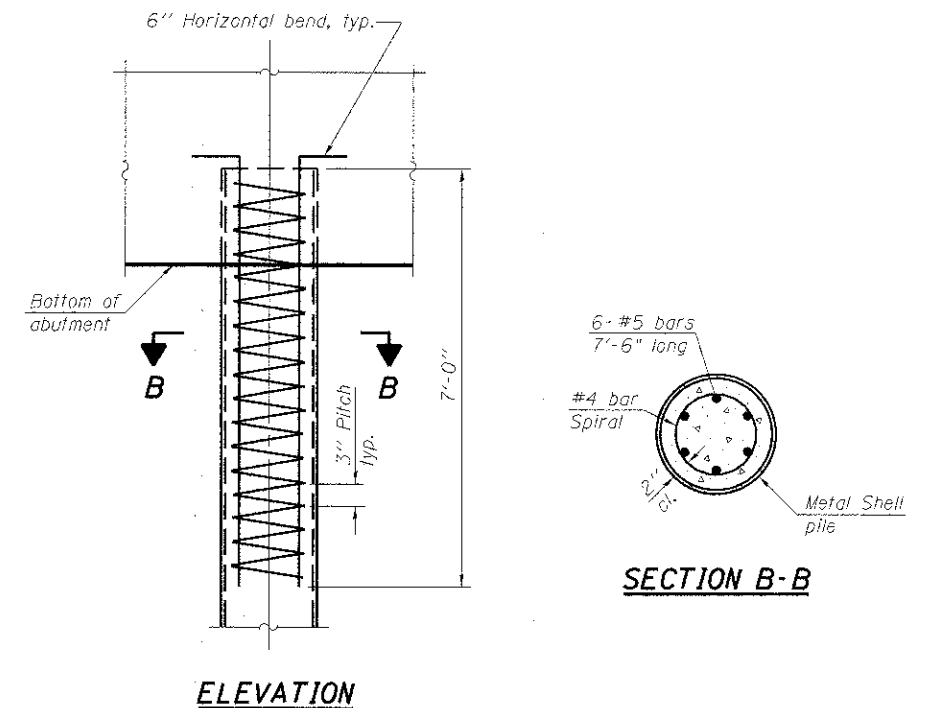
(See Note A)

Note A:
 When called for on the plans, the Contractor shall furnish metal shell pile shoes consisting of a single piece conical pile point as shown. The pile shoes shall be cast in one piece steel according to either ASTM A 148 Grade 90-60 or AASHTO M 103 Grade 65-35 and shall provide full bearing over the full circumference of the metal shell pile. The pile shoe shall have tapered leads to assure proper alignment and fitting and shall be secured to the pile with a circumferential weld.



COMPLETE PENETRATION WELD SPLICE

* Field fabricated backing ring may be made from pile shell by removing segment to allow reducing circumference and vertically rejoin with partial joint penetration weld.



METAL SHELL REINFORCEMENT AT ABUTMENTS

Note:
 The metal shell piles shall be according to ASTM A 252 Grade 3.

FILE NAME =	USER NAME = bgj	DESIGNED - ADL	REVISED -	<p>ADAMS COUNTY HIGHWAY DEPARTMENT</p>	<p>METAL SHELL PILE DETAILS S.N. 001-3338</p>	F.A.P. RTE.	SECTION	COUNTY	TOTAL SHEETS	SHEET NO.
G:\11\files\110015\02 Plans\Range Plans\Without Structural Steel\Metal Shell Piles.dgn		CHECKED - RJP	REVISED -			1598	11-00218-00-BR	ADAMS	53	41
PLOT SCALE = 0.263299 1/16" IN.		DRAWN - RJP	REVISED -			<p>CONTRACT NO. 93590</p>				
PLOT DATE = 11/5/2012		CHECKED - ADL	REVISED -			<p>SHEET NO. 25 OF 29 SHEETS</p>				