

STANDARD BAR SPLICER ASSEMBLY

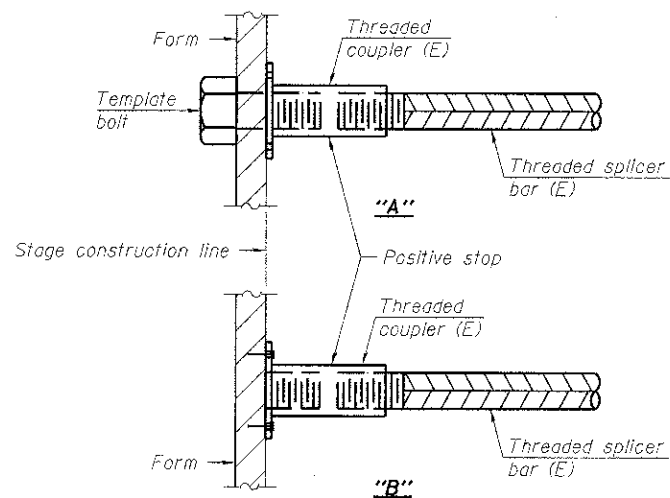
Minimum Lap Lengths					
Bar size to be spliced	Table 1	Table 2	Table 3	Table 4	Table 5
3, 4	1'-5"	1'-11"	2'-1"	2'-4"	2'-3"
5	1'-9"	2'-5"	2'-7"	2'-11"	2'-10"
6	2'-1"	2'-11"	3'-1"	3'-6"	3'-4"
7	2'-9"	3'-10"	4'-2"	4'-8"	4'-6"
8	3'-8"	5'-1"	5'-5"	6'-2"	5'-10"
9	4'-7"	6'-5"	6'-10"	7'-9"	7'-5"

- Table 1: Black bar, 0.8 Class C
- Table 2: Black bar, Top bar lap, 0.8 Class C
- Table 3: Epoxy bar, 0.8 Class C
- Table 4: Epoxy bar, Top bar lap, 0.8 Class C
- Table 5: Epoxy bar, Top bar lap, Class B

Threaded splicer bar length = min. lap length + 1/2" + thread length

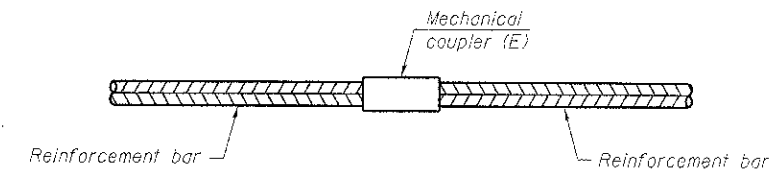
* Epoxy not required on Bar Splicer Assembly components used in conjunction with black bars.

Location	Bar size	No. assemblies required	Table for minimum lap length



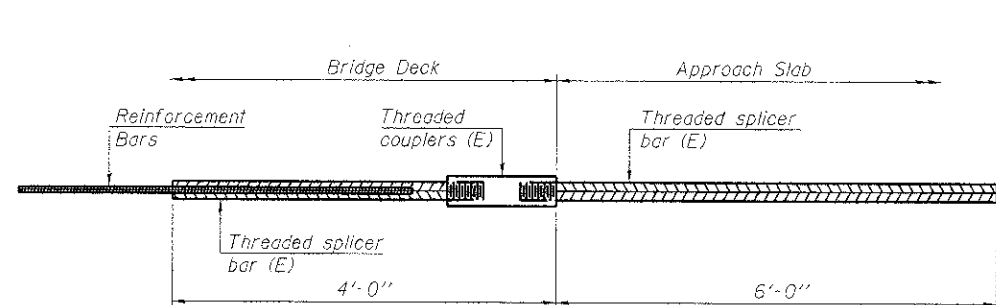
INSTALLATION AND SETTING METHODS

"A" : Set bar splicer assembly by means of a template bolt.
 "B" : Set bar splicer assembly by nailing to wood forms or cementing to steel forms.
 (E) : Indicates epoxy coating.



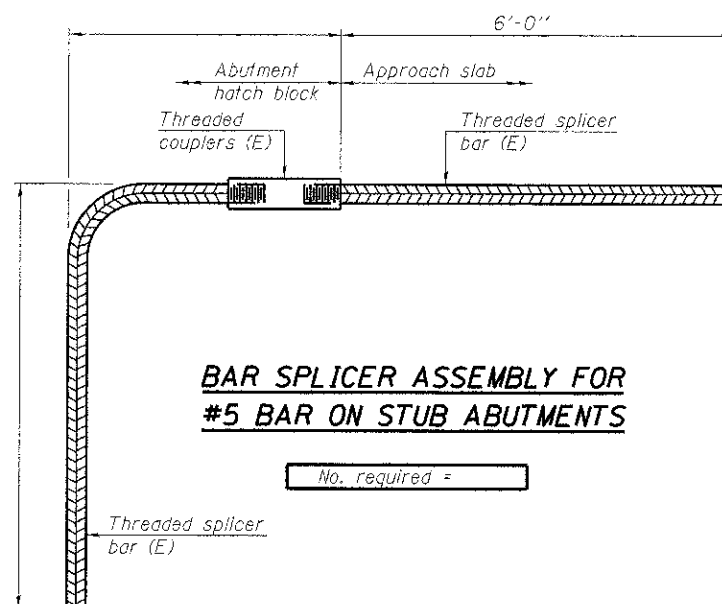
STANDARD MECHANICAL SPLICER

Location	Bar size	No. assemblies required
Pier 1	#6	88
Pier 1	#8	36
Pier 2	#6	88
Pier 2	#8	36



BAR SPLICER ASSEMBLY FOR #5 BAR ON INTEGRAL OR SEMI-INTEGRAL ABUTMENTS

No. required = 84



BAR SPLICER ASSEMBLY FOR #5 BAR ON STUB ABUTMENTS

No. required =

NOTES

- Splicer bars shall be deformed with threaded ends and have a minimum 60 ksi yield strength.
- All reinforcement shall be lapped and tied to the splicer bars.
- Bar splicer assemblies shall be epoxy coated according to the requirements for reinforcement bars. See Section 508 of the Standard Specifications.
- See special provision for Mechanical Splicers.
- See approved list of bar splicer assemblies and mechanical splicers for alternatives.

BSD-1 7-1-10

FILE NAME = G:\11\files\110015\25 Plans\Bridge Plans Without Structure\Steel\Bar Splicers.dgn	DESIGNED - ADL	REVISD -	ADAMS COUNTY HIGHWAY DEPARTMENT	BAR SPLICER ASSEMBLY AND MECHANICAL SPLICER DETAILS S.N. 001-3338	F.A.P. RTE. 1598	SECTION 11-00218-00-BR	COUNTY ADAMS	TOTAL SHEETS 53	SHEET NO. 42
PLOT SCALE = 0.003200 / 1/8"	CHECKED - RJP	REVISD -			CONTRACT NO. 93590				
PLOT DATE = 11/5/2012	DRAWN - RJP	REVISD -			ILLINOIS FED. AID PROJECT				
	CHECKED - ADL	REVISD -			SHEET NO. 26 OF 29 SHEETS				