

F.A.U. RTE.	SECTION	COUNTY	TOTAL SHEETS	SHEET NO.
8006	10-00470-00-BR	SANGAMON	90	1
FED. ROAD DIST. NO.		ILLINOIS	CONTRACT NO. 93600	

**INDEX OF SHEETS**

1	TITLE SHEET
2	GENERAL NOTES, COMMITMENTS & MIXTURE REQUIREMENTS
3 - 11	SUMMARY OF QUANTITIES
12 - 13	TYPICAL SECTIONS
14 - 15	QUANTITY SCHEDULES
16	ALIGNMENT, TIES & BENCHMARKS
17 - 19	PLAN AND PROFILE
20	DRAINAGE PLAN
21 - 23	SANITARY SEWER PLANS
24 - 35	STAGE CONSTRUCTION TRAFFIC DETAILS
36	EROSION CONTROL PLAN
37	GRADING PLAN
38	GEOTEXTILE RETAINING WALL
39	ENTRANCE AND SIDEROAD DETAILS
40	PAVEMENT MARKING DETAILS
41 - 68	STRUCTURE PLANS
69 - 90	CROSS SECTIONS

STATE OF ILLINOIS  
CITY OF SPRINGFIELD

**PLANS FOR PROPOSED  
IMPROVEMENT FOR**

**SURFACE TRANSPORTATION/BRIDGE PROGRAM  
F.A.U. 8006 (CHATHAM ROAD)  
SECTION 10-00470-00-BR  
PROJECT BRM-5146(080) / JOB NUMBER C-96-203-11  
SANGAMON COUNTY**

**LIST OF ILLINOIS DOT HIGHWAY STANDARDS**

000001-06	602411-03	701321-13
001006	602601-02	701606-08
280001-07	602701-02	701801-05
420401-09	604001-03	701901-02
424001-07	604006-04	704001-07
424026-01	604036-02	780001-03
515001-03	604066-02	781001-03
542301-03	604086-02	814001-02
602301-03	606001-05	886001-01
602306-03	701006-04	886006-01
602406-05	701306-03	BLR21-9

**LIST OF UTILITIES**

AT&T  
529 S. 7TH STREET  
FLOOR 3B  
SPRINGFIELD, IL. 62703  
ATTN: TERESA MAYER 789-8666

COMCAST  
711 SOUTH DIRKSEN PARKWAY  
SPRINGFIELD, IL. 62703  
ATTN: ROB DAVIS 788-5898 X 68232

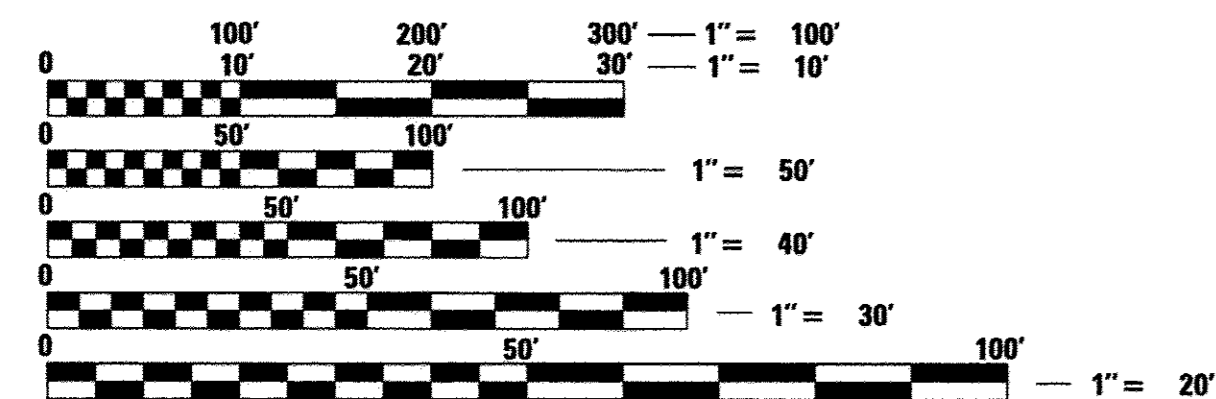
CITY WATER LIGHT & POWER - WATER DEPT.  
401 N. 11TH STREET  
SPRINGFIELD, IL. 62702  
ATTN: STEVE STEWART

SPRINGFIELD SANITARY DISTRICT  
3017 NORTH 8TH STREET  
SPRINGFIELD, IL. 62707  
ATTN: GREGG HUMPHREY 528-0491

CITY WATER LIGHT & POWER - ELECTRIC DEPT.  
1008 EAST MILLER STREET  
SPRINGFIELD, IL. 62702  
ATTN: ROB CUNNINGHAM 757-8520

AMEREN  
825 NORTH MACARTHUR  
SPRINGFIELD, IL. 62702  
ATTN: RICK COMBS 753-5187 (GAS)

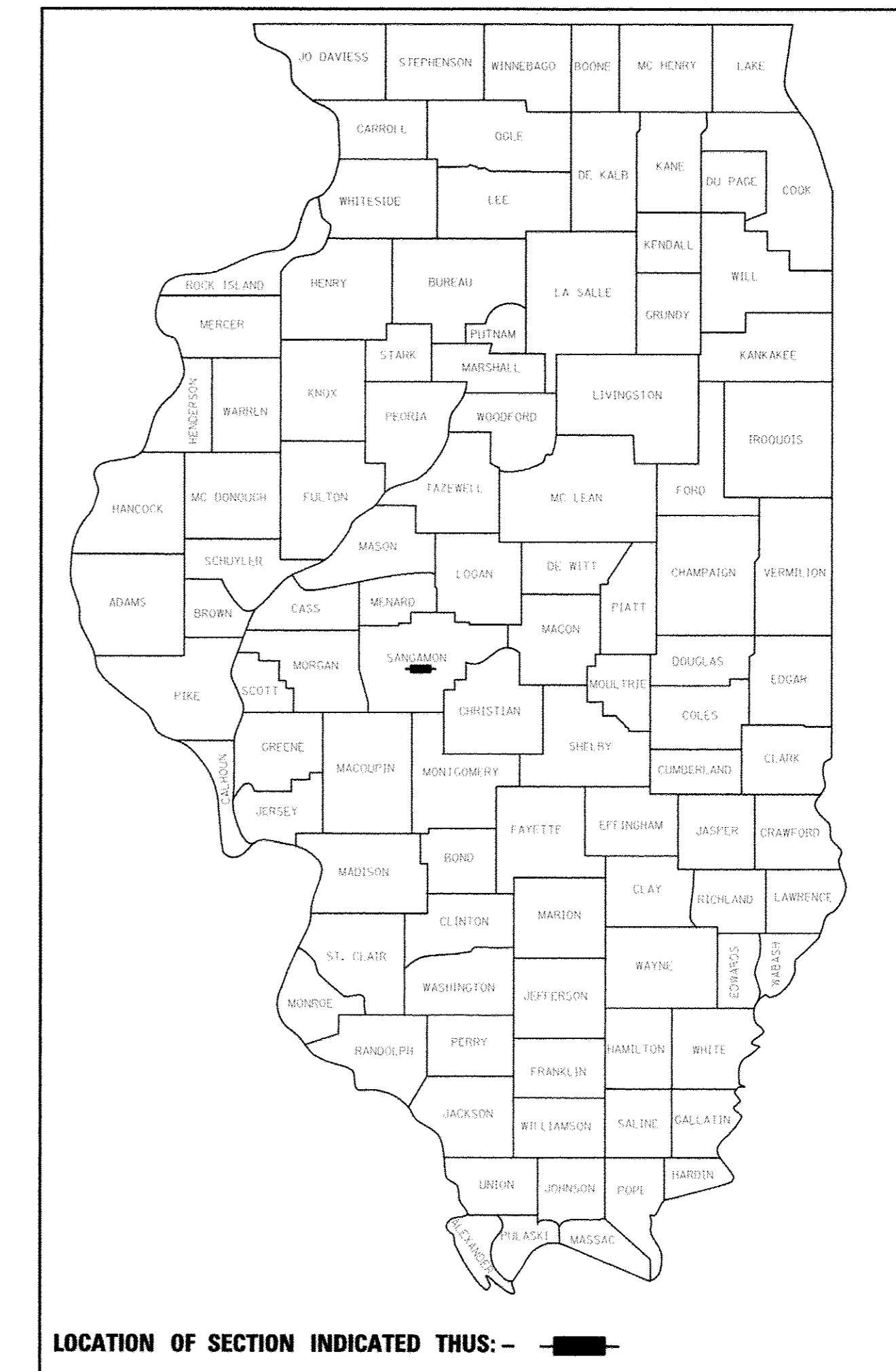
CITY OF SPRINGFIELD - PUBLIC WORKS  
7TH & MONROE STREETS  
ROOM 201 MUNICIPAL CENTER WEST  
SPRINGFIELD, IL. 62701  
ATTN: NATHAN BOTTOM 789-2260



FULL SIZE PLANS HAVE BEEN PREPARED USING STANDARD ENGINEERING SCALES. REDUCED SIZED PLANS WILL NOT CONFORM TO STANDARD SCALES. IN MAKING MEASUREMENTS ON REDUCED PLANS, THE ABOVE SCALES MAY BE USED.

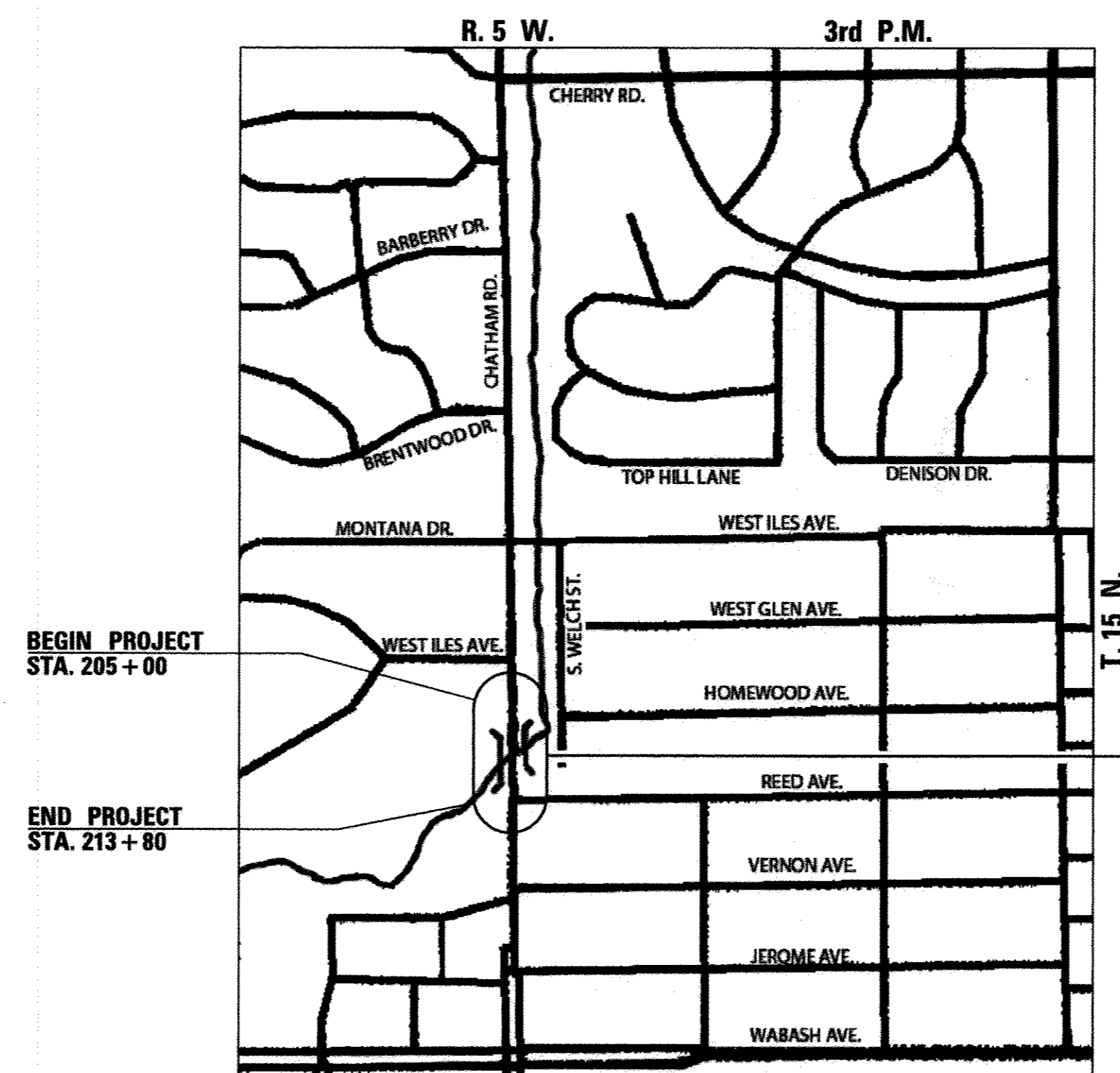
J.U.L.E.  
JOINT UTILITY LOCATION INFORMATION FOR EXCAVATION  
1-800-892-0123  
OR 811

CONTRACT No. **93600**

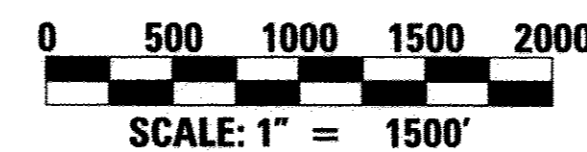


LOCATION OF SECTION INDICATED THUS: -

DESIGN ADT: 20368 (2032)  
FUNCTIONAL CLASSIFICATION: MINOR ARTERIAL (URBAN) (TWS-4)  
DESIGN SPEED: 35 MPH

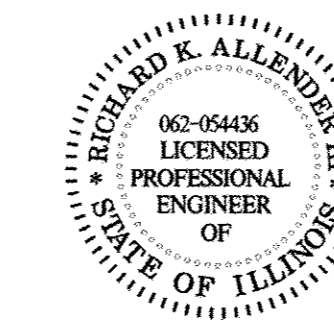


BRIDGE REMOVAL AND REPLACEMENT WITH APPROACH ROADWAY WORK. PROPOSED PPC DECK BEAM BRIDGE 127'-2" BK.-BK. ABUTMENTS 75'-0" OUT.-OUT. DECK SKEW 45° RT. FWD. EX S.N. 084-3041 PR S.N. 084-6019



**LOCATION MAP - SPRINGFIELD, IL**

LENGTH OF SECTION - 880.00 FEET = 0.167 MILES



*Richard K. Alleder III* 3/15/13  
EXPIRATION: 11/30/2013

APPROVED March 5, 2013  
*Nathan Bottom*  
SPRINGFIELD CITY ENGINEER


PASSED 3-12, 2013  
*Teresa Hester*  
DISTRICT SIX ENGINEER OF LOCAL ROADS & STREETS

PASSED 3-12, 2013  
*Ron Chamberlain*  
DISTRICT SIX CONSTRUCTION ENGINEER

Releasing For Bid Based on Limited Review 3-12, 2013  
*Ron Chamberlain*  
DEPUTY DIRECTOR OF HIGHWAYS, REGION FOUR ENGINEER

STATE OF ILLINOIS  
DEPARTMENT OF TRANSPORTATION

**PRINTED BY THE AUTHORITY  
OF THE CITY OF SPRINGFIELD**

 Allen Henderson & Associates, Inc.  
Civil and Structural Engineers Springfield, IL.  
62703 Phone: (217)544-8033 IL Design Firm  
No. 184-001907