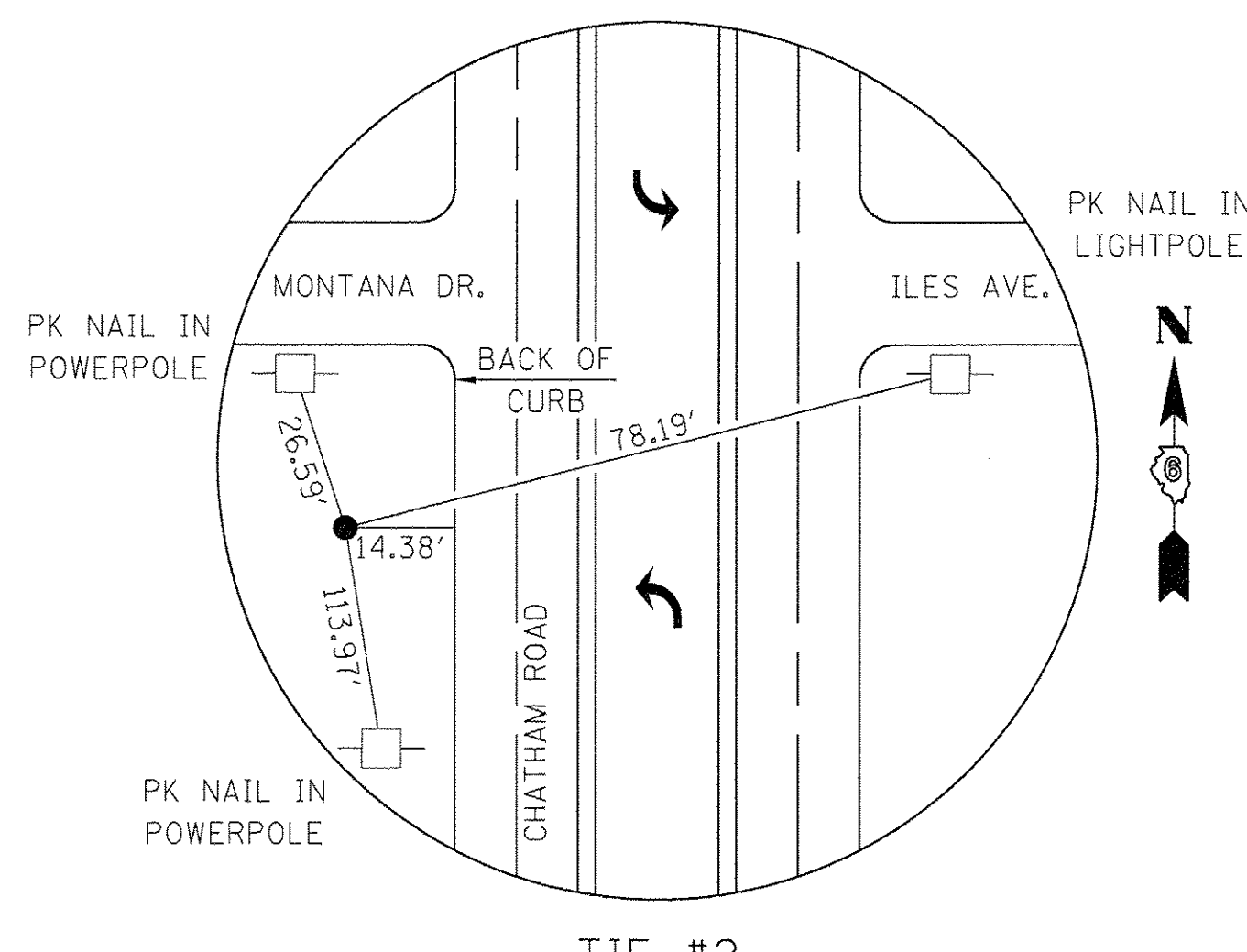


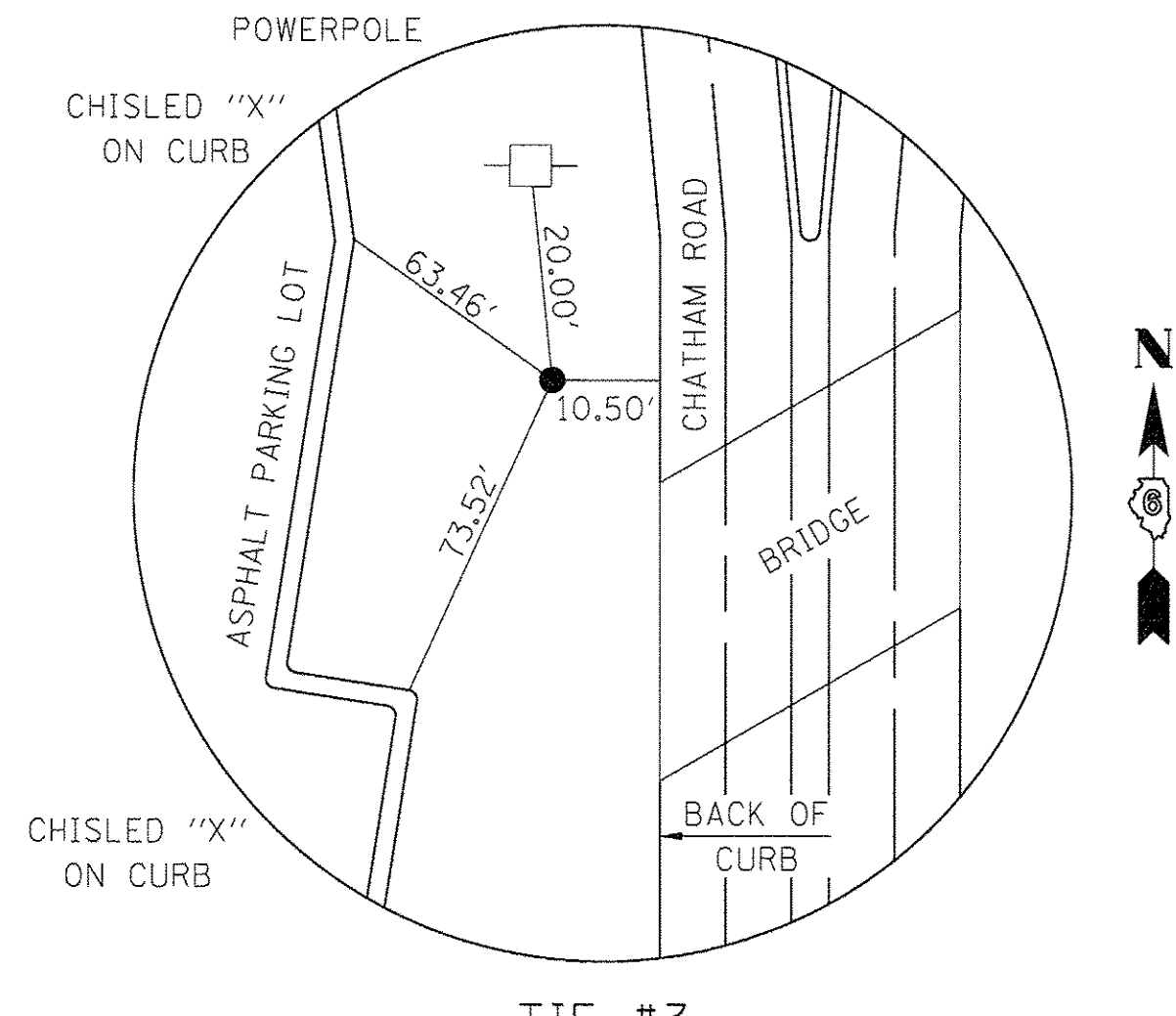
TIE #1

REBAR WITH PIN CAP
STA. 202+45.91, 55.60' RT.
N: 1130385.5000
E: 2431375.8300



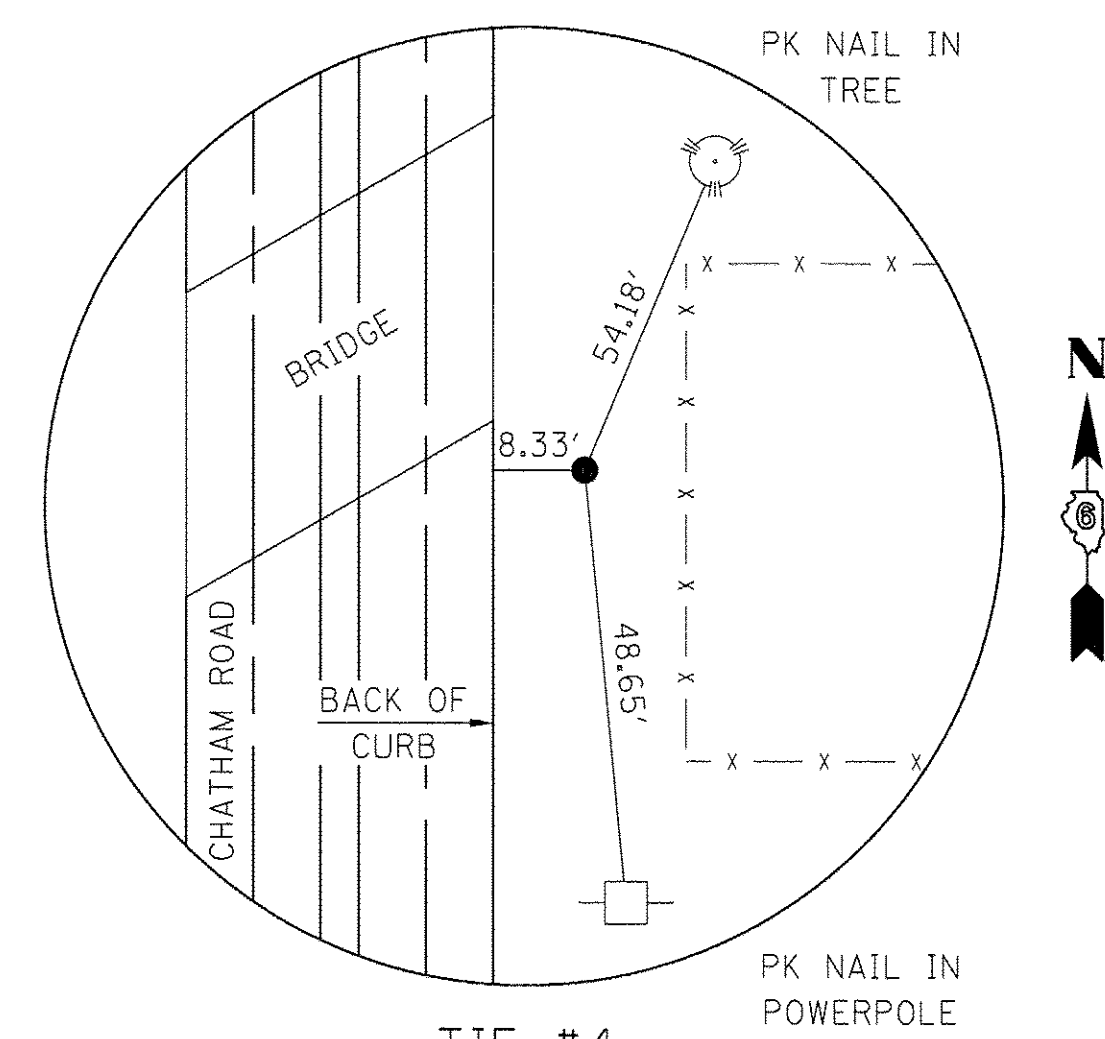
TIE #2

REBAR WITH PIN CAP
STA. 199+13.33, 38.79' RT.
N: 1130718.2700
E: 2431388.2900



TIE #3

REBAR WITH PIN CAP
STA. 207+79.01, 37.03' RT.
N: 1129852.6000
E: 2431401.4600



TIE #4

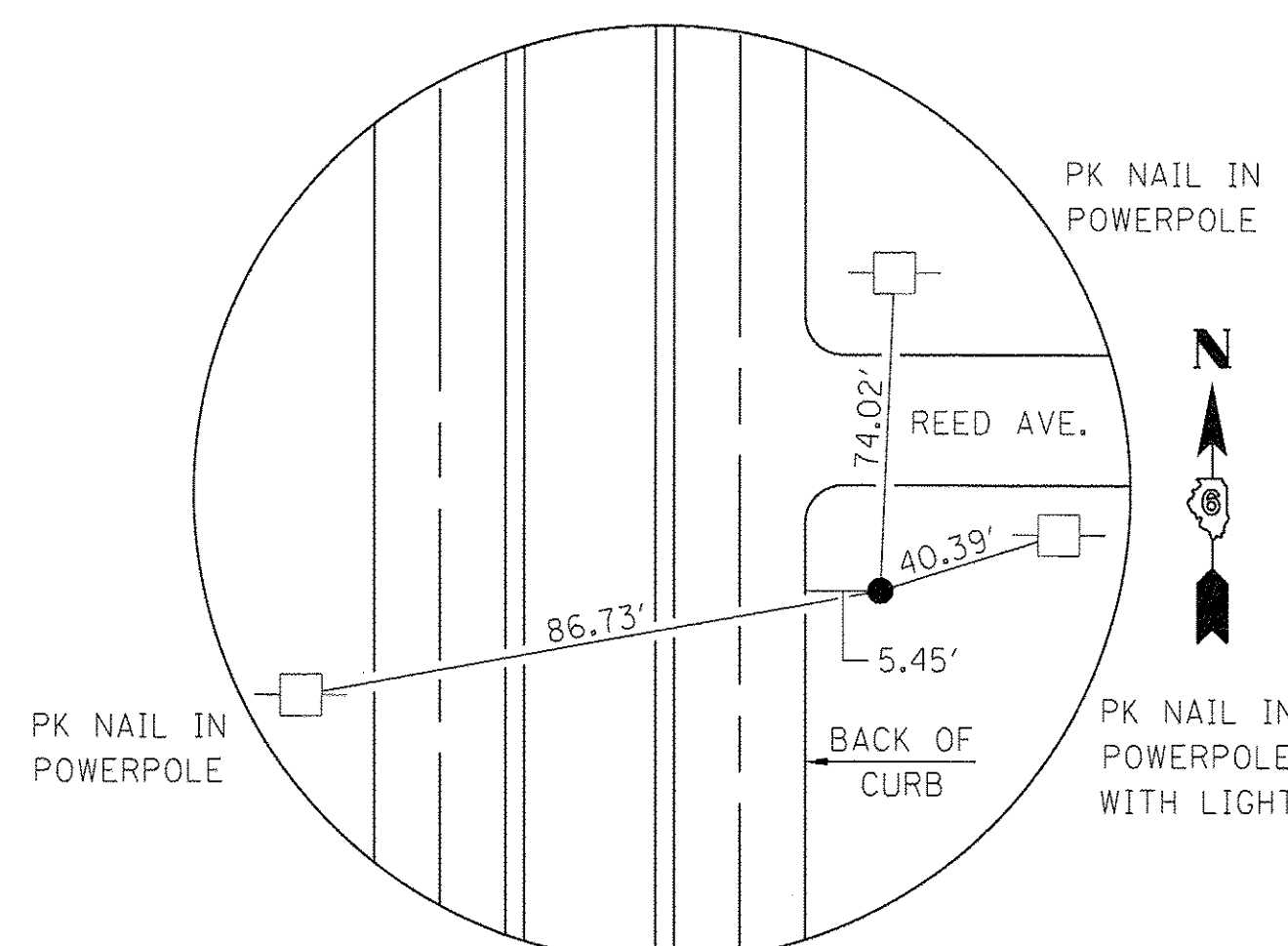
REBAR WITH PIN CAP
STA. 208+54.76, 33.09' LT.
N: 1129777.9500
E: 2431472.7500

COORDINATES

POT STA. 204+05.18	N: 2431433.5100 E: 1130226.9700
POT STA. 206+01.12	N: 2431435.7100 E: 1130031.0500
POT STA. 210+51.72	N: 2431442.5700 E: 1129580.5000
POT STA. 210+51.72	N: 2431442.5700 E: 1129580.5000

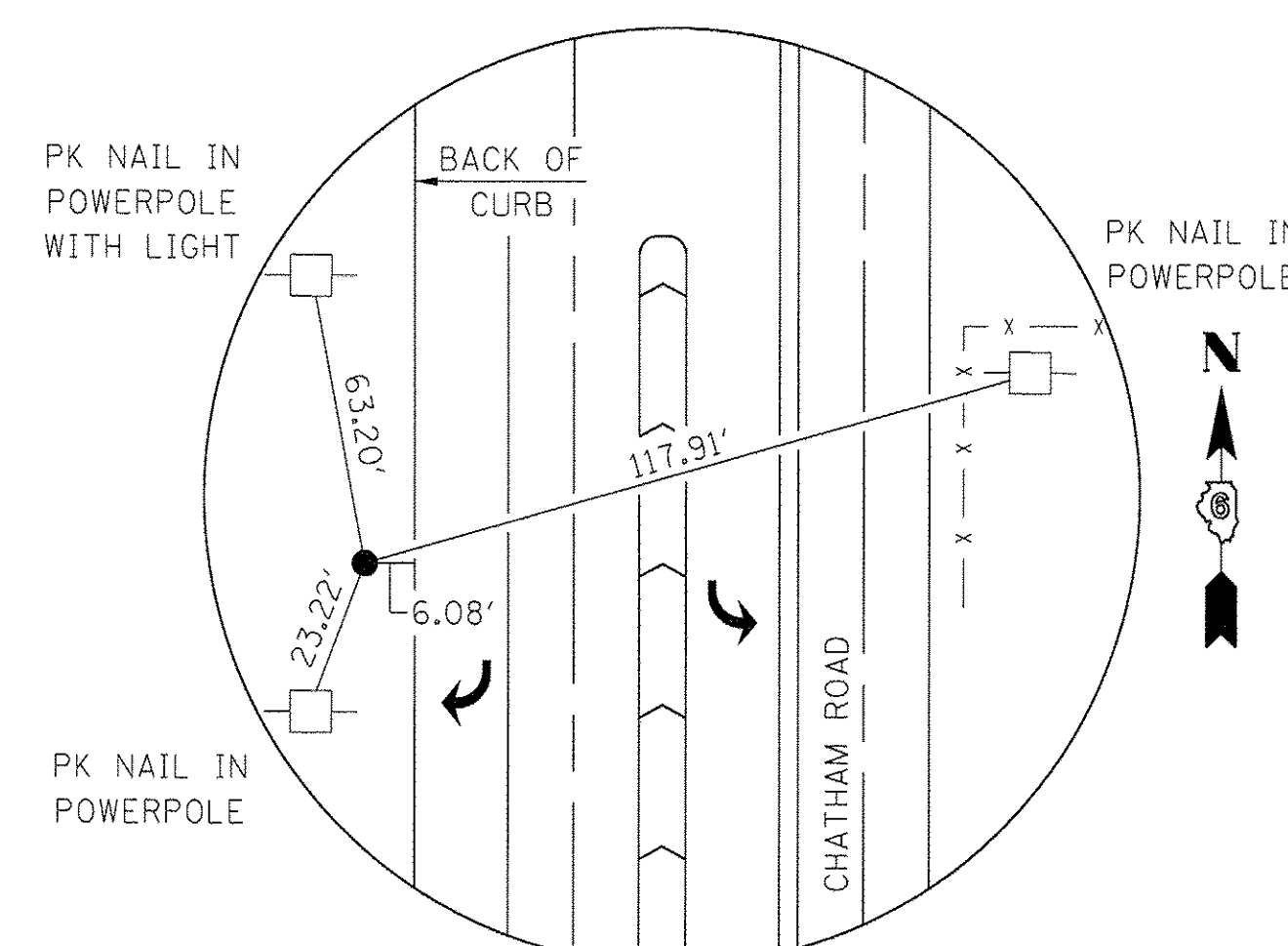
BENCHMARKS

BM	STA	OFFSET	ELEV	DESC
A	210+56.06	38.54' LT	577.55	"M" IN MUELLER ON FIRE HYDRANT AT THE N.E. CORNER OF CHATHAM ROAD AND REED AVENUE
B	204+51.46	70.15' RT	576.90	NORTH CAP BOLT ON FIRE HYDRANT AT THE S.W. CORNER OF CHATHAM ROAD AND ILES AVENUE



TIE #5

REBAR WITH PIN CAP
STA. 211+39.84, 29.97' LT.
N: 1129492.7800
E: 2431473.8500



TIE #6

REBAR WITH PIN CAP
STA. 217+58.92, 50.18' RT.
N: 1128872.4600
E: 2431403.7800



Allen Henderson & Associates, Inc.
Civil and Structural Engineers Springfield, IL.
62703 Phone: (217)544-8033 IL Design Firm
No. 184-001907

ALIGNMENT, TIES & BENCHMARKS

SCALE: NONE SHEET NO. 1 OF 1 SHEETS STA. TO STA.

F.A.U. RTE.	SECTION	COUNTY	TOTAL SHEETS	SHEET NO.
8006	10-00470-00-BR	SANGAMON	90	16
CONTRACT NO 9 3.6.0.0				
FED. ROAD DIST. NO. ILLINOIS FED. AID PROJECT				