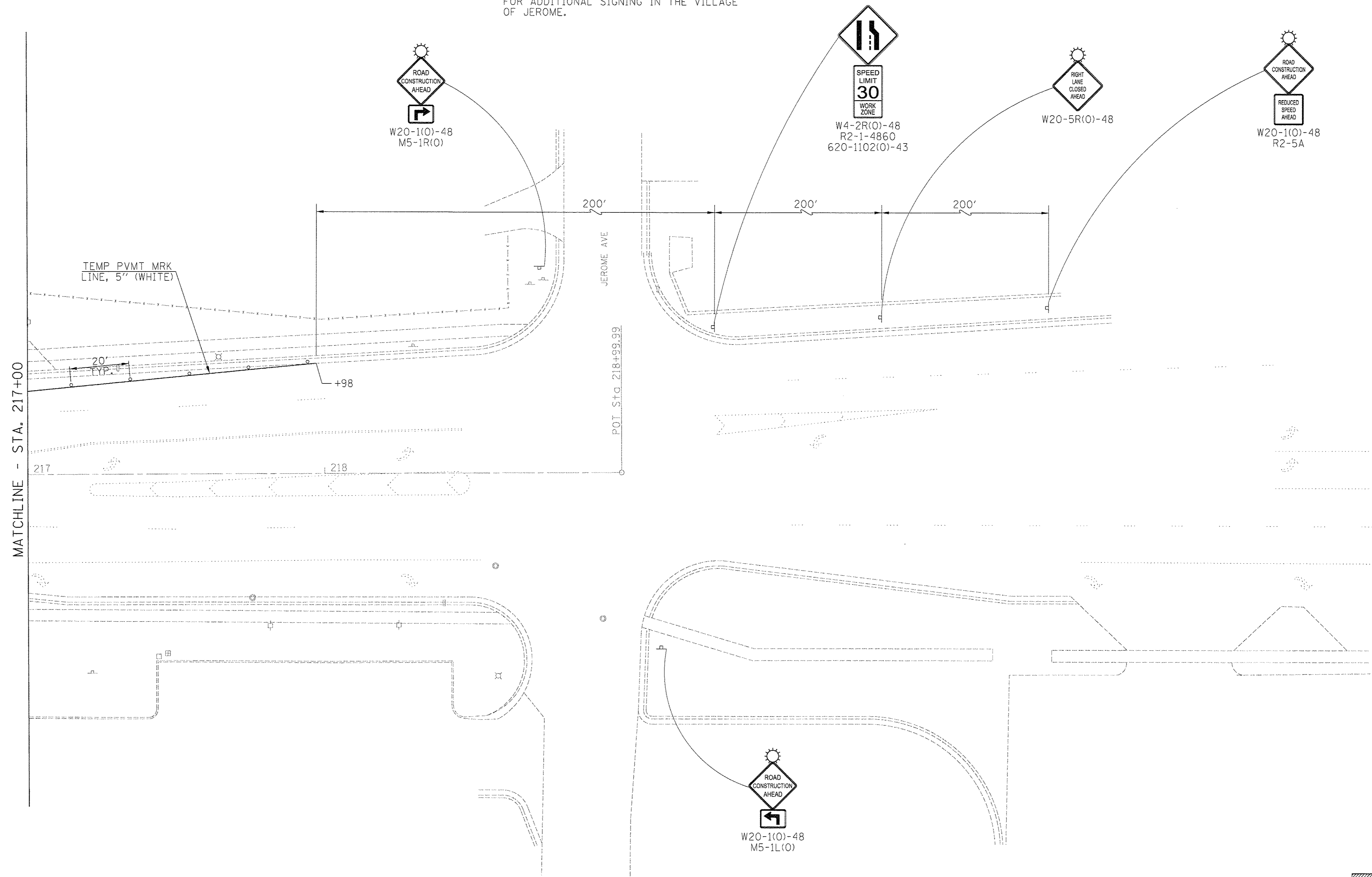
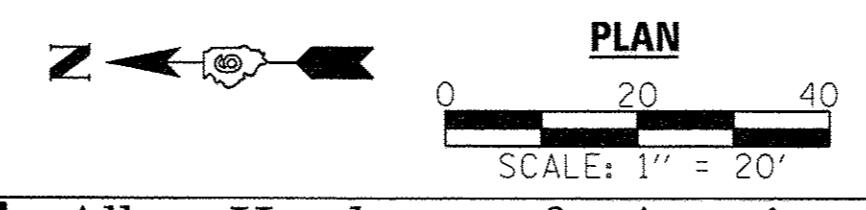


SEE SHEET OF THE SPECIAL PROVISIONS  
FOR ADDITIONAL SIGNING IN THE VILLAGE  
OF JEROME.



**SYMBOLS**

- IMPACT ATTENUATOR
- REMOVAL ITEMS
- TEMPORARY CONCRETE BARRIER
- TRAFFIC SIGN
- TYPE C BIDIRECTIONAL REFLECTOR
- DRUM
- FLEXIBLE DELINEATOR
- RAISED REFLECTIVE PAVEMENT MARKER
- TYPE III BARRICADE
- LIGHTS, TYPE A



FILE NAME = #FILE#	USER NAME = #USER#	DESIGNED -	REVISED -
		DRAWN -	REVISED -
		CHECKED -	REVISED -
		DATE -	REVISED -

**Allen Henderson & Associates, Inc.**  
Civil and Structural Engineers Springfield, IL.  
62703 Phone: (217)544-8033 IL Design Firm  
No. 184-001907

STAGE CONSTRUCTION TRAFFIC DETAILS			
STAGE II			
SCALE: 1" = 20'	SHEET NO. 11 OF 12 SHEETS	STA.	TO STA.

F.A.U. RTE.	SECTION	COUNTY	TOTAL SHEETS	SHEET NO.
8006	10-00470-00-BR	SANGAMON	90	34
FED. ROAD DIST. NO.			ILLINOIS FED. AID PROJECT	

CONTRACT NO. **93600**