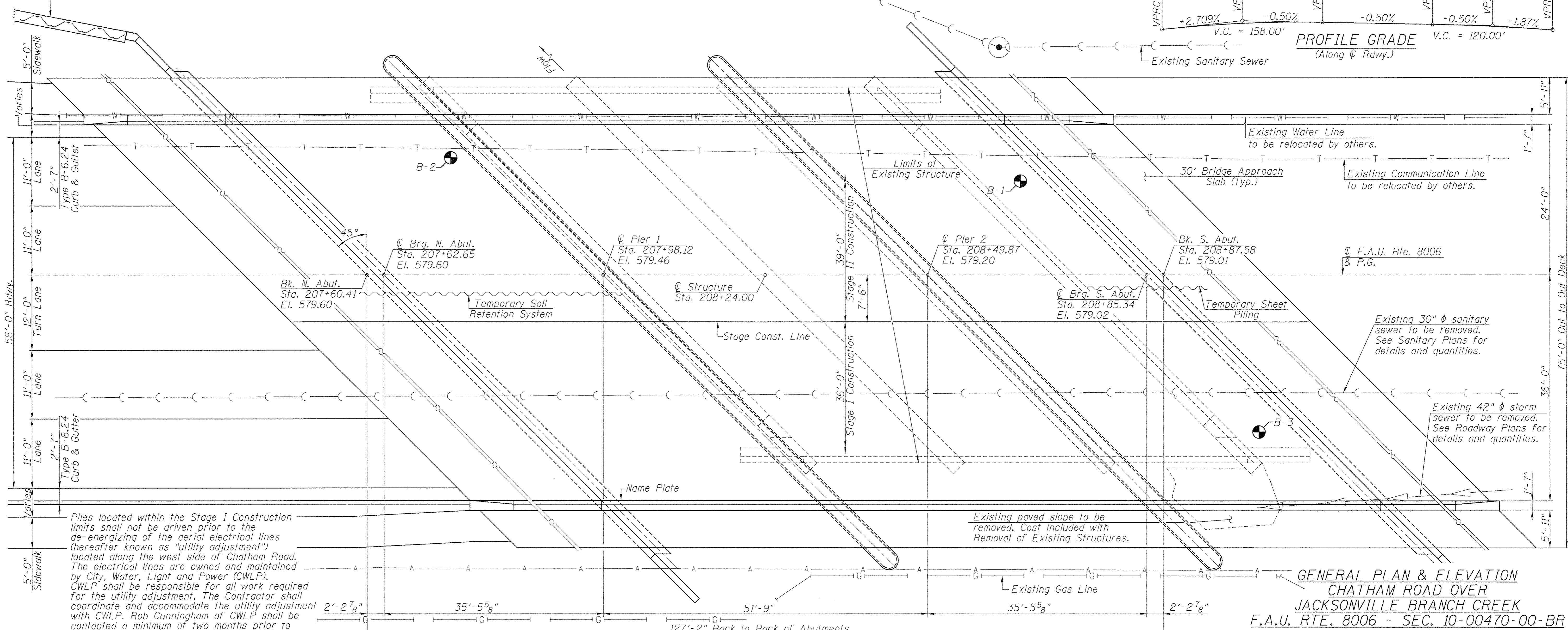
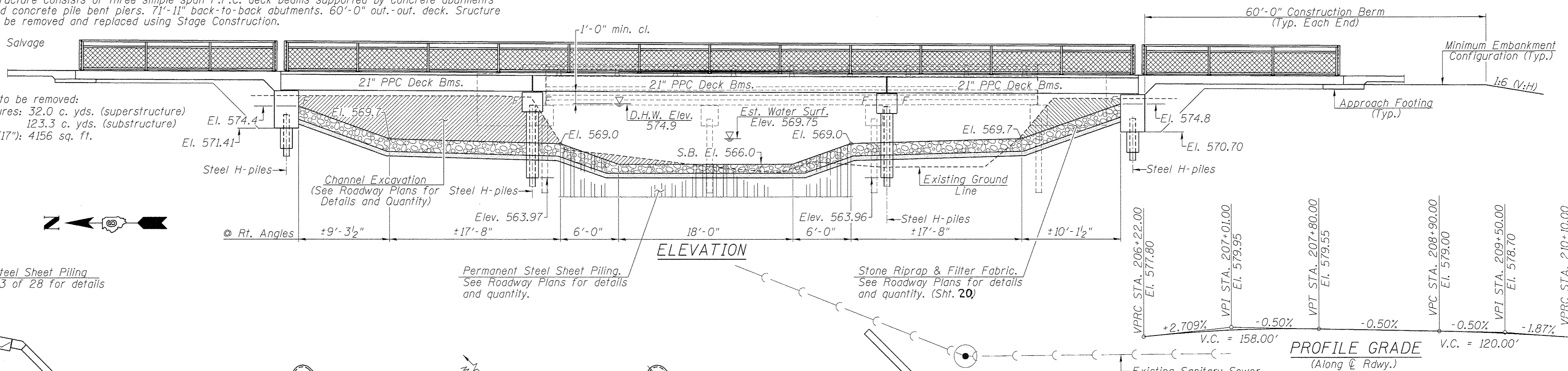


Bench Mark: "M" in Mueller on fire hydrant at N.E. corner of Chatham Rd. and Reed Ave. El. 577.55

Existing Structure: S.N. 084-3041 built in 1967 as F.A.S. Route 1639, Section 101-2 212-2CS at Sta. 208+36. Structure consists of three simple span P.P.C. deck beams supported by concrete abutments and concrete pile bent piers. 71'-11" back-to-back abutments. 60'-0" out.-out. deck. Structure to be removed and replaced using Stage Construction.

No Salvage

Estimated Quantity to be removed:
Concrete Structures: 32.0 c. yds. (superstructure)
123.3 c. yds. (substructure)
PPC Deck Beams (17"): 4156 sq. ft.



Piles located within the Stage I Construction limits shall not be driven prior to the de-energizing of the aerial electrical lines (hereafter known as "utility adjustment") located along the west side of Chatham Road. The electrical lines are owned and maintained by City, Water, Light and Power (CWLP). CWLP shall be responsible for all work required for the utility adjustment. The Contractor shall coordinate and accommodate the utility adjustment with CWLP. Rob Cunningham of CWLP shall be contacted a minimum of two months prior to driving piles at 217-757-8520. All costs associated with the utility adjustment shall not be paid for separately but shall be included in the cost of Driving Piles.

**GENERAL PLAN & ELEVATION
 CHATHAM ROAD OVER
 JACKSONVILLE BRANCH CREEK
 F.A.U. RTE. 8006 - SEC. 10-00470-00-BR
 SANGAMON COUNTY
 STATION 208+24.00
 STRUCTURE NO. 084-6019**

FILE NAME =	USER NAME =	DESIGNED -	REVISOR -	Allen Henderson & Associates, Inc. Civil and Structural Engineers Springfield, IL 62703 Phone: (217)544-8033 IL Design Firm No. 184-001907	GENERAL PLAN & ELEVATION SHEET NO. 1 OF 28 SHEETS		F.A.U. RTE.	SECTION	COUNTY	TOTAL SHEETS	SHEET NO.
	PLOT SCALE =	CHECKED -	REVISOR -				8006	10-00470-00-BR	SANGAMON	90	41
	PLOT DATE =	DRAWN -	REVISOR -				CONTRACT NO. 9.360.0				
		CHECKED -	REVISOR -				ILLINOIS FED. AID PROJECT				