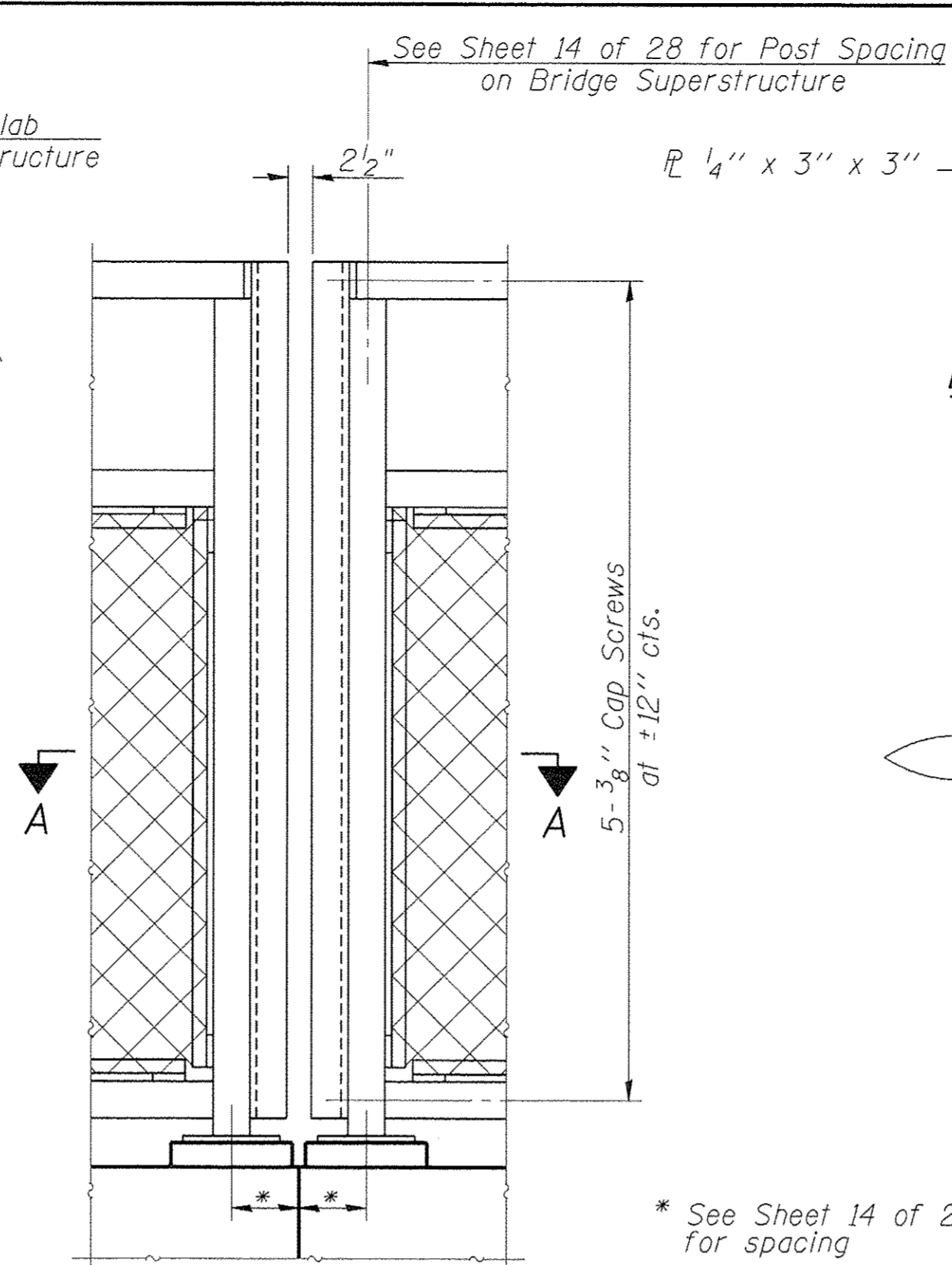
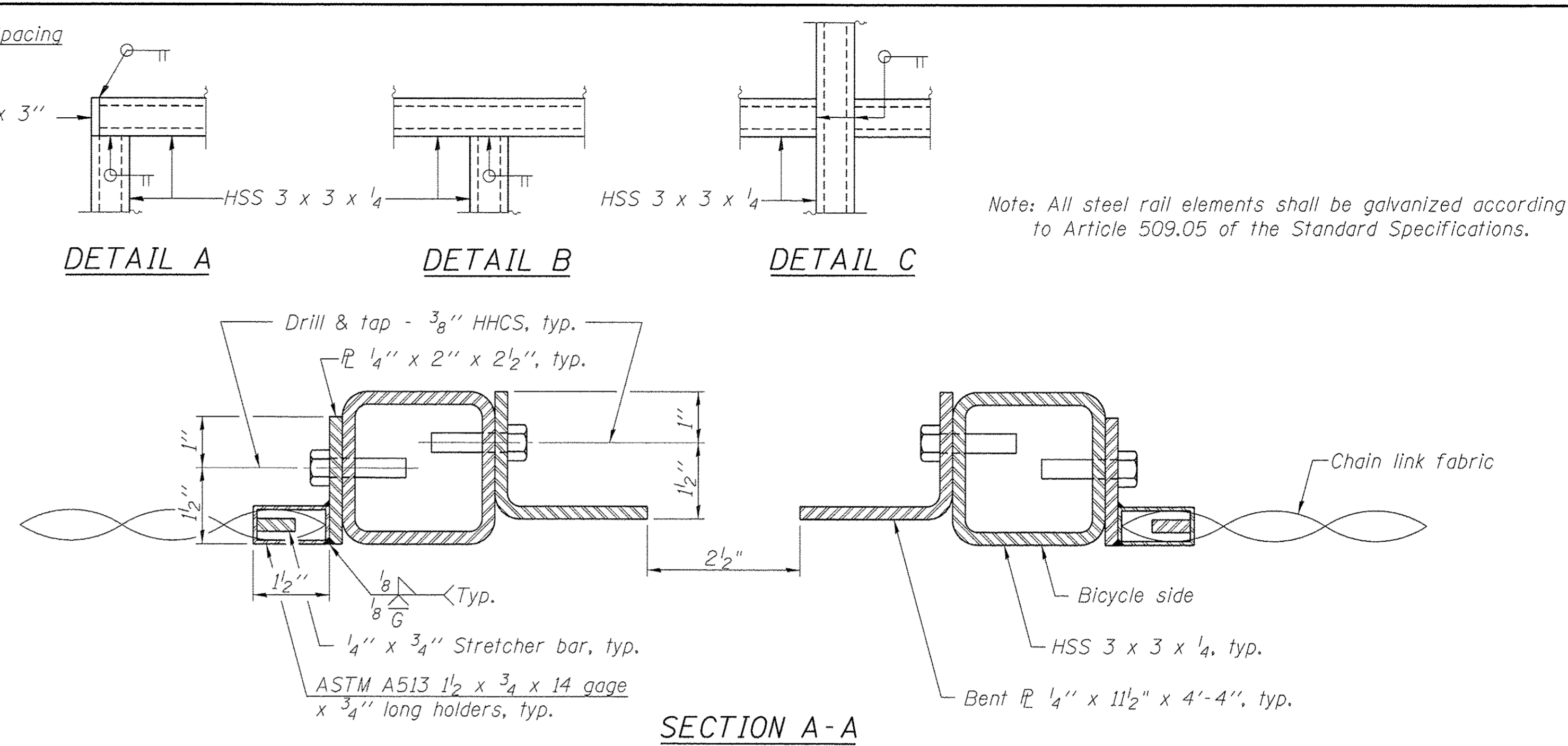


**BICYCLE RAILING**

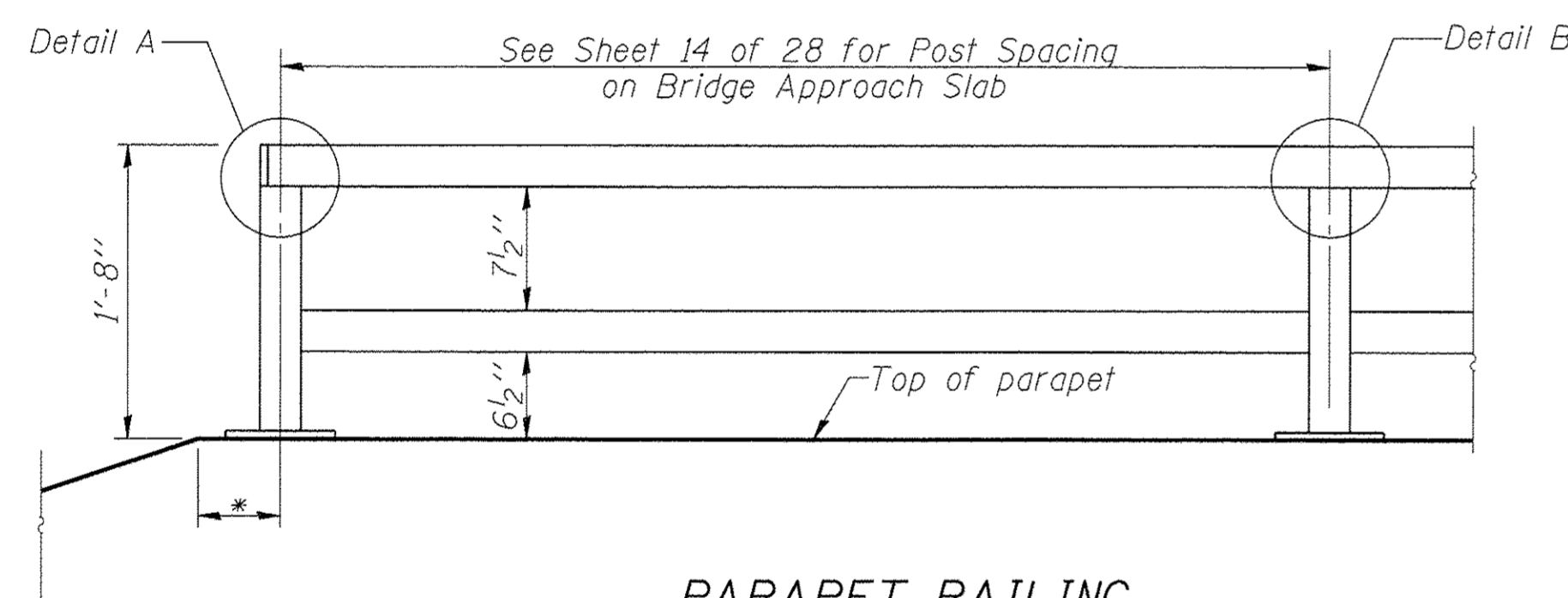


**BICYCLE RAILING**

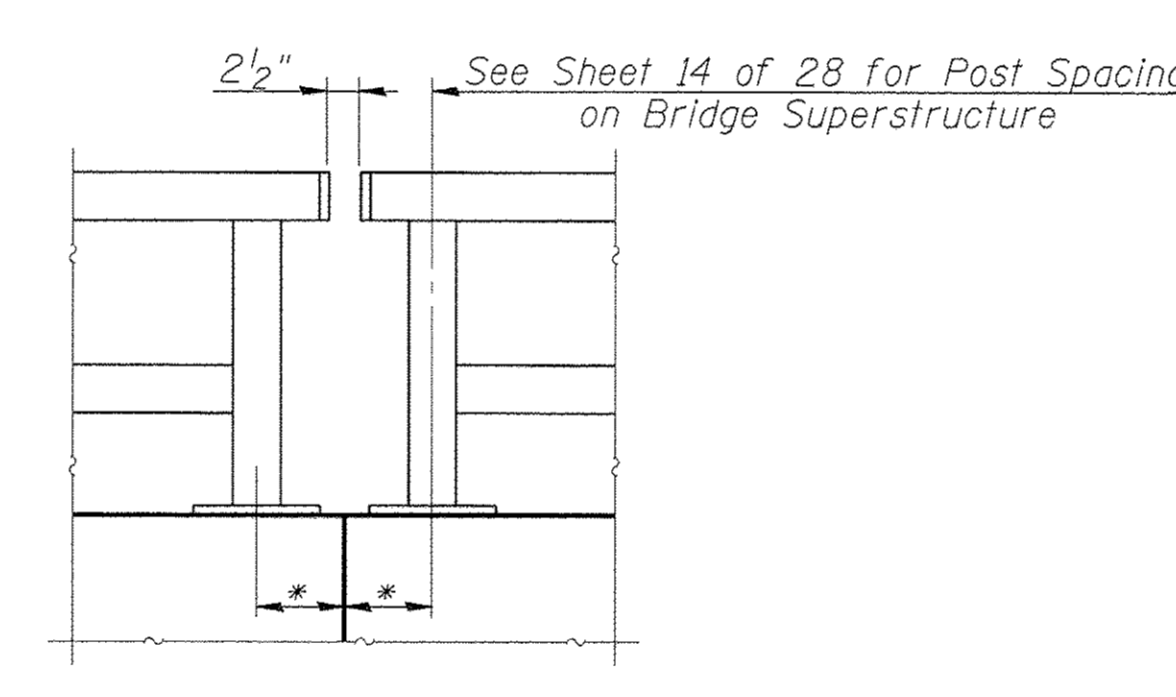


Note: All steel rail elements shall be galvanized according to Article 509.05 of the Standard Specifications.

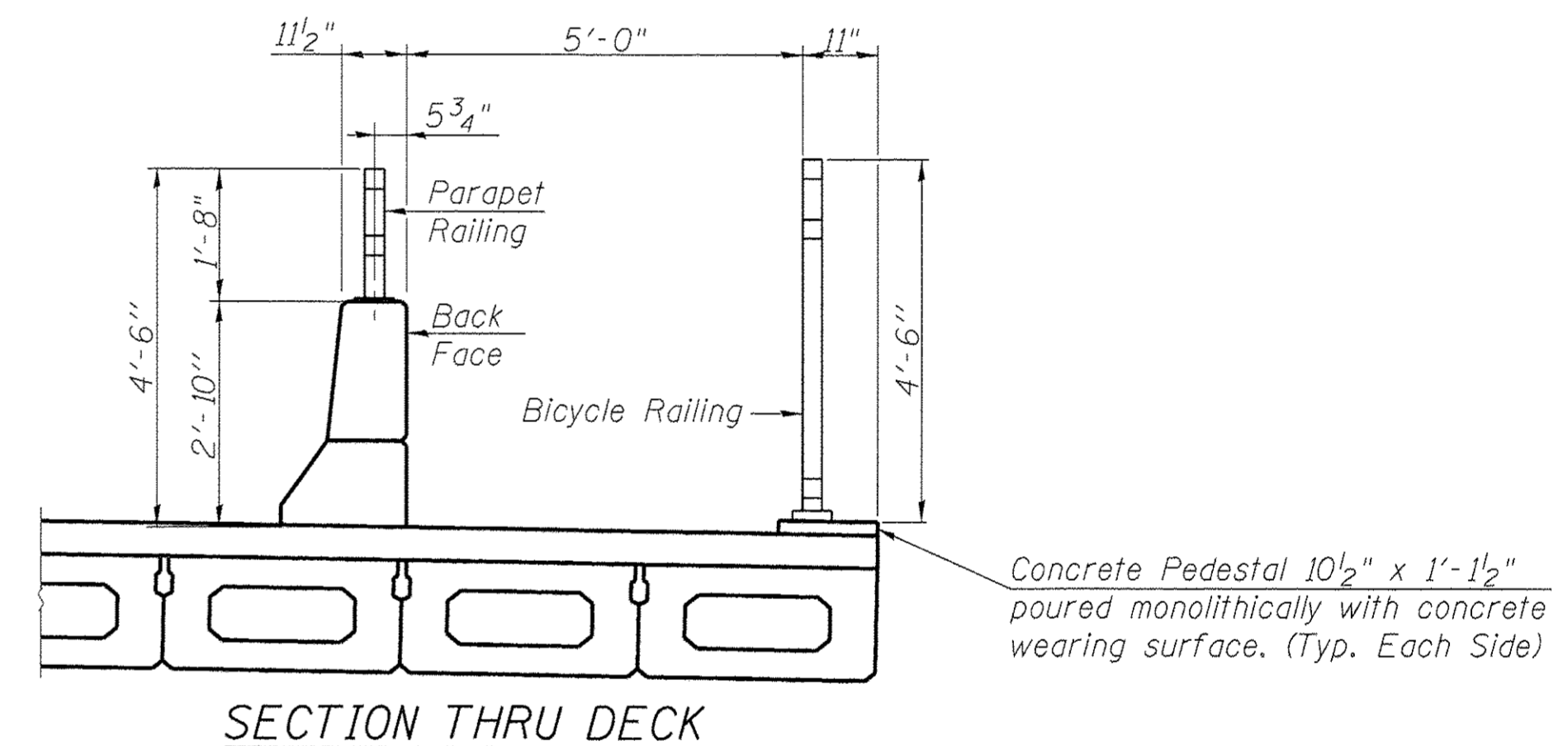
**SECTION A-A**



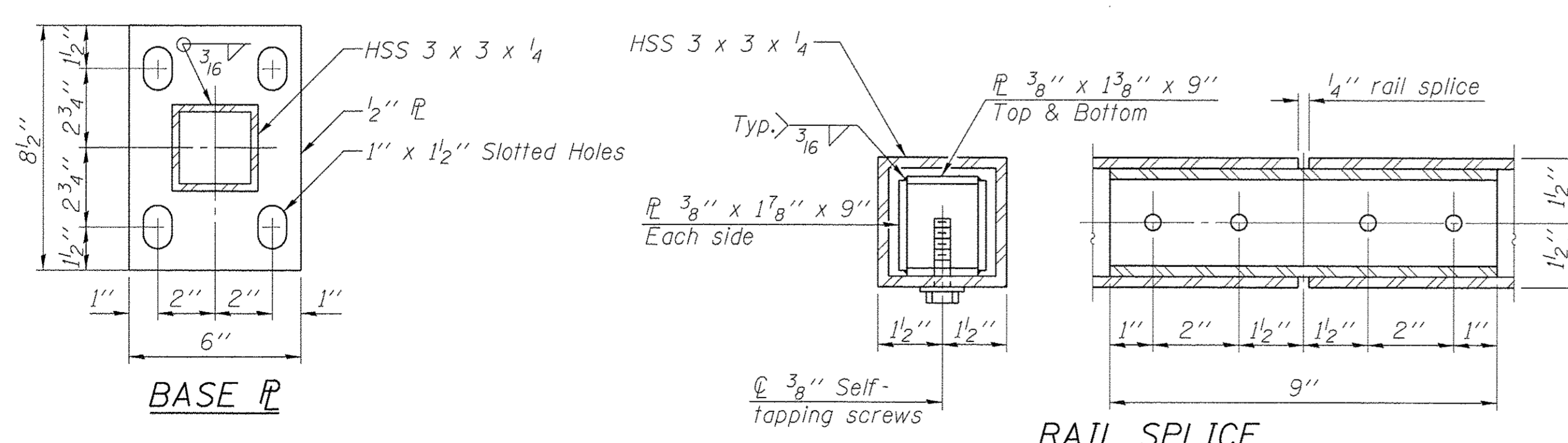
**PARAPET RAILING ELEVATION**



**PARAPET RAILING**

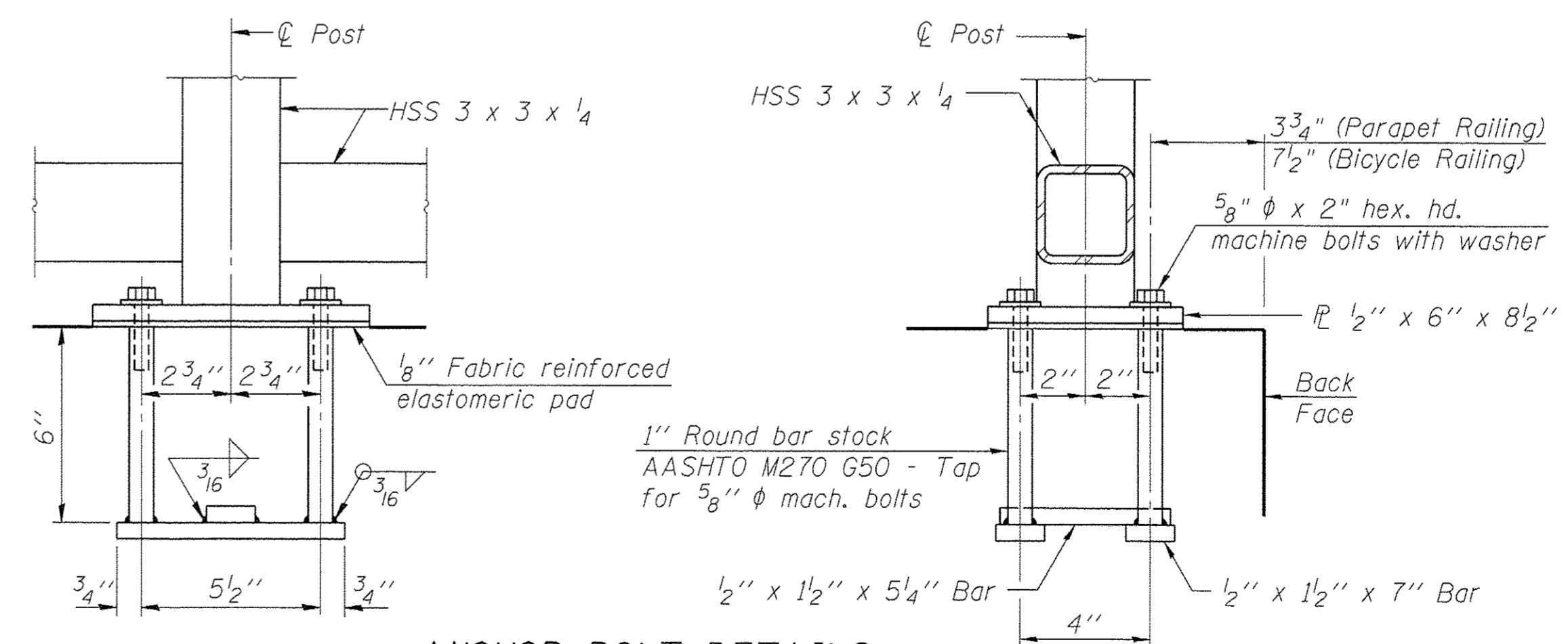


**SECTION THRU DECK**



**BASE PLATE**

**RAIL SPLICE**



**ANCHOR BOLT DETAILS**

In lieu of the cast-in-place anchor device shown, the Contractor has the option of drilling and setting 5/8 inch diameter anchor rods according to Article 509.06 of the Standard Specifications. Embedment shall be according to the manufacturer's specifications.

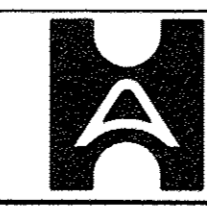
**BILL OF MATERIAL**

Item	Unit	Quantity
Bicycle Railing	Foot	369
Parapet Railing	Foot	344

R-29

11-1-09 (10'-0" Maximum Post Spacing)

FILE NAME =	USER NAME =	DESIGNED -	REVISED -
		CHECKED -	REVISED -
		DRAWN -	REVISED -
		CHECKED -	REVISED -



**Allen Henderson & Associates, Inc.**  
Civil and Structural Engineers Springfield, IL.  
62703 Phone: (217)544-8033 IL Design Firm  
No. 184-001907

**BICYCLE RAILING**  
**STRUCTURE NO. 084-6019**

SHEET NO. 13 OF 28 SHEETS

F.A.U. RTE.	SECTION	COUNTY	TOTAL SHEETS	SHEET NO.
8006	10-00470-00-BR	SANGAMON	90	53
			CONTRACT NO. 93600	
ILLINOIS FED. AID PROJECT				