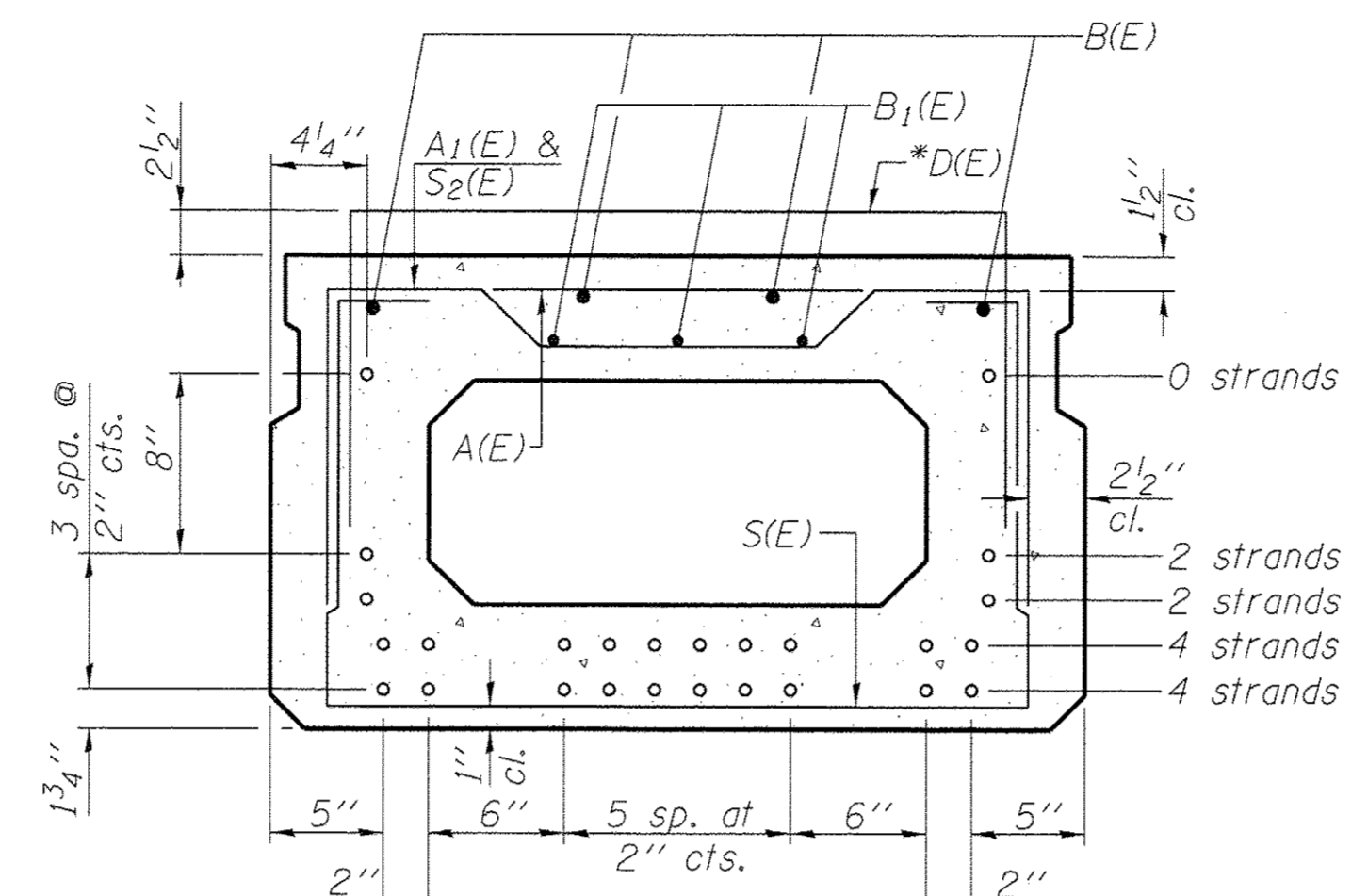


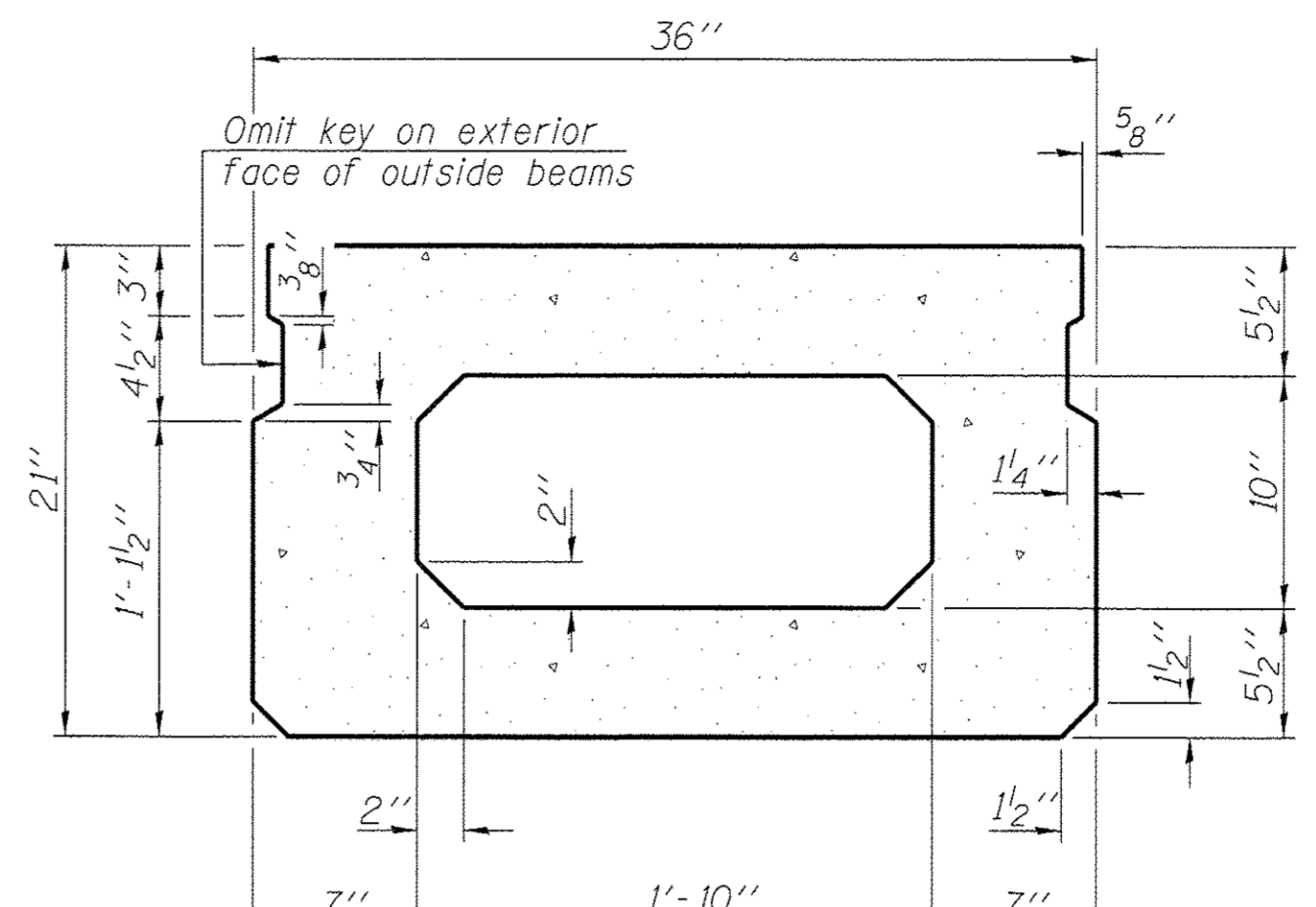
SECTION A-A



SECTION B-B

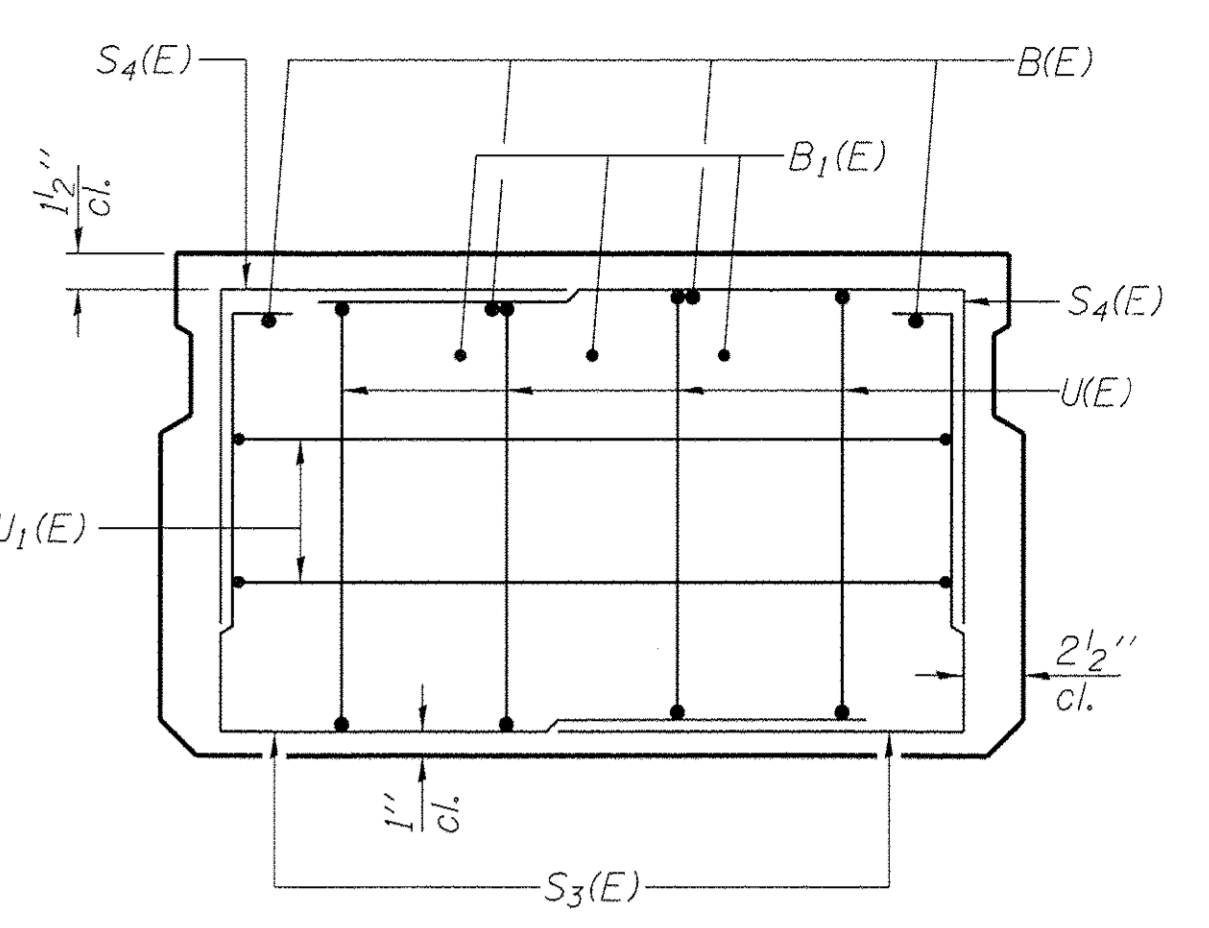
(Showing reinforcement and permissible strand locations)

Note: Place the number of strands specified in each row symmetrically about the centerline of beam in the permissible strand locations shown.



SECTION B-B

(Showing dimensions)



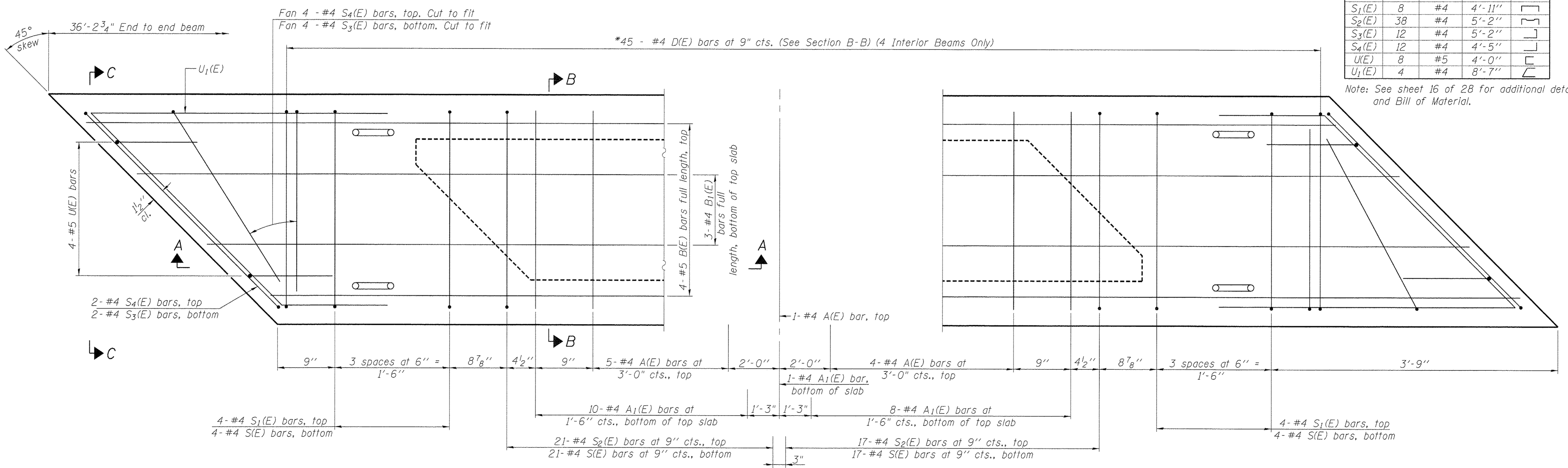
VIEW C-C

BAR LIST
ONE BEAM ONLY
(For information only)

Bar	No.	Size	Length	Shape
A(E)	10	#4	2'-7"	—
A1(E)	19	#4	2'-10"	~
B(E)	4	#5	35'-10"	—
B1(E)	3	#4	35'-10"	—
D(E)	45	#4	4'-7"	⊏
S(E)	46	#4	6'-5"	⊏
S1(E)	8	#4	4'-11"	⊏
S2(E)	38	#4	5'-2"	⊏
S3(E)	12	#4	5'-2"	⊏
S4(E)	12	#4	4'-5"	⊏
U(E)	8	#5	4'-0"	⊏
U1(E)	4	#4	8'-7"	⊏

Note: See sheet 16 of 28 for additional details and Bill of Material.

* For dimensions of D(E) bar See Sheet 9 of 28.



PLAN VIEW

MINIMUM BAR LAP

#4 bar = 2'-0"
#5 bar = 2'-6"

Note: Spacing of S(E) and S2(E) bars may be adjusted up to 4" in the immediate area of the transverse tie diaphragms to miss the block outs for the transverse ties.

PD-2136-R

7-1-10

FILE NAME =	USER NAME =	DESIGNED -	REVISED -
		CHECKED -	REVISED -
PLOT SCALE =	DRAWN -	REVISOR -	
PLOT DATE =	CHECKED -	REVISED -	



Allen Henderson & Associates, Inc.
Civil and Structural Engineers Springfield, IL.
62703 Phone: (217)544-8033 IL Design Firm
No. 184-001907

21" X 36" PPC DECK BEAM (SPANS 1 & 3)
STRUCTURE NO. 084-6019

SHEET NO. 15 OF 28 SHEETS

F.A.U. RTE.	SECTION	COUNTY	TOTAL SHEETS	SHEET NO.
8006	10-00470-00-BR	SANGAMON	90	55
			CONTRACT NO. 93600	
[ILLINOIS] FED. AID PROJECT				