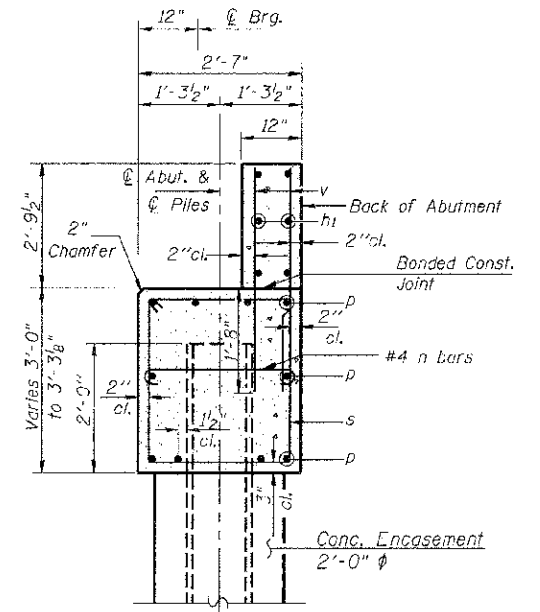
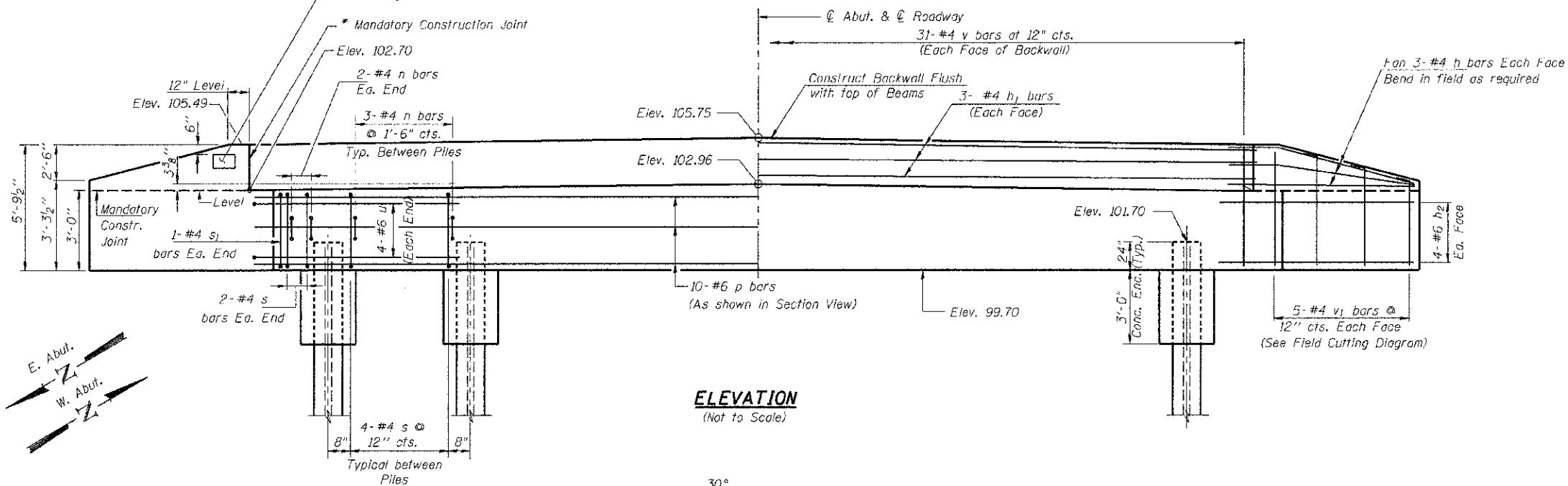


* Cast top of wingwall flush with exterior beam face after beams have been erected.

Name Plate shall be placed on the outside face of the South Wing, West Abutment.

NOTE: After beams are in place and dowel rods grouted, the backwall and the portions of the wingwall above the bonded construction joint shall be poured.

Note: All edges shall have standard $\frac{3}{4}$ " chamfer unless noted otherwise.



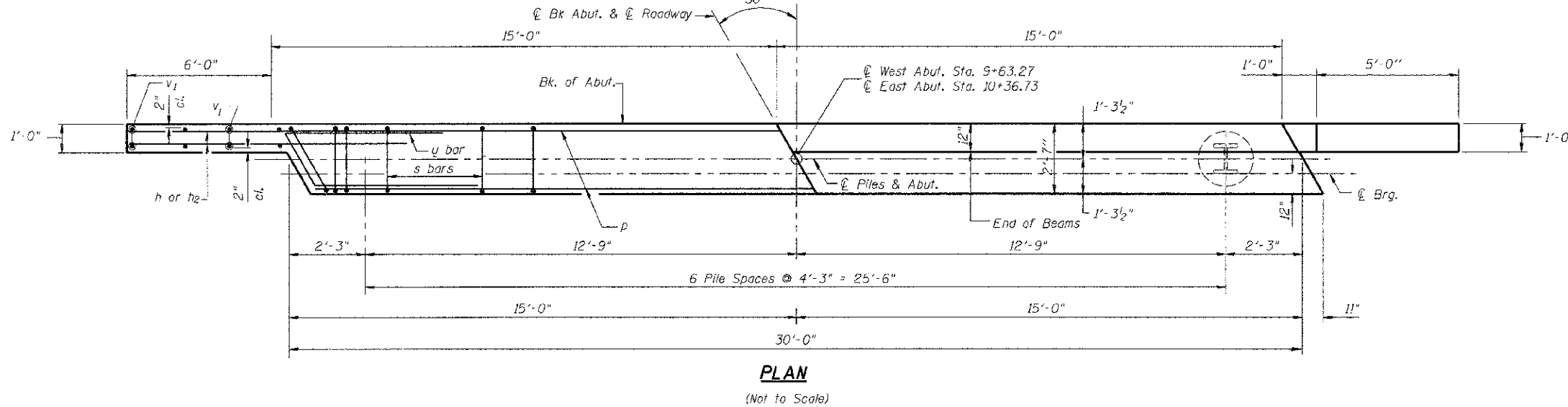
SECTION THRU ABUTMENT
(At Right L's)

BILL OF MATERIAL
TWO ABUTMENTS

| BAR | NO. | SIZE | LENGTH | SHAPE |
|--------------------------------|-----|------|---------|-------|
| h | 24 | #4 | 8'-9" | — |
| h ₁ | 12 | #4 | 29'-8" | — |
| h ₂ | 32 | #6 | 10'-3" | — |
| n | 44 | #4 | 3'-3" | C |
| p | 20 | #6 | 29'-8" | — |
| s | 56 | #4 | 10'-5" | □ |
| s ₁ | 4 | #4 | 11'-1" | □ |
| u | 16 | #6 | 11'-6" | L |
| v | 124 | #4 | 4'-3" | — |
| v ₁ | 20 | #4 | 7'-11" | — |
| Concrete Structures | | | Cu. Yd. | 28.5 |
| Reinforcement Bars | | | Pound | 3,010 |
| Furnishing Steel Piles HP12x53 | | | Foot | 585 |
| Driving Piles | | | Foot | 585 |
| Concrete Encasement | | | Cu. Yd. | 4.9 |
| Test Piles, Steel HP 12x53 | | | Each | 1 |
| Concrete Sealer | | | Sq. Ft. | 351 |

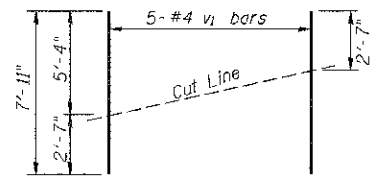
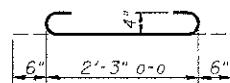
Note:

Apply Concrete Sealer to the front face and top surfaces of wingwalls; front face and beam seal surfaces of abutment caps.

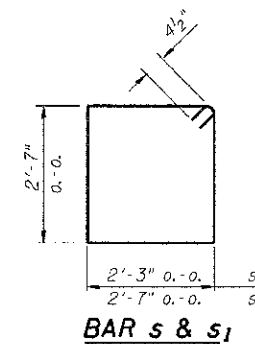
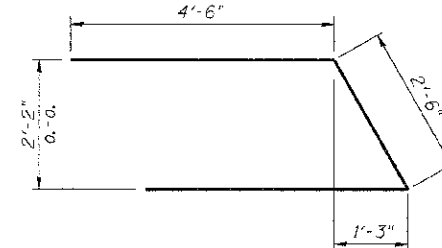


PILE DATA (2-ABUTS.)

Type: Steel HP12X53
Nominal Required Bearing: 225 kips
Allowable Resistance Available: 85 kips
Estimated Length: 45 Feet
No. Production Piles: 13
No. Test Piles: 1 (W. Abut.)



Order v₁ full length. Cut as shown and use remainder of bars in opposite face



| | | |
|--------------|------------|-----------|
| USER NAME = | DESIGNED - | REVISED - |
| PLOT SCALE = | CHECKED - | REVISED - |
| PLOT DATE = | DRAWN - | REVISED - |
| | CHECKED - | REVISED - |

STATE OF ILLINOIS
DEPARTMENT OF TRANSPORTATION

ABUTMENTS
SN 011-3408

Sheet No. 2 of 8 sheets.

| T.R. | SECTION | COUNTY | TOTAL SHEETS | SHEET NO. |
|---------------------------|----------------|-----------|--------------|--------------------|
| 57 | 06-03111-00-BR | CHRISTIAN | 17 | 5 |
| | | | | CONTRACT NO. 93601 |
| ILLINOIS FED. AID PROJECT | | | | |