

RTF.	SECTION	COUNTY	TOTAL SHEETS	SHEET NO.
TR217	07-01125-00-BR	SHELBY	15	1
FED. ROAD DIST. NO.	ILLINOIS	CONTRACT NO. 95655		

STATE OF ILLINOIS  
DEPARTMENT OF TRANSPORTATION  
DIVISION OF HIGHWAYS

# PLANS FOR PROPOSED STP BRIDGE

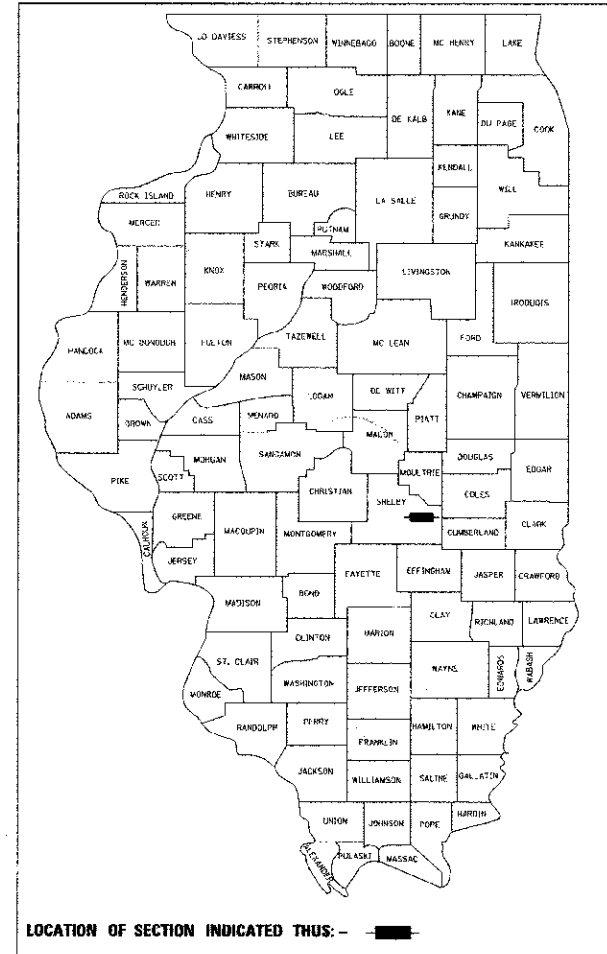
## SECTION 07-01125-00-BR ASH GROVE TOWNSHIP TR 217 SHELBY COUNTY

### INDEX OF SHEETS

- 1 COVER SHEET
- 2 SUMMARY OF QUANTITIES
- 3 PLAN AND PROFILE
- 4 BRIDGE PLAN AND ELEVATION
- 5-6 DECK BEAM DETAILS
- 7 TYPE S-1 STEEL RAILING
- 8 ABUTMENT DETAILS
- 9 PIER DETAILS
- 10 PILING SPlice DETAILS
- 11 EROSION CONTROL PLAN
- 12-15 CROSS SECTIONS

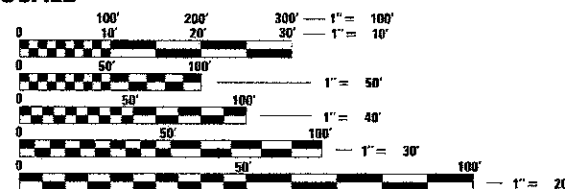
### HIGHWAY STANDARDS

- 000001-06 STANDARD SYMBOLS, ABBREVIATIONS AND PATTERNS
- 280001-07 TEMPORARY EROSION CONTROL SYSTEMS
- 515001-03 NAME PLATES FOR BRIDGES
- 635006-03 REFLECTOR AND TERMINAL MARKER PLACEMENT
- 701901-02 TRAFFIC CONTROL DEVICES
- BLR 21-9 TYPICAL APPLICATION OF TRAFFIC CONTROL DEVICES FOR CONSTRUCTION ON RURAL LOCAL HIGHWAYS



ADT-CURRENT 100 DESIGN ADT 125  
CLASS-RURAL LOCAL ROAD  
DESIGN SPEED-30 MPH  
DESIGN YEAR 2033

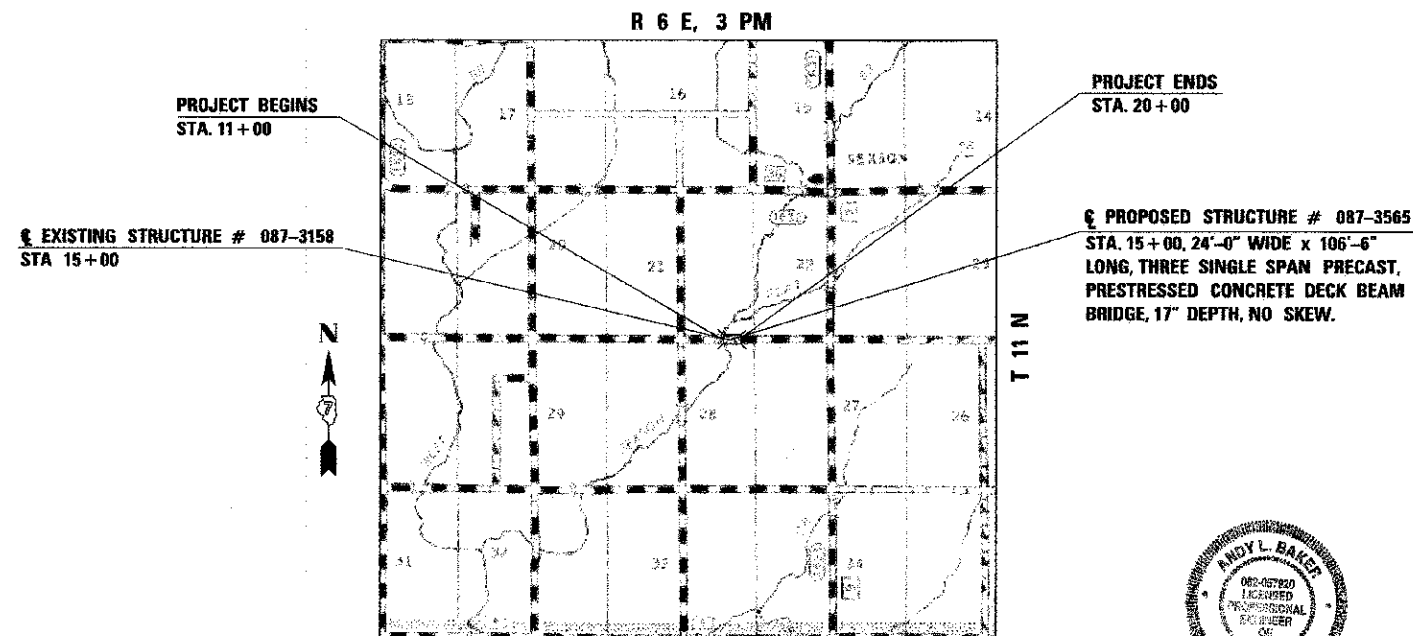
### SCALE



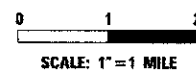
FULL SIZE PLANS HAVE BEEN PREPARED USING STANDARD ENGINEERING SCALES. REDUCED SIZED PLANS WILL NOT CONFORM TO STANDARD SCALES. IN MAKING MEASUREMENTS ON REDUCED PLANS, THE ABOVE SCALES MAY BE USED.

J.U.L.I.E.  
JOINT UTILITY LOCATION INFORMATION FOR EXCAVATION  
1-800-892-0123  
OR 811

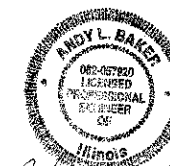
CONTRACT NO. 95655



### LOCATION MAP



TOTAL AND NET LENGTH OF PROJECT = 900 FT. = 0.17 MI.



Andy L. Baker, P.E.  
LICENSE EXP. DATE 11-30-13

APPROVED	4-2	20 13	 COUNTY ENGINEER
APPROVED	4-2	20 13	 HIGHWAY COMMISSIONER
PASSED	4-15	20 13	 DISTRICT SEVEN ENGINEER OF LOCAL ROADS AND STREETS
RELEASING FOR BID BASED ON LIMITED REVIEW	4/15	20 13	 DEPUTY DIRECTOR OF HIGHWAYS REGION FOUR ENGINEER STATE OF ILLINOIS DEPARTMENT OF TRANSPORTATION