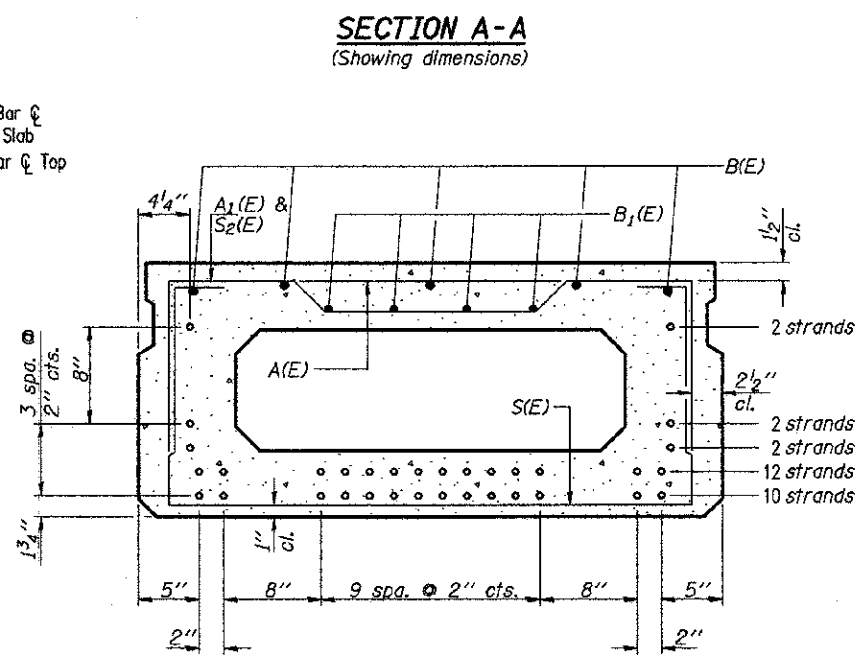
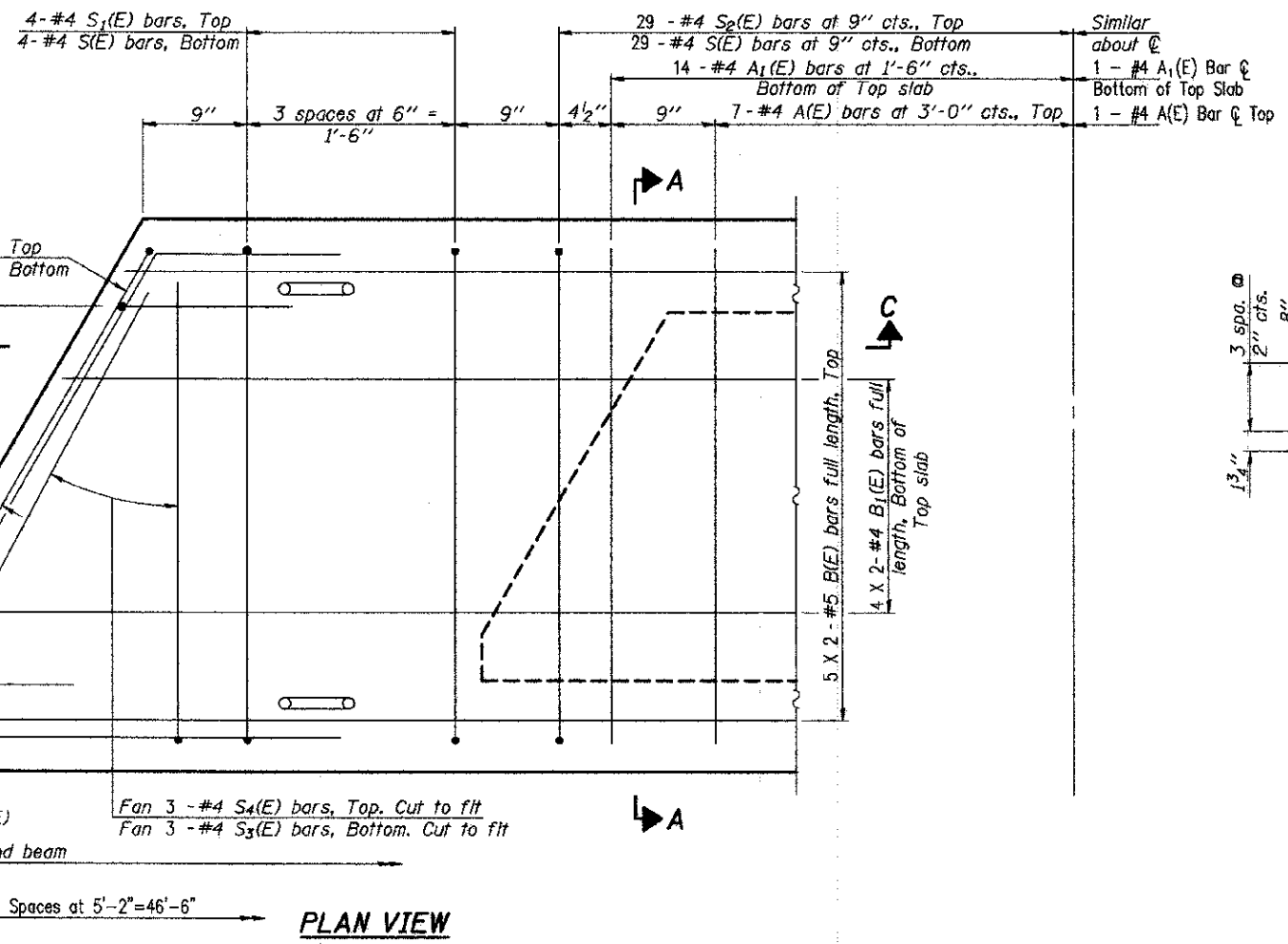
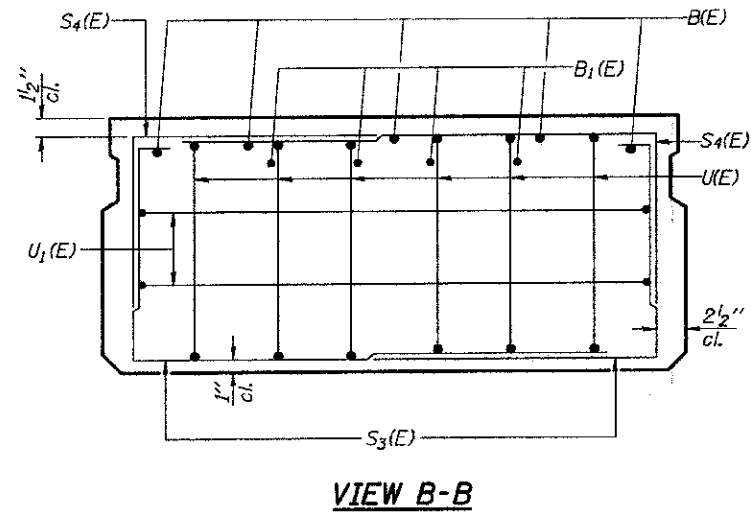
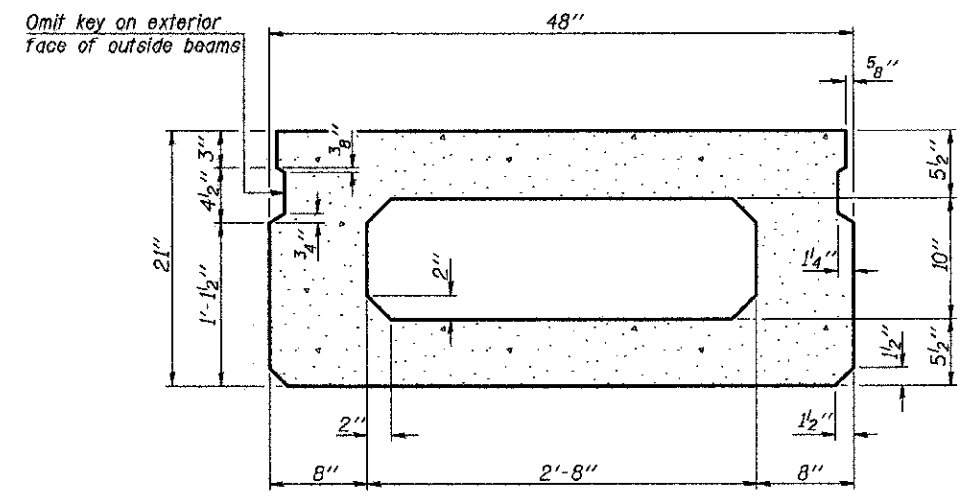
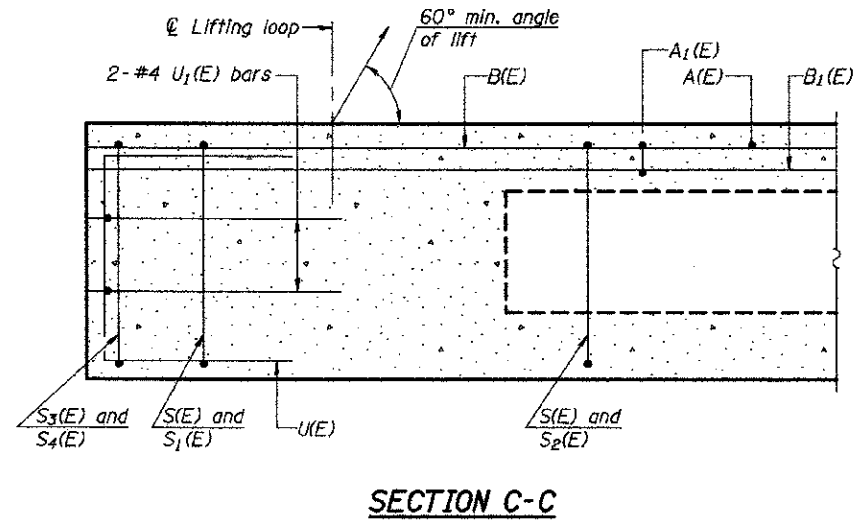


ROUTE	SECTION	COUNTY	TOTAL SHEETS	SHEET NO.
T.R. 87	11-09113-00-BR	LAWRENCE	15	6
CONTRACT NO. 95693		ILLINOIS	PROJECT BROS-010(048)	



- Notes:
- 28 Total Strands
 - Place the number of strands specified in each row symmetrically about the centerline of beam in the permissible strand locations shown.

BAR LIST
ONE BEAM ONLY
(For information only)

Bar	No.	Size	Length	Shape
A(E)	15	#4	3'-7"	—
A1(E)	29	#4	3'-10"	—
B1(E)	10	#5	26'-0"	—
B1(E)	8	#4	26'-0"	—
S(E)	66	#4	7'-5"	—
S1(E)	8	#4	5'-11"	—
S2(E)	58	#4	6'-2"	—
S3(E)	10	#4	5'-7"	—
S4(E)	10	#4	4'-10"	—
U(E)	12	#5	4'-0"	—
U1(E)	4	#4	7'-2"	—

Note: See sheet 7 of 15 for additional details and Bill of Material.

MINIMUM BAR LAP
#4 bar = 2'-0"
#5 bar = 2'-6"

Note: Spacing of S(E) and S2(E) bars may be adjusted up to 4" in the immediate area of the transverse tie diaphragms to miss the block outs for the transverse ties.

Bars indicated thus 5 X 2-#5 etc. indicates 5 lines of bars with 2 lengths per line.

21" X 48" PPC DECK BEAM

CHARLESTON ENGINEERING, INC.
CONSULTING ENGINEERS
105 NORTH KITCHELL
P.O. BOX 387
OLNEY, ILLINOIS 62450
(618) 392-0726
ILLINOIS DEPARTMENT OF PROFESSIONAL REGULATION REGISTRATION #154.008513

SUPERSTRUCTURE
STRUCTURE NO. 051-3300
T.R. 87
OVER ALLISON DITCH #1
SECTION 11-09113-00-BR
LAWRENCE COUNTY
STATION 4+00.00