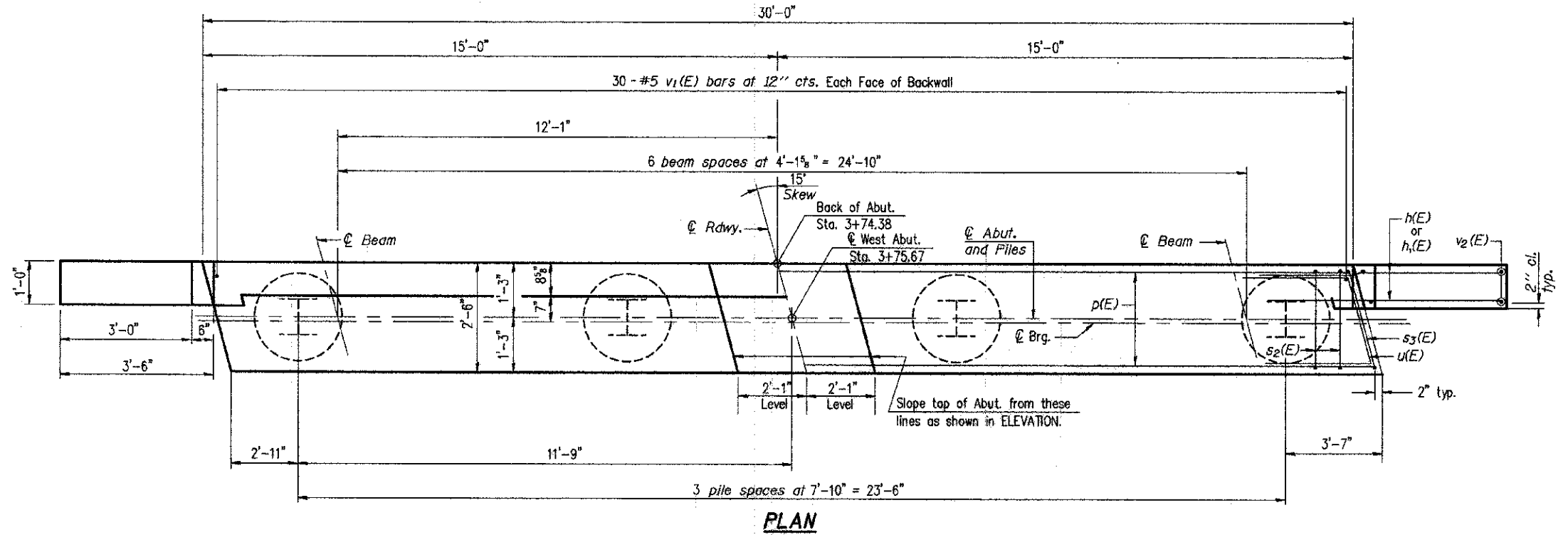
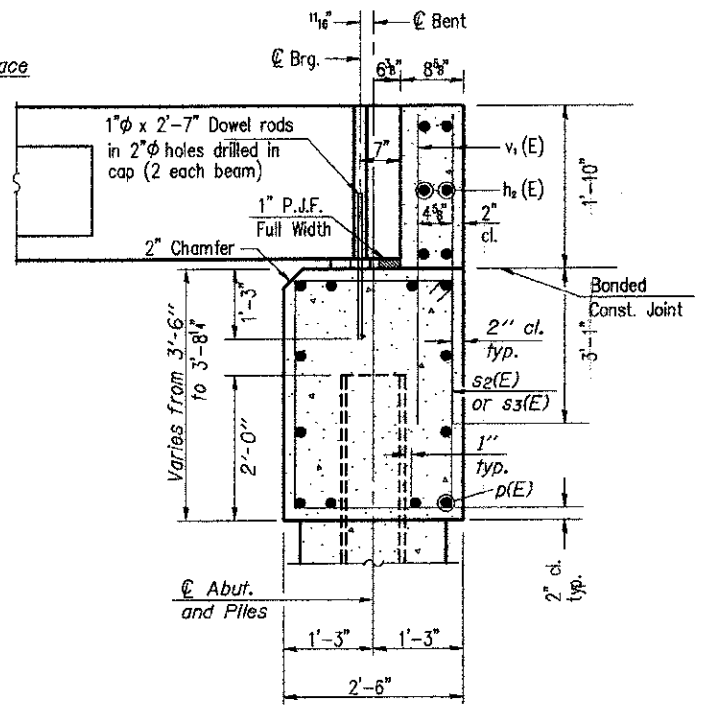
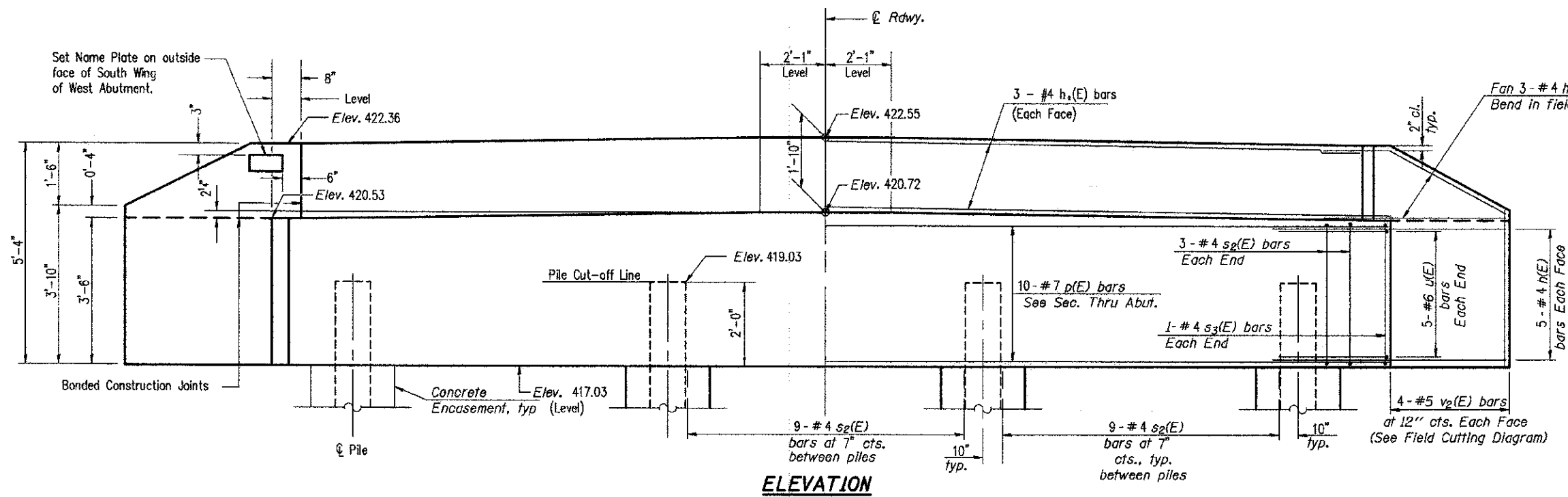


ROUTE	SECTION	COUNTY	TOTAL SHEETS	SHEET NO.
T.R. 87	11-09113-00-BR	LAWRENCE	15	9
CONTRACT NO. 95693		ILLINOIS	PROJECT BROS-0101(045)	



SEC. THRU ABUT.
(At Right Angles)

BILL OF MATERIAL

Bar	No.	Size	Length	Shape
h1(E)	20	#4	5'-0"	—
h2(E)	12	#4	5'-3"	—
h3(E)	6	#4	29'-8"	—
p(E)	12	#7	29'-8"	—
s2(E)	33	#4	11'-5"	□
s3(E)	2	#4	11'-7"	□
u(E)	10	#6	11'-3"	┌
v1(E)	60	#5	4'-11"	—
v2(E)	8	#5	8'-4"	—
Concrete Structures			Cu. Yd.	12.8
Reinforcement Bars, Epoxy Coated			Pound	1773
Furnishing Steel Piles HP 10 X 42			Foot	48
Setting Piles in Rock			Each	4
Concrete Encasement			Cu. Yd.	1.4

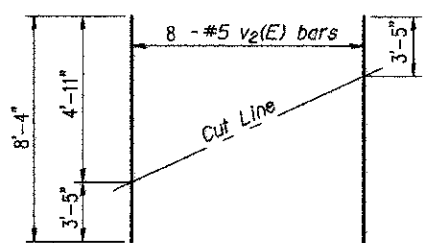
For details of piles and Concrete Encasement, see sheet 11 of 15.

CHARLESTON ENGINEERING, INC.
CONSULTING ENGINEERS
105 NORTH KITCHELL
P.O. BOX 297
OLNEY, ILLINOIS 62450
(618) 352-0738
ILLINOIS DEPARTMENT OF PROFESSIONAL REGULATION REGISTRATION #194.003513

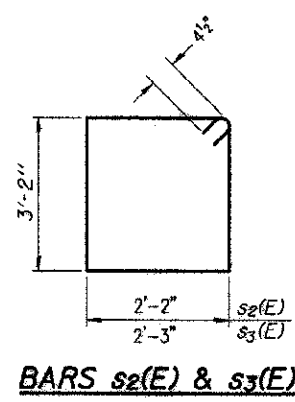
WEST ABUTMENT DETAILS
STRUCTURE NO. 051-3300
T.R. 87
OVER ALLISON DITCH #1
SECTION 11-09113-00-BR
LAWRENCE COUNTY
STATION 4+00.00

PILE DATA

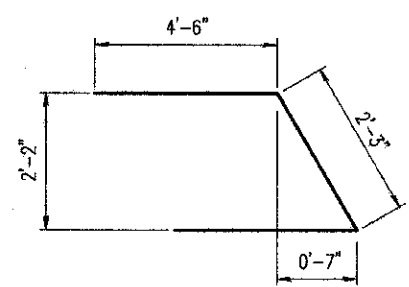
Type: HP 10 X 42
Nominal Required Bearing: 331 kips
Factored Resistance Available: 182 kips
Est. Length: 12 Feet
No. Production Piles: 4



FIELD CUTTING DIAGRAM
Order v2(E) full length. Cut as shown and use remainder of bars in opposite face.



BARS s2(E) & s3(E)



BAR u(E)

Note: 1. The Backwall and the portion of the Wingwalls above the bonded construction joint shall be cast against the in-place beam.