

PLAN VIEW **NOTES**

Prestressing steel shall be uncoated high strength, low relaxation 7-wire strand, Grade 270. The nominal diameter shall be $\frac{1}{2}$ " and the nominal cross-sectional area shall be 0.153 sq. in. The 1" ϕ rods in the transverse tie assembly shall be tightened to a snug fit and the threads set. Pockets on exterior faces of bridge shall be filled with grout after transverse tie assembly is in place.

Reinforcement bars shall conform to ASTM A 706, Grade 60. (See Special Provisions).

Two $\frac{1}{8}$ " fabric adjusting shims of the dimensions of the exterior bearing pad shall be provided for each bearing pad location.

A minimum 2 $\frac{1}{2}$ " ϕ lifting pin shall be used to engage the lifting loops during handling.

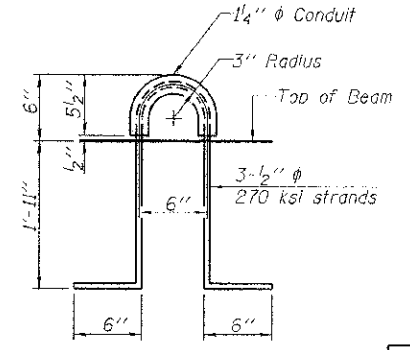
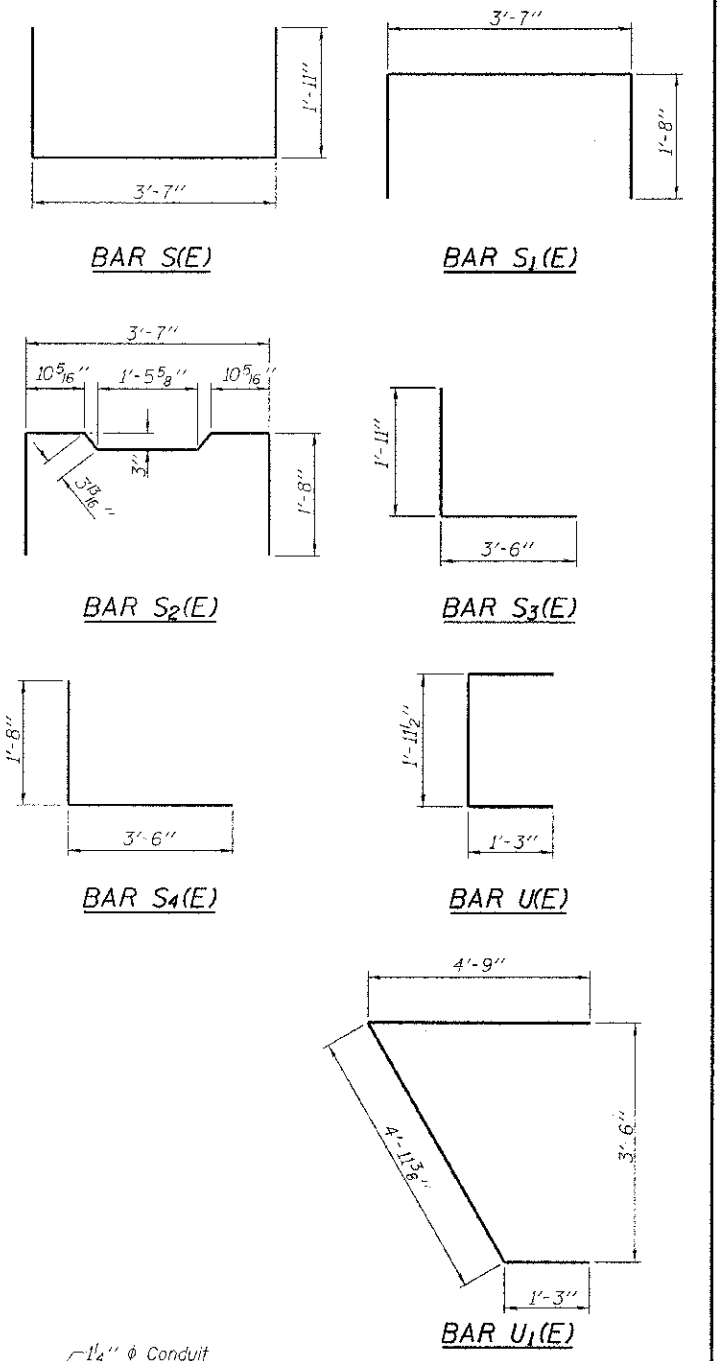
Corrosion Inhibitor, per Article 1020.05(b)(12) and 1021.07 of the Standard Specifications, shall be used in the concrete for precast prestressed concrete deck beams.

Compressive strength of prestressed concrete, f'c, shall be 6000 psi.

Compressive strength of prestressed concrete at release, f'ci, shall be 5000 psi.

All reinforcement shall be epoxy coated.

Note: Connect beams in pairs with the transverse tie configuration shown.



LIFTING LOOP DETAIL

BILL OF MATERIAL

Precast Prestressed Conc. Deck Bms. (27" depth)	Sq. Ft.	1,440
---	---------	-------

PD-2748-RD 7-1-10

FILE NAME = 118234-sht-bridge.dgn	USER NAME =	DESIGNED - D.W.T.	REVISED -
HAMPTON, LENZINI AND RENWICK, INC.		CHECKED - S.W.M.	REVISED -
3435 STEVENSON DRIVE, SUITE 301		DRAWN - D.A.B.	REVISED -
SPRINGFIELD, ILLINOIS 62703	PLOT SCALE =	CHECKED - S.W.M.	REVISED -
ILLINOIS PROFESSIONAL DESIGN FIRM	PLOT DATE = 11/6/2012		
12/14/88 (02/01) 104 (02/01)			

STATE OF ILLINOIS
WAYNE COUNTY HIGHWAY DEPARTMENT

27" x 48" PPC DECK BEAM DETAILS
STRUCTURE NO. 096-3457
SHEET NO. 3 OF 9 SHEETS

T.R.	SECTION	COUNTY	TOTAL SHEETS	SHEET NO.
493	06-15142-09-BR	WAYNE	13	7
LEECH ROAD DISTRICT			CONTRACT NO. 95695	
[ILLINOIS] FED. AID PROJECT				