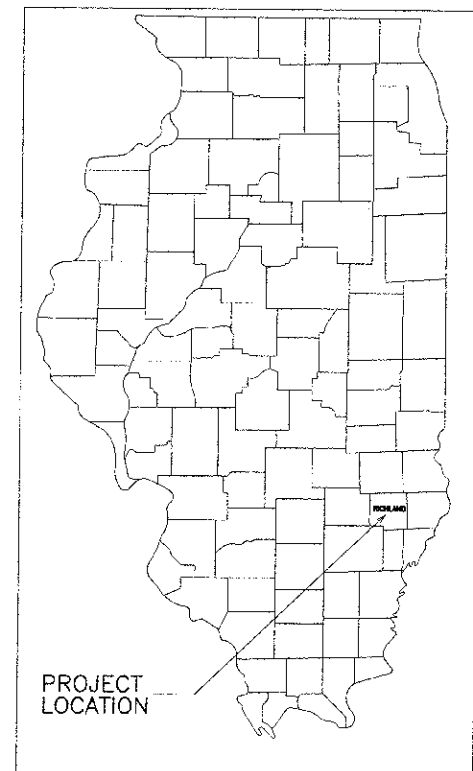


ROUTE	SECTION	COUNTY	TOTAL SHEETS	SHEET NO.
F.A.S. 1722	11-00118-00-BR	RICHLAND	16	1
CONTRACT NO. 95705		ILLINOIS		

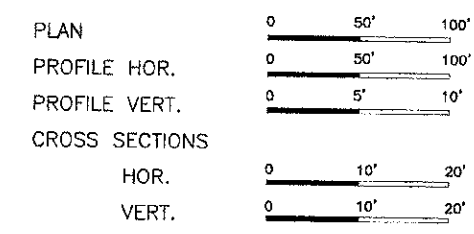
STATE OF ILLINOIS
DEPARTMENT OF TRANSPORTATION
DIVISION OF HIGHWAYS
PLANS FOR PROPOSED
HIGHWAY BRIDGE PROGRAM
SECTION 11-00118-00-BR RICHLAND COUNTY
PROJECT BRS-1722(103)
JOB NO. C-97-023-13
F.A.S. 1722



INDEX OF SHEETS

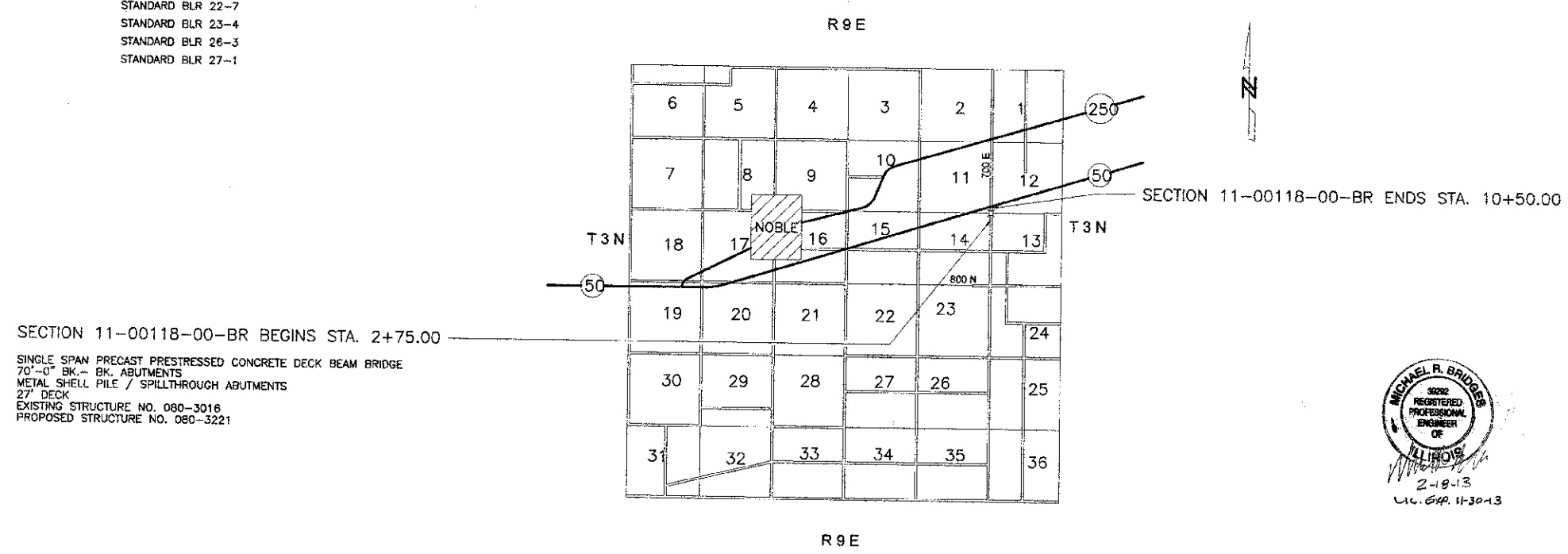
SHEET	ITEM
1	COVER SHEET
2	SUMMARY OF QUANTITIES
3	ROADWAY PLAN AND PROFILE
4	EROSION CONTROL PLAN
5	GENERAL PLAN AND ELEVATION
6	33" x 36" PPC DECK BEAM
7	33" x 36" PPC DECK BEAM DETAILS
8	SUPERSTRUCTURE DETAILS
9	STEEL RAILING, TYPE S-1
10	ABUTMENTS
11	METAL SHELL PILE DETAILS
12-13	BORING LOGS
14-16	CROSS SECTIONS

- STANDARD DRAWINGS
- STANDARD 000001-05
 - STANDARD 280001-07
 - STANDARD 515001-03
 - STANDARD 701901-02
 - STANDARD BLR 21-9
 - STANDARD BLR 22-7
 - STANDARD BLR 23-4
 - STANDARD BLR 26-3
 - STANDARD BLR 27-1

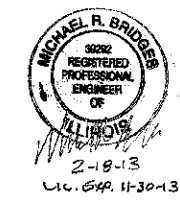


CONTRACT NO. 95705

Joint Utility Locating Information for Excavators
JULIE 1-800-892-0123



SINGLE SPAN PRECAST PRESTRESSED CONCRETE DECK BEAM BRIDGE
70'-0" BK.- BK. ABUTMENTS
METAL SHELL PILE / SPILLTHROUGH ABUTMENTS
27' DECK
EXISTING STRUCTURE NO. 080-3016
PROPOSED STRUCTURE NO. 080-3221



CHARLESTON ENGINEERING, INC.
CONSULTING ENGINEERS
105 NORTH KITCHELL
P.O. BOX 397
OLNEY, ILLINOIS 62450
(618) 362-0736
ILLINOIS DEPARTMENT OF PROFESSIONAL REGULATION REGISTRATION #194.003513

APPROVED February 25 2013
Dann A. Colwell p.e.
COUNTY ENGINEER

STATE OF ILLINOIS
DEPARTMENT OF TRANSPORTATION

PASSED 2/28 2013
Maurice Costello
DISTRICT SEVEN ENGINEER OF
LOCAL ROADS AND STREETS

Releasing For Bid Based on Limited Review
2/28 2013
Joan L. Anshel
DEPUTY DIRECTOR OF HIGHWAYS
REGION FOUR ENGINEER

FUNCTIONAL CLASSIFICATION - RURAL MAJOR COLLECTOR
ADT = 275
DESIGN SPEED = 30 MPH

NET LENGTH SECTION 11-00118-00-BR = 775.00 Ft. = 0.147 Mi.