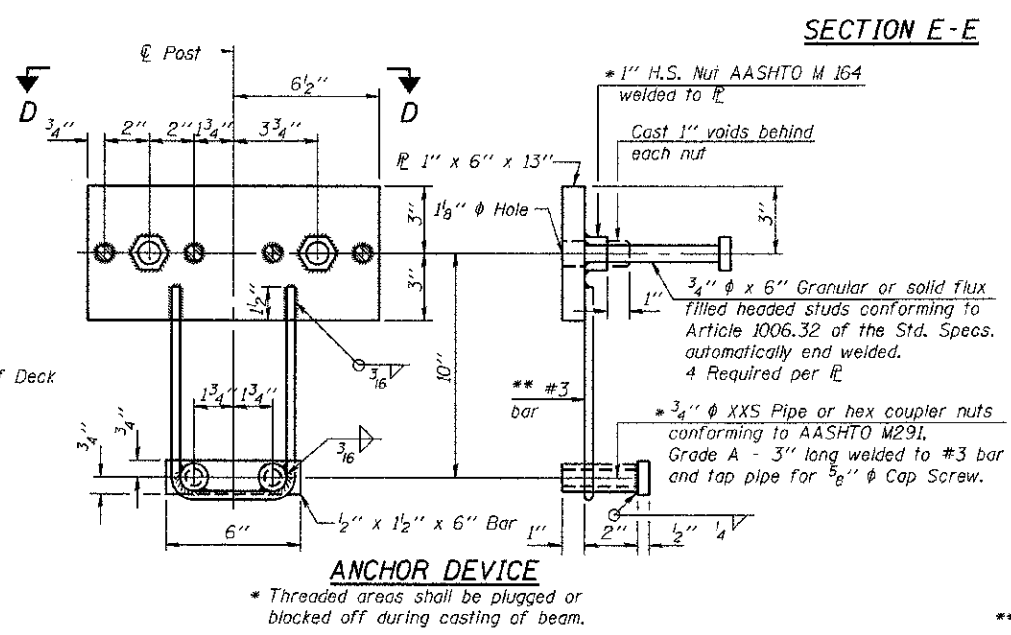
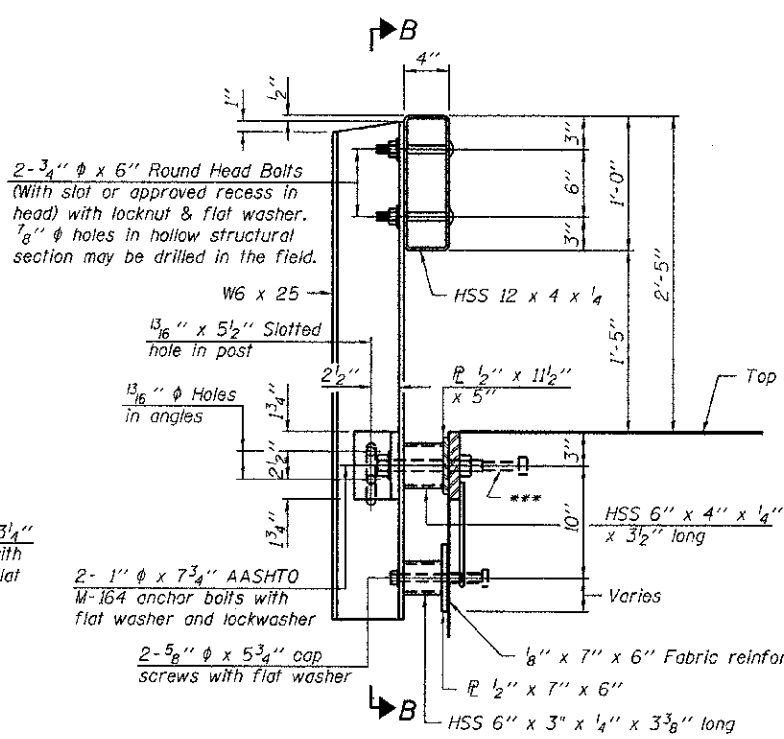
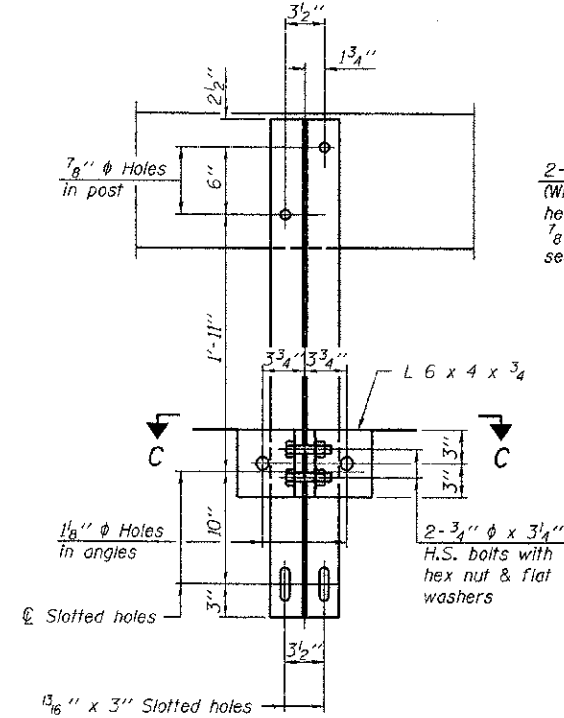
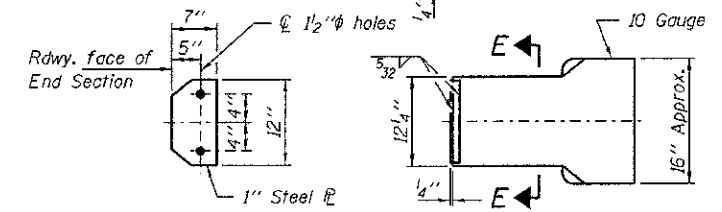
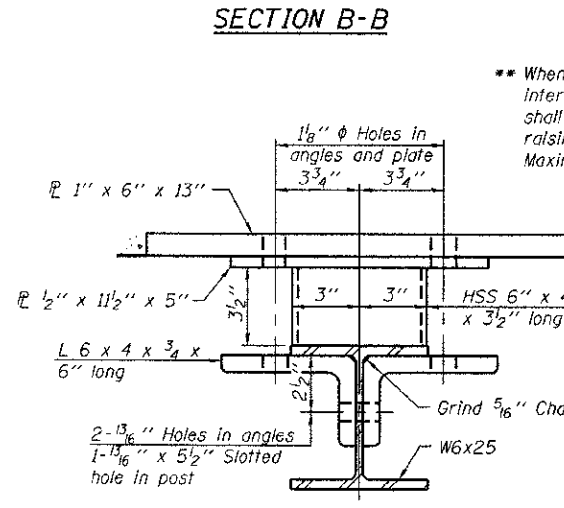


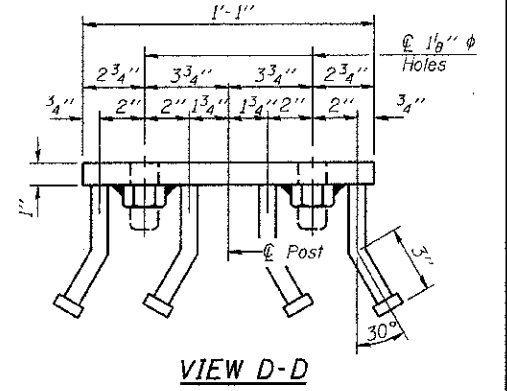
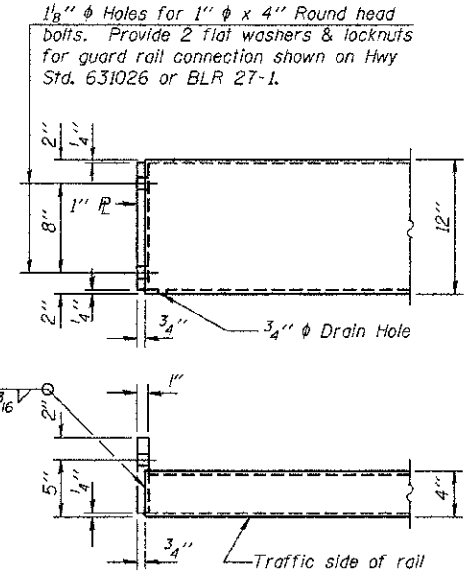
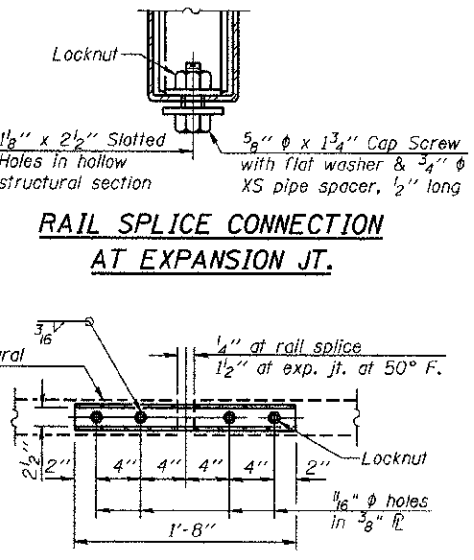
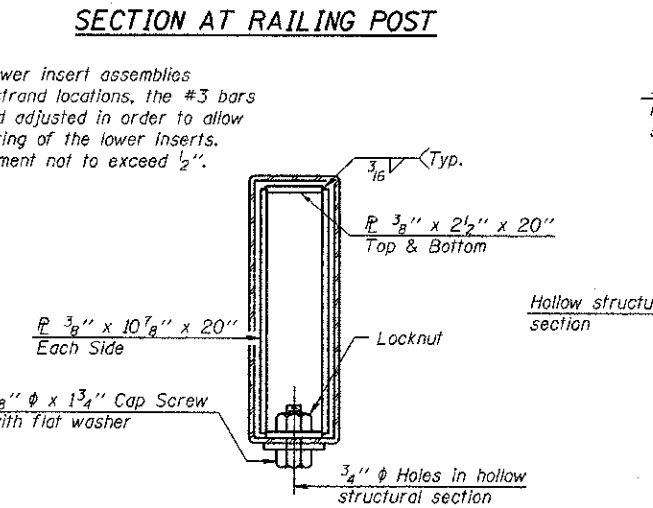
Note: Cost of curled end sections shall be included with the Steel Railing. (2 Required)



Notes:
 All field drilled holes shall be coated with an approved zinc rich paint before erection.
 For multi-span bridges, sufficient 1/4\"/>



** Whenever the lower insert assemblies interfere with strand locations, the #3 bars shall be cut and adjusted in order to allow raising or lowering of the lower inserts. Maximum adjustment not to exceed 1/2\"/>



BILL OF MATERIAL

Item	Unit	Quantity
Steel Railing, Type S-1	Foot	139

R-23A 7-1-10 (10'-9" Maximum Post Spacing)

FILE NAME - #FILE#	USER NAME =	DESIGNED - D.W.T.	REVISED -
HAMPTON, LENZINI AND RENWICK, INC.		CHECKED - S.W.M.	REVISED -
1000 STEVENSON DRIVE, SUITE 201		DRAWN - R.D.H.	REVISED -
SPRINGFIELD, ILLINOIS 62702		CHECKED - D.A.B.	REVISED -
ILLINOIS PROFESSIONAL DESIGN FIRM			
LS 1767 SE CORP. 154-000000			

STATE OF ILLINOIS
 RICHLAND COUNTY HIGHWAY DEPARTMENT

STEEL RAILING, TYPE S-1
 STRUCTURE NO. 080-3221

F.A.S.	SECTION	COUNTY	TOTAL SHEETS	SHEET NO.
1722	11-00118-00-BR	RICHLAND	16	9
			CONTRACT NO. 95705	
ILLINOIS FED. AID PROJECT				

SHEET NO. 5 OF 9 SHEETS