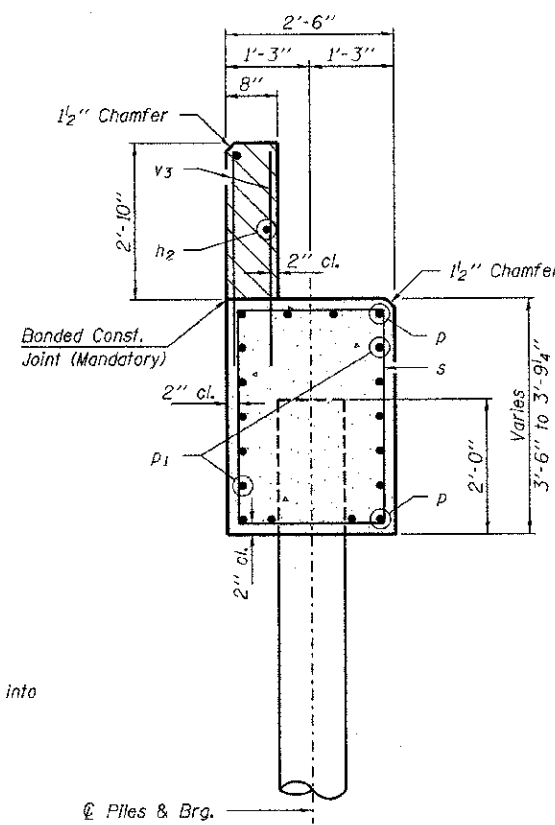
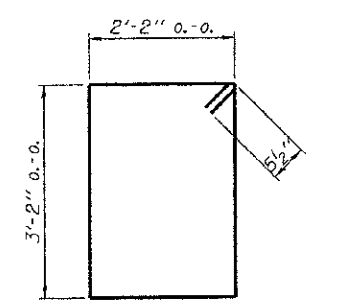


PLAN

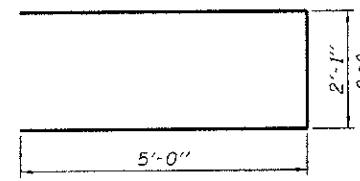


SECTION A-A

Hatched area to be poured after beams are in place.

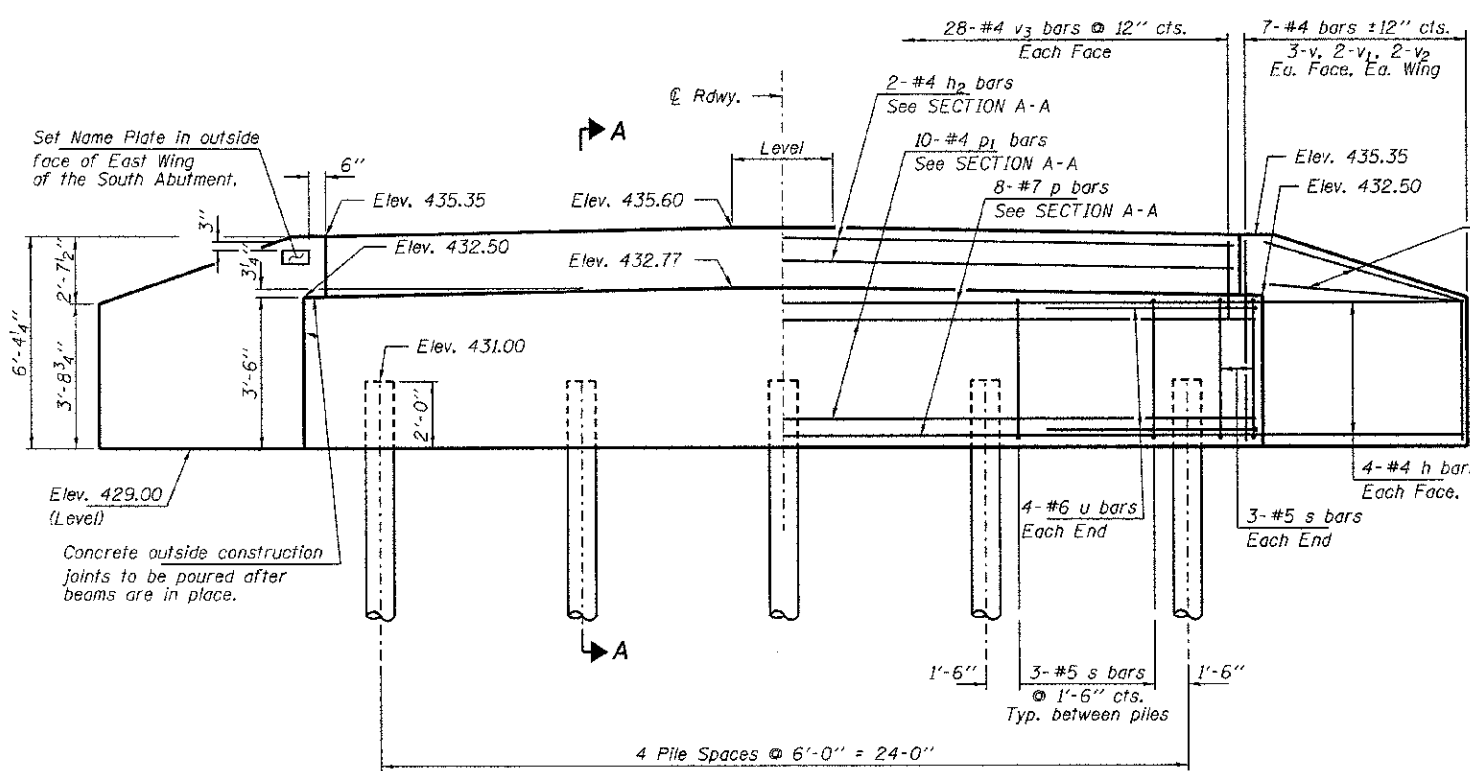


BAR s



BAR u

Note: Extend h bars into abutment cap.



ELEVATION

Each Wing Bend in field.
Fan 2-#4 h bars (B.F.)
Fan 2-#4 h1 bars (F.F.)

BILL OF MATERIAL - 2 ABUTS.

BAR	NO.	SIZE	LENGTH	SHAPE
h	40	#4	7'-6"	—
h1	8	#4	6'-0"	—
h2	4	#4	28'-2"	—
p	16	#7	28'-2"	—
p1	20	#4	28'-2"	—
s	36	#5	11'-7"	□
u	16	#6	12'-1"	—
v	24	#4	5'-5"	—
v1	16	#4	4'-5"	—
v2	16	#4	3'-5"	—
v3	112	#4	3'-8"	—
Concrete Structures			Cu. Yd.	27.4
Reinforcement Bars			Pound	2,780
Metal Shells 12"x0.250"			Foot	225
Test Pile Metal Shell 12"x0.250"			Each	1
Name Plates			Each	1

PILE DATA

Type ----- Metal Shell 12"x0.250"
 No. Req'd. (2 Abuts.) ----- *10
 Factored Resistance Available (Rf) ----- 167 Kips/Pile
 Nominal Required Bearing (Rn) ----- 304 Kips/Pile
 Est. Length ----- 25 Ft/Pile

Notes: * Includes one test pile to be driven in permanent location at the South Abutment.

The test piles shall be driven to 110 percent of the Nominal Required Bearing indicated in the pile data information.