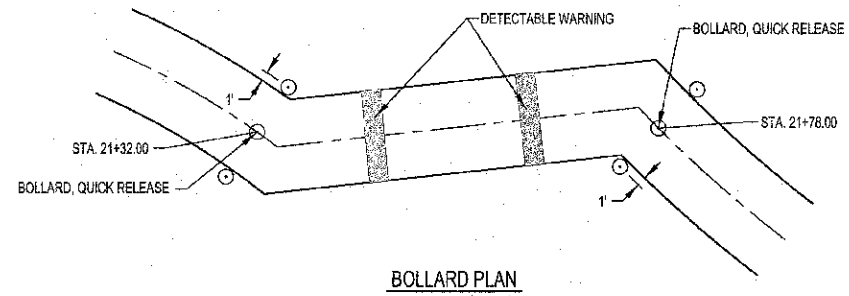
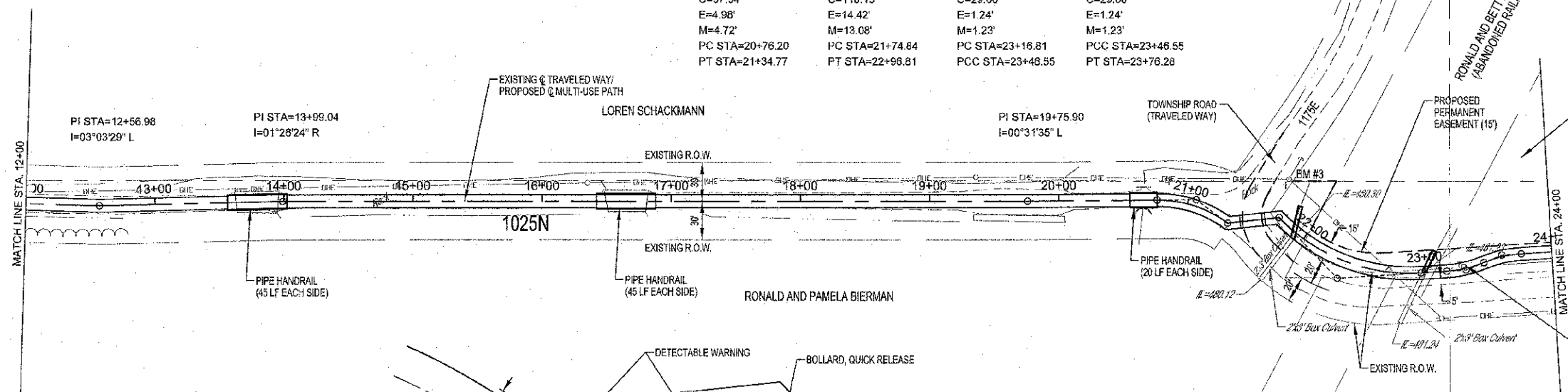


ROUTE NO.	SECTION	COUNTY	TOTAL SHEETS	SHEET NO.
10-0045-00-BT		JASPER	46	8
FED. ROAD DIST. NO. 7		LL 1008	FED. AID PROJECT	

CONTRACT #8708

CURVE #2	CURVE #3	CURVE #4	CURVE #5
PI STA=21+06.56	PI STA=22+40.00	PI STA=23+31.62	PI STA=23+61.55
I=37°17'04" R	I=49°55'07" L	I=18°55'48" L	I=18°55'48" R
Da=63°39'43"	Da=40°55'32"	Da=63°39'43"	Da=63°39'43"
T=30.38'	T=65.16'	T=15.00'	T=15.00'
R=90.00'	R=140.00'	R=90.00'	R=90.00'
L=56.57'	L=121.97'	L=29.74'	L=29.74'
C=57.54'	C=118.15'	C=29.60'	C=29.60'
E=4.98'	E=14.42'	E=1.24'	E=1.24'
M=4.72'	M=13.08'	M=1.23'	M=1.23'
PC STA=20+76.20	PC STA=21+74.84	PC STA=23+16.81	PCC STA=23+48.55
PT STA=21+34.77	PT STA=22+96.81	PCC STA=23+48.55	PT STA=23+76.28



NOTE: CONTRACTOR TO FIELD VERIFY BETWEEN BENCHMARK ELEVATIONS

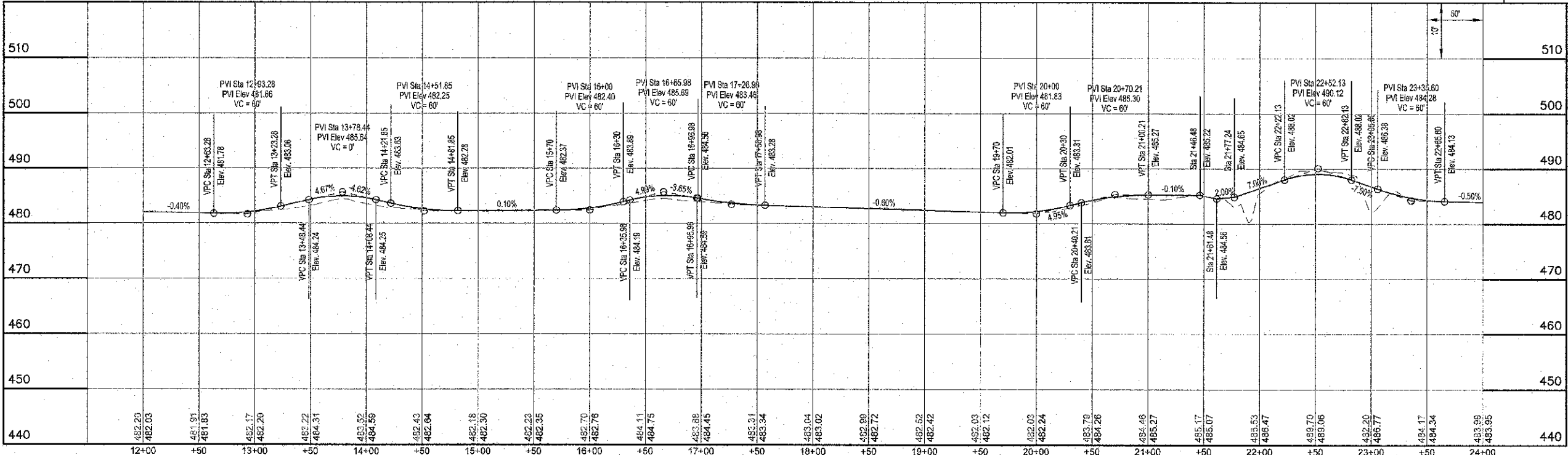
BM #2
RAILROAD SPIKE IN POWER POLE
AT 30.0'L, STA. 10+03.7
ELEV.=486.49

BM #3
RAILROAD SPIKE IN POWER POLE
AT 28.8'L, STA. 21+85.7 (FWD)
ELEV.=485.94

MILANO & GRUNICH ENGINEERS, LLC
14 WEST WASHINGTON
P.O. BOX 667
EFFINGHAM, ILL. 62401
Phone: (217) 247-7282
(800) 477-4714
Fax: (217) 242-2455
Web Address: www.mgengr.com
Dustin Filmer: 334.003108

File name: S:\DWG\1010294\dwg\Trail.dwg
Print date: 04/10/13 at 10:15

SCALES:
1" = 60' HOR
1" = 10' VER



MULTI-USE PATH