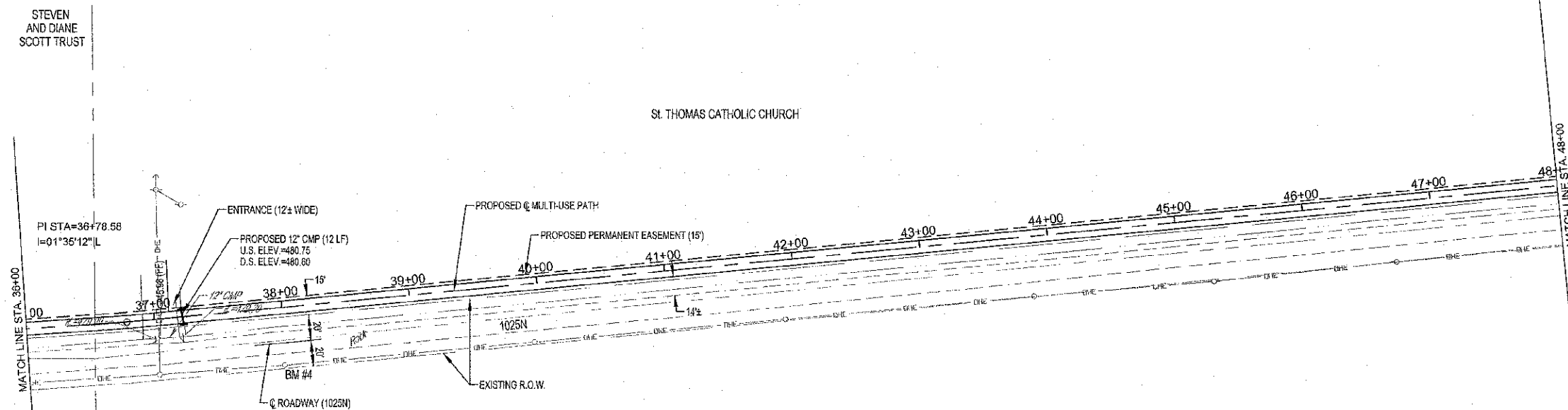


ROUTE NO.	SECTION	COUNTY	TOTAL SHEETS	SHEET NO.
10-0045-00-81	JASPER	46	10	
PROJ. ROAD DIST. NO. 7				
CONTRACT #95708				



SCALES:
1" = 50' HOR
1" = 10' VER

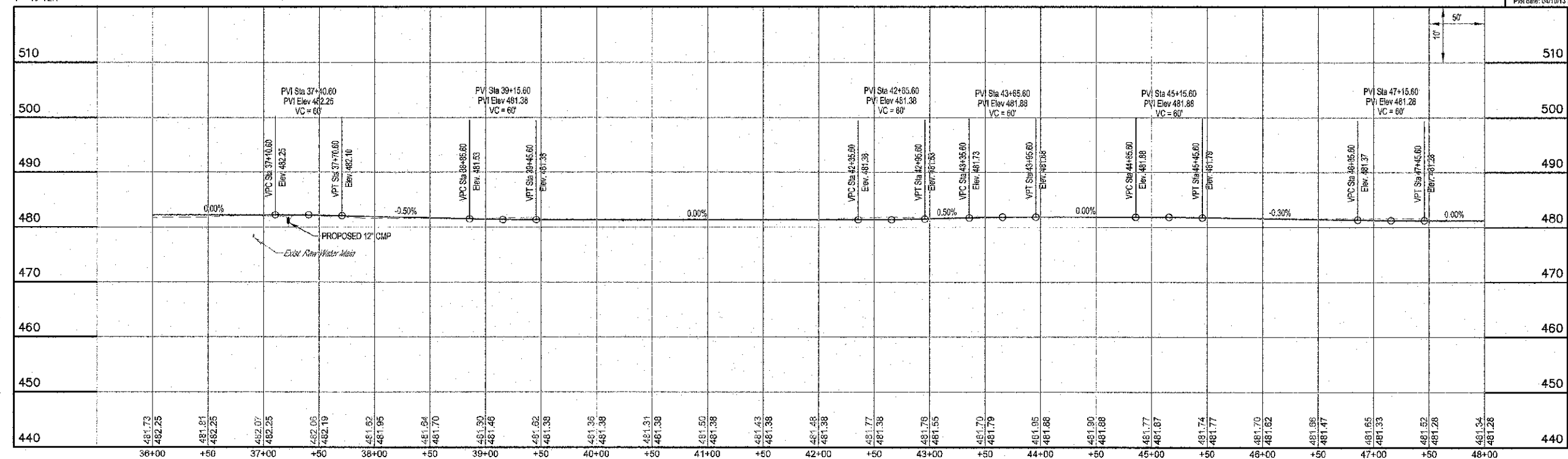
NOTE: CONTRACTOR TO FIELD VERIFY BETWEEN BENCHMARK ELEVATIONS

BM #3
RAILROAD SPIKE IN POWER POLE
AT 28.81'L, STA. 21+85.7 (FWD)
ELEV. = 486.94

BM #4
RAILROAD SPIKE IN POWER POLE
AT 49.77'L, STA. 46+32.6
ELEV. = 493.15

MILANO & GRUNLOCH ENGINEERS, LLC
114 WEST WASHINGTON
P.O. BOX 897
EFFINGHAM, ILLINOIS 62424
Phone: (217) 347-7222
(815) 617-0714
Fax #: (217) 347-2435
Web Address: www.milanoeng.com
Design Firm #: 154-001108

File name: S:\DWG\10-0045\dwg\10-0045.dwg
Plot date: 04/10/13 at 16:50 F:\3-000-000-000-000



MULTI-USE PATH