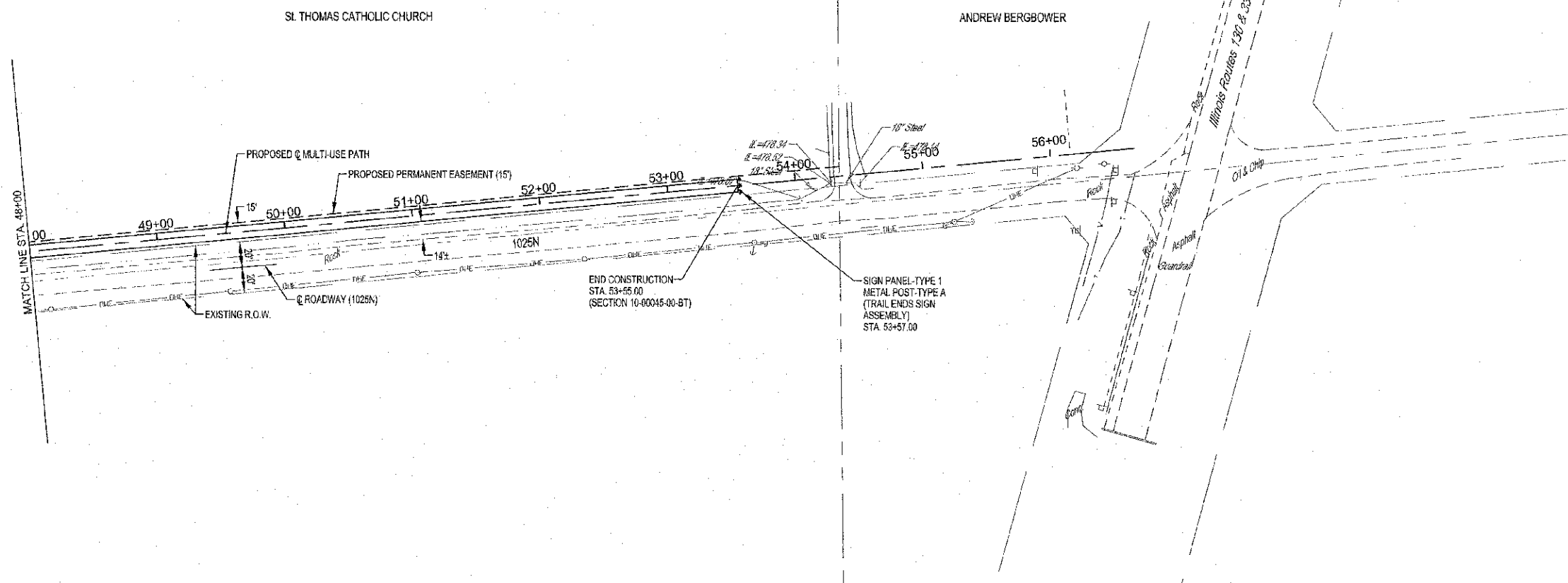


ROUTE NO.	SECTION	COUNTY	TOTAL SHEETS	SHEET NO.
10-00045-00-BT		JASPER	46	11
FED. ROAD DIST. NO. 7	BLK/SEC	PER. AD. PROJECT		

CONTRACT #95708



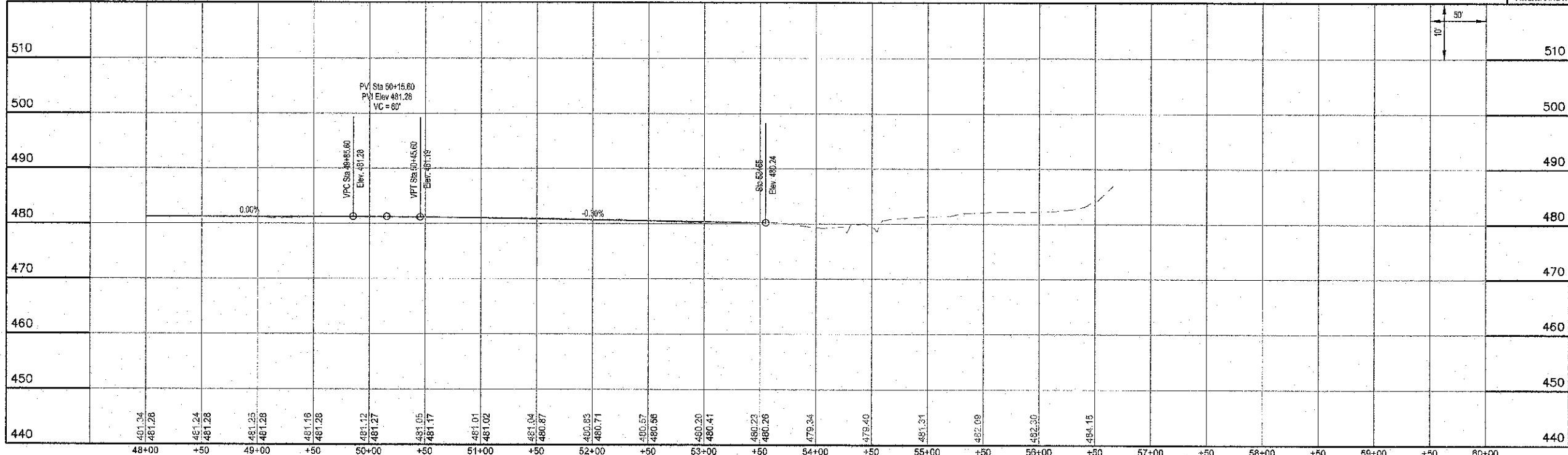
SCALES:
1" = 60' HOR
1" = 10' VER

NOTE: CONTRACTOR TO FIELD VERIFY BETWEEN BENCHMARK ELEVATIONS

- BM #3**
RAILROAD SPIKE IN POWER POLE
AT 28.8' LT, STA. 21+65.7 (FWD)
ELEV. = 486.94
- BM #4**
RAILROAD SPIKE IN POWER POLE
AT 43.7' RT, STA. 48+32.5
ELEV. = 483.15

MILANO & GRUNLOH ENGINEERS, LLC
134 WEST WASHINGTON
P.O. BOX 897
EFFINGHAM, ILLINOIS 62401
Phone: (217) 547-7922
Fax: (217) 547-2714
Web Address: www.milanogrunloh.com
Delta Plot # 1M-523128

File name: S:\DWG\213\1029\4idp\Trail.dwg
Plot date: 04/10/13 at 19:30 P.B. 085AM07.000.000



MULTI-USE PATH