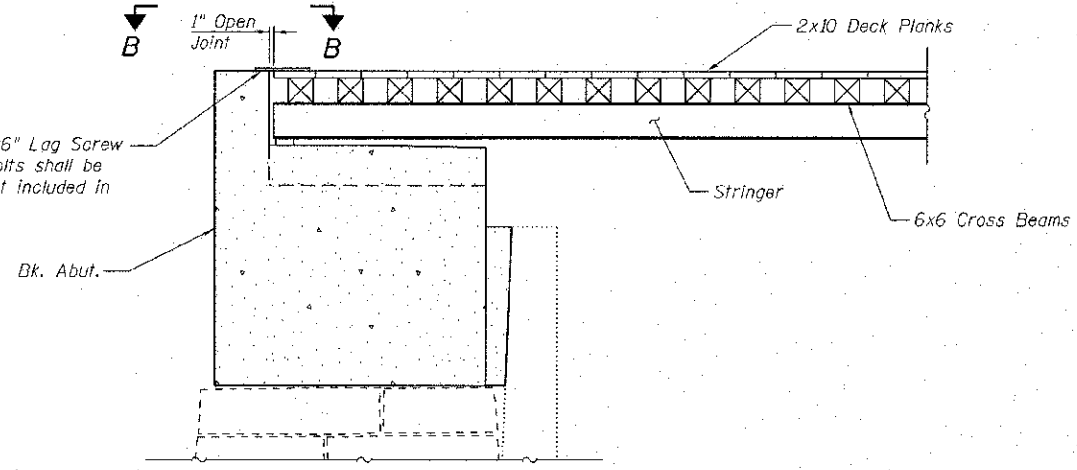
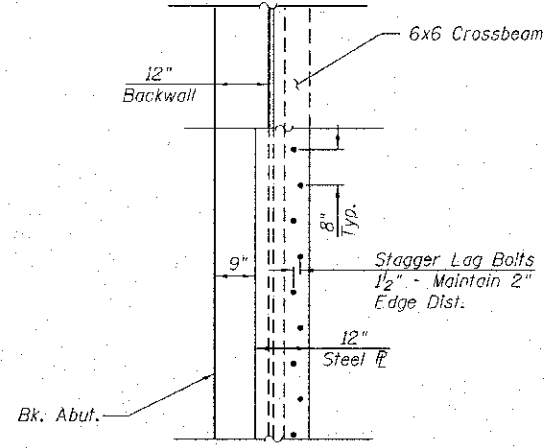


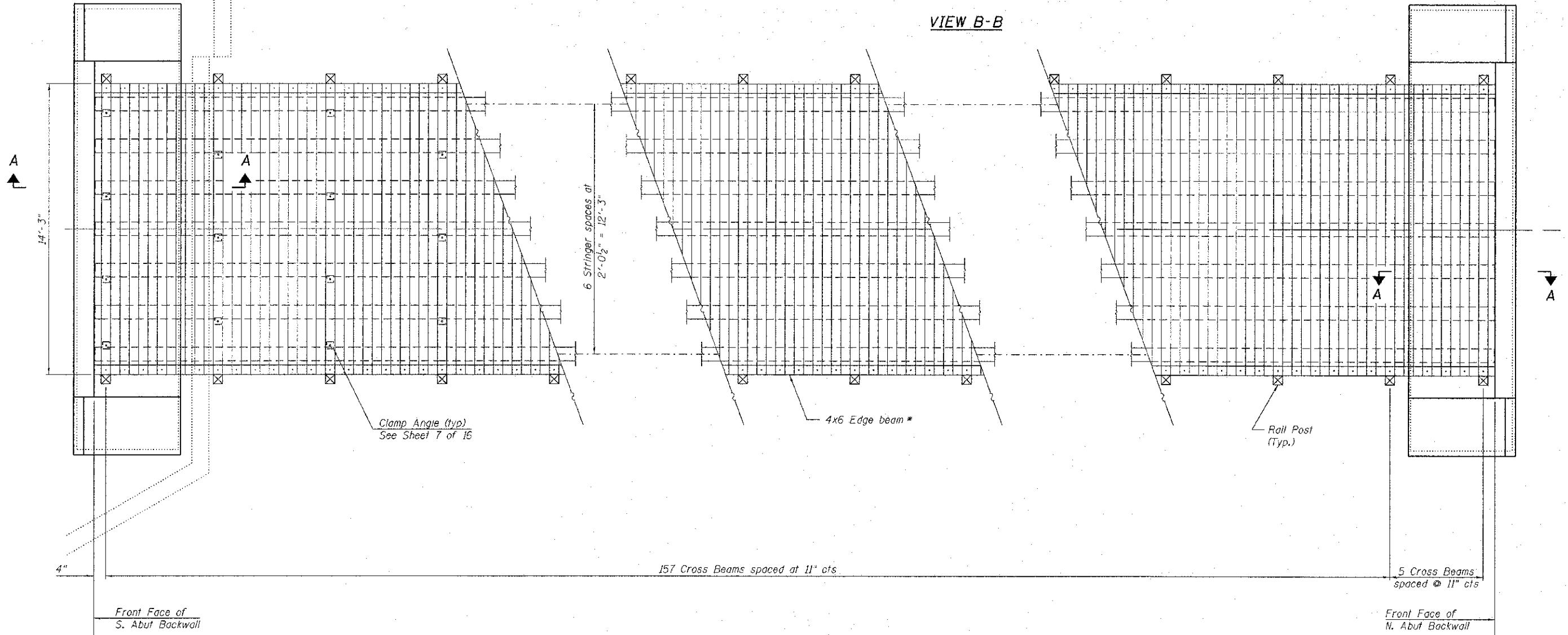
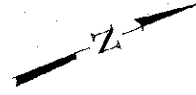
Use 1/4" x 12" x 14'-0"  
Bolt to deck using 1/2" x 6" Lag Screw  
at 8" cts. (Plate and Bolts shall be  
Hot-Dip Galvanized) Cost included in  
HARDWARE



**SECTION A-A**  
(Typ Each End)



**VIEW B-B**



**TIMBER DECK FRAMING PLAN**  
(Deck Planks & Rolling Not Shown)

\* Provide 4x6 Edge Beam in minimum 10' length. Locate butt joints  
between cross beams. No butt joints allowed at rail posts.

See Sheet 5 of 16 For Bill of Material

FILE NAME = S:\Projects\2012\J00512-16-010011\400 Newson Bk. Fch\1000\CADD Sheets\0403084-xxxx-006-TimberDeck Framing Detail.dgn  
 MODEL = BRIDGES  
 PLOT DRIVER = PLOTDRIVER\$



USER NAME = kchapman	DESIGNED -	REVISED
FILE NAME = 0403084-xxxx-006-TimberDeck	CHECKED = test.dgn	REVISED
PLOT SCALE = 200.0000 ' / in.	DRAWN -	REVISED
PLOT DATE = 4/11/2013	CHECKED -	REVISED

**STATE OF ILLINOIS**  
**DEPARTMENT OF TRANSPORTATION**

**TIMBER FRAMING DETAILS**  
**STRUCTURE NO. 040-3084**  
SHEET NO. 6 OF 16 SHEETS

TR	SECTION	COUNTY	TOTAL SHEETS	SHEET NO.
164	10-00045-00-BT	JASPER	40	21
CONTRACT NO.				
ILLINOIS FED. AID PROJECT				