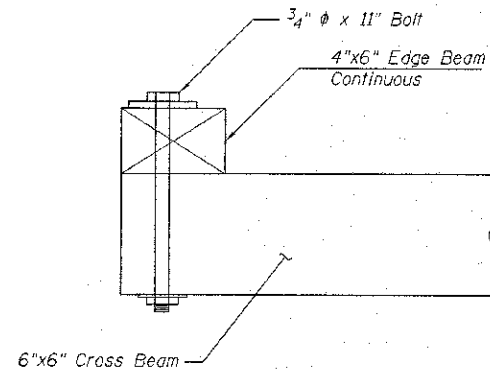
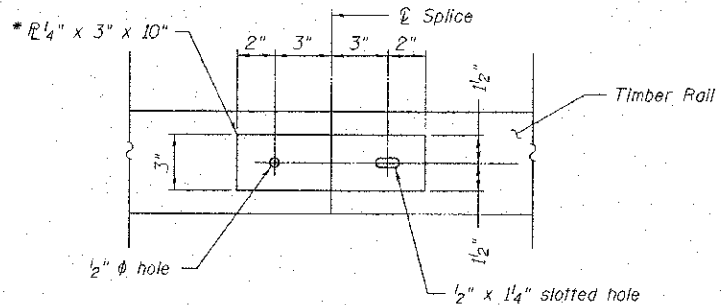


PLAN AT RAIL POST

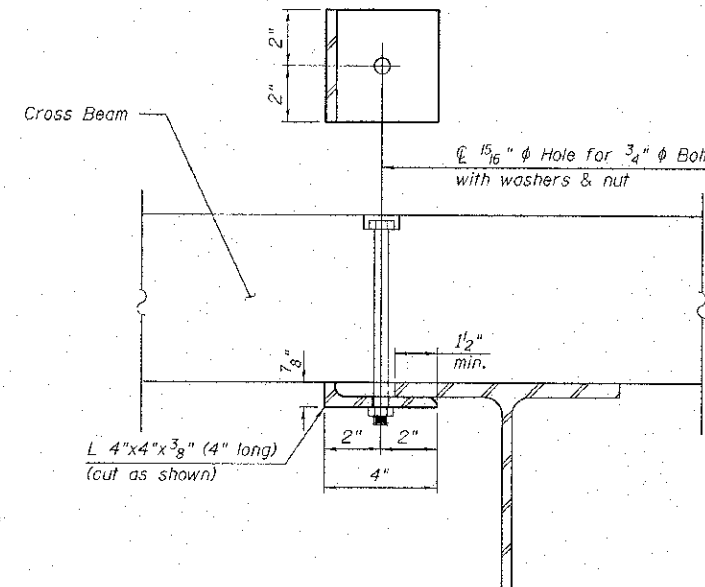


SECTION A-A



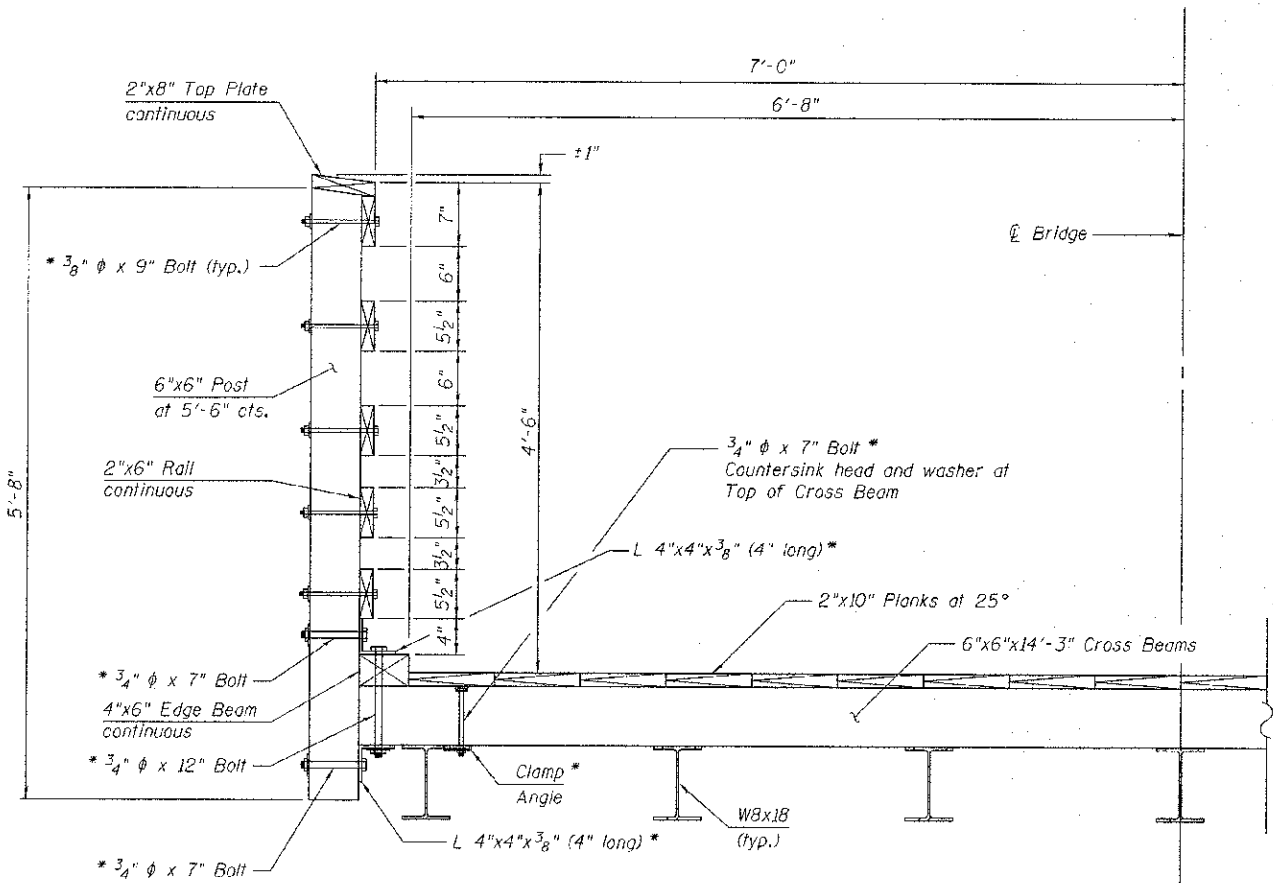
SPLICE DETAIL *

Note: Minimize splices in rails and top plate. Where possible span 3 rail posts. All bolts shall be Carriage Bolts with washer under head and nut unless otherwise shown.



CLAMP ANGLE *

(96 Required)



SECTION AT RAIL POST

* Weight included in HARDWARE

See Sheet 5 of 16 for Bill of Material

TIMBER DECK SCHEDULE

Description	Nominal Size	No.	Length (Foot)	Total Area (Sq Ft)	Foot Board Measure
Deck Plank	2x10	17	148'-3"	2,100.21	4,200.42
Cross Beam	6x6	162	14'-3"	1,154.25	6,925.50
Edge Beam	4x6	2	148'-3"	148.25	593.00
				Total	11,718.92
				Use	11,720

TIMBER RAILING SCHEDULE

Description	Nominal Size	No.	Length (Foot)	Total Area (Sq Ft)	Foot Board Measure
Post	6x6	56	5'-8"	158.76	952.56
Top Plate	2x8	2	149'-3"	199.00	398.00
Rails	2x6	10	149'-3"	746.25	1,492.50
				Total	2,843.06
				Use	2,850

DECK HARDWARE SCHEDULE

Description	No.	Weight per Each	Total Weight (Lbs.)	Comments
3/4" x 12" Bolt w/nut & 2 washers	56	1.81	101.36	1 per post
3/4" x 11" Bolt w/nut & 2 washers	268	1.69	452.92	2 per cross beam - posts
3/4" x 7" Bolt w/nut & 2 washers	98	1.18	115.64	alt. 3 or 4 per post beam
Clamp Angle 4"x4"x3/8" (4" long)	98	3.23	316.54	alt. 3 or 4 per post beam
Joint Plate 12"x4" (14" long)	2	147.17	294.34	1 each end
Lag Screw 1/2" x 6"	42	0.31	13.02	21 each end
Deck Screw 3/8" x 6"	2592	0.21	544.32	2/plank at intersection w/ cross beam
			Total	1838.14
			Use	1840

RAILING HARDWARE SCHEDULE

Description	No.	Weight per Each	Total Weight (Lbs.)	Comments
3/8" x 9" Bolt w/nut & washer	280	0.31	86.8	5 per post
3/4" x 7" Bolt w/nut & washer	112	1.13	126.56	2 per post
Post Angle 4"x4"x3/8" (4" long)	112	3.23	361.76	2 per post
Top Plate screws 3/8"x6"	112	0.21	23.52	2 per post
Splice Plate 3"x10"x4"	144	2.13	306.72	est. 12 per rail and top PL
Splice 3/8" x 3" Bolt w/nut and washer	288	0.12	34.56	2 per splice
			Total	939.92
			Use	940

FILE NAME = 0403084-xxxx-087-Timber Details.dgn
 MODEL = Default
 PLOT DRIVER = V8,TDOT_PDF.plt,17.plt,6



QUIGG ENGINEERING INC

USER NAME = S.Dulekus	DESIGNED -	REVISION
FILE NAME = 0403084-xxxx-087-Timber Details.dgn	CHECKED -	REVISION
PLOT SCALE = 20@0.0000 1" = 10'	DRAWN -	REVISION
PLOT DATE = 4/11/2013	CHECKED -	REVISION

STATE OF ILLINOIS
 DEPARTMENT OF TRANSPORTATION

TIMBER DETAILS
 STRUCTURE NO. 040-3084

SHEET NO. 7 OF 16 SHEETS

TR	SECTION	COUNTY	TOTAL SHEETS	SHEET NO.
164	10-00045-00-BT	JASPER	76	22
CONTRACT NO.				

ILLINOISIFIED, AID PROJECT