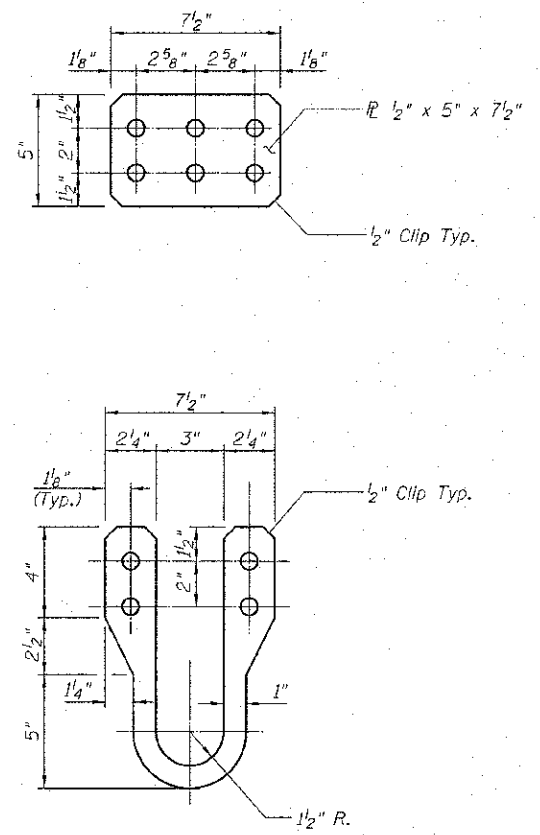
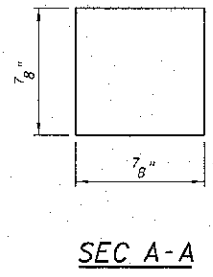


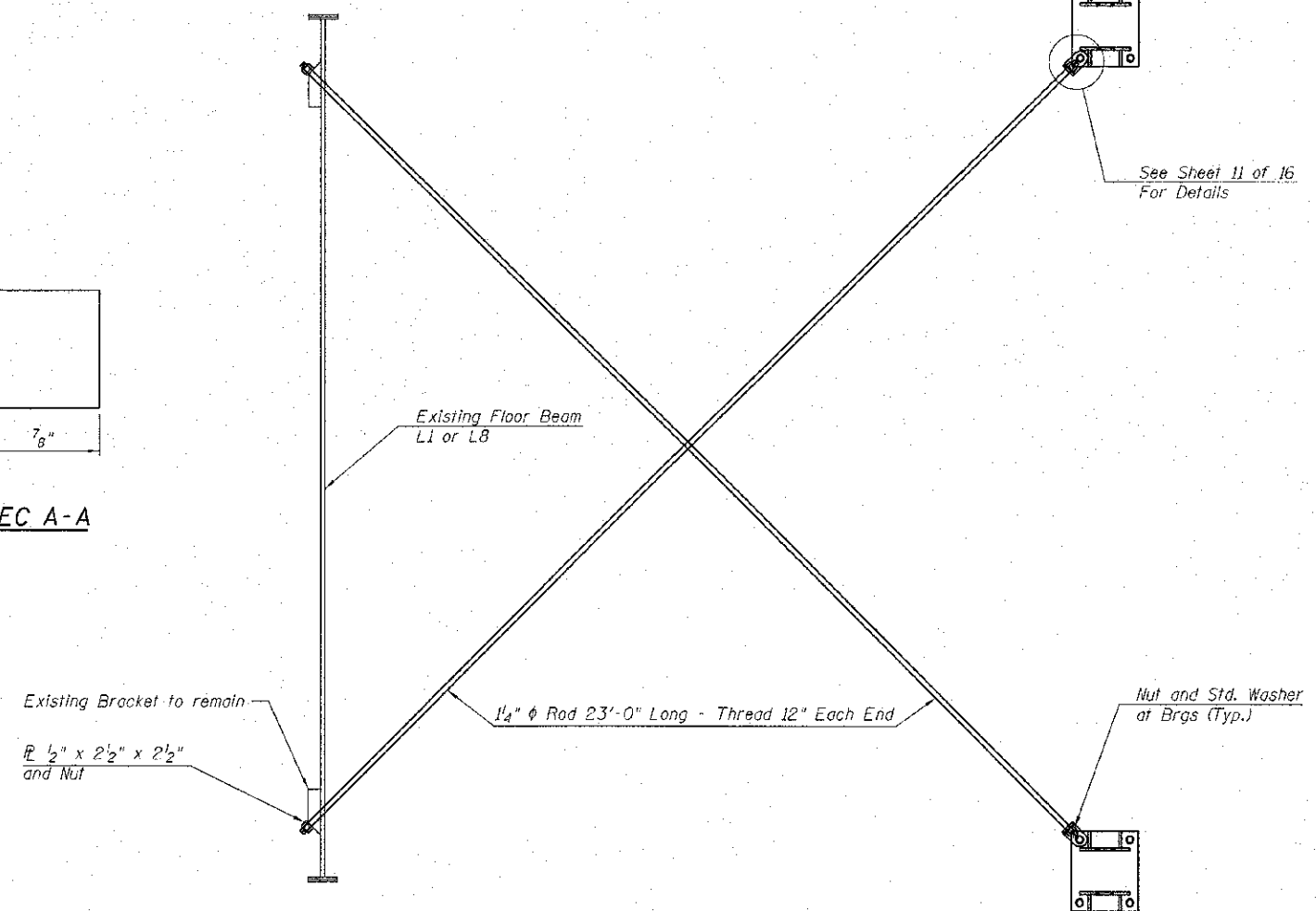
COUNTER END
(Fabricate From 7/8" Plate)



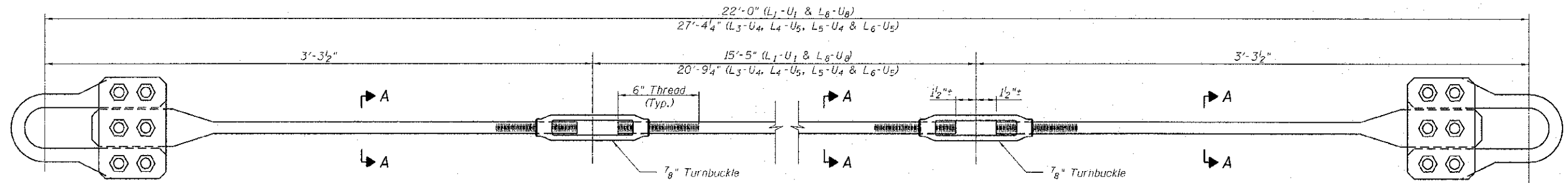
COUNTER PIN CONNECTOR
(Cut From PL 7/8" x 7 1/2" x 1 1/2")



SEC A-A



PLAN - SWAY BRACING - BOTTOM
(Typical End Bays)



PLAN

- Notes**
1. Structural Steel for Counters and Sway Bracing shall conform to AASHTO M270, Grade 50W.
 2. Bolts for Counters shall conform to ASTM A325, Type 3.
 3. All Counters are installed in pairs.
 4. Cost of steel members and hardware for Counters and Sway Bracing is included in FURNISHING & ERECTING STRUCTURAL STEEL.
 5. Removal of existing Counters and Sway Bracing shall be included in the cost for STRUCTURAL STEEL REMOVAL.

BILL OF MATERIAL

ITEM	UNIT	TOTAL
Furnishing & Erecting Structural Steel	Pound	6,550
Structural Steel Removal	Pound	2,520

FILE NAME = 0403084-xxxx-009-ReplaceCounterDetails.dgn
 MODEL = 0403084-xxxx-009-ReplaceCounterDetails.dwg
 PLOT DRIVER = VBA_PLOT.PDF...11-17-11 10:59



USER NAME = S.Doleks	DESIGNED -	REVISED
FILE NAME = 0403084-xxxx-009-ReplaceCounterDetails.dgn	CHECKED -	REVISED
PLOT SCALE = 200.0000 1" = 10'	DRAWN -	REVISED
PLOT DATE = 4/11/2013	CHECKED -	REVISED

STATE OF ILLINOIS
DEPARTMENT OF TRANSPORTATION

REPLACEMENT COUNTER DETAILS
STRUCTURE NO. 040-3084

SHEET NO. 9 OF 16 SHEETS

TR	SECTION	COUNTY	TOTAL SHEETS	SHEET NO.
164	10-00045-00-BT	JASPER	46	27
CONTRACT NO.				
ILLINOIS FED. AID PROJECT				