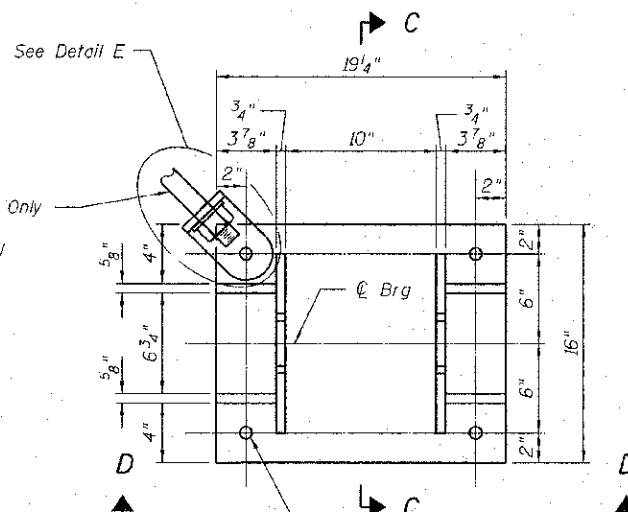
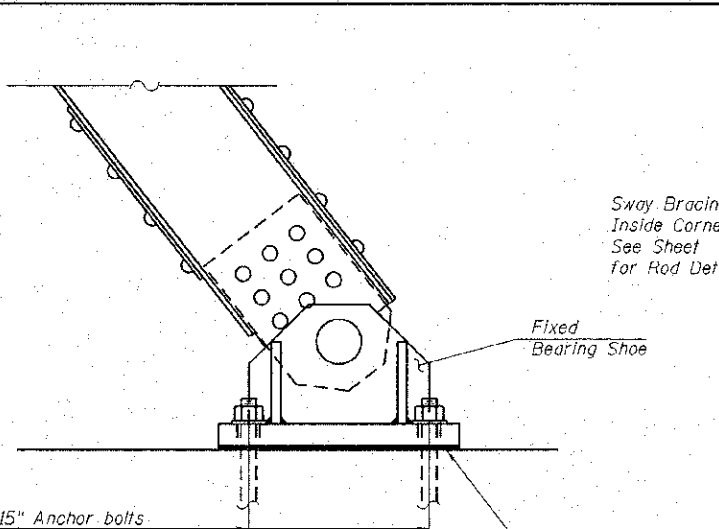


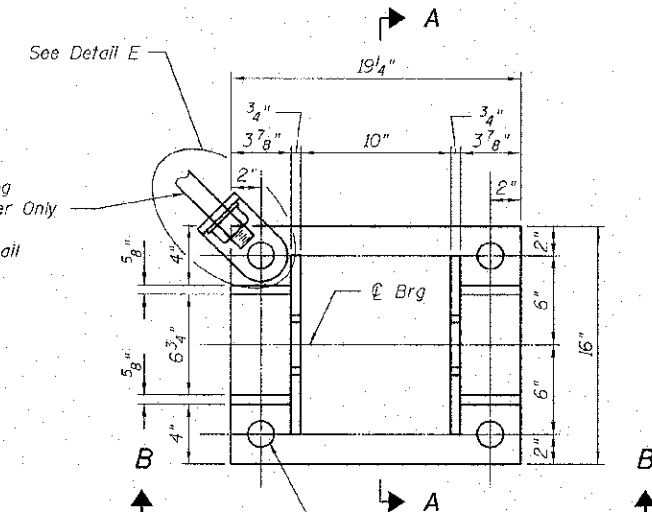
ELEVATION AT SOUTH ABUT.
(Expansion Bearing)



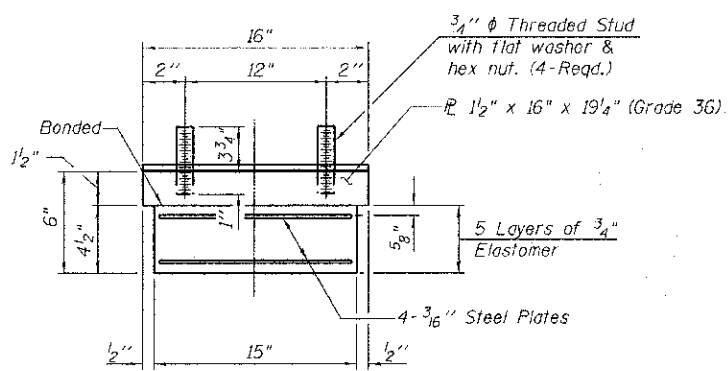
PLAN
(Exp. Brg Shoe)



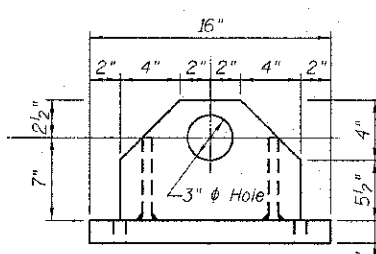
ELEVATION AT NORTH ABUT.
(Fixed Bearing)



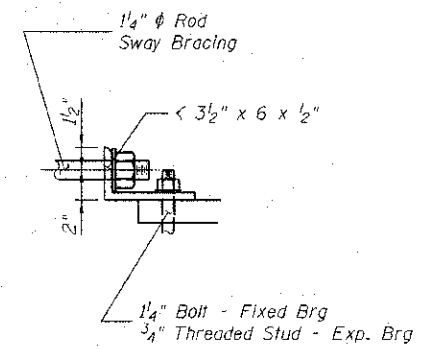
PLAN
(Fixed Brg Shoe)



ELASTOMERIC BEARING ASSEMBLY, TYPE 1

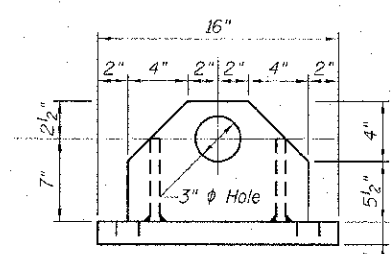


SECTION C-C
(Exp. Brg Shoe)

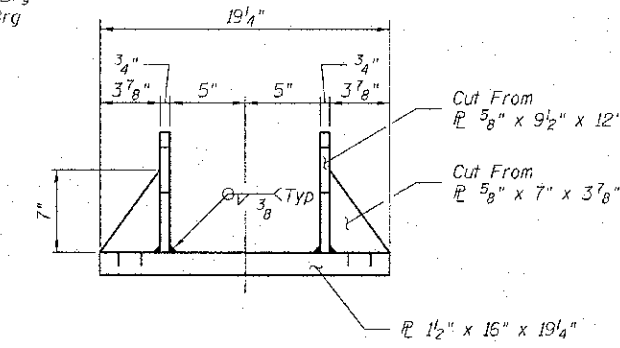


SECTION F-F

DETAIL E

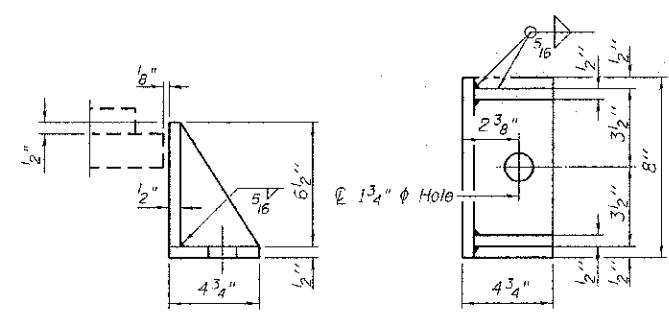


SECTION A-A
(Fixed Brg Shoe)



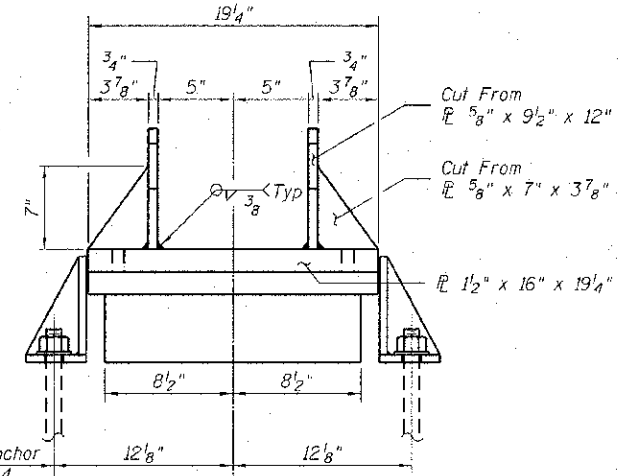
SECTION B-B
(Fixed Brg)

Note:
Shim plates shall not be placed under Bearing Assembly.



SIDE RETAINER

Equivalent rolled angle with stiffeners will be allowed in lieu of welded plates.



SECTION D-D
(Exp. Brg)

Notes:
Anchor bolts shall be ASTM F1554 all-thread (or an Engineer-approved alternate material) of the grade(s) and diameter(s) specified. ASTM A307 Grade C anchor bolts may be used in lieu of ASTM F1554 Grade 36 (Fy=36ksi). The corresponding specified grade of AASHTO M314 anchor bolts may be used in lieu of ASTM F1554.

Anchor bolts at fixed bearings may be either cast in place or installed in holes drilled after the supported member is in place.

Anchor bolts for side retainers may be cast in place or installed in holes drilled before or after members are in place.

Drilled and set anchor bolts shall be installed according to Article 521.06 of the Standard Specifications.

Side retainers, shims and other steel members required for the bearing assembly shall be included in the cost of STRUCTURAL STEEL.

Fixed Bearings shall not be paid for separately but shall be included in the cost of STRUCTURAL STEEL.

Two 1/8 in. adjusting shims shall be provided for each bearing in addition to all other plates or shims and placed as shown on bearing details.

BILL OF MATERIAL

Item	Unit	Total
Elastomeric Bearing Assembly Type 1	Each	2
Anchor Bolts 1/2"	Each	12
Structural Steel	Lbs	1250
Steel Removal	Lbs	800

FILE NAME = S:\P\0403084\2017\JOB\12-16-16\0111-Bearing\0403084.dwg
 MODEL = SHEET16
 PLOT DRIVER = PLOTDRIVER



USER NAME = kchapman	DESIGNED -	REVISED
FILE NAME = 0403084-xxxx-011-Bearing	CHECKED -	REVISED
PLOT SCALE = 200.0000	DRAWN -	REVISED
PLOT DATE = 4/18/2013	CHECKED -	REVISED

STATE OF ILLINOIS
DEPARTMENT OF TRANSPORTATION

BEARING DETAILS
STRUCTURE NO. 040-3084

SHEET NO. 11 OF 16 SHEETS

TR	SECTION	COUNTY	TOTAL SHEETS	SHEET NO.
164	10-00045-00-B1	JASPER	40	26
			CONTRACT NO.	
ILLINOIS FED. AID PROJECT				