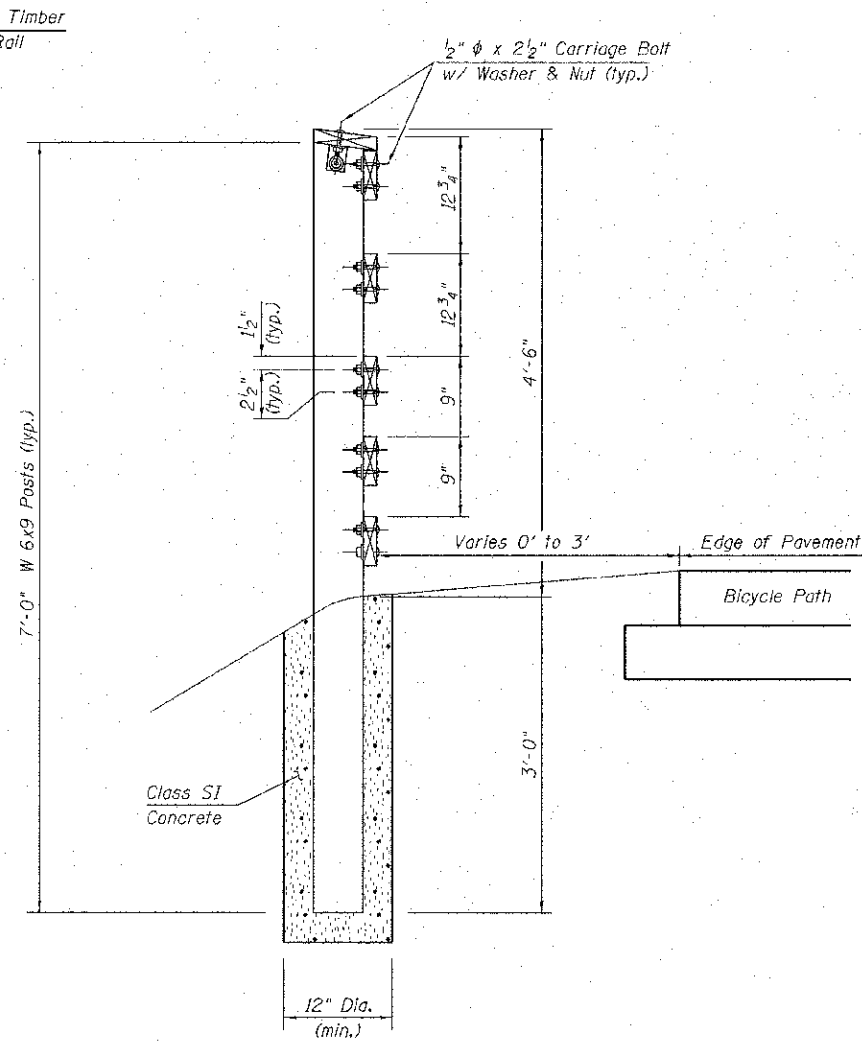
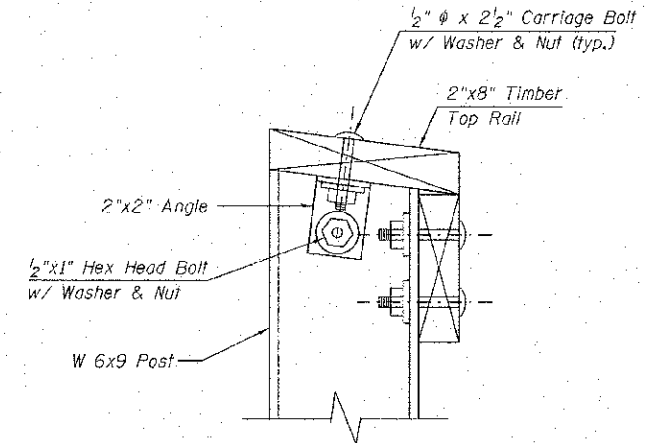


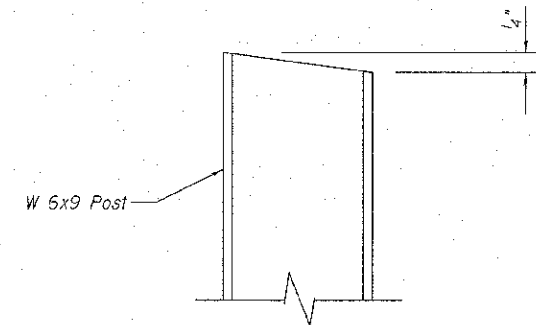
**ELEVATION VIEW**



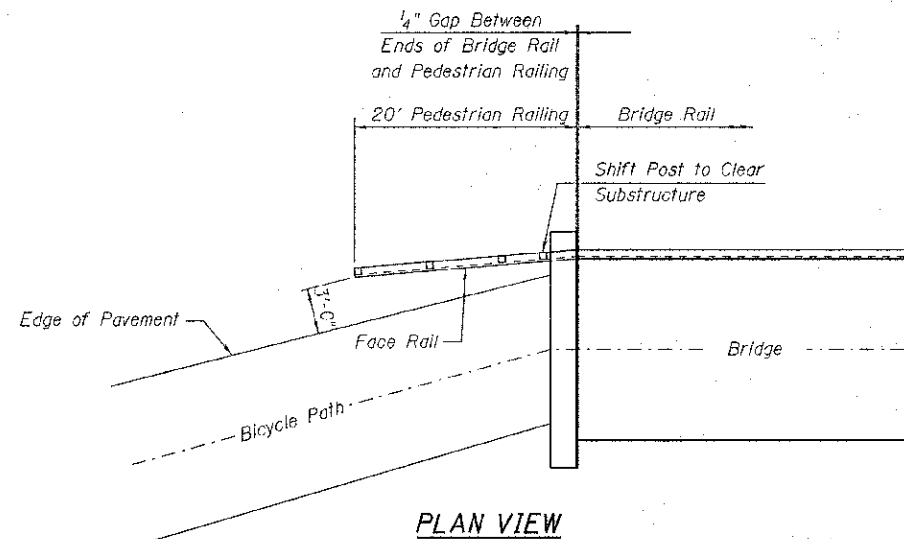
**SECTION A-A**



**TOP RAIL CONNECTION DETAIL**



**TOP OF POST DETAIL**



**PLAN VIEW**

**NOTES**

1. Steel posts shall be as specified in Article 1006.23
2. All hardware shall be as specified in Article 1006.25
3. Timber Rails shall be Treated Southern Pine as specified in Article 1007.03
4. Stagger alternating Butt Ends on Face Rail and Top Rail. Center all Butt End Joints on the Posts.
5. Cut ends of Top Rail and Face Rails to match Bridge Rail.
6. Steel Posts, Timber Rails, Concrete for Posts, and hardware shall be included in PEDESTRIAN RAILING.

**BILL OF MATERIAL**

Item	Unit	Quantity
Pedestrian Railing	Foot	80

FILE NAME = 0403084-xxxx-015-Bridge Approach Railing.dgn  
 MODEL =  
 PLOT DRIVER = VESLJ007.PDF, J1k17, 257g



USER NAME = S.Dulakis	DESIGNED -	REVISED
FILE NAME = 0403084-xxxx-015-Bridge Approach Railing.dgn	CHECKED -	REVISED
PLOT SCALE = 20:0,0000 1' = 1/4"	DRAWN -	REVISED
PLOT DATE = 4/11/2013	CHECKED -	REVISED

**STATE OF ILLINOIS  
DEPARTMENT OF TRANSPORTATION**

**BRIDGE APPROACH RAILING  
STRUCTURE NO. 040-3084**

SHEET NO. 15 OF 16 SHEETS

TR	SECTION	COUNTY	TOTAL SHEETS	SHEET NO.
164	10-00045-00-BT	JASPER	46	30
CONTRACT NO.			ILLINOIS FED. AID PROJECT	