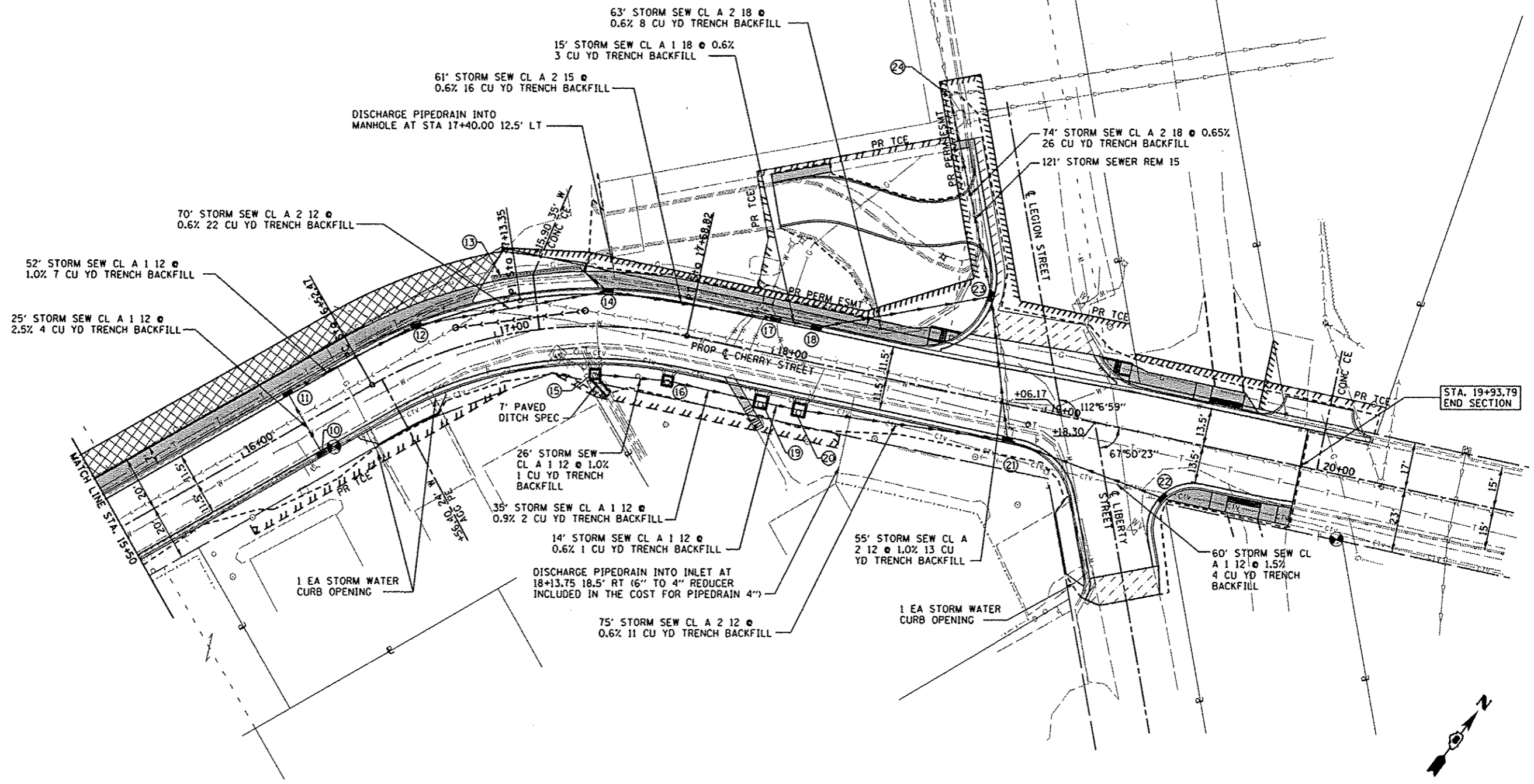


- ⑩ STA 16+25.00, 12.5' RT
INLET TA T3VF&G
EOP = 500.70
INV = 497.08
- ⑪ STA 16+25.00, 12.5' LT
INLET TB T3VF&G
EOP = 500.74
INV = 496.45
- ⑫ STA 16+75.00, 12.5' LT
MH TA 4 DIA T3VF&G
EOP = 498.79
INV(N) = 492.77
INV(S) = 495.93
- ⑬ STA 17+17.00, 20' LT
1 EA TRENCH DRAIN
1 CU YD TRENCH BACKFILL
MATCH PCC DRIVEWAY PAVT
SEE TRENCH DRAIN DETAIL
- ⑭ STA 17+40.00, 12.5' LT
MH TA 4' DIA T3VF&G
EOP = 497.19
INV = 492.35
- ⑮ STA 17+36.00, 16.0' RT
INLET SPL NI
EOP = 496.90
INV = 493.90
- ⑯ STA 17+65.00, 17.5' RT
INLET SPL NI
EOP = 496.64
INV = 493.64
- ⑰ STA 17+98.75, 12.5' LT
INLET TB T3F&G
EOP = 496.51
INV = 491.98
- ⑱ STA 18+13.75 (SAG), 12.5' LT
INLET TB T3F&G
EOP = 496.47
INV = 491.89

- ⑲ STA 17+99.75, 18.5' RT
INLET SPL N2
EOP = 496.51
INV = 493.34
- ⑳ STA 18+13.75, 18.5' RT
INLET SPL N2
EOP = 496.47
INV = 493.26
- ㉑ STA 18+89.00, 16' RT
MH TA 4 DIA T3FV&G
EOP = 497.29
INV(N) = 494.30
INV(S&W) = 492.81
- ㉒ STA 19+47.92, 21.4' RT
INLET TA T3VF&G
EOP = 498.69
INV = 495.17
- ㉓ STA 18+72.43, 36.4' LT
MH TA 4 DIA T3VF&G
EOP = 496.73
INV(S&W) = 491.51
INV(E) = 492.26
- ㉔ STA 18+42.71, 103.6' LT
EX MH T1F CL
TOP = 496.82
INV = 491.02



FILE NAME * 0828012-shd-drain.dgn	USER NAME * default PLOT TIME * 2:19:00 PM PLOT SCALE * 48,0000 ' / IN. PLOT DATE * 3/26/2013	DESIGNED - DRAWN - CHECKED - DATE -	REVISED - REVISED - REVISED - REVISED -	STATE OF ILLINOIS DEPARTMENT OF TRANSPORTATION	DRAINAGE PLAN SCALE: 1" = 20' SHEET 2 OF 2 SHEETS STA. 15+50.00 TO STA. 20+00.00	F.A.U. RTE. 9308	SECTION 08-00046-00-PV	COUNTY MONROE	TOTAL SHEETS 37	SHEET NO. 17	CONTRACT NO. 97518 ILLINOIS FED. AID PROJECT
--------------------------------------	--	--	--	---	--	---------------------	---------------------------	------------------	--------------------	-----------------	---