

PROP. CURVE PR. TR156-2
 PI STA. = 15+78.26
 $\Delta = 8^{\circ} 00' 00''$ (LT)
 $D = 3^{\circ} 10' 59''$
 $R = 1,800.00'$
 $T = 125.87'$
 $L = 251.33'$
 $E = 4.40'$
 $e = 3.34\%$
 $T.R. = 40^{\circ}$
 $S.E. RUN = 67'$
 $P.C. STA. = 14+52.39$
 $P.T. STA. = 17+03.72$

CLARENCE J. AND
 CYNTHIA L. KACHUBA

MICHAEL & REBECCA BETTS

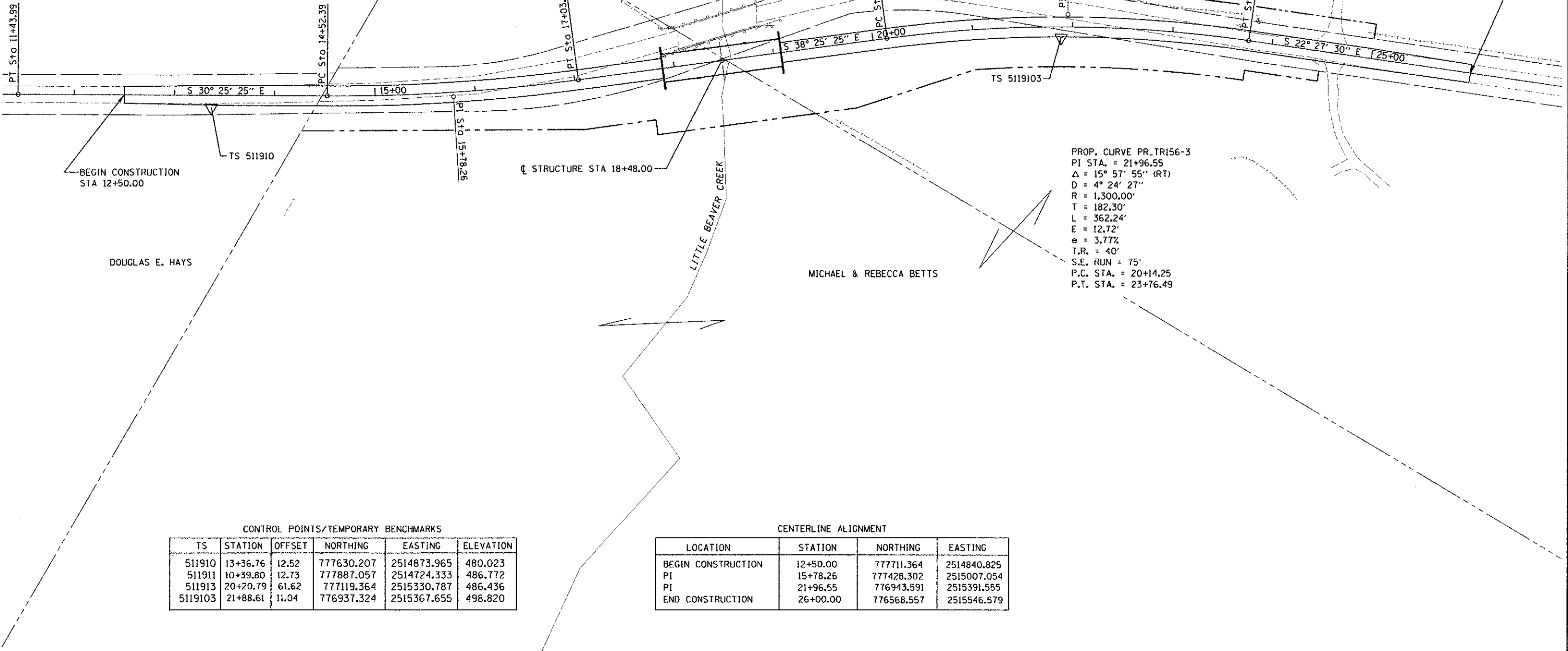
CATHY ELLER

PROP. CURVE PR. TR156-3
 PI STA. = 21+96.55
 $\Delta = 15^{\circ} 57' 55''$ (RT)
 $D = 4^{\circ} 24' 27''$
 $R = 1,300.00'$
 $T = 182.30'$
 $L = 362.24'$
 $E = 12.72'$
 $e = 3.77\%$
 $T.R. = 40^{\circ}$
 $S.E. RUN = 75'$
 $P.C. STA. = 20+14.25$
 $P.T. STA. = 23+76.49$

MICHAEL & REBECCA BETTS

DOUGLAS E. HAYS

LITTLE BEAVER CREEK



CONTROL POINTS/TEMPORARY BENCHMARKS

TS	STATION	OFFSET	NORTHING	EASTING	ELEVATION
511910	13+36.76	12.52	777630.207	2514873.965	480.023
511911	10+39.80	12.73	777887.057	2514724.333	486.772
511913	20+20.79	61.62	777119.364	2515330.787	486.436
5119103	21+88.61	11.04	776937.324	2515367.655	498.820

CENTERLINE ALIGNMENT

LOCATION	STATION	NORTHING	EASTING
BEGIN CONSTRUCTION	12+50.00	777711.364	2514840.825
PI	15+78.26	777428.302	2515007.054
PI	21+96.55	776943.591	2515391.555
END CONSTRUCTION	26+00.00	776568.557	2515546.579