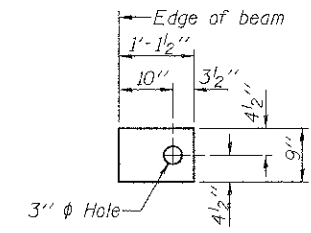


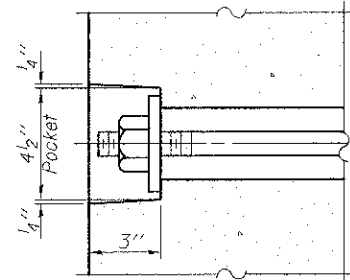
FABRIC BEARING PAD
(Interior)



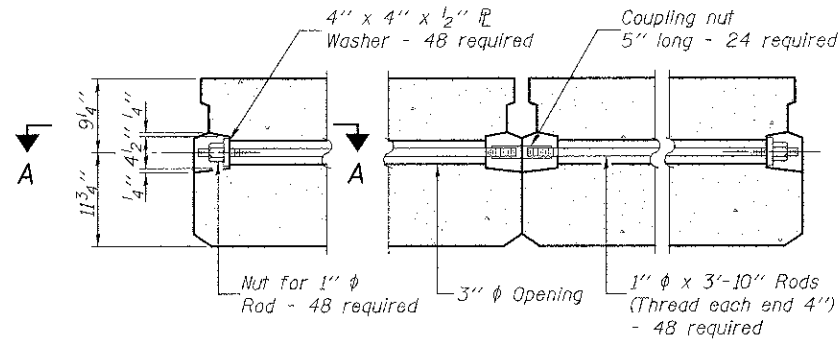
FABRIC BEARING PAD
(Exterior)

FIXED

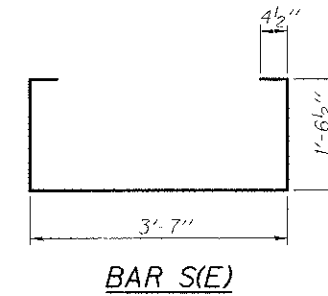
Notes:
All bearing pads shall be 1" thick.
Omit holes when using expansion bearings.
Expansion bearing pad shall be bonded to the substructure.



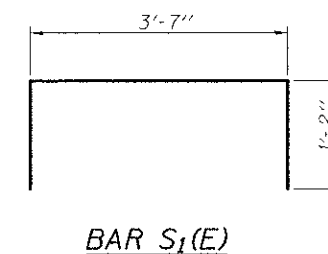
SECTION A-A



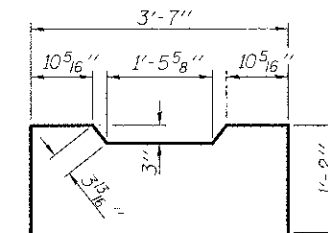
TYPICAL TRANSVERSE TIE ASSEMBLY



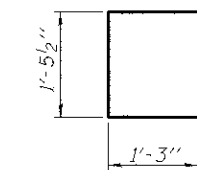
BAR S(E)



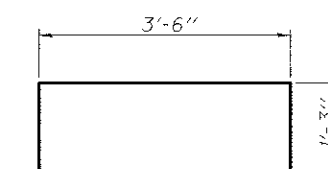
BAR S₁(E)



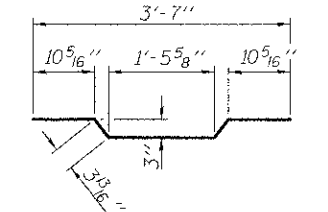
BAR S₂(E)



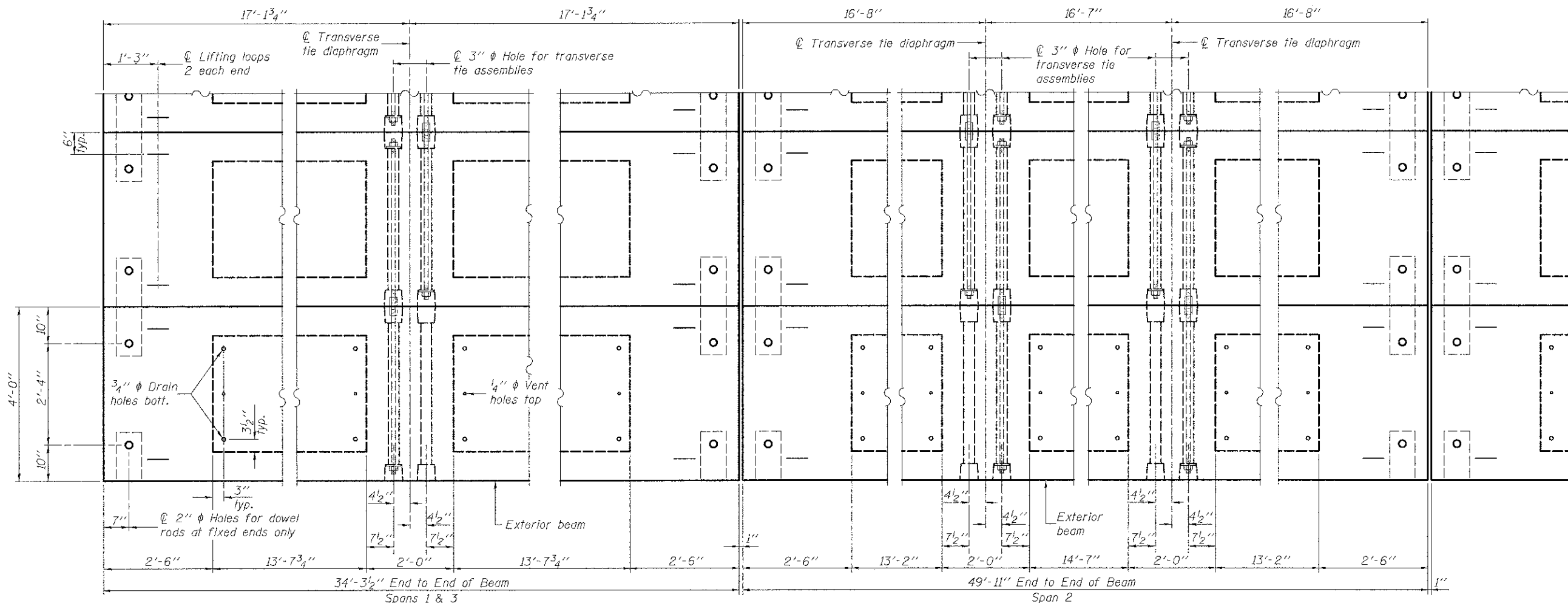
BAR U(E)



BAR U₁(E)



BAR A₁(E)

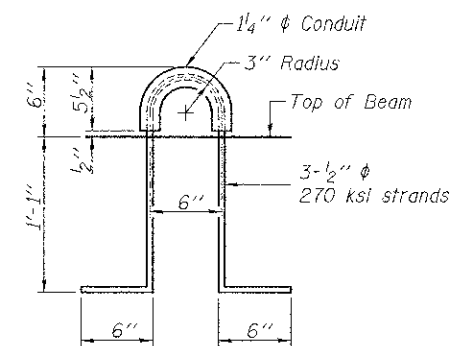


PLAN VIEW

NOTES

Prestressing steel shall be uncoated high strength, low relaxation 7-wire strand, Grade 270. The nominal diameter shall be 1/2" and the nominal cross-sectional area shall be 0.153 sq. in. The 1" rods in the transverse tie assembly shall be tightened to a snug fit and the threads set. Pockets on exterior faces of bridge shall be grout after transverse tie assembly is in place.
Reinforcement bars shall conform to ASTM A 706, Grade 60.
Two 1/8" fabric adjusting shims of the dimensions of the exterior bearing pad shall be provided for each bearing pad location.
A minimum 2 1/2" lifting pin shall be used to engage the lifting loops during handling.
Corrosion Inhibitor, per Article 1020.05(b)(12) and 1021.07 of the Standard Specifications, shall be used in the concrete for precast prestressed concrete deck beams.
Compressive strength of prestressed concrete, f'c, shall be 6000 psi.
Compressive strength of prestressed concrete at release, f'ci, shall be 5000 psi.

Note: Connect beams in pairs with the transverse tie configuration shown.



LIFTING LOOP DETAIL

BILL OF MATERIAL

Precast Prestressed Conc. Deck Bms. (21" depth)	Sq. Ft.	3,318
---	---------	-------

PD-2148-OD

7-1-10

FILE NAME: 4650197-17 bmdt.05.0117.dwg
PLOT SCALE: 1/8" = 1'-0"
PLOT DATE: 4/3/2013

USER NAME: USERDESCR.
DESIGNED: K.M.M.
DRAWN: K.H.L.
CHECKED: L.D.G.
DATE:

REVISED: .
REVISED: .
REVISED: .
REVISED: .

DESIGNED: K.M.M.
DRAWN: K.H.L.
CHECKED: L.D.G.
DATE:

STATE OF ILLINOIS
DEPARTMENT OF TRANSPORTATION

21" x 48" PPC DECK BEAM DETAILS

SCALE: SHEET NO. 5 OF 10 SHEETS STA. TO STA.

TR	SECTION	COUNTY	TOTAL SHEETS	SHEET NO.
156	02-04116-00-BR	BOND	28	17
SN 003-3414		CONTRACT NO. 97521		
ILLINOIS FED. AID PROJECT				