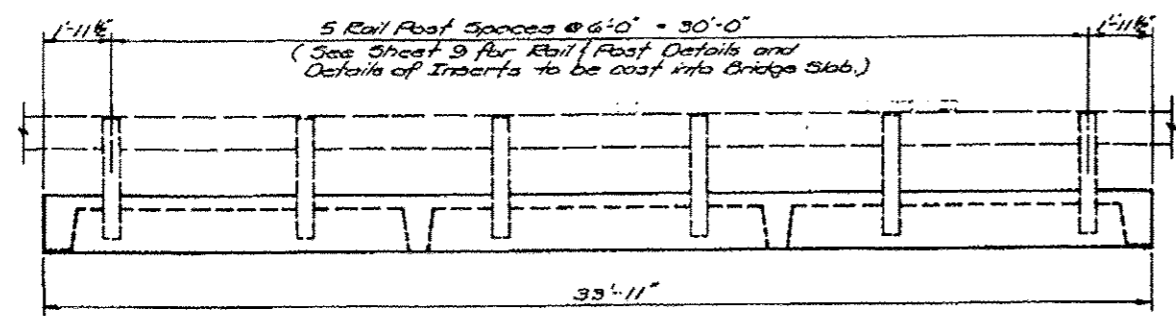
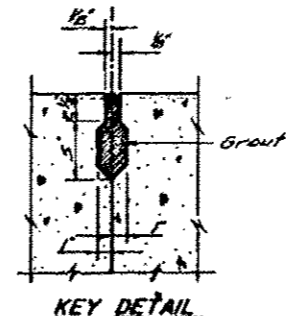


ROUTE NO.	SECTION	COUNTY	TOTAL SHEETS	SHEET NO.
VALMEYER ROAD	78-00023-00-BR	MONROE	11	8

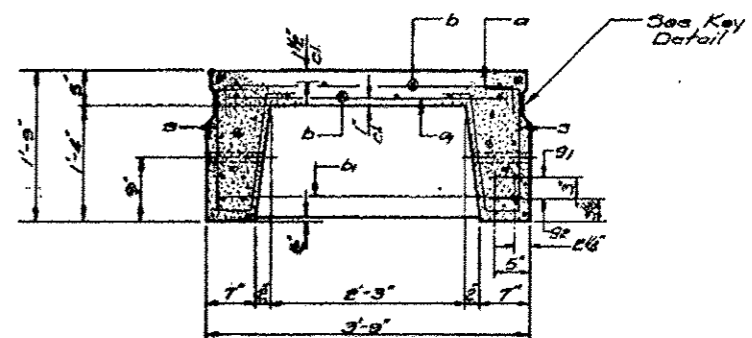


ELEVATION EXTERIOR BEAM



KEY DETAIL

Note: Omit shear key on exterior face of exterior beam.



TYPICAL SECTION

PRECAST NOTES

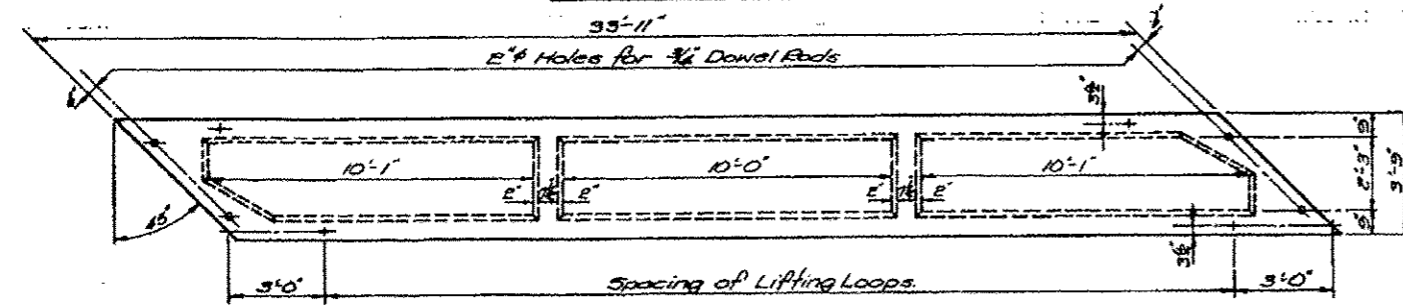
This work shall be done and paid for in accordance with Section 505 of the Standard Specifications effective July 1, 1976. In case of conflict these notes shall take precedence.

All transverse tie assemblies (nuts, bolts and washers) shall be hot dipped galvanized in accordance with A.R.S.H.T.A. Designation M-232.

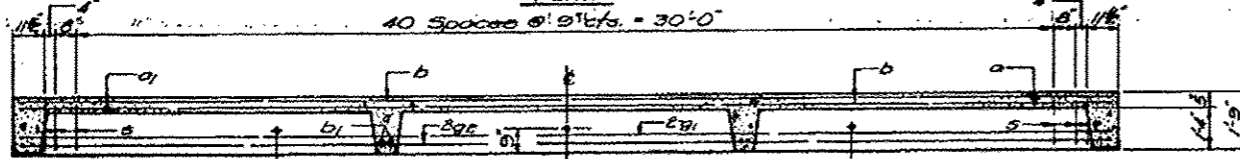
Unless otherwise approved by the Engineer, lifting loops shall be 7/16" # non-galvanized high strength stress relieved wire strands. Loops shall be burned off after slab/cap have been erected.

Cost of reinforcement and accessories cast into slab unit, of bearing pads, furnishing, drilling for, placing and grouting anchor dowels, of furnishing and assembling of 1" bolts and of grouting longitudinal shear key is included in Unit bid price for "Precast Concrete Bridge Slab".

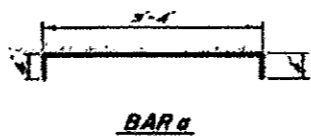
Track welding of stirrups to the bottom longitudinal reinforcement bars will not be permitted except as otherwise authorized in writing by the Engineer.



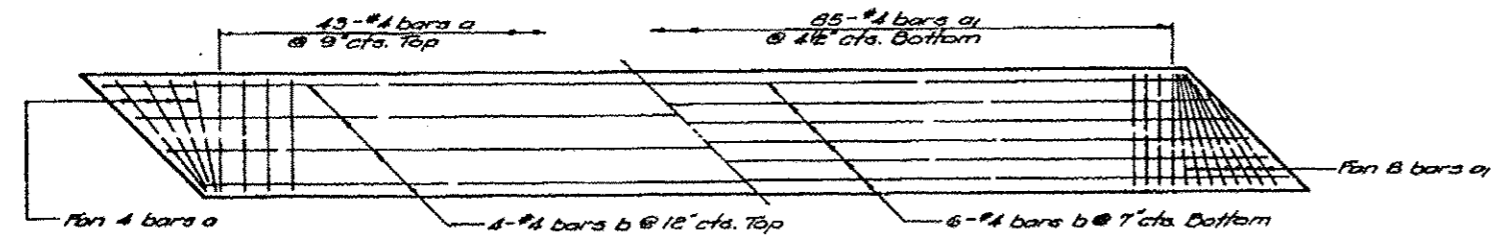
PLAN



LONGITUDINAL SECTION



BAR a

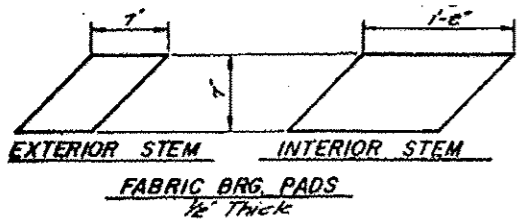


SLAB REINFORCEMENT

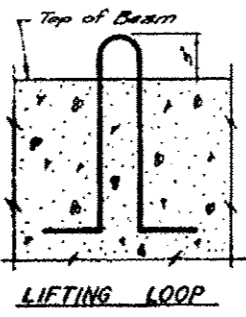
BILL OF MATERIAL - FOR ONE BEAM

DESIGN STRESSES
 $f_c = 4,500$ p.s.i.
 $f_s = 1,800$ p.s.i.
 $f_s = 20,000$ p.s.i.
 $n = 8$
 LOADINGS HS 20-44

Bar	Size	Length	No.	Weight
a	#4	4'-0"	49	115
a ₁	#4	3'-3"	87	189
b	#4	33'-6"	10	224
b ₁	#4	3'-6"	8	19
g ₁	#10	33'-6"	4	577
g ₂	#11	33'-6"	4	712
g	#3	3'-10"	90	130
Class II Concrete Cu ₁₀₀				4.6
Reinforcement Bars				Lbs. 1,906
Total Weight				Lbs. 18,630



FABRIC BRG. PADS
1/2" THICK



LIFTING LOOP

DESIGNED: K.L.F.
 CHECKED:
 DRAWN: R.A.W.
 CHECKED: K.L.F.

DETAILS
 PRECAST CONCRETE BRIDGE SLAB
 VALMEYER ROAD OVER CARR CREEK
 SECTION 78-00023-01-BR
 CITY OF COLUMBIA

FILE NAME: P:\120613\1-CADD - D:\V\4\3\ST-1857682-97524-889-Existing Plans (Sheet 8).dgn

THOUVENOT, WADE & MOERCHEN, INC.

 SWANSEA - WATERLOO - EDWARDSVILLE - ST. LOUIS - ST. CHARLES

USER NAME: n.jook	DESIGNED: -	REVISED: -
FLDT SCALE: 0/2,0000 1/16"	CHECKED: -	REVISED: -
PLDT DATE: 3/12/2013	DRAWN: -	REVISED: -
	CHECKED: -	REVISED: -

STATE OF ILLINOIS
 DEPARTMENT OF TRANSPORTATION

EXISTING BRIDGE PLANS - FOR INFORMATION ONLY
 STRUCTURE NO. 067-6002
 SHEET NO. 9 OF 12 SHEETS

F.A.U. RTE.	SECTION	COUNTY	TOTAL SHEETS	SHEET NO.
9304	12-00023-01-BR	MONROE	16	13
ROAD DIST. NO. ILLINOIS FED. AID PROJECT			CONTRACT NO. 97524	

H.M. 16. AG. 1713