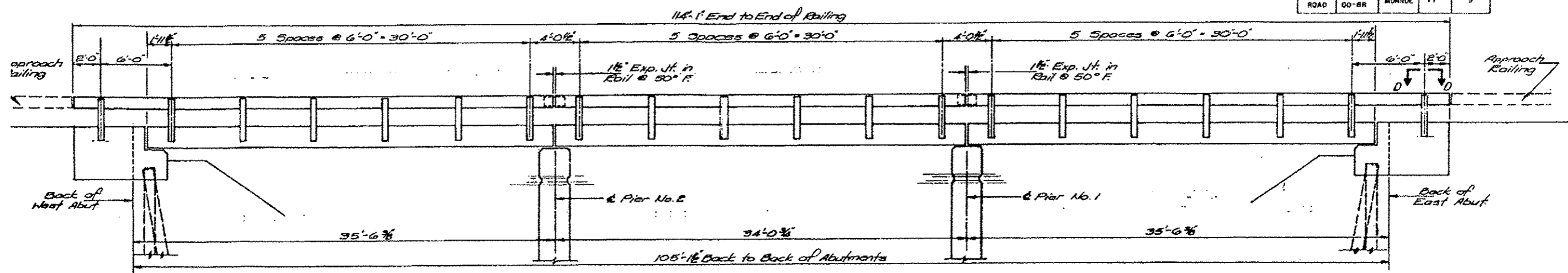
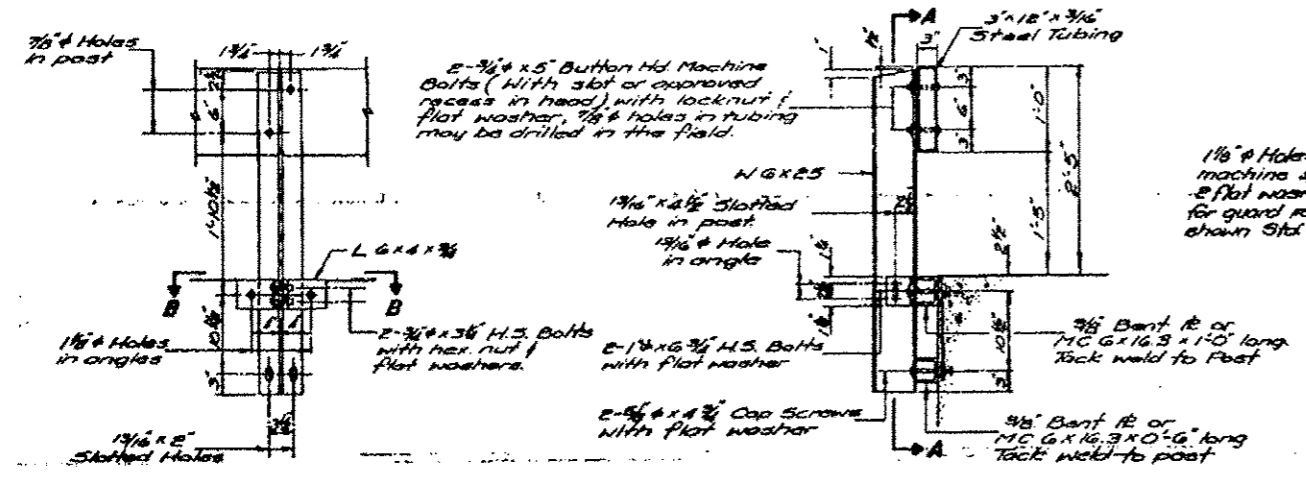


ROUTE NO.	SECTION	COUNTY	TOTAL SHEETS	SHEET NO.
VALMEYER ROAD	78-00023-00-BR	MONROE	11	9

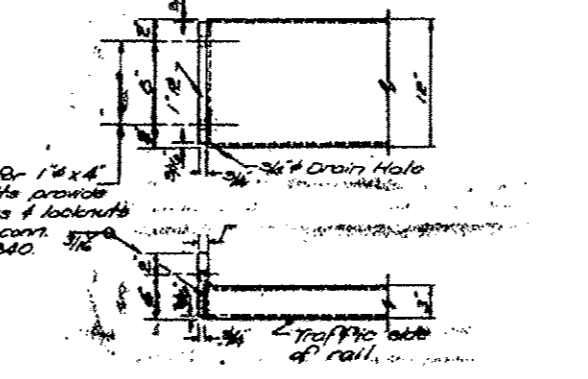


ELEVATION



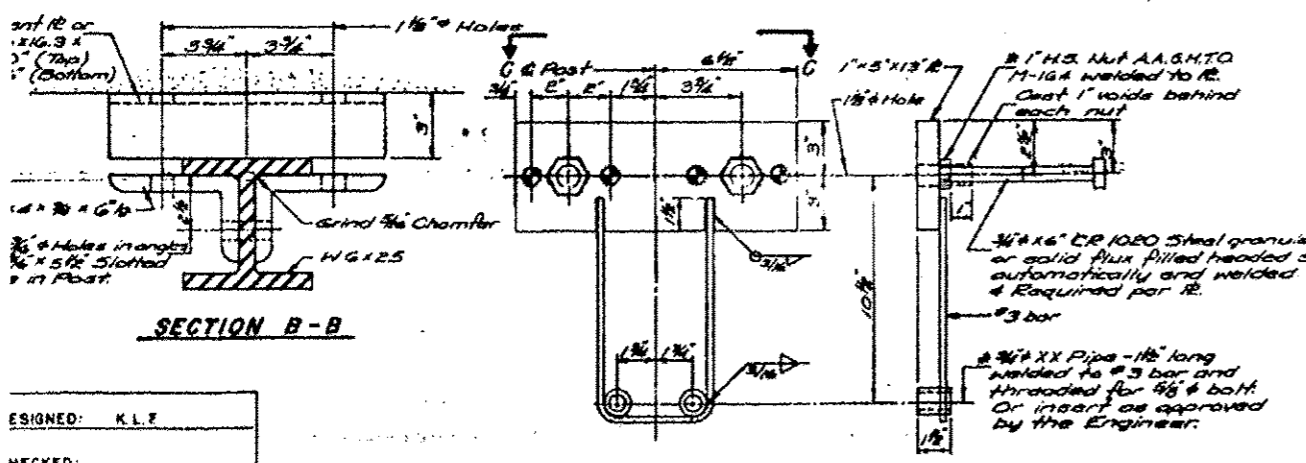
SECTION A-A

SECTION AT RAIL POST



END OF RAIL DETAIL

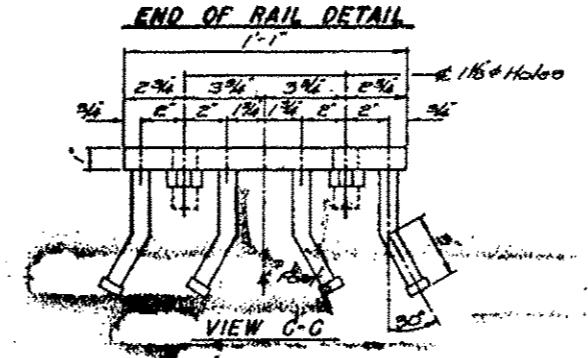
VIEW C-C



SECTION B-B

ANCHOR DEVICE

* Threaded rods shall be plugged or blocked off during casting of beam.



SECTION AT RAIL SPLICE

NOTES

Hollow structural steel tubing shall conform to the requirements of A.S.T.M. designation A-500 Grade B or A-501 Structural Steel Tubing.

All other steel shapes and plates shall conform to the requirements of A.S.T.M. designation M-183 except posts shall conform to A.A.S.H.T.O. M22, G. 50.

Bolts, cap screws, and nuts shall conform to the requirements of A.S.T.M. designation A-307 except for high strength bolts, nuts and washers noted which shall conform to A.S.T.M. designation M-164.

All bolts, nuts, cap screws, washers and lock washers shall be galvanized in accordance with A.S.T.M. designation M-252.

All posts, railing, rail splices, anchor devices and angles shall be galvanized after shop fabrication in accordance with A.S.T.M. designation M-11 and 1.574 A305 Galvanized rail shall not be painted.

Railing shall be in accordance with Section 508 of the Standard Specifications, except as noted, and shall be paid for at the contract unit price per linear foot for STEEL RAILING, TYPE 5.

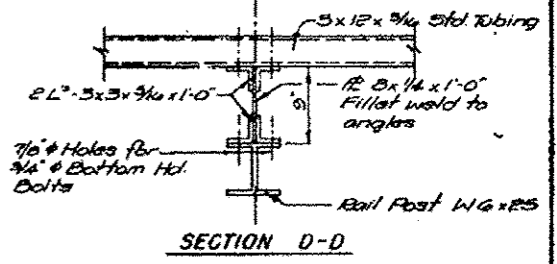
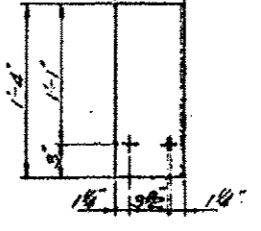
All field drilled holes shall be coated with an approved zinc rich paint before erection.

The lower portion of the post mounting assembly in contact with concrete shall receive two coats of asphalt paint conforming to Section 714.08 Type B or above 1/2" fabric bearing pad between the mounting assembly and concrete.

3/4" high strength bolts used to connect the 6" x 4" x 3/4" angles to the posts shall be tightened in accordance with Article 507.04(9) of the Standard Specifications. The 1" high strength bolts connecting the angles to the concrete shall be tightened to a snug fit and given an additional 1/8 turn.

For multi-span bridges sufficient 1/2" x 6" x 1'-4" galvanized steel shims shall be provided to align rail between adjacent spans. Cost incidental to STEEL RAILING.

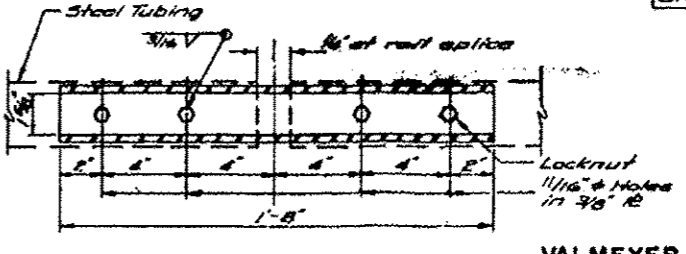
1/4" STEEL SHIMS



SECTION D-D

BILL OF MATERIAL

Item	Unit	Quantity
Steel Railing, Type 5	Lin. Ft.	228



PLAN - BOTT. SPLICE & TYPICAL

RAILING
VALMEYER ROAD OVER CARR CREEK
SECTION 78-00023-00-BR
CITY OF COLUMBIA

FILE NAME: P:\128613\4-C600 - DWG\4-3-ST\8576802-97524-01B-Existing Plans Sheet 9.dgn

DESIGNED:	K.L.F.
CHECKED:	
RAWN:	R.A.W.
CHECKED:	K.L.F.



USER NAME:	mjoost	DESIGNED:		REVISED:	
PLOT SCALE:	0:12.0000 1" = 12'-0"	CHECKED:		REVISED:	
PLOT DATE:	3/12/2013	DRAWN:		REVISED:	
		CHECKED:		REVISED:	

STATE OF ILLINOIS
DEPARTMENT OF TRANSPORTATION

EXISTING BRIDGE PLANS - FOR INFORMATION ONLY
STRUCTURE NO. 067-6002

F.A.U. RTE.	SECTION	COUNTY	TOTAL SHEETS	SHEET NO.
9304	12-00023-01-BR	MONROE	16	14
ROAD DIST. NO.			ILLINOIS FED. AID PROJECT	

SHEET NO. 10 OF 12 SHEETS