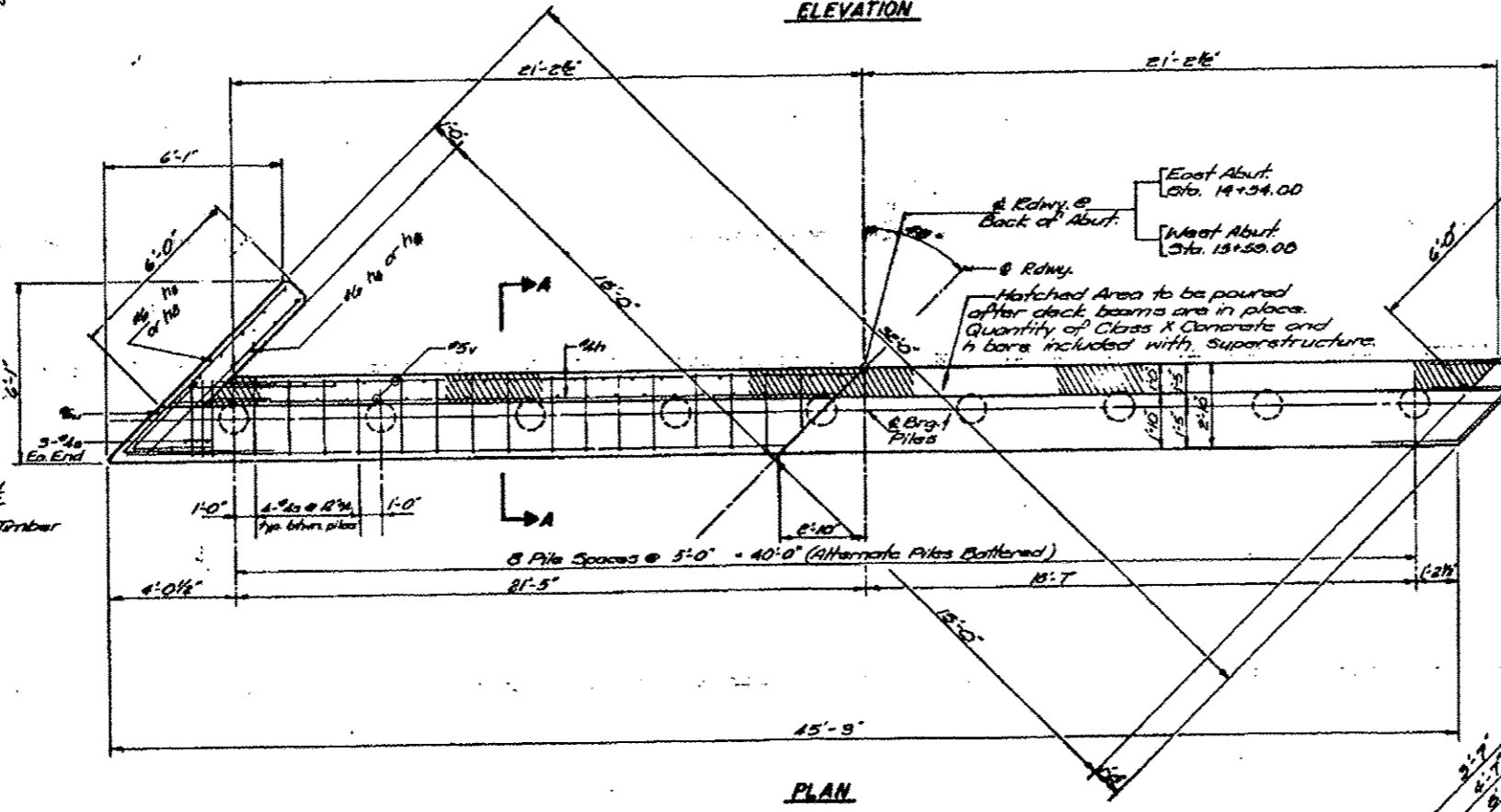
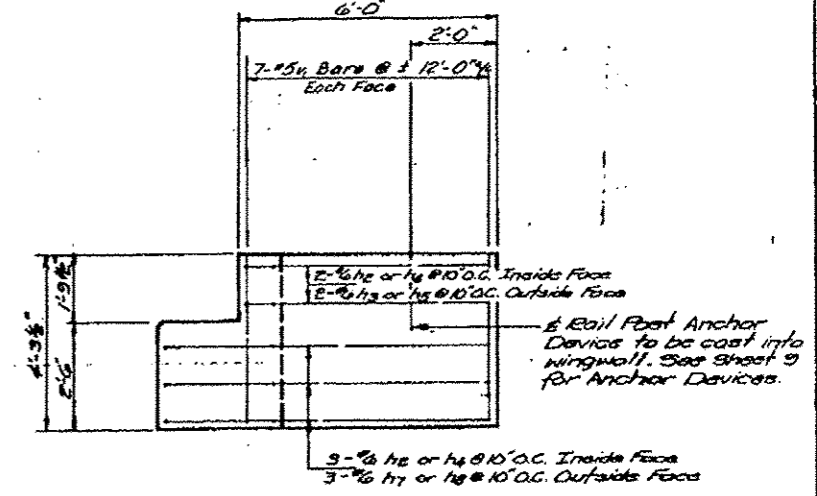
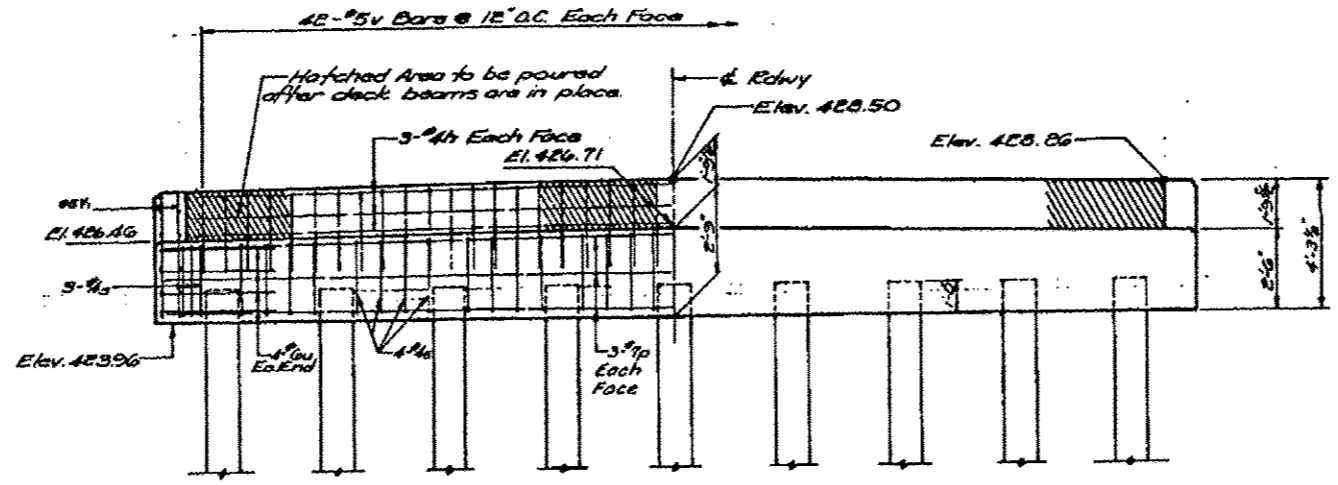
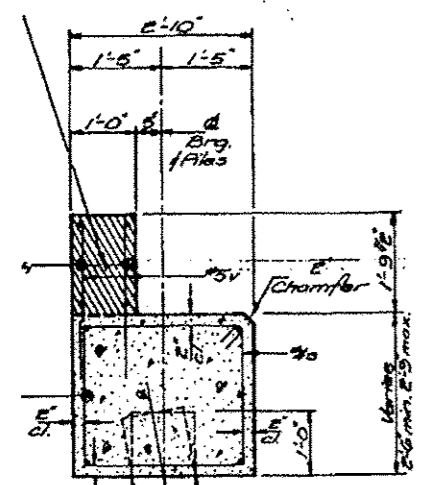


| ROUTE NO. | SECTION | COUNTY | TOTAL SHEETS | SHEET NO. |
|---------------|----------------|--------|--------------|-----------|
| WALMEYER ROAD | 78-00023-00-BR | MONROE | 11 | 11 |

**TABLE OF REINFORCEMENT
BAR SPLICE LENGTHS**

| Bar | Splice Length |
|-----|---------------|
| p | 3'-4" |
| h | 1'-0" |

Hatched Area to be poured after deck beams are in place. Quantity of Class X Concrete and h bars included with superstructure.



**EAST & WEST ABUTTS.
BILL OF MATERIAL**

| Bar | No. | Size | Length | Shape |
|-----|-----|------|--------|-------|
| h2 | 10 | #6 | 7'-1" | └ |
| h3 | 4 | #6 | 7'-2" | └ |
| h4 | 10 | #6 | 6'-1" | └ |
| h5 | 4 | #6 | 7'-1" | └ |
| h7 | 6 | #6 | 5'-9" | └ |
| h9 | 6 | #6 | 10'-9" | └ |
| S | 76 | #4 | 10'-2" | □ |
| U | 16 | #6 | 13'-4" | └ |
| V | 168 | #5 | 2'-9" | └ |
| VI | 56 | #5 | 4'-0" | └ |
| P | 24 | #7 | 25'-2" | └ |

Class X Concrete Cu Yds 277
Reinforcement Bars 55 3250
Form Cons. Piles 201/198 - F 556
Driving Timber Piles - F 536
Test Pile, Timber Each 1
Bill of material includes quantities for East & West Abutments.

FILE DATA

| | East Abut. | West Abut. |
|----------|----------------|----------------|
| Type | Crossed Timber | Crossed Timber |
| Length | 38' | 28' |
| Capacity | 15 Tons | 15 Tons |
| Number | 8 | 8 |
| # Pile | 1 | - |

DESIGNED: K.L.F.
CHECKED: R.N.G.
DRAWN: R.A.W.
CHECKED: K.L.F.

EAST & WEST ABUTMENTS
WALMEYER ROAD OVER CARR CREEK
SECTION 78-00023-00-BR
CITY OF COLUMBIA

FILE NAME: P:\120813\1-CADD - DWG\4.3-ST\120813-01-Existing Plans (Sheet 11).dwg