

GENERAL NOTES

- UNDERGROUND UTILITIES HAVE BEEN PLOTTED FROM AVAILABLE INFORMATION AND THEREFORE THEIR LOCATION MUST BE CONSIDERED APPROXIMATE ONLY. THE VERIFICATION OF THE LOCATION OF ALL UNDERGROUND UTILITIES EITHER SHOWN OR NOT SHOWN ON THESE PLANS SHALL BE THE RESPONSIBILITY OF THE CONTRACTOR, AND SAID UTILITIES SHALL BE LOCATED PRIOR TO GRADING OR CONSTRUCTION OF IMPROVEMENTS.
- ALL MATERIALS DEEMED SALVAGEABLE BY THE ENGINEER SHALL REMAIN THE PROPERTY OF ST. CLAIR COUNTY. ALL OTHER MATERIALS SHALL BE DISPOSED OF BY THE CONTRACTOR, AT HIS OWN EXPENSE.
- THE FOLLOWING ITEMS AND ESTIMATED QUANTITIES SHALL BE USED THROUGHOUT THIS PROJECT:
0.1 ACRE, SEEDING CLASS 2; 9 POUND, NITROGEN FERTILIZER NUTRIENT; 9 POUND PHOSPHOROUS FERTILIZER NUTRIENT;
9 POUND, POTASSIUM FERTILIZER NUTRIENT; 0.1 ACRE, MULCH, METHOD 2; 17 GALLON, BITUMINOUS MATERIALS (PRIME COAT);
57 TON, HOT-MIX ASPHALT SURFACE COURSE, MIX "C", N70; 10 TON, INCIDENTAL HOT-MIX ASPHALT SURFACING.
- SEEDING DATES:
SPRING - MARCH 1 TO JUNE 1 FALL - AUGUST 1 TO NOVEMBER 15
SEEDING WILL NOT BE PERMITTED OUTSIDE THE LIMITS SHOWN ABOVE WITHOUT THE WRITTEN APPROVAL OF THE ENGINEER. FERTILIZER NUTRIENTS SHALL BE APPLIED AT THE RATE OF 270 POUNDS PER ACRE. THE PERCENT OF THE TOTAL WEIGHT OF THE READY MIX MATERIAL SHALL BE 33 1/3% NITROGEN, 33 1/3% PHOSPHORIC ACID AND 33 1/3% WATER SOLUBLE POTASH. MULCH SHALL BE APPLIED AT THE RATE OF 2 TONS PER ACRE.

5. THE FOLLOWING UTILITY COMPANIES MAY HAVE FACILITIES LOCATED WITHIN THE LIMITS OF CONSTRUCTION.

AMEREN 1050 WEST BOULEVARD BELLEVILLE, IL 62222 (618) 236-6265	AT&T 1420 FRONTAGE RD O'FALLON, IL 62289 (618) 346-7292	FRONTIER COMMUNICATIONS (309) 827-1253
---	--	---

6. THE FOLLOWING FACTORS WERE USED TO DETERMINE THE REQUIRED AMOUNT OF MATERIALS NEEDED.

BITUMINOUS MATERIALS (PRIME COAT) ON AGGREGATE BASE	0.375 GAL/SQ YD
HOT MIX ASPHALT SURFACE COURSE, MIX "C", N70	112 LBS/SQYD/IN
INCIDENTAL HOT-MIX ASPHALT SURFACING	112 LBS/SQYD/IN

FLEXIBLE PAVEMENT STRUCTURAL DESIGN INFORMATION

AVERAGE ESTIMATED ADT UPON COMPLETION (2013) = 105
ROADWAY CLASSIFICATION: RURAL MINOR COLLECTOR
PROPOSED MATERIALS:
AGGREGATE BASE COURSE, TYPE A 8"
4" INCIDENTAL HOT-MIX ASPHALT SURFACING

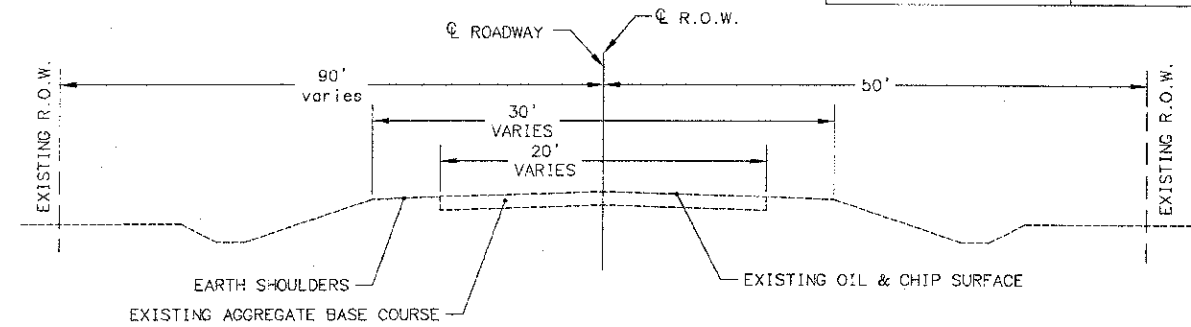
8. THE FOLLOWING MIXTURE REQUIREMENTS ARE APPLICABLE FOR THIS PROJECT.

LOCATION	BRIDGE DECK	ROAD SURFACE
MIXTURE USE	SURFACE COURSE	INCIDENTAL
AC/PG	PG 64-22	PG 64-22
RAP % (MAX)	10%	10%
DESIGN AIR VOIDS	4.0% @ Ndes=70	4.0% @ Ndes=70
MIX COMPOSITION (GRADATION MIXTURE)	IL-9.5/IL-12.5	IL-9.5/IL-12.5
FRICITION ACC.	MIXTURE C	MIXTURE C
MIXTURE WEIGHT	112.0 lb/sq yd/in	112.0 lb/sq yd/in

EARTHWORK SCHEDULE

LOCATION	EARTH EXCAVATION CUBIC YARDS	EXCAVATION ADJUSTED FOR SHRINKAGE (25%) CUBIC YARDS	EMBANKMENT CUBIC YARDS	CHANNEL EXCAVATION CUBIC YARDS	EARTHWORK BALANCE CUBIC YARDS
STA.288+19.52 - STA.289+62.47	21	16	2	351	+365

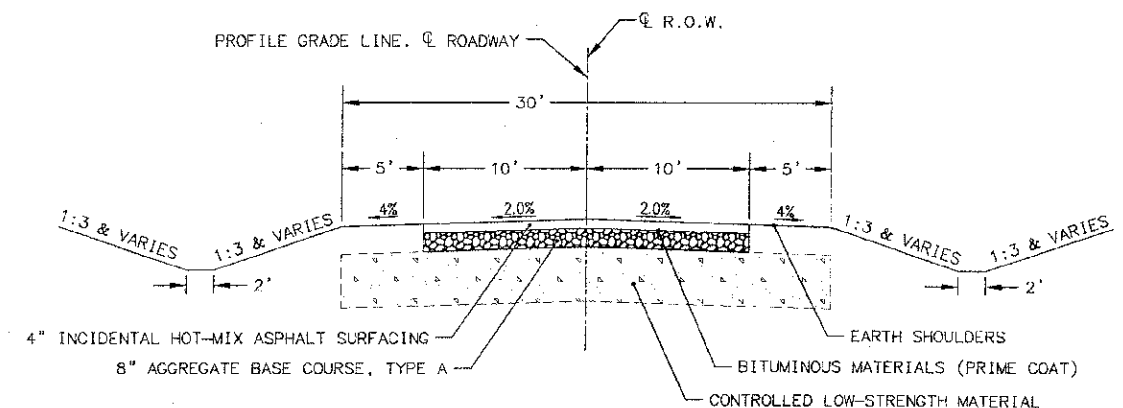
SECTION NO.	COUNTY HIGHWAY	COUNTY	SHEET OF SHEETS
08-0087-06-ER	CH 48	ST. CLAIR	2 OF 15
FHWA REG. NO. 7	ILLINOIS	PROJ: BROS-0163(031)	
GENERAL NOTES & TYP SEC	CONTRACT 97525		



EXISTING TYPICAL SECTION

STA. 288+00 TO STA. 290+00

ROW LT OF @: STA. 288+00 TO STA. 289+50 = 90.00'
ROW LT OF @: STA. 289+50 TO STA. 290+00 = 65.00'



PROPOSED TYPICAL SECTION

STA. 288+19.52 TO STA. 288+29.52 &
STA. 289+52.47 TO STA. 289+62.47

NOTE: CONTROLLED LOW-STRENGTH MATERIAL SHALL BE PLACED BEHIND THE ABUTMENTS FROM THE BOTTOM OF CAP TO 1' BELOW PROFILE GRADE. THE DIMENSIONS SHALL BE 2.5' WIDE X 41' LONG OR AS DIRECTED BY THE ENGINEER.

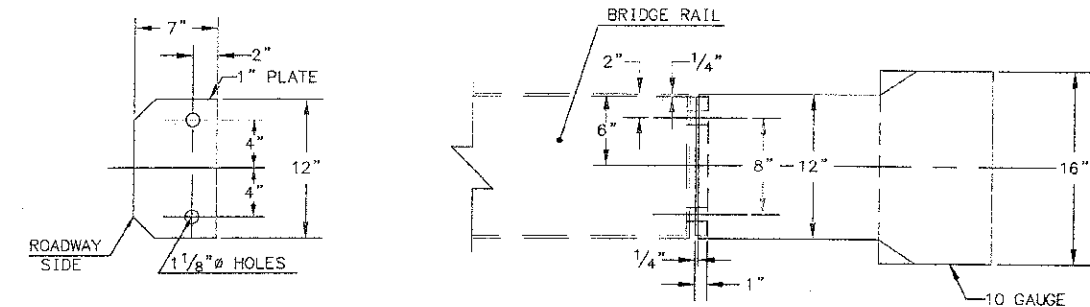
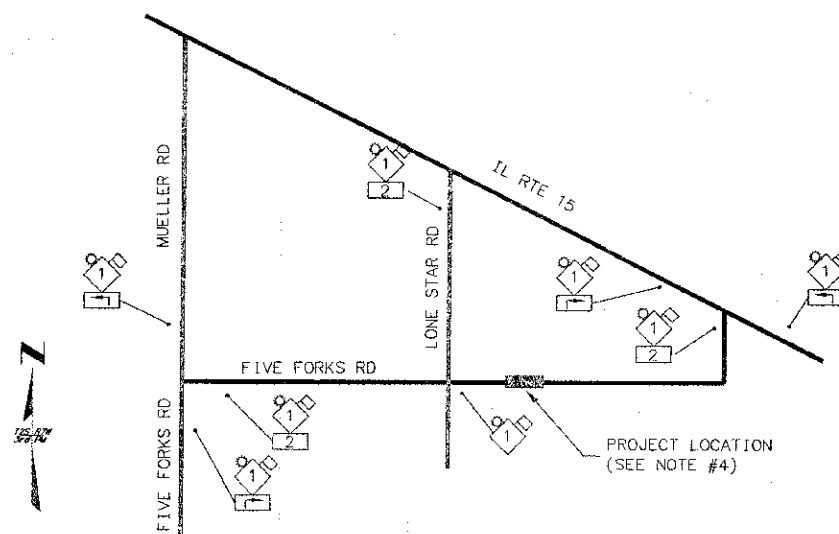
NOTES

- TYPE A FLASHING WARNING LIGHTS SHALL BE USED ON EACH ADVANCE WARNING SIGN.
- ALL ADVANCE WARNING SIGNS SHALL BE A MINIMUM OF 48" X 48" AND HAVE A BLACK LEGEND ON AN ORANGE REFLECTORIZED BACKGROUND.
- ALL TYPE III BARRICADES SHALL HAVE TWO TYPE A FLASHING WARNING LIGHTS MOUNTED ON TOP OF EACH BARRICADE.
- SEE STANDARD BLR 21 FOR TRAFFIC CONTROL DETAIL AT THE BRIDGE LOCATION.

LEGEND

- ROAD CLOSED AHEAD W20-3(0)
- SUPPLEMENTAL PLATE: 1 MILE
- SUPPLEMENTAL PLATE: ARROW

TRAFFIC CONTROL PLAN



- THE CURLLED END SECTIONS SHALL BE PLACED AT THE NE, NW, SE, AND SW CORNERS OF THE PROPOSED BRIDGE.
- THE CURLLED END SECTIONS SHALL BE CONSIDERED INCIDENTAL TO THE COST OF STEEL RAILING, TYPE S1 AND NO ADDITIONAL COMPENSATION WILL BE ALLOWED.

CURLLED END SECTION DETAILS

DRAWING FILE: general notes and typical sections.dwg
PLOT DATE: 4/13

	INITIALS	DATE
DESIGNED	WES	10/12
CHECKED		
DRAWN	WES	10/12
CHECKED		
PREPARED BY ST. CLAIR COUNTY		