

CONTRACT NO. 97526
FEDERAL AID PROJECTS

FOR UTILITY LOCATION PURPOSES, THIS PROJECT IS LOCATED IN THE SOUTH HALF OF FRACTIONAL SECTION 19, TOWNSHIP 5 NORTH, RANGE 9 WEST OF THE THIRD PRINCIPAL MERIDIAN.

AGENCIES KNOWN TO HAVE UNDERGROUND FACILITIES WITHIN THE LIMITS OF THIS IMPROVEMENT ARE SHOWN BELOW (MEMBERS OF JULIE, PHONE (800) 892-0123, ARE INDICATED BY *).

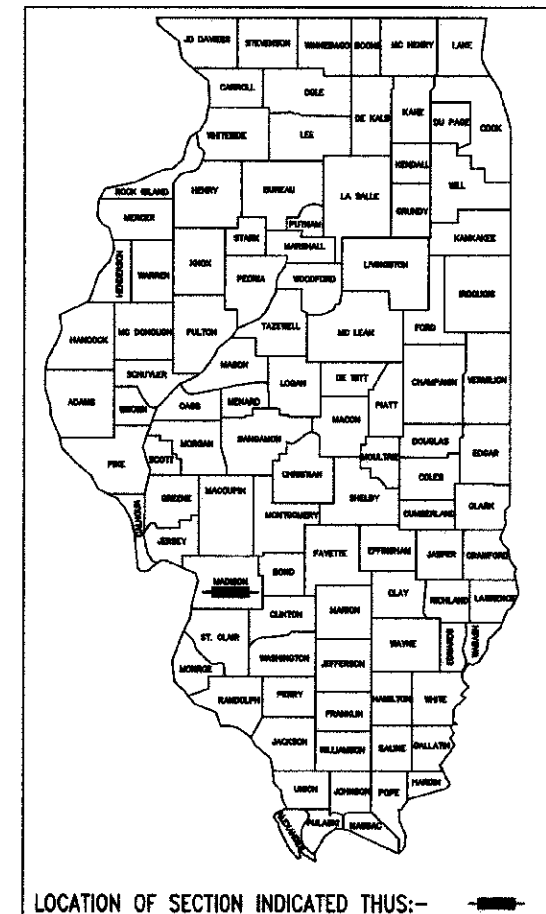
- | | |
|---|--|
| * CHARTER COMMUNICATIONS
4767 SIGNATURE INDUSTRIAL DRIVE
EDWARDSVILLE, IL 62025
(618) 307-5730 | * WOOD RIVER PUBLIC SERVICES
501 WEST FERGUSON AVENUE
WOOD RIVER, IL 62095
(618) 251-3122
WATER, STORM SEWER, & SANITARY SEWER |
| * AT&T COMMUNICATIONS
203 GOETHE
COLLINGSVILLE, IL 62234
(618) 346-6400 | * AMEREN ILLINOIS
2800 N. CENTER STREET
MARYVILLE, IL 62062
(618) 346-1244 (GAS) |
| * AMEREN ILLINOIS
700 OAKWOOD AVENUE
P.O. BOX 478
ALTON, IL 62002
(800) 325-7002 (ELECTRIC) | |

STATE OF ILLINOIS DEPARTMENT OF TRANSPORTATION DIVISION OF HIGHWAYS FEDERAL AID HIGHWAY FERGUSON AVE. RESURFACING F.A.U. 8971 (FERGUSON AVE.)

SECTION 10-00047-02-RS
FEDERAL PROJECT NO. M-5011(335)
CITY OF WOOD RIVER
MADISON COUNTY
JOB C-98-340-11

INDEX TO SHEETS

- 1 COVER SHEET
- 2 SUMMARY OF QUANTITIES, GENERAL NOTES, LEGEND & CONTROL POINTS
- 3 EXISTING TYPICAL SECTIONS
- 4-5 PROPOSED TYPICAL SECTIONS
- 6 SCHEDULES
- 7-12 PLAN
- 13-18 REMOVAL PLAN
- 19 STORM SEWER PLAN
- 20-41 INTERSECTION DETAILS
- 42-43 PAVEMENT MARKING PLAN
- 44-45 DETAILS OF CONSTRUCTION



PROJECT ENDS STA. 49+02.50

PROJECT BEGINS STA. 9+70

OMISSION STA. 34+73 TO 43+67

LOCATION MAP

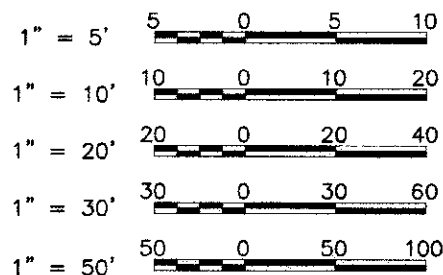
NOT TO SCALE

GROSS LENGTH OF PROJECT = 3,932.50' (0.745 MILES)
OMISSION = 894.00' (0.169 MILES)
NET LENGTH OF PROJECT = 3,038.50' (0.576 MILES)

HIGHWAY STANDARDS

SEE SHEET NO. 2

SCALES

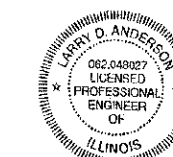


FULL SIZE PLANS HAVE BEEN PREPARED USING STANDARD ENGINEERING SCALES. REDUCED SIZED PLANS WILL NOT CONFORM TO STANDARD SCALES. IN MAKING MEASUREMENTS ON REDUCED PLANS THE ABOVE SCALES MAY BE USED.

2012 ADT = 3,200 % TRUCKS = 1
FUNCTIONAL CLASSIFICATION: MINOR ARTERIAL
DESIGN SPEED = 35 M.P.H.

STATE OF ILLINOIS DEPARTMENT OF TRANSPORTATION - DIVISION OF HIGHWAYS	
APPROVED: <i>4-10-13</i>	20
<i>FLC 6/15</i> CITY OF WOOD RIVER, MAYOR	
PASSED: <i>April 23</i>	20 <i>13</i>
<i>J. Mah...</i> DISTRICT 8 ENGINEER OF LOCAL ROADS & STREETS	
APPROVED: <i>April 23</i>	20 <i>13</i>
<i>Jeffrey E. Kiern</i> JEFFREY E. KIERN, P.E. ACTING DEPUTY DIRECTOR OF HIGHWAYS REGION FIVE ENGINEER	
STATE OF ILLINOIS DEPARTMENT OF TRANSPORTATION	

PRINTED BY THE AUTHORITY OF
THE STATE OF ILLINOIS



Larry D. Anderson

DATE SIGNED *4/10/2013*
EXPIRATION DATE *4/30/13*

SMS Sheppard, Morgan & Schwaab, Inc.
ENGINEERS CONSULTING ENGINEERS AND LAND SURVEYORS
215 Market Street, P.O. Box E, Alton, IL 62002 618/462-9755 E-mail: mail@smsengineers.com
10 Central Industrial Drive, Granite City, IL 62040 618/877-8700 E-mail: mail@smsengineers.com