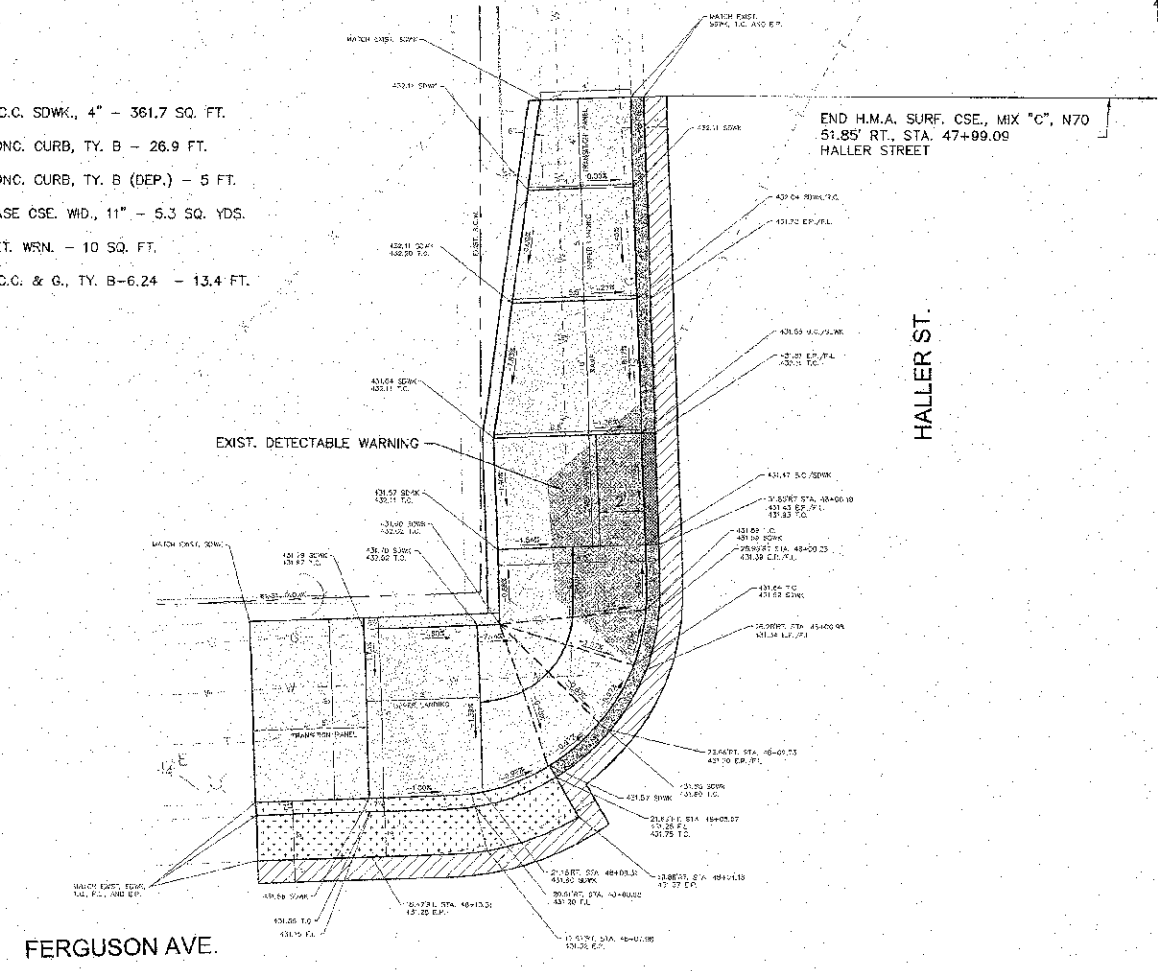


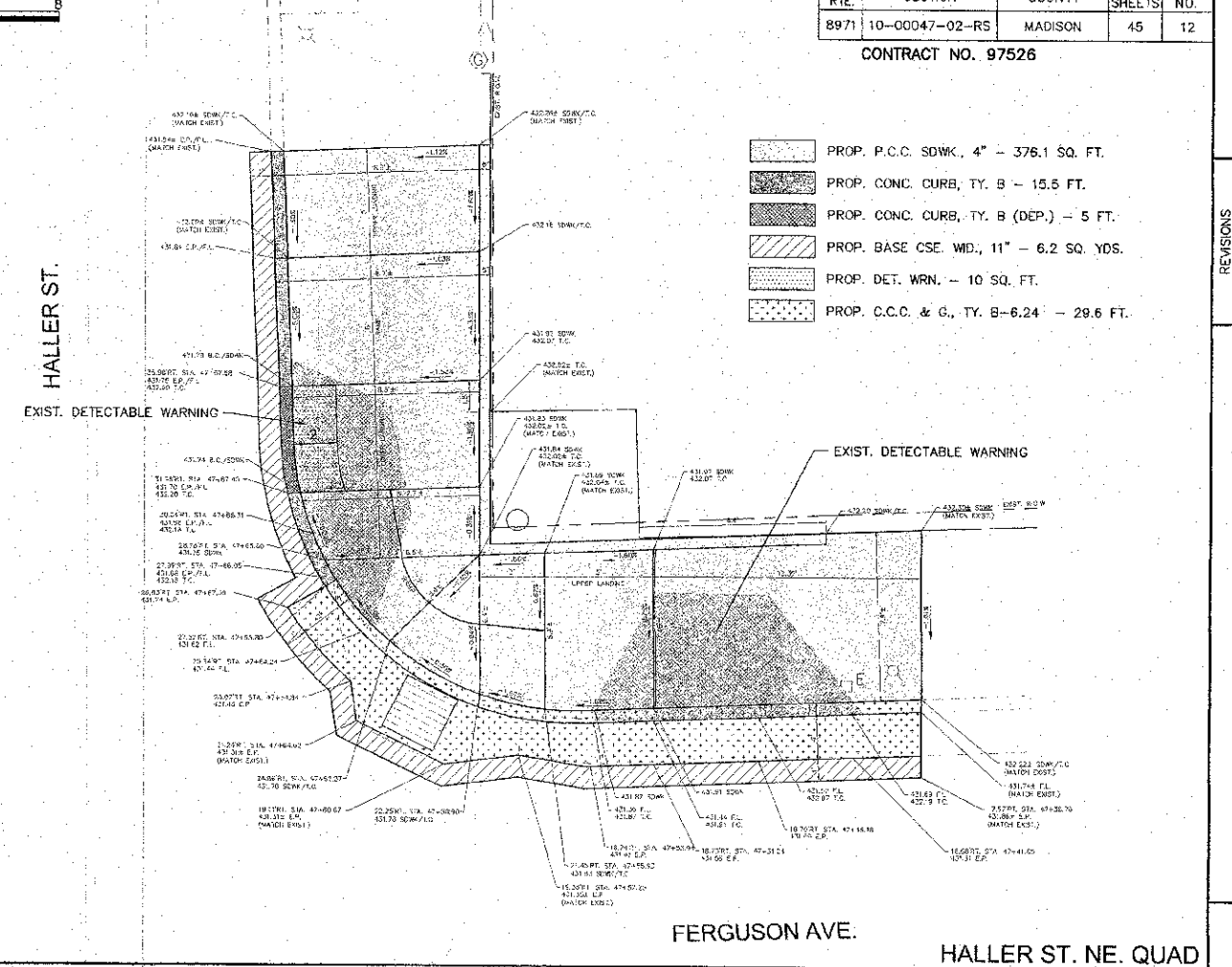
F.A.U. RTE.	SECTION	COUNTY	TOTAL SHEETS	SHEET NO.
8971	10-00047-02-RS	MADISON	45	12

CONTRACT NO. 97526

-
- PROP. P.C.C. SDWK., 4" - 361.7 SQ. FT.
-
- PROP. CONC. CURB, TY. B - 26.9 FT.
-
- PROP. CONC. CURB, TY. B (DEP.) - 5 FT.
-
- PROP. BASE CSE. WD., 11" - 5.3 SQ. YDS.
-
- PROP. DET. WRN. - 10 SQ. FT.
-
- PROP. C.C.C. & G., TY. B-6.24 - 13.4 FT.



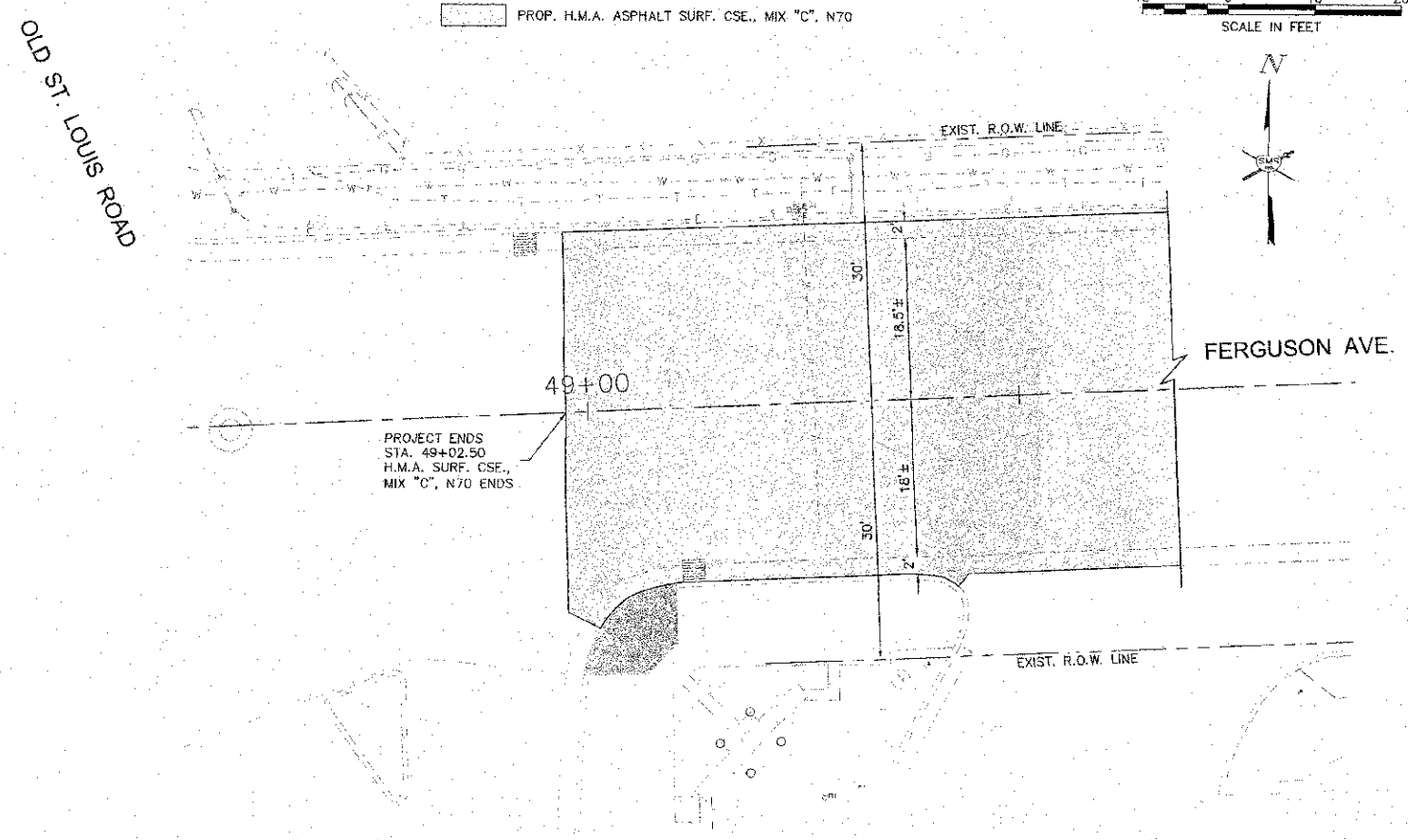
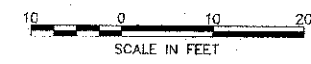
-
- PROP. P.C.C. SDWK., 4" - 376.1 SQ. FT.
-
- PROP. CONC. CURB, TY. B - 15.5 FT.
-
- PROP. CONC. CURB, TY. B (DEP.) - 5 FT.
-
- PROP. BASE CSE. WD., 11" - 6.2 SQ. YDS.
-
- PROP. DET. WRN. - 10 SQ. FT.
-
- PROP. C.C.C. & G., TY. B-6.24 - 29.6 FT.



HALLER ST. NW. QUAD

HALLER ST. NE. QUAD

-
- PROP. H.M.A. ASPHALT SURF. CSE., MIX "C", N70



REVISIONS

SMS ENGINEERS
Sheppard, Morgan & Schwaab, Inc.
 CONSULTING ENGINEERS AND LAND SURVEYORS
 215 Maple Street, P.O. Box 5, Alton, IL 62002, 618-462-0755, E-mail: sms@smsengineers.com
 30 Central Industrial Drive, Suite 3, Granite City, IL 62040, 618-837-6900, E-mail: ms@smsengineers.com
 DESIGN FIRM # 184-000982

CITY OF WOOD RIVER, ILLINOIS
 FERGUSON AVENUE RESURFACING
 SECTION 10-00047-02-RS
 PLAN

DWG. NO.	10-00047-02-RS
PLANNED BY	MS
PLAN	FERGUSON_HALLER.DWG
REF. BY	PC
JOB NO.	489044
DSN. BY	LDA
DWN. BY	CAD
CHK. BY	LDA
DATE	APRIL, 2013

SCALE: AS SHOWN
 SHEET 12 OF 45

S:\and\Projects\WOOD RIVER PS (489044)\FERGUSON_HALLER\PLAN_FERGUSON_HALLER.dwg, 4/12/2013 8:23:08 AM, jfman, 1:4