


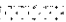
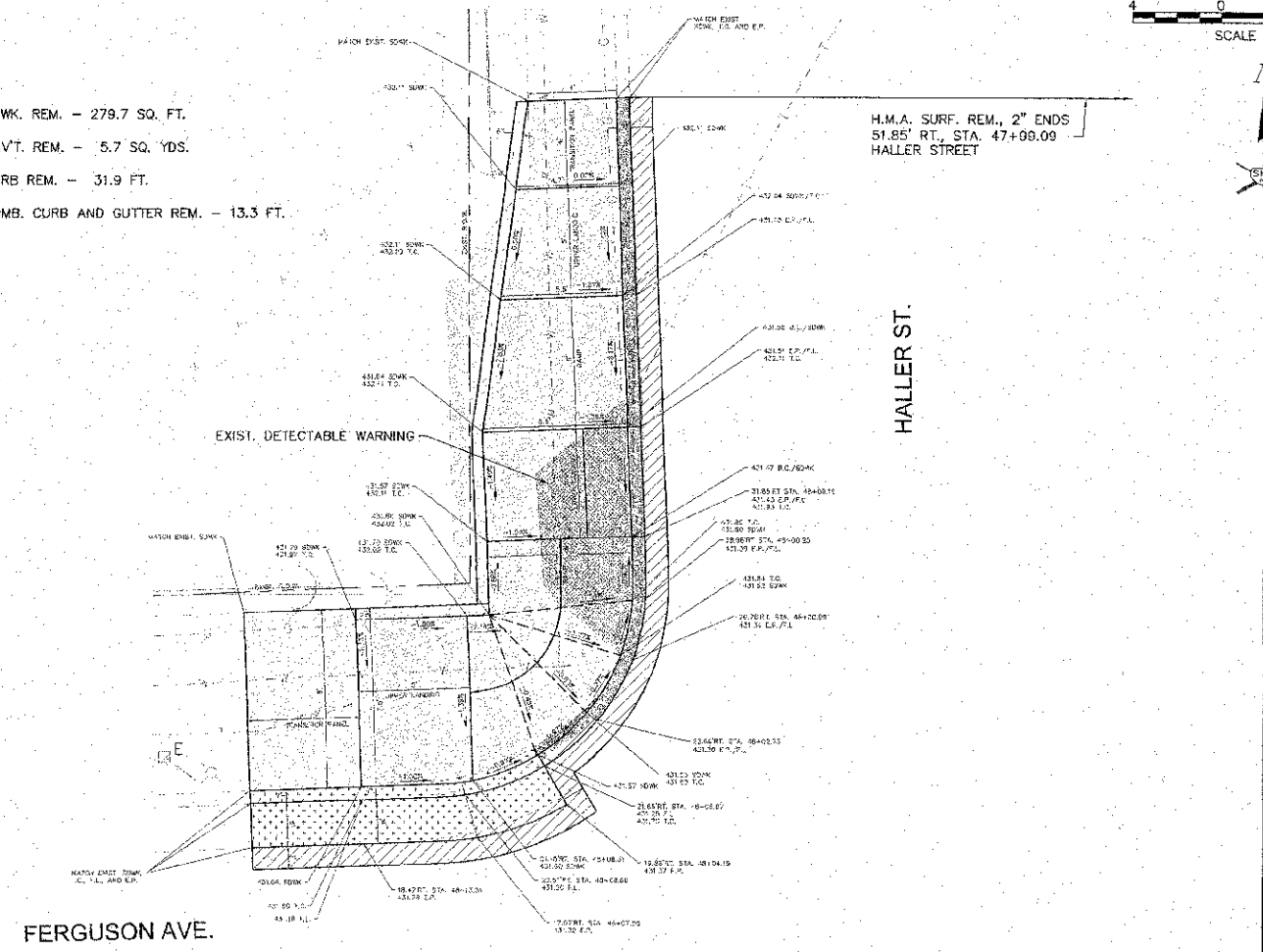





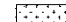
F.A.U. RTE.	SECTION	COUNTY	TOTAL SHEETS	SHEET NO.
B971	10-00047-02-RS	MADISON	45	18

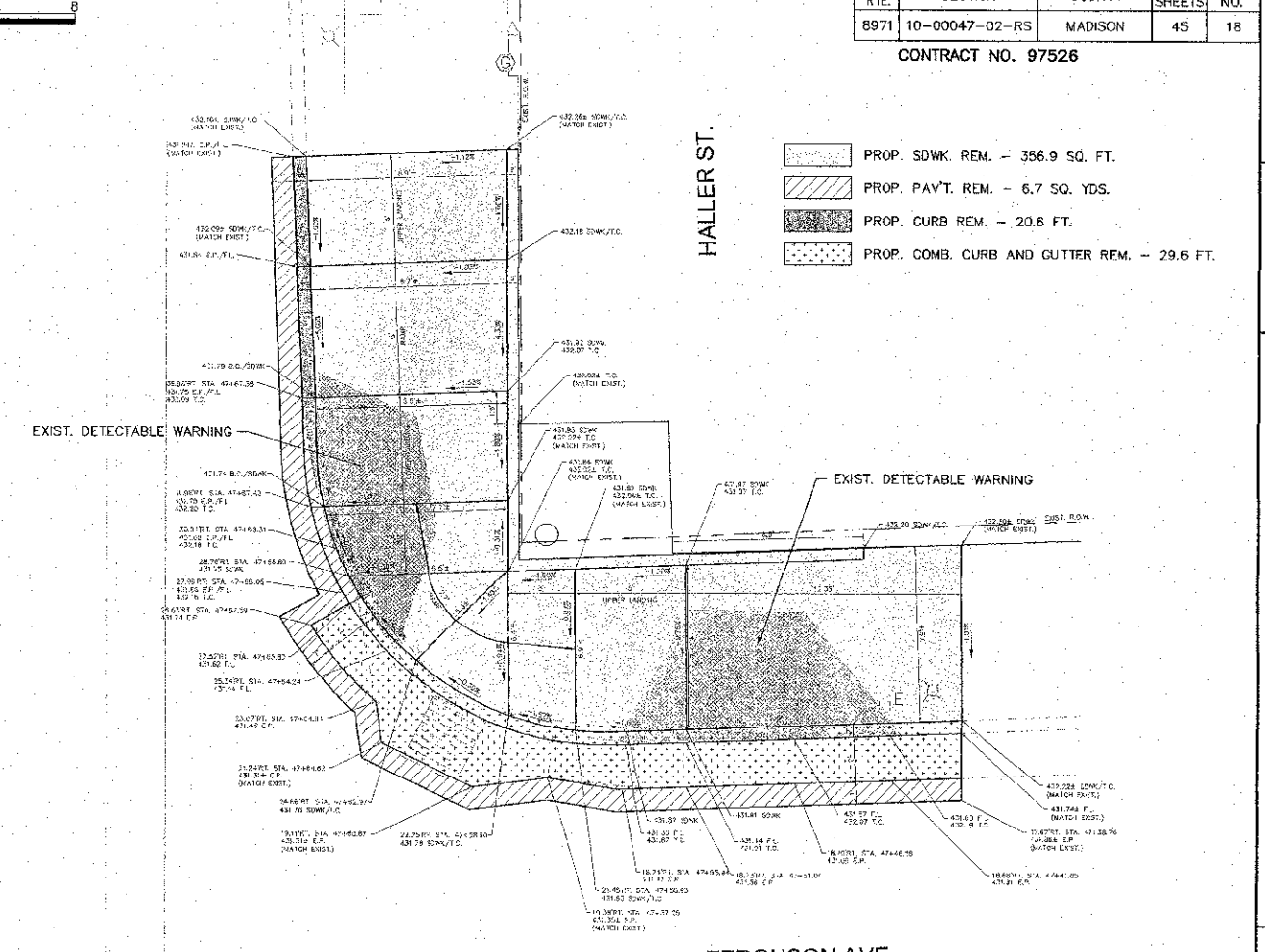
CONTRACT NO. 97526

-  PROP. SDWK. REM. - 279.7 SQ. FT.
-  PROP. PAVT. REM. - 5.7 SQ. YDS.
-  PROP. CURB REM. - 31.9 FT.
-  PROP. COMB. CURB AND GUTTER REM. - 13.3 FT.




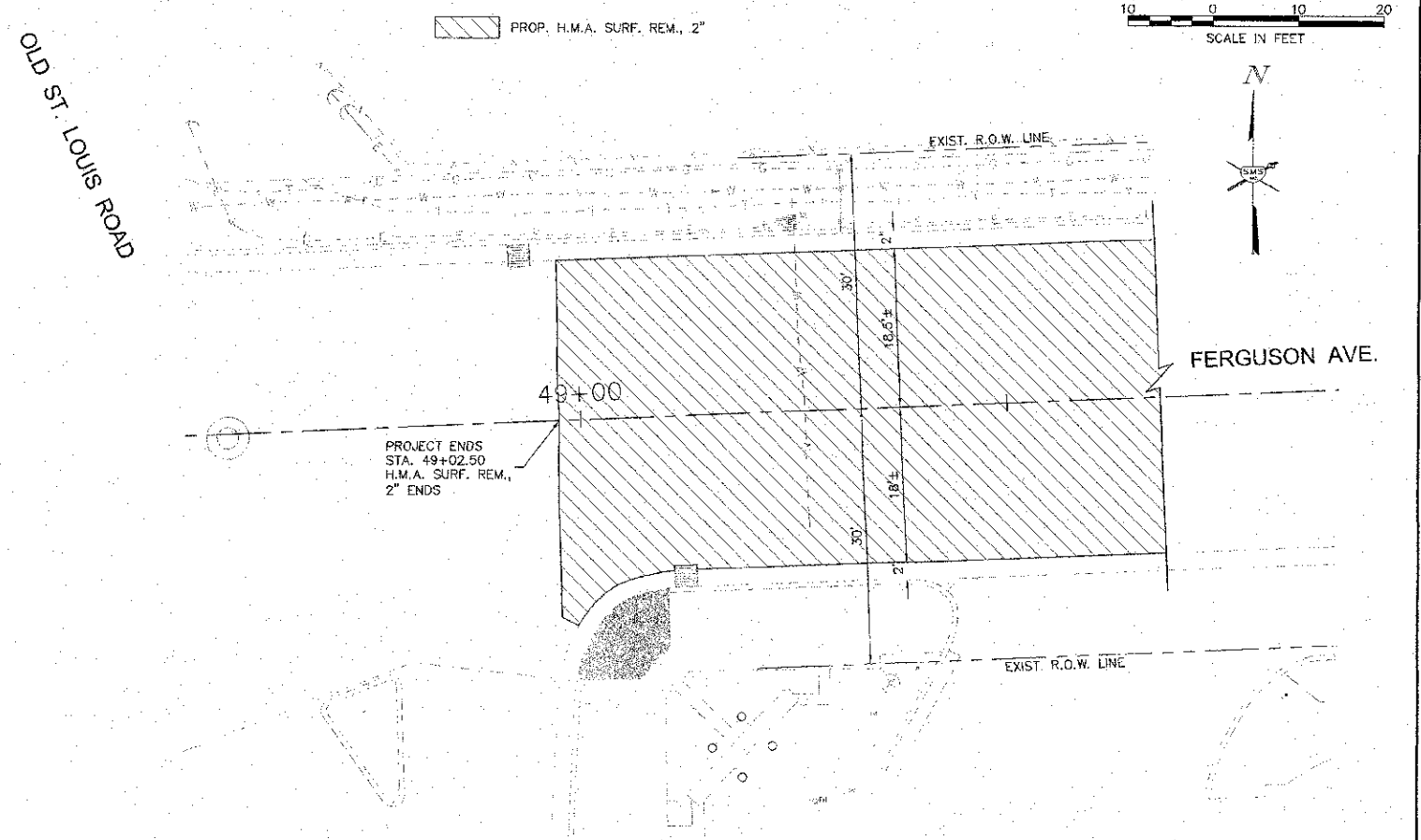
HALLER ST. NW. QUAD

-  PROP. SDWK. REM. - 386.9 SQ. FT.
-  PROP. PAVT. REM. - 6.7 SQ. YDS.
-  PROP. CURB REM. - 20.6 FT.
-  PROP. COMB. CURB AND GUTTER REM. - 29.6 FT.



HALLER ST. NE. QUAD

-  PROP. H.M.A. SURF. REM., 2"



FERGUSON AVE.

REVISIONS

**SMS ENGINEERS**  
**Sheppard, Morgan & Schwaab, Inc.**  
 CONSULTING ENGINEERS AND LAND SURVEYORS  
 215 Market Street, P.O. Box 12, Alton, IL 62002, 618-262-2075, E-mail: [smse@smsengineers.com](mailto:smse@smsengineers.com)  
 19 Central Industrial Drive, Suite 3, Sycamore, IL 60448, 618-277-4000, E-mail: [smse@smsengineers.com](mailto:smse@smsengineers.com)  
 DESIGN FIRM # 184-000992

CITY OF WOOD RIVER, ILLINOIS  
 FERGUSON AVENUE RESURFACING  
 SECTION 10-00047-02-RS  
 REMOVAL PLAN

DWG. NO.	10-00047-02-RS
PROJECT NO.	4880-44
DATE	APRIL 2013
SCALE	1" = 4'
SHEET	18 OF 45

S:\land Project\WOOD RIVER US (48804) FERGUSON - 2" H.M.A. SURF. REMOVAL FERGUSON\_HALLER.dwg, 4/15/2013 8:39:55 AM, J.men, 1:4