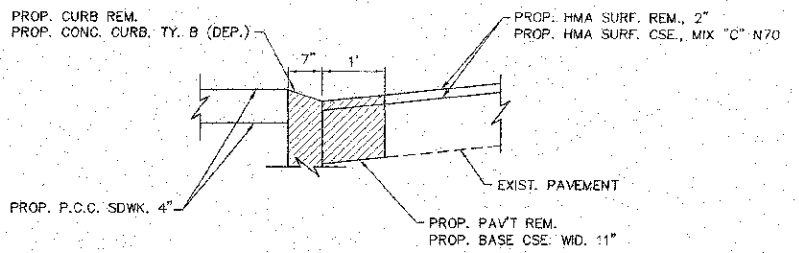
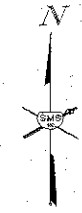
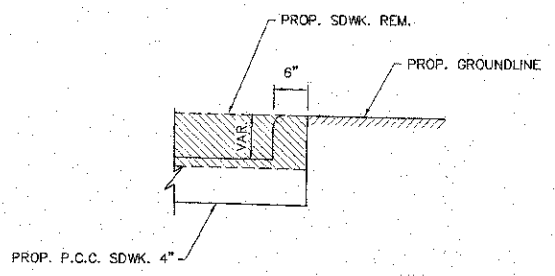


F.A.U. RTE.	SECTION	COUNTY	TOTAL SHEETS	SHEET NO.
8971	10-00047-02-RS	MADISON	45	29

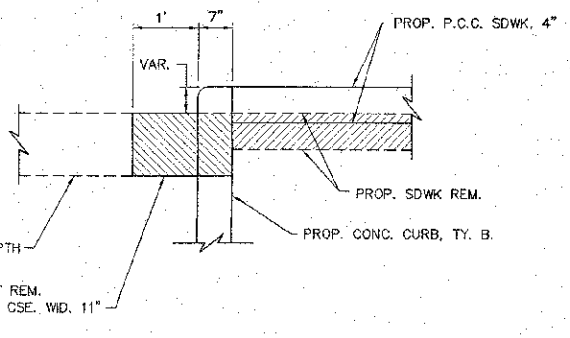
CONTRACT NO. 97526



SECTION A - A



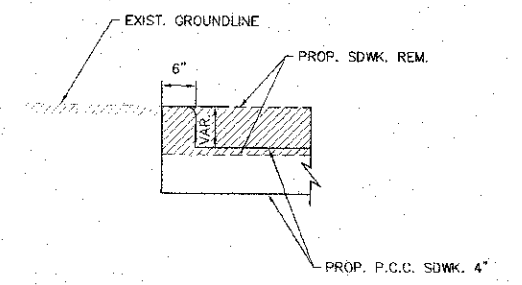
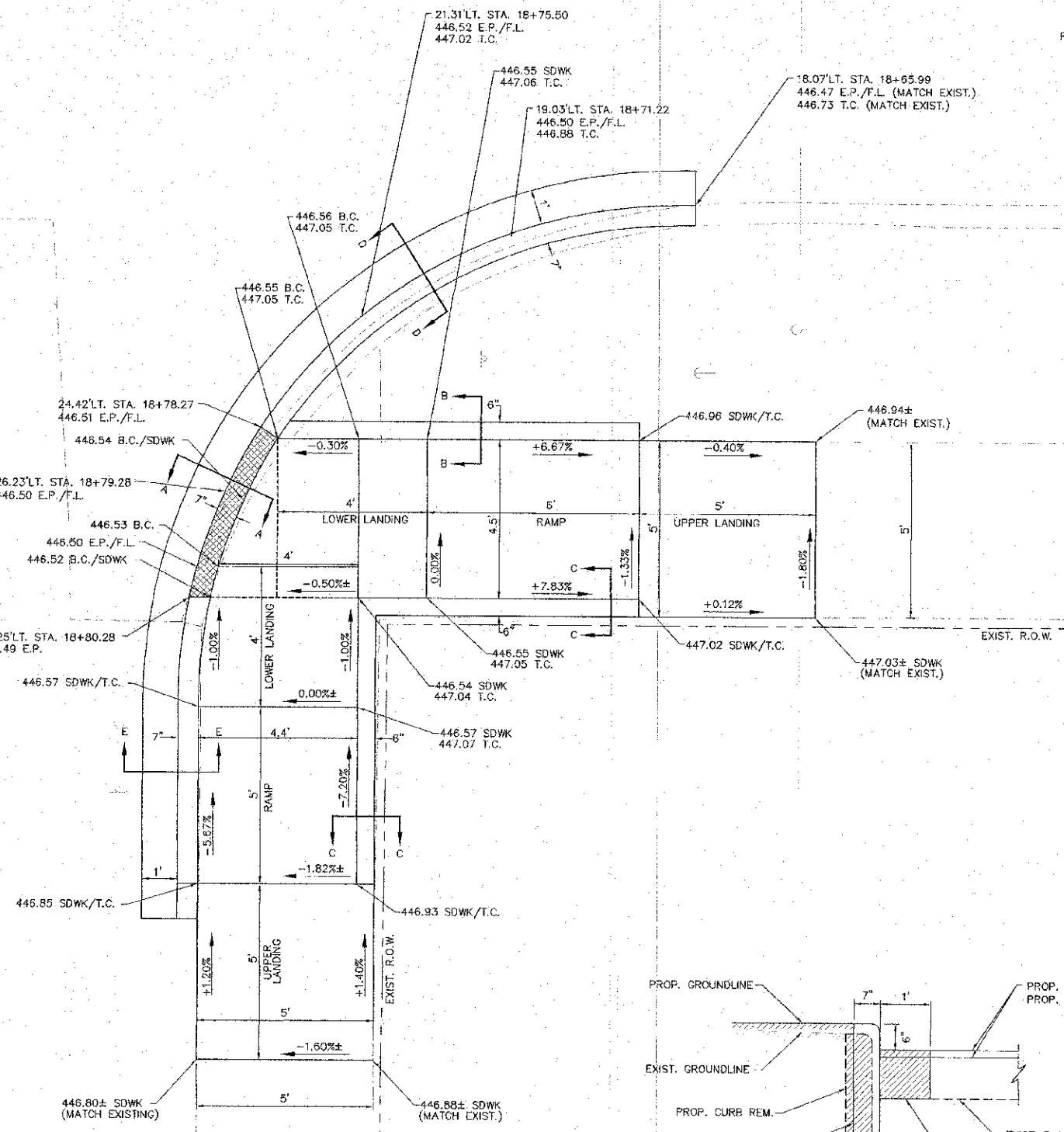
SECTION B - B



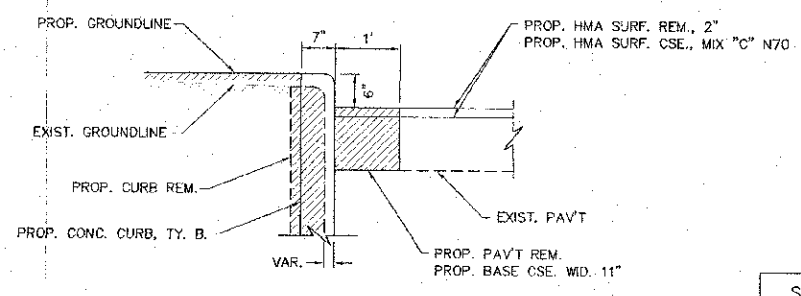
SECTION E - E

FERGUSON AVE.

4TH ST.



SECTION C - C



SECTION D - D

SEE PLAN SHEET FOR LOCATION OF DETECTABLE WARNING

4TH ST. SE. QUAD

REVISIONS

SMS ENGINEERS
Sheppard, Morgan & Schwaab, Inc.
 CONSULTING ENGINEERS AND LAND SURVEYORS
 215 Market Street, P.O. Box E, Alton, IL 62002, 6184323765, Email: ms@smsengineers.com
 30 Central Indiana Drive, Suite 3, Garrett City, IL 62849, 6188774700, Email: info@smsengineers.com
 DESIGN FIRM # 184-000992

CITY OF WOOD RIVER, ILLINOIS
 FERGUSON AVENUE RESURFACING
 SECTION 10-00047-02-RS
 INTERSECTION DETAILS

DWG. NO.	10-00047-02-RS
INT. DET. FERGUSON 4TH.DWG	
REF. BK.	PC
JOB NO.	488044
DSN. BY:	LDA
DWN. BY:	CAD
CHK. BY:	LDA
DATE:	APRIL, 2013
SCALE:	NOT TO SCALE
SHEET	29 OF 45