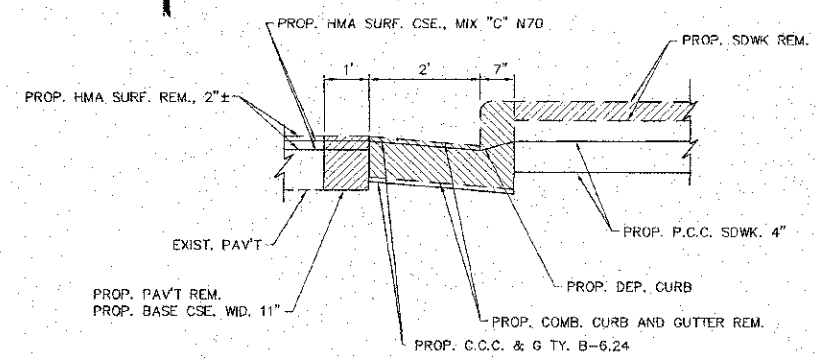
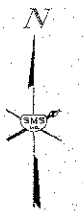
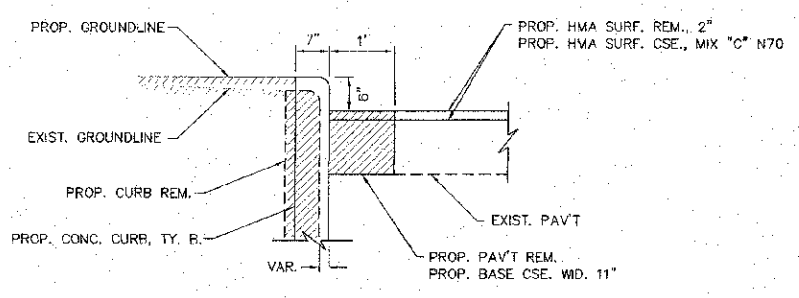


F.A.U. RTE.	SECTION	COUNTY	TOTAL SHEETS	SHEET NO.
B971	10-00047-02-RS	MADISON	45	32

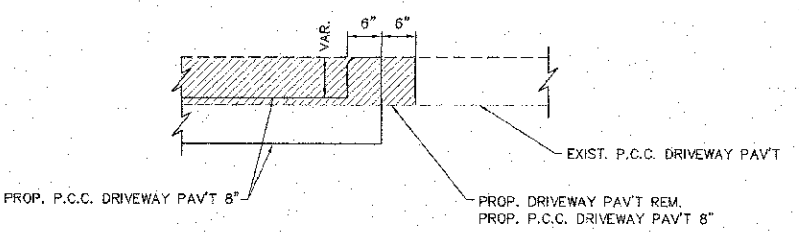
CONTRACT NO. 97526



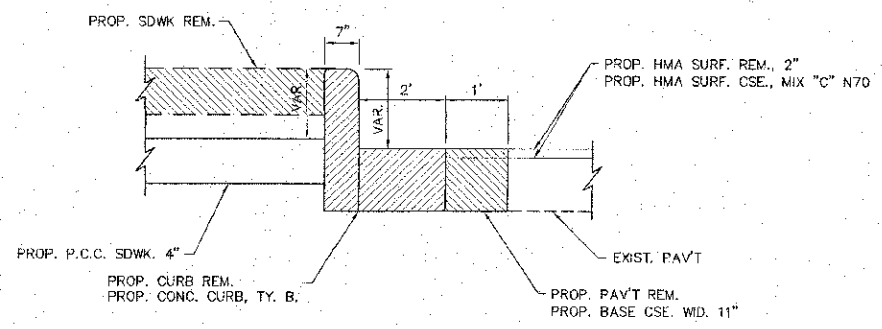
SECTION A - A



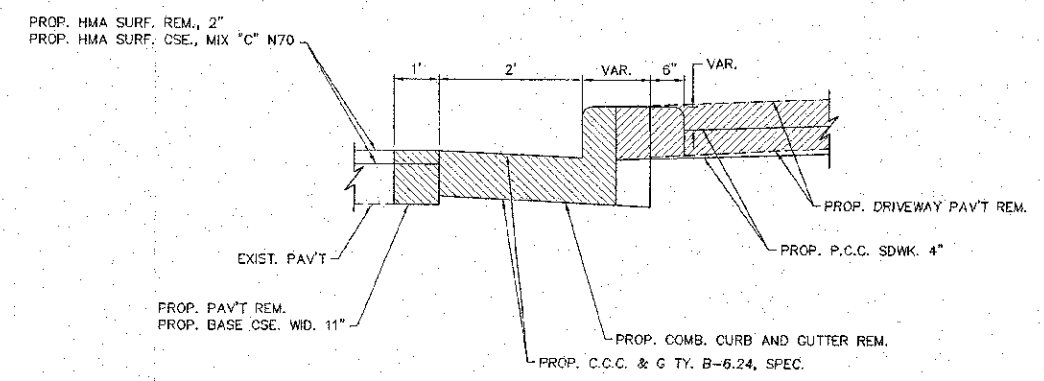
SECTION B - B



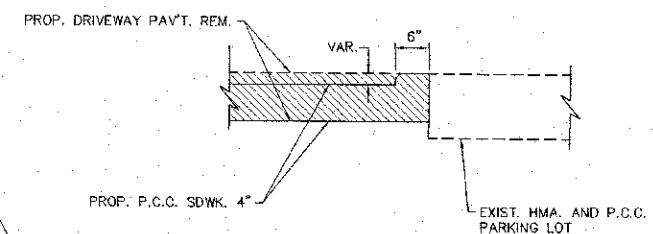
SECTION C - C



SECTION F - F



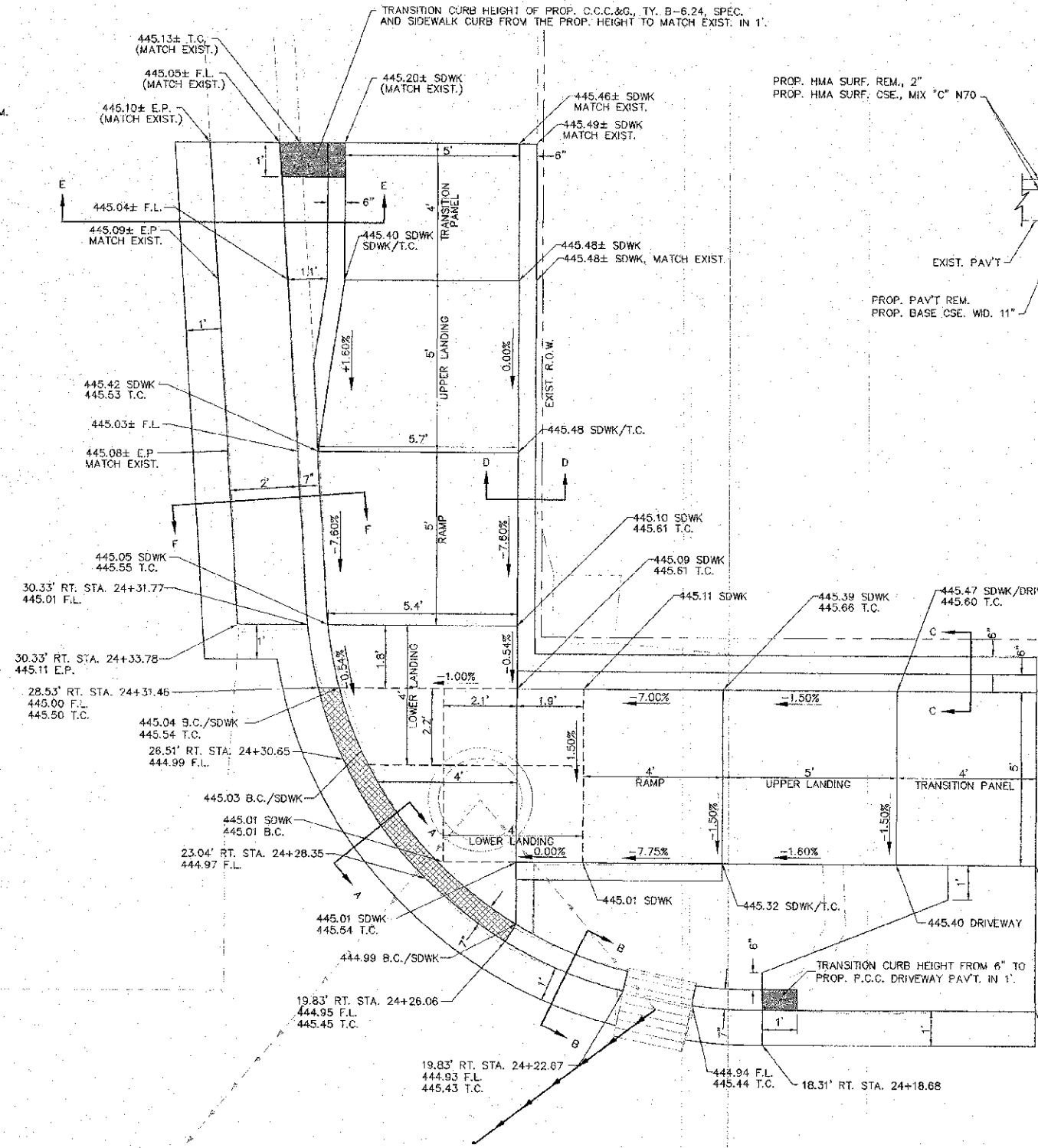
SECTION E - E



SECTION D - D

3RD ST.

FERGUSON AVE.



SEE PLAN SHEET FOR LOCATION OF DETECTABLE WARNING

3RD ST. NE. QUAD

REVISIONS

SMS Sheppard, Morgan & Schwaab, Inc.
 CONSULTING ENGINEERS AND LAND SURVEYORS
 219 Market Street, P.O. Box E, Alton, IL 62002 618-462-9755 Email: mail@smssurveyors.com
 16 Central Industrial Drive, Suite 1, Granite City, IL 62040 618-977-6700 Email: mail@smssurveyors.com
 DESIGN FIRM # 184-0000992

CITY OF WOOD RIVER, ILLINOIS
 FERGUSON AVENUE RESURFACING
 SECTION 10-00047-02-RS
 INTERSECTION DETAILS

DWG. NO. 10-00047-02-RS-32
 INTERSECTION DETAILS 3RD ST & FERGUSON AVE
 REF. BK. PC
 JOB NO. 488044
 DSN. BY: LDA
 DWN. BY: CAD
 CHK. BY: LDA
 DATE: APRIL, 2013
 SCALE: 1" = 2'
 SHEET 32 OF 45

S:\land Projects\WOOD RIVER PS (488044)\FERGUSON\HC RAMPS\dwg\INT DET FERGUSON_3RD.dwg, 4/15/2013 9:06:37 AM, jmanr, 32