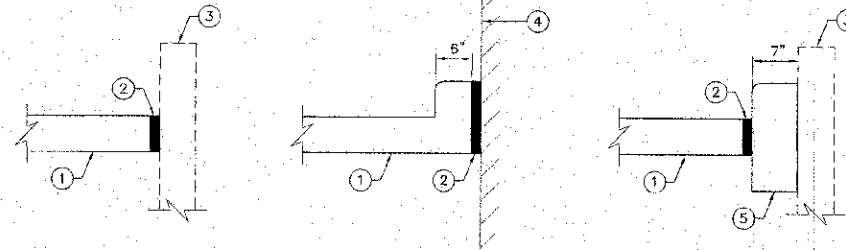
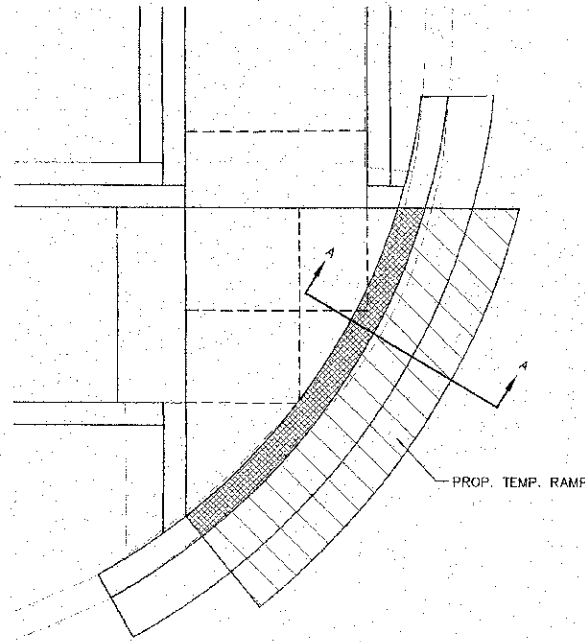


F.A.U. RTE.	SECTION	COUNTY	TOTAL SHEETS	SHEET NO.
8971	10-00047-02-RS	MADISON	45	45

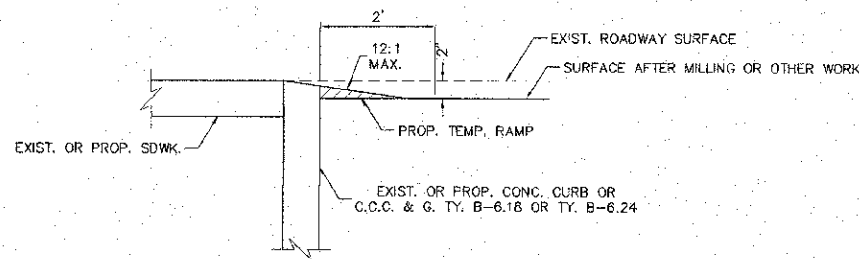
CONTRACT NO. 97526



- ① PROP. P.C.C. SIDEWALK 4"
- ② PROP. 1/2" EXPANSION JOINT MATERIAL
- ③ EXIST. RETAINING WALL
- ④ EXIST. BUILDING
- ⑤ PROP. CONC. CURB, TY. B

NOTE:
 1/2" EXPANSION JOINT MATERIAL SHALL BE REQUIRED WHEN THE ABOVE CONDITIONS ARE ENCOUNTERED. THE COST OF THE PROPOSED EXPANSION JOINT MATERIAL SHALL BE INCLUDED IN THE COST OF THE PROP. SIDEWALK.

DETAIL: EXPANSION JOINTS
 NOT TO SCALE



SECTION A-A
 NOT TO SCALE

NOTES:

1. WHEN THE SIDEWALK REMAINS OPEN TO PEDESTRIANS AND THE CONTRACTOR'S OPERATIONS CREATE A DROP OFF AT THE END OF AN EXIST. OR PROP. RAMP, THE CONTRACTOR SHALL CONSTRUCT A TEMPORARY RAMP AT THE END OF THE SIDEWALK RAMP.
2. MATERIAL USED FOR THE RAMP SHALL FORM A HARD AND EVEN SURFACE. AGGREGATE MATERIAL WILL NOT BE ALLOWED.
3. A QUANTITY HAS BEEN CALCULATED AND INCLUDED IN THE SUMMARY OF QUANTITIES FOR P.C.C. SIDEWALK OF SIZE SPECIFIED AT EACH PROPOSED RAMP, ASSUMING A HEIGHT DIFFERENCE OF 2".

DETAIL: TEMPORARY RAMPS FOR SIDEWALK RAMPS
 NOT TO SCALE

REVISIONS

SMS ENGINEERS
 Sheppard, Morgan & Schwaab, Inc.
 CONSULTING ENGINEERS AND LAND SURVEYORS
 215 Market Street, P.O. Box 5, Alton, IL 62002-0005 E-mail: sms@smssheppard.com
 10 Capital Islands, Suite 3, Granite City, IL 62040 618.677.4709 E-mail: mgs@smssheppard.com
 DESIGN FIRM # 184-000992

CITY OF WOOD RIVER, ILLINOIS
 FERGUSON AVENUE RESURFACING
 SECTION 10-00047-02-RS
 CONSTRUCTION DETAILS

DWG. NO.	LP\WOOD RIVER 488044\
DETAIL DWG	
REF. BK. PG.	
JOB NO.	488044
DSN. BY:	LDA
DWN. BY:	CAD
CHK. BY:	LDA
DATE:	APRIL, 2013
SCALE:	NOT TO SCALE
SHEET	45 OF 45