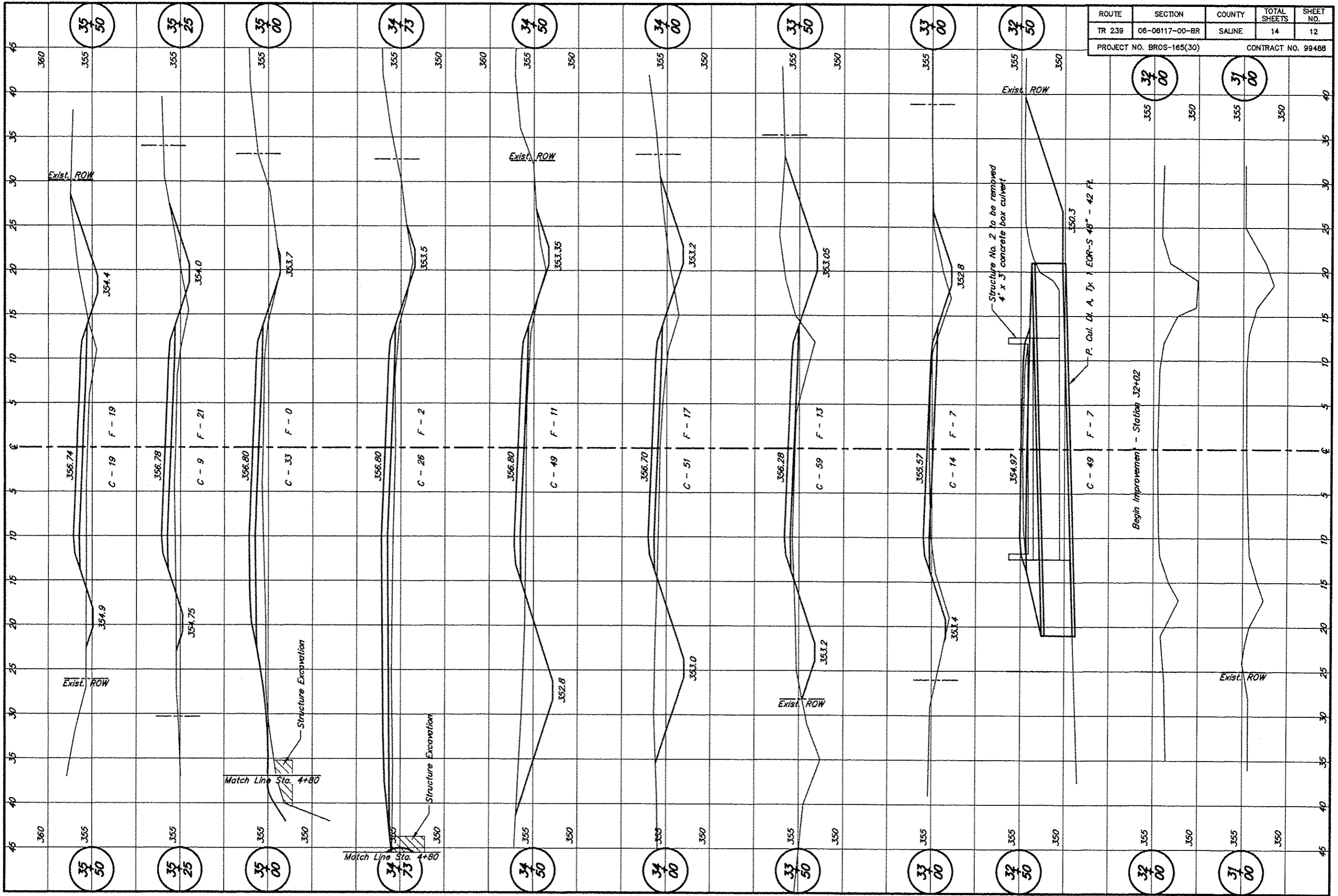


ROUTE	SECTION	COUNTY	TOTAL SHEETS	SHEET NO.
TR 239	06-08117-00-BR	SALINE	14	12
PROJECT NO. BROS-165(30)			CONTRACT NO. 99488	



35
50

35
25

35
00

34
75

34
50

34
00

33
50

33
00

32
50

32
00

31
00

35
50

35
25

35
00

34
75

34
50

34
00

33
50

33
00

32
50

32
00

31
00

360

355

355

355

360

360

360

365

360

365

360

355

360

355

355

360

355

350

355

350

360

355

355

355

360

360

360

365

360

360

360

355

360

355

355

360

355

360

355

360

Exist. ROW

356.74

C - 19

354.4

356.78

C - 9

354.0

356.80

C - 33

353.7

Match Line Sta. 4+80

Structure Excavation

356.80

C - 26

353.5

Match Line Sta. 4+80

Structure Excavation

356.80

C - 49

353.35

Exist. ROW

356.70

C - 51

353.2

Exist. ROW

356.28

C - 59

353.05

355.57

C - 14

352.8

Structure No. 2 to be removed
4' x 3' concrete box culvert

354.97

C - 49

350.3

P. Cul. Di. A. Ty 1 EOR-S 48" - 42 Ft.

Begin Improvement - Station 32+02

Exist. ROW