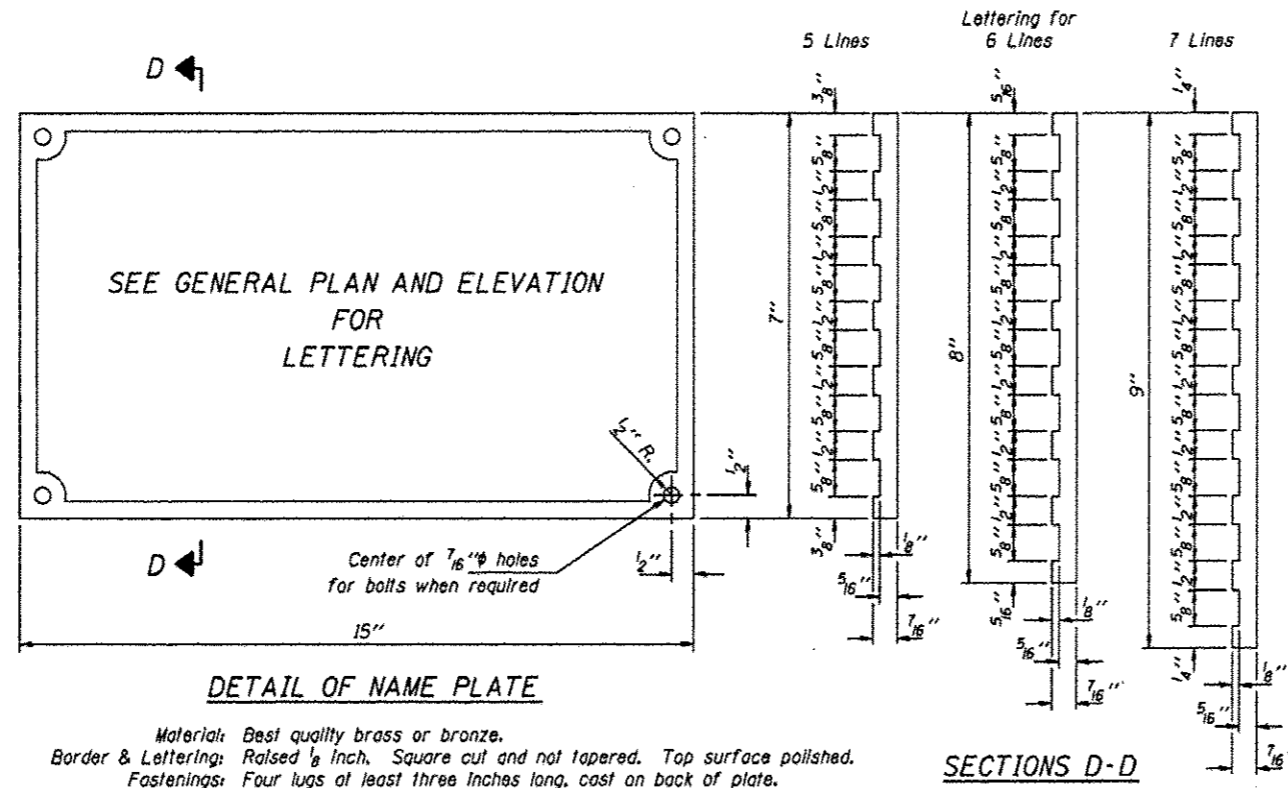
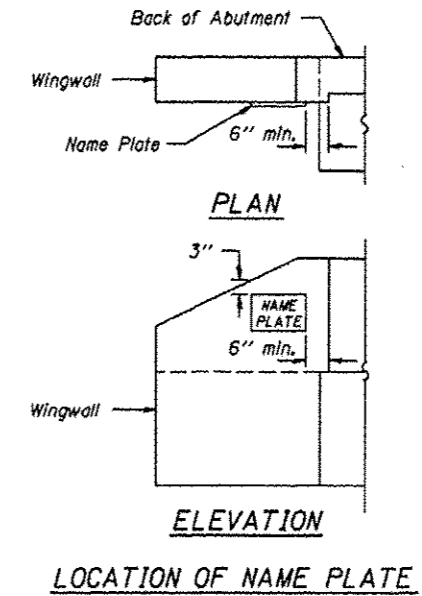


ROUTE	SECTION	COUNTY	TOTAL SHEETS	SHEET NO.
TR 164	10-06119-00-BR	SALINE	13	10
PROJECT NO. BROS-165(36)			CONTRACT NO. 99489	



Material: Best quality brass or bronze.  
 Border & Lettering: Raised  $\frac{1}{8}$  inch. Square cut and not tapered. Top surface polished.  
 Fastenings: Four lugs at least three inches long, cast on back of plate.



NAME PLATES  
 TOWNSHIP ROUTE 164 (BUTLER ROAD)  
 BRIER CREEK  
 SECTION 10-06119-00-BR  
 SALINE COUNTY  
 STRUCTURE NO. 083-3241