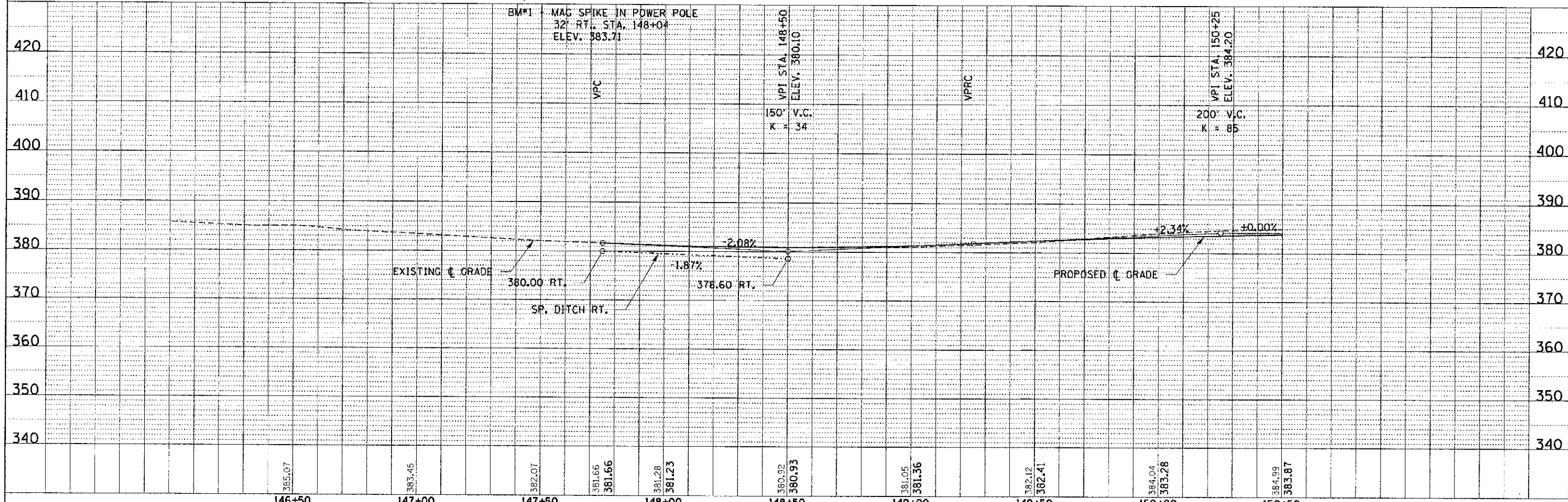
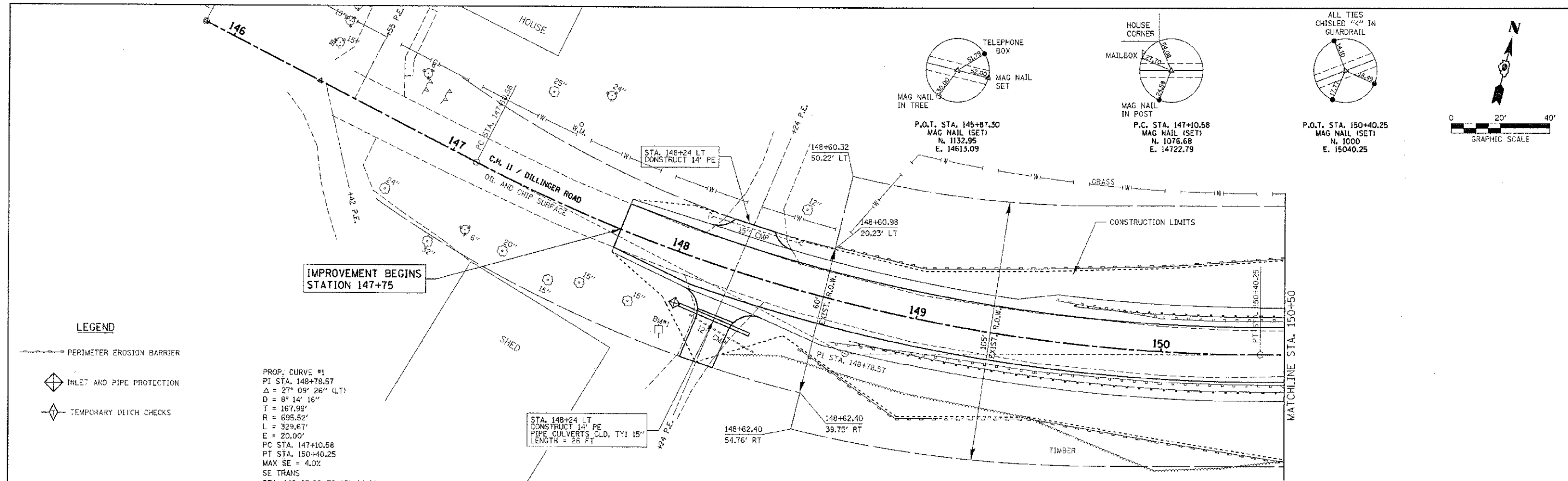


PLAN	DATE
BY	
CHECKED	
DATE	
NO. OF WAY CHECKED	
NO. OF TIES CHECKED	
NO. OF MAG NAILS CHECKED	
NO. OF DITCH CHECKS CHECKED	
NO. OF PERIMETER EROSION BARRIERS CHECKED	
NO. OF INLET AND PIPE PROTECTION CHECKED	
NO. OF TEMPORARY DITCH CHECKS CHECKED	

PROFILE	DATE
BY	
CHECKED	
DATE	
NO. OF WAY CHECKED	
NO. OF TIES CHECKED	
NO. OF MAG NAILS CHECKED	
NO. OF DITCH CHECKS CHECKED	
NO. OF PERIMETER EROSION BARRIERS CHECKED	
NO. OF INLET AND PIPE PROTECTION CHECKED	
NO. OF TEMPORARY DITCH CHECKS CHECKED	



FILE NAME = 120127-ext-01.dgn	USER NAME =	DESIGNED - J.W.F.	REVISED -	STATE OF ILLINOIS JACKSON COUNTY HIGHWAY DEPARTMENT	PLAN & PROFILE DILLINGER ROAD	C.H.	SECTION	COUNTY	TOTAL SHEETS	SHEET NO.	
HAMPTON, LENZINI AND RENWICK, INC. 380 STEVENSON DRIVE, SUITE 200 SPRINGFIELD, ILLINOIS 62767	PLOT SCALE =	DRAWN - L.G.C.	REVISED -			11	06-00145-00-BR	JACKSON	54	5	
CONTRACT NO. 99509	PLOT DATE = 4/9/2013	CHECKED - S.W.M.	REVISED -			ILLINOIS FED. AID PROJECT					
		DATE - 03/12/13	REVISED -			SCALE: H20xV10 SHEET NO. 1 OF 3 SHEETS STA. 145+87.30 TO STA. 150+50.00					